

140,000 POPULATION — THE FIRST ROUND!

Mammoth inquiry already behind two-weeks schedule

BASILDON ALREADY a social success; the need for more offices in the town; the bid to make Basildon a regional centre and a plan to provide recreational facilities "from the cradle to the grave." These were some of the points to emerge from the first day of Basildon's Master Plan inquiry on Tuesday, writes PETER LUCAS.

The whole day was taken up by the Development Corporation's case for the plan, presented by their General Manager Mr. R. C. C. Boniface.

He rose to start his opening speech before Ministry of Housing Inspector Mr. T. F. Thomson at 11 a.m. and apart from a break for lunch went on unimpeded until 5.2 p.m.

There was no further time for the planned representations from Thurrock Council and so the inquiry fell behind its two weeks' schedule on the very first day.

Mr. Boniface opened his case by stating that on the closing date in October 74 objections to the plan had been received. Since then the number had risen to 87.

It had been the Corporation's policy, he said, to try and remove as many objections as possible prior to the inquiry and the various representations by his staff had resulted in 31 objections being withdrawn.

They had found that many people had read too much into the plan or were suffering from misapprehensions about it.

NEW TOWN HISTORY

Mr. Boniface then traced back a history of the New Town speaking of the Corporation's task in superimposing the town on a rural slum with its 5,000 sub-standard dwellings, 78 miles of mud roads and poor standard shops.

The first Master Plan he recalled catered for a population up to 80,000.

Later the figure went up to 97,600 before the Minister officially recognised a 106,000 population target in 1960.

The second Master Plan was then prepared and approved by the Minister in October 1963.

"Hardly was the ink dry on that," said Mr. Boniface, "when the South-East Study was published. This stated there was scope for further expansion in Basildon."

"We were then told to see how far Basildon could take an increase in population and to prepare a technical study on where it could be accommodated."

"Our instructions were wide at that time. We were told by the Minister we need not stay in the present designated area and could move as far afield as we liked."

"At the time it seemed possible we might accommodate a 200,000 ultimate population."

Mr. Boniface said the

Corporation employed consultants to continue the study work already started and they recommended a population of 155,000 and an extension of the designated area from 7,818 acres to 11,430 acres.

The Corporation studied the report and decided unanimously not to recommend it to the Minister because it took land for the town unnecessarily.

It was also too expensive and it interfered with the development already carried out or planned by the Corporation and the Urban Council.

After taking this step the Corporation told the Minister they could prepare a plan for 140,000 people without extending the present designated area.

PROGRESS

Mr. Boniface then turned to Basildon's progress since it was first designated in 1949 and said the Corporation were proud of their record.

"We hear a great deal of criticism of New Towns," he said, "that they are social deserts and places where people go to get a house and job and want to leave as soon as possible. This is not so in Basildon, where we are housing and finding jobs for three generations."

"No New Town can be a social success until the people

who live in it participate in its civic and social life. "There is always a danger in the early years that with everything handed to people on the welfare state plate, that they won't put anything back into the town."

SOCIAL SUCCESS

"When the first signs show that people are putting something back into the town; expanding their pattern of life in which personal participation plays a part, then you know that town must succeed."

"Basildon had only reached the half-way stage, but it is already a social success," submitted Mr. Boniface.

He added, "Of course, it is not like an old town, but one questions whether that is desirable after all."

Coming to the new Master Plan, Mr. Boniface said the Corporation were not proposing to extend the designated area for several reasons.

Firstly, they were complying with the Minister's instructions to prepare a scheme using the present area boundaries, and, secondly, they thought it necessary to avoid coalescence with other nearby towns including Brentwood and Corringham.

Under the present proposals the gap at the western end of the "sausage-shaped" area was 2 miles. The gap to the south towards Corringham was not as large, but it was equally effective.

Mr. Boniface said the shape of the designated area was a limiting factor. The town would lose its effectiveness as a unit if it expanded too far east or west.

NOT GREEN BELT

"Later in the inquiry it will be suggested that the Corporation are destroying open land, this is not so," he said. "This is not Green Belt land as it is within our designated area."

The land are are planning to build on has already been built upon. The hospital is going there and so also is the College of Further Education.

He's in charge



THE MINISTRY OF HOUSING INSPECTOR IN CHARGE OF THE INQUIRY — AND THE PROCEEDINGS ARE LIKELY TO LAST MORE THAN A FORTNIGHT — IS MR. T. F. THOMSON. HE IS SEEN ABOVE LISTENING TO MR. BONIFACE'S SPEECH.

"But the County Council did not object to these proposals," he said.

Objections to the plan about the unsuitability of roads could also be ruled out. Mr. Boniface, who said the Corporation planned to Buchananise their roads to year 2001 standards.

He also thought the objection on the grounds of shortage of water held little weight. They will be frehold sites where they can build their new homes."

Answering criticism that the new plan took land due to be returned to agriculture for housing and other development, Mr. Boniface said the return to agriculture decision was taken in 1951 at a time when rationing still existed.

a freehold for a freehold. something which was not possible a few years ago.

GOOD NEWS?

"I'm sure this will be good news to Landlord Residents' Protection Association who have campaigned on this point for a long time," continued Mr. Boniface.

"These people we are dispossessing will be offered other sites in the same part of the town where they have their roots. They will be frehold sites where they can build their new homes."

On housing densities, Mr. Boniface said that under the average density was 4 persons to the acre. Under the new proposals this had been increased to 45 persons to the acre.

He pointed out the difficulties in planning high density housing with garages and car spaces and said there was a point beyond which the plan here could not go consistent with good planning.

The Corporation had reached a point of no return and were making a stand on this, he assured his audience.

11,000 MORE HOUSES

Mr. Boniface said that some time before 1970 immigration into Basildon would exceed that before then the Corporation proposed to build 11,000 more houses, which, allowing for reaccommodation, would provide homes for 6,500 more London families.

"Can anyone doubt that this will to the problem of London?" he asked.

Regarding industry, the Master Plan would introduce a fourth industrial area at the Dunion end to come into

(Continued from Page 6)

THE COUNTY Council witnesses agreed on Wednesday that the Corporation were not planning to touch the beauty spot of One Tree Hill. "As far as I can say this has never been your intention," said the Assistant Planning Adviser to the County Council, Mr. T. A. Henderson.

BETWEEN FOUR and five per cent (4,000 people) moved out of Basildon Urban District in the year 1960-61. In the same year 8,000 people moved in. This was stated by the Assistant County Planning Adviser at this week's inquiry.

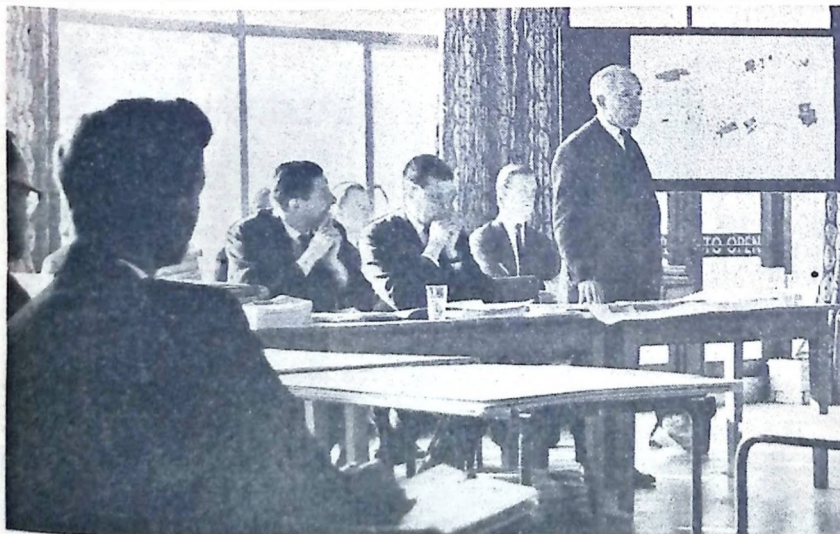
"At that time it was a case of encouraging agriculture in an area, and the Corporation were faithful to that Government policy."

"But at the previous Master Plan Inquiry," he added, "both the Corporation and the County Council were doubtful as to whether the 2,600 acres could ever be returned to agriculture. The only way it could be done would be to buy up all the properties on the land in piecemeal fashion."

The Corporation have been doing this for 18 years out of the 600 to acquire in these farm areas."

Under the present plan the Corporation planned, "in simple terms," to take over 640 acres of this land for housing at an average density of 50 people to the acre.

It was inevitable that some people would lose their homes under the plan, but he gave an assurance that the Corporation would treat each case with the greatest sympathy and consideration. They were prepared to give



THE SCENE ON THE FIRST DAY OF THE REVISED MASTER PLAN INQUIRY, WITH THE GENERAL MANAGER (MR. R. C. C. BONIFACE) PUTTING THE CASE FOR THE BASILDON DEVELOPMENT CORPORATION.

Only a
mother cares
as much as
Clarks



about
growing
feet

But a mother doesn't have the shoe know-how the Clarks experts have. We are a Clarks Specialist. We'll find the right shoes for your child's feet to allow for normal, healthy growth. From Clarks four width fittings.

Clarks

from

CHARSLEYS

YOUR SPECIALIST FOOTFITTERS

57/59 MARKET SQUARE, BASILDON

1967

GODFREY
PHOTOGRAPHICS

PHOTOGRAPHIC SALE

	LIST PRICE	SALE PRICE
KALIMAR PM40 SUPER ELECTRONIC FLASH	£12.15.3	£8.19.6
UNOTRONIC ELECTRONIC FLASH, rechargeable	£15.15.0	£12.15.0
KODAK M2 SUPER 8 CAMERA	£22.5.0	£19.0.0
KODAK M4 SUPER 8 CAMERA	£32.8.4	£29.0.0
GREENKAT 7 x 50 Z.C.F. BINOCULARS	£14.5.0	£12.17.6
GREENKAT 8 x 30 Z.C.F. BINOCULARS	£11.5.0	£9.19.6
BIORA CINERET TRIPOD with pan and tilt and centre column	£10.17.4	£8.5.0
SILMA TELEOMATIC SUPER 8 PROJECTOR	£59.19.6	£49.19.6
EUMIG MK. M SUPER 8	£40.15.0	£42.0.0
ALDIS SLIDE PROJECTOR, SN12	£21.0.0	£18.0.0
GNOME CLASSIC, I.Q.	£23.0.0	£20.0.0
CANON QL25, 35mm.	£43.10.0	£33.0.0
HANIMAX AUTO EE	£32.7.6	£22.10.0
FED 4L	£29.19.6	£26.19.6
YASHICA REFLEX 35	£59.18.0	£49.18.6

PLUS OTHER NEW OR SHOPSOLD FULLY GUARANTEED CAMERAS AND EQUIPMENT

GODFREY—THE CHEMIST

FIRST FLOOR PHOTOGRAPHIC STORE

35 East Walk, Town Centre, Basildon

Telephone: BASILDON 20650

ALSO AT

24 Grover Walk, Corringham (New) Town Centre

TELEPHONE: STANFORD-LE-HOPE 4439

THIS IS OUR OPINION ANOTHER EFFORT TO SOLVE SHOP HOURS PROBLEM

BASILDON'S SHOP HOURS' system—if that is the right word for it—has long been the cause of discontent. Shops open haphazardly and experiment with various trading patterns when it occurs to them, seldom with any serious attempt to consult their neighbours.

Basildon Chamber of Trade, having failed on several occasions to put their own house in order or even to settle on any overall policy, sat back and shot down in flames the next attempt to make sense of the situation.

This was the Basildon Consumer Group scheme to reorganise shop hours in a way they felt would suit modern living. The result of their efforts? Nil, apart from some objections from shopworkers and some scorn from the Chamber.

After a lull of almost a year shop hours are back in the news. The Union of Shopworkers, Distributive and Allied Trades are the latest body to venture into the chaos.

The programme they embarked on at an open meeting on Wednesday has a lot of commonsense to commend it. Before formulating their own policy they will quiz all local shopworkers. Then, hopes their organiser, they will meet consumers and traders to thrash out the whole affair.

We wish them luck. They will need it!

End Council apathy demands Sunnymede

STILL WAITING for a reply to a letter written to Basildon Council four months ago asking for a children's recreation ground in their area are Sunnymede Committee of Billericay Residents' Association.

They should not rest until they got one and the Council should recognise the justice of their request and act upon it as soon as they can.

In no time at all Sunnymede has developed almost out of recognition. Houses have appeared practically overnight and there is no sign of this rapid development abating.

The Council should need no reminding that the occupants of these houses are, in the main, young people with expanding families and that they do not want the streets to be the playgrounds for their offspring.

The Council should also cast their minds back a couple of years to a similar request from Outwood Common Sports Club and their parent body, Outwood Common Residents' and Community Association.

And, having done that, they should look into the future, too, and realise from past experience that the areas of land of "no notation" on the east of Billericay are far from secure from the encroachments of developers.

This is one request they should meet with action—now.

GOOD NEWS FOR OVER A THOUSAND CORPORATION HOUSE TENANTS

JUST OVER 1,000 tenants of the newer Basildon Development Corporation houses could benefit under the Corporation's new temporary rent rebate scheme which comes into operation on March 6th.

Aim of the scheme is to give relief to tenants of new and recently built high rent dwellings in Basildon who cannot afford to pay the full rents of the dwellings they occupy.

The scheme—the first of its kind to be introduced by the Corporation—applies to net rent only. Rates and water are payable in addition.

All tenants eligible for consideration under the scheme will shortly receive a leaflet on the subject from the Corporation.

The houses involved are: Laindon Siporex, 600 houses; Vange 5 (Byfleet area), 74; Vange 1/3C, 50; Lesser Homes (Barstable and Fryerns), 233; Stagden Cross, Barstable, 50; Cosmos (Barstable), 7. Total, 1,014.

A statement issued by the Corporation on Wednesday said the scheme will be reviewed by the Corporation after it has been in operation for six months.

A decision will then be taken as to whether it will continue in its original form or whether it should be modified or extended.

The Corporation also stated they were also prepared to give special consideration to individual cases of hardship which do not fit within the provisions of the scheme.

SCHEME DETAILS
The amount of net rent payable by an applicant for a rebate will be calculated in the following manner:

(1) Take the average gross weekly income of the tenant and his wife for the previous 13 weeks. This is the income from all sources, including overtime, bonus, pensions and other regular payments under the National Insurance Scheme (excluding family allowances, maternity grants and benevolent grants).

(2) Deduct the net rent payable by the tenant and his wife for the previous 13 weeks. The balance of the remaining amount by five.

(3) Divide the first £2 of the balance by seven and the amount stated below for each and every other person residing in the dwelling who is:

(a) employed or in receipt of an income, 18-20 years of age—2s. a week; 21 years or over—1s. a week; retired person—3s. 6d. a week; adult lodgers—15s. a week.

(b) Deduct from the figure obtained, 2s. 6d. in respect of the first dependent child.

(c) If the sum arrived at is less than the net rent of the dwelling, the difference will be the amount of the rebate subject to a maximum of one third of the net rent of the dwelling. For example, if the net rent of the dwelling is £3 15s., the maximum allowable rebate will be 25s.

(d) A husband earning £13 10s. with a wife earning £5, who have a son in school, an old age pensioner parent, and a dependent first child, the rebate net rent will be 9s. 6d. on a net rent of £1 15s. 6d.

A man and wife with gross earnings of £19, and who have three dependent children, will be entitled to 11s. 6d. on a net rent of £3 12s. 10d. a week.

Pop—and out goes the light!

EASTERN Electricity are to check for possible "sudden surges" in power in Ramsden Bellhouse following suggestions that voltage fluctuations could be dramatically shortening the life of light bulbs.

Mr. K. Quincey, the Board's Secretary and District Assistant Engineer, told the "Standard" on Thursday: "Sudden surges are unlikely, but they are technically possible if a fault is developing."

The continuous death of bulbs was discussed by Ramsden Bellhouse Community Centre's Management Committee at their meeting, when members were faced with a mounting bill for replacements.

Chairman Mr. Bob Catchpole said bulbs were popping two or three times a week. Nearby homes were also said to be affected.

Mr. Quincey commented: "We have not had a flood of complaints, but we will certainly check it out. I will see if we can install a recording volt meter in a house near the Community Centre for two or three days."

He added that variations in voltage were usually gradual and would not normally affect the life of bulbs, which were manufactured to withstand them.

He would point out that towards the end of winter, he would have about 900,000 bulbs do often expire together.

"They only have a few hours and people tend to buy them in batches."

HOUSE FOR HOSTEL?
Conditional planning permission has been given by Basildon Council Planning Committee Chairman to Laindon Frith, Billericay, being used as a hostel for maladjusted and deprived children.

CORPS TRIBUTE
Wickford Salvation Army Corps paid tribute to General Albert Osborn at their service on Sunday morning.

One of the Corps' best-loved hymn writers, General Osborn died last week.

DOLORES IS HOME



HOME AFTER TWO years in show business on the Continent is Miss Dolores Lane, of Summerhill Farm, Crays Hill, Wickford.

Dolores, an acrobatic and specialty dancer, was a former pupil of the Maia School of Dancing.

She hopes to work in England for a while before her next series of overseas engagements.

BOMB BLAST COULD HAVE KILLED

AN EXPLOSION caused by a home-made bomb echoed out at Basildon on Sunday night. It was heard as far as Laindon, two miles away.

The bomb—an eight-inch iron tube with a screw cap at each end—went off in the alley-way at the side of the Co-operative store in Basildon Town Centre.

Police found a large piece of metal embedded in a side door of the Co-operative. The wood of the door was splintered.

A Police spokesman said: "The explosion was so violent it might have killed somebody."

On Monday fragments of the bomb were examined by Police forensic and scientific experts.

Disqualified boy drove a van

DISQUALIFIED for driving for six months in October, 1966, a boy of 17 was seen by a Police officer driving a van in Poulton.

January, said Mr. Lane, Bowers, Madams, at Billericay Juvenile Court on Monday.

The boy admitted driving while disqualified, driving under age and having a Road Licence, test certificate and insurance.

He was ordered to pay £12, disqualified for driving for a further six months and put on probation for two years.

INTERNATIONAL NIGHT AT VANGE

Camp for dads and sons

WHEN BILLERICAY and Wickford Cub Scouts hold a father and Cub weekend at Thriftwood, Brentwood, from May 20th to May 21st, it will be the first in the country of its size.

"We hope to have about 400 there—200 fathers and 200 sons. Invitations are being sent to Packs throughout the County," Mr. Ron Mears, Assistant Cubmaster of the 1st Wickford, who is organising the event, told the "Standard."

Three radio stations will be set up by Marconi apprentices. They will be manned continuously during the 48 hours and an application has been made for a special call sign.

"We shall be in touch with Scout stations throughout the world," said Mr. Mears.

Other events planned include a camp fire sing-song and full-length feature films to be screened in the open.

A carnival will also be held and the theme will be "London through the ages."

£2,300 VALUATION

The Chairman of Basildon Council's Planning Committee has accepted the District Valuer's valuation of £2,300, plus surveyor's fees and the vendor's proper legal costs, for the acquisition of Mountain Ash, Queen's Park, Billericay, following the service of a purchase notice on the Council.



Vange Ladies' Club held an international night at the Community Hall, Church Road, on Wednesday week, and our picture above shows organisers and some of the guests.



THE CHURCH OF OUR LADY OF GOOD COUNSEL WAS THE SCENE ON SATURDAY OF THE WEDDING OF MR. JOSEPH McLAUGHLAN, SON OF MR. AND MRS. J. McLAUGHLAN, OF ATHLONE, EIRE, AND MISS JANET MAXWELL, DAUGHTER OF MR. AND MRS. A. MAXWELL, OF ALICIA CLOSE, WICKFORD. (SEE PICTURE ABOVE).

The service was conducted by Father Collings.

The bride was given away by her father and wore a full-length gown of white crepe, Empire style, trimmed with lace. Her bouffant head-dress was held in place by a white rose, with silver leaves; and she carried a bouquet of orchids and blue hyacinths.

Her attendants were her cousins, Miss Susan Attridge and Miss Pauline Evans, who wore dresses of midnight-blue velvet with white lace bodices, and carried pink carnations and red hyacinths.

The best man was Mr. Michael McLaughlan, the bridegroom's brother.

The couple are honeymooning in Jersey.

(Photo by Alan Caldwell)



Helpers pictured around one of the stalls at Wickford Women's Institute jumble sale held at Wickford Community Centre on Saturday.

Kingswood church's family party



Our picture above shows the company at Kingswood Baptist Church's family party, which was held in the Church Hall on Saturday. It was a very enjoyable time for all.

VETERAN READERS' COLUMN



She never lets them down!

"DO ALL you can do today - you might not be able to, tomorrow!" is the maxim of Mrs. C. H. Lowe, Chairman and Social Secretary of the Pitsea Fuchsia Club, who meet every week at the Working Men's Club Room, Vange. She is seen above.

She is one of the four remaining founder-members, who started the Club 15 years ago. Today it takes up most of her time, and she works incessantly for about 120 members who belong to it.

Pitsea, where she had a concert party with 16 members. They rehearsed at her house and were in great demand at local branches and clubs.

"I love dealing with people," says Mrs. Lowe. "At present we're planning a party for February 20th. We shall have tea and entertainment; and later on, we shall have a free day's outing."

This takes the place of the Christmas dinner that other clubs have.

Mrs. Lowe was born at Bow 73 years ago—and is proud to be called a cockney. Her early years were spent in West Ham and she went to school in Poplar.

Her first glimpse of the Pitsea district was at the age of 17, when her father bought a weekend bungalow at Pound Lane, Bow-lower Gifford. She kept house for him and cared for two younger sisters and a brother, until her father remarried. Then she went out to work, as a cork-dipper at the Boveril factory in City Road.

Mrs. Lowe has been married 49 years and had three children, all girls. She lost her home in London during the war, when a bomb was dropped on Beckton Gas Works. "I helped out where I could, then," she says quietly, "but folk don't want to dwell on those things, do they?"

She it was who christened the Club, after the Custom House Fuchsia Club, which she supported in London. Her first introduction to local clubs was the Pitsea No. 1 branch in Rectory Road,

They sang together Senior Citizens

COMMUNITY singing, with Mrs. Russell at the piano and solos from Mrs. Price saddened to hear of the death of one of their former members, Mrs. Basildon No. 1 Senior Citizens Club on Wednesday week.

Chairman Mrs. E. Thurston asked the members to observe a minute's silence for a former member. Sick members were wished a speedy recovery, and it was announced that the season's first outing would be on May 16th, to Hastings.

Ten was served to the members who attended by Mr. Chatting and helpers, and the meeting closed with the usual song.

Choir's visit

MEMBERS of the Basildon Choir, under their leader, Mrs. Hall, gave a concert to the members of Pitsea No. 1 branch at their weekly meeting at St. Michael's Hall. Members greatly enjoyed the programme of music, which included solos and duets.

Members regretfully wished their former Chairman, Mrs. E. Pugh, and her husband, the former Treasurer, farewell, before they moved away from the district.

Birthday honours were accorded to Mrs. Singleton, and a new member, Mrs. Chambers, received a hearty welcome.

The usual raffle for branch funds was held, and the meeting closed with the singing of "Auld Lang Syne."

Front-line experiences

AN interesting talk by their Chairman, Mr. E. Smart, was given to the members of the Basildon Physically Handicapped Club at their weekly meeting on Thursday.

Mr. Smart described his experiences in the front line during the 1914-18 War. After his talk, Social Secretary Mrs. Freeston proposed a vote of thanks to him on behalf of the members.

Mrs. Monk, Mrs. Edwards and Mrs. Greengrass were welcomed back after illness, and other sick members were wished a speedy recovery, including Medaimes Hayden, Ringrose, Powell, Higgins, Tan-Oldman, Lawless and Stephenson, and Messrs. Panton and Adams.

Ten was served by Mesdames Coatman, Morgan, Sixby, Faintnes, Maxam and Wainle.

The Chairman concluded the meeting with a vote of thanks to all helpers for their assistance, and to everyone who had brought gifts for the table.

DANGEROUS SPOT-ACTION DEMANDED

A unanimous vote to support their Secretary (Mrs. C. Cornish) in her fight to obtain a safety crossing or footbridge at the junction of Nether-mayne and The Knares, Basildon, was passed by the members of the Lee Chapel South O.A.P. at their weekly meeting on Wednesday week.

Members expressed the strongest feelings that the authorities should provide such a safeguard, to protect the lives of elderly folk and children who must cross this busy and dangerous road.

Birthday honours were accorded to four members, and letters from sick members were read. Mrs. Drury's concert party provided the entertainment for the rest of the afternoon, which was greatly enjoyed by everyone.

Afternoon of Bingo She will be missed

FRIDAY'S meeting of the THURSDAYS meeting of the Lee Chapel North Club was presided over by Darby and Joan. Mr. Hardy, the Vice-Chairman.

Sick members, including Chairman Mr. Casselene, Mr. Potter and Mrs. Lindsell, were wished a speedy recovery, and Mrs. Rowe was welcomed back after illness.

Birthday honours went to Mrs. Lenzy, Mrs. Leckert and Miss Harrison, and arrangements were made for various social outings during the summer season.

Members enjoyed an afternoon of bingo; tea was served by Mrs. Divine, Mrs. Chapman and helpers; and the meeting was a success.

VANGE O.A.P.

Members of the Vange O.A.P. stood in silent tribute for a former member, Mrs. Austin. Sick members were remembered, including Mrs. Cowling, Mrs. Clapp and Mrs. Harris. A bring-and-buy sale was planned for February 24th.

The afternoon's entertainment was provided by Mr. and Mrs. Frank White and their music. Friday Club last week.

FRIDAY CLUB FILM

A film show by Mr. John Pettit entertained Sunningmeade members at their weekly meeting.



Senior Citizens from Langdon Hills No. 1 O.A.P. branch are seen above before they entertained club members at their meeting held at Landon Community Centre last week. They are Mr. and Mrs. Rogers, Mrs. Hogben, Mrs. Mason, Mrs. Castle, Mrs. Jacobs, Mrs. Young and Miss Harrison.



This picture shows members of Langdon Hills Over-60 Club at one of their meetings at the Women's Institute Hall, Samuel Road.

They had their Valentines!



THEY SENT THEIR VALENTINES EARLY AT FRYERNS! THE FRYERNS PLAYLEADERSHIP GROUP HELD THEIR VALENTINE DANCE AT THE HALL ON SATURDAY, AND ABOVE ARE SOME OF THE YOUNG PEOPLE WHO HAD A VERY ENJOYABLE TIME.



TEDDY BEARS, CAKE TINS, A GLOBE AND VEGETABLE RACK. THEY WERE ALL PART OF THE JUMBLE COLLECTED BY THE 7th BASILDON (GHYLLGROVE) SCOUTS FOR THEIR JUMBLE SALE AT ST. MARTIN'S CHURCH HALL ON SATURDAY. SOME OF THE HELPERS ARE SEEN ABOVE.



THEY HAD A BUSY TIME, TOO, AT WICKFORD COLLECTING UNWANTED ARTICLES FOR THE JUMBLE SALE ORGANISED BY WICKFORD CONGREGATIONAL CHURCH WOMEN'S FELLOWSHIP. SOME OF THE HELPERS ARE SEEN ABOVE BEHIND ONE OF THE STALLS.

GUILTY OF LODGING ALLOWANCE "FIDDLE"

CHIEF PROSECUTION witness at an Essex Quarter Sessions trial of three men alleged to have committed a lodging allowance "fiddle" was a Tilbury woman, who, at the same Court on January 13th was put on probation for three years after pleading guilty to aiding and abetting them and also another man.

She was Mrs. Audrey Dorothy Clark (36), of Dock Road, Tilbury, and gave evidence in the case, in which Richard Charles Burgess (44), of Barrington Gardens, Basildon; Trevor Desmond Pybus (37), of Thurbar Road, Bellingham, S.E.6, and Cedric Cyril Harries (63), of Hyewood Lane, Canewdon, each pleaded not guilty to three charges of obtaining £7 by false pretences from their employers, Messrs. James Kilpatrick, Ltd., at Tilbury Power Station.

On Friday at the close of a three-day trial they were found guilty, and Burgess was fined a total of £30 and Pybus and Harries £21 each.

Donald George Sawyer (31), of Beech Grove, Higham, Kent, who pleaded guilty to three similar offences was fined a total of £9.

Mr. E. Stone (prosecuting), said men working for Kilpatrick's were entitled to a £5 a week allowance to cover travelling to and from work. Half of this was tax free. If they lived too far from work to home they could claim a £7 a week tax-free lodging allowance.

It was alleged that in order to get this bigger allowance they got Mrs. Clark to sign receipts purporting to show they were lodging with her, when in fact they were not doing so.

Mrs. Clark said she occupied a two-bedroomed flat with her daughters aged 13 and 11. In about March last year Burgess asked her if he and other men could use her name and address for the payment by receipts. Only Burgess and Pybus called at her house to make the payments.

Burgess, who sometimes paid for someone else, paid her about 20 times and Pybus on six or seven occasions. Altogether she received between £30 and £40. On two nights Burgess slept in the kitchen of her flat. The other men never slept there.

Cross-examined, she agreed the money was paid by the men for the retention of accommodation, if ever they needed it, although she had no room for any lodgers.

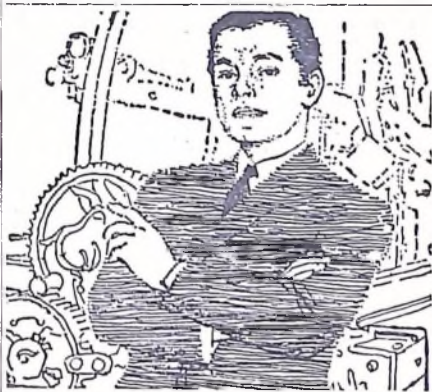
Burgess said that having seen her advertisement for a lodger he called on Mrs. Clark and told her he would like to retain a room, for which he would pay £1 a week. She named and subsequently he and Pybus spent a few nights at her house. Then she got a full-time lodger, so they did not go there again.

At no time was there any intention to dishonestly get money from his employers. He claimed that as a travelling man he was entitled to a tax-free £7 a week lodging allowance, even though he went home each evening.

Pybus said that because he lived more than 15 miles from his work he believed he was entitled to the £7 a week lodging allowance. He understood that to prove his entitlement he had to produce a formal receipt regarding lodgings. Accordingly he saw Mrs. Clark and told her he wanted to retain a room at her home to comply with the firm's regulations. She agreed, and subsequently he spent two or three nights there. "I had no intention of deceiving my employers," he added.

Saying he considered he was entitled to the £7 a week allowance, Harries told the jury he booked a room with Mrs. Clark for a week at that time he was not sure if he would require permanent lodgings with her. He did not, in fact, stay there.

"There was no deception because Kilpatrick's knew what was going on," he declared. "I did not believe I was wrongfully receiving money. I was claiming what I was entitled to."



Frank makes dress fabrics—and lets everyone know about it

Frank makes all kinds of dress fabrics, from filmy chiffon to school serge. And he advertises them.

"Take this cloth," he said. "One machine can make up to 1,000 yards an hour. Selling at that rate, we can buy raw materials more cheaply—in large economy sizes, if you like. If we didn't advertise, we'd be lucky to make 300 yards an hour without having full warehouses. And it would cost half as much again. Advertising can keep our machines and our staff usefully employed, and that cuts overheads. And we can mass-produce from the word go on a new fabric. It pays me to advertise, but my customers buy the goods more cheaply."

Increased demand for Frank's goods means lower production costs. Advertising a new product can establish a big demand overnight, and that means production can begin at an economic level. Advertisements keep regular customers interested and attract new ones; they help keep demand and prices steady; they are the cheapest way of getting a wide range of goods into the shops and then into the shopping basket.

"But, mind you, it's got to be good. People might buy a poor fabric once. But they wouldn't risk being bitten twice. They'd look at the name again, and avoid every single line we make."

Advertising helps the manufacturer increase awareness of his product, but a poor product will harm his reputation. He is constantly competing with his rivals to produce a better product at a comparable price—to give better value than the others. Money spent on advertising is not an "extra" but an essential part of manufacturing and selling costs; the part that helps the buyer get better value for money.

Issued by the Newspaper Society

SPECIAL
OFFER

THIS WEEK

Watch for the above
Sign in the window of

kitts

Household and Domestic Centre

20 HIGH STREET, BILLERICAY

THE FIRST OFFER WILL BE ADDIS SQUEEZE MOPS

Garden
tools

Tools for you — that are tough.
Tools that are best. Designed for a
man to work with.

The garden tools at "Co-operative
House" will last for years.
You couldn't do better anywhere.

Large Garden Spades, £1-5-11

Border Spades, £1-2-6

Large Garden Forks, £1-5-11

Border Forks, £1-4-9

Hand Forks, 4/6

"Prestige" Chrome Weeding Trowels
and Forks, Guaranteed 10 years,
12/11 each.

Planting Trowels, 19/6

Hand Forks and Trowels, £1-9-6

"Skyline" Chrome Garden Tools—

Hand Forks and Trowels, 5/11

Planting Trowels, 7/11

— Lawn Mowers too!

● Use Mutuality Club for Spring Shopping

"Co-operative House"

GRAYS CO-OPERATIVE SOCIETY LTD

BASILDON TOWN CENTRE

CO-OPERATIVE FUNERAL
FURNISHING SERVICE

We attend to every detail with
dignity and sincerity
FOR IMMEDIATE SERVICE

131a HATHAWAY RD., GRAYS

OR at any Society Branch

Telephone: GRAYS (THURROCK) 2852

or 2442 (Day and Night)

Mr. Boniface spoke
for hours

(CONTINUED FROM FRONT PAGE)

operation by 1983. The gross acreage of this site was 112 acres.

THE COMMUTERS

The problem of the commuter was the next item on Mr. Boniface's agenda. "It was here when we came, it is here today and we will always have it."

"People will always follow work and I venture to suggest that the young people who form a large part of our commuting population will continue to travel out until Basildon provides enough work for them."

"Basildon has done well in providing 119 factories of a variety of trades, but it is at the bottom of the league as far as office accommodation is concerned."

We have only 99,700 sq. ft. in the Town Centre and

ABOUT 80 PER CENT
OF BASILDON'S IN-
DUSTRY CAME FROM
LONDON. IT WAS
REVEALED BY MR.
BONIFACE.

most of this is occupied by the G.P.O. and the Council.

"The need for office accommodation here is vital, but everyone recognises this except the County Council."

"Why are they standing in our way and saying let us have no office development in Basildon for the time being?"

"The Corporation have plans, Mr. Boniface continued, for 30,000 sq. ft. of office accommodation

land. It represented 13.1 acres per 1,000 population much higher than national recommendations.

SPORT

He said recent years had shown a change of emphasis in sport. There was more personal participation and less spectator activity. The Corporation plan would allow for this.

LAINDON'S SHOP-
PING AND ADMINI-
STRATIVE CENTRE
WILL BE STARTED
THIS YEAR. ENCAR-
GING WORKS WILL
START IN THE SPRING.

The aim of the plan is to relieve the congestion of Londontown for work and play, and to build the town profitably.

"This is a social experiment which can also be a financial success," said Mr. Boniface. "Many other towns are already financial successes, but in Basildon it has not been so easy."

"Already we have spent £5,000,000 clearing away shacks and it will take much longer for us to be financially successful."

"We can never be certain of anything today, but one thing is certain: there is more chance of a town of 100,000 people with its regional draw being successful than a town of 10,000."

"Basildon Council see this and are supporting the plan."

CORPORATION'S RECORD

Since the start of the New Town, the Development Corporation have purchased 4,941 of the 7,818 acres in the designated area, the Master Plan Inquiry Inspector was told on Tuesday. This had been done in 7,839 separate acquisitions.

By February 1st 119 factories had been built on 1,330 acres of industrial land, and only 44 acres of industrial land still remained to be developed. The Corporation have built 14,840 houses; the Urban Council 1,591 houses; private development 1,102 houses and self-build groups 44 houses. The Corporation have provided 4,443 garages.

Shop units provided in the Town Centre amount to 198, with 120 units elsewhere.

About 14.18 miles of classified roads have been built and 57.2 miles of unclassified roads.

split between the Town Centre (£50,000 sq. ft.), Pitsea (£250,000 sq. ft.) and Laindon (£100,000 sq. ft.).

If offices are provided, steps must be taken to enable people to come to Basildon to work and this was one reason why the provision of a Basildon Station in the Town Centre was vital.

Under the plan it is proposed to provide that station in a commercial block, which will help pay for it. A design was soon to be produced.

Mr. Boniface said the Corporation had long since realised the possibilities of Basildon as a regional centre for shopping, recreation and education.

The Town Centre, for which a new plan was being prepared, would be the focal point of this centre.

From a recreation point of view, the plan would provide opportunities from the cradle to the grave.

Mr. Boniface said the Corporation were being accused of cutting down on open space, but in fact, they were to provide another 800 acres for public use.

This would give Basildon 1,840 acres of open space, including 240 acres of wood-

They realise that the assets will eventually be handed over to the ratepayers of the area through the medium of the Council.

In conclusion, Mr. Boniface said the Minister of Housing seemed to be satisfied in seeing that Basildon is capable of accommodating 130,000 people and the purpose of the inquiry, as he said, was to consider whether this could be done consistent with good planning.

THIRTY-THREE PER
CENT OF BASILDON'S
WORKING POPULA-
TION COMMUTE OUT
OF THE AREA DAILY.
THIRTY-EIGHT PER
CENT OF THE COM-
MUTERS ARE RECENT
SCHOOL LEAVERS OR
YOUNG PEOPLE.

"In my submission, this road plan is consistent with what will be required by it and it will help Basildon make a major contribution to the congestion of London," he said.

BASILDON DOES NOT
EXIST FOR FORD'S!

THE FORD Motor Company seem to think that Basildon exists for them, Mr. R. C. C. Boniface, the Development Corporation's General Manager, told the Master Plan Inquiry on Tuesday.

"This is certainly not so," he said, "and we must not let Basildon become another Dagenham."

Mr. Boniface said Ford's had originally objected to the new plan on almost every score. Since then they have adopted "a more sensible attitude."

The General Manager disclosed that arguments had been going on over the extent of expansion to the Ford tractor plant.

Less than 48 hours before the inquiry the Board of Trade had given them permission to go ahead with a 200,000 sq. ft. extension on the site.

But Mr. Boniface said the Corporation would utterly oppose any proposal to extend the tractor boundary outside the present boundary.

"There is a place for Ford's in this town, but face,



There were no Valentine cards for Corporation General Manager Mr. R. C. C. Boniface on Tuesday, pictured here settling down for his long stint at the Laindon Community Centre, during which he will answer over 50 objections at the Revised Master Plan Inquiry. He made a long, long speech, and was grateful for the liquid refreshment—water!

Wickford S.A.
Sunday
School
prize-giving

BOOK PRIZES for good attendance during the year were handed out to Wickford Salvation Army Corps' Sunday School pupils on Sunday evening.

The annual prize-giving was performed by member Mr. Jim Abraham, a student teacher at a Chelsea training college, who was home for the weekend and he also presented a shield and book tokens to the winners of the Junior Torch four-a-side football competition.

They were Alf Skiller (skipper), David Hawes, John Smith and Anthony Barker. Runners up were Eric Eaton, David Dally, Mark Evans and Michael Woodbridge.

The Sunday School shield for efficiency went to the "Victors" class and their teacher, Mrs. Margaret Gentry.

Newcomers to the Sunday School were also given small prizes, as encouragement.

Prizes, boys—Mark Bayliss, Paul Bayliss, Bramwell Taylor, Nigel Stock, Kevin Warren, Anthony Barker, Mark Evans, John Evans, Tony Woods, John Gahan, David Kirkwood, S. Gahan, Stephen Gravel, A. Kirkwood, D. Evans, Peter Munster, Michael Merrington, A. Woods.

Girls—Janet Waymont (last prize), Susan Prior, Moira Golding, Judith Stock, Janet Warren, Jackie Holland, Elaine Golding, Beverley Barker, Kay Wells, Elaine Tiliann, Helen Weymont, S. West, L. Morley, L. Weymont, A. Morley, R. Bradley, C. Symanski, Y. Clarke, L. Flatman, L. Christie, M. Bingham, A. Jupp, J. Symanski, Valerie Don, Vivienne Murphy, Valerie Wood, Shirley Wood, Chilian Toppie, Rosemary Wood, C. West.

Local M.P.
speaks at
child care
conference

CLOSER control over social workers was called for by local M.P. Mr. Eric Moonman when he spoke to the Joint Child Care Conference at Llandudno at the weekend.

He also urged the creation of a new Government Ministry to be responsible for family service work. Criticising the present transferring of cases between departments, he said: "Families who are homeless—or needing help—should not need to have the additional burden of fitting in to the convenience of a local authority structure."

The trend towards larger units of local government should be encouraged to go even further. The children's service is not suited to the parish pump type of local government—indeed, there are very few creative services which are."

A report by the Seeborn Committee looking into child care services is expected to be published shortly. Commented Mr. Moonman: "What is required, by the autumn at the latest, is action."

He hoped the Committee would suggest a family service department of the Government, to take responsibility for training all social workers except those at university.

He went on: "Whatever may be decided on this question of the family service, its structure must be given close attention. Both at local and Government levels a true family service cannot be tacked on to an existing department."

Housing also came into Mr. Moonman's speech. He said the children's service had a right to expect from the Government that the housing programme should never go by default.

Proper accommodation was a vital factor in the creative side of children's care. Television's "Cathy Come Home" drama emphasised this.

"This country spends £1,000,000 a year on children who are in care only because their parents have no home."

"My experience as chairman of a children's committee in a London borough with a particularly heavy care load revealed there were families that were costing us £3,000 a year on the upkeep of children in care."

The Corries
will play
their own
invention

ON SATURDAY Billericay and Basildon Folk Club held their first Basildon meeting, with the famous Scottish folk singers, The Corries, as guest artists at St. Martin's Hall.

Well known for their records and radio and TV appearances, The Corries are among the finest musicians on the folk scene.

Instruments they play include the Northumbrian pipes, a special form of bagpipes operated with the arm and not blown, also a 28-string guitar, their own invention.

Supporting The Corries will be club singers The Freckled

Woodlands Boys' School open day



Skilful lads who will make ideal husbands!

A NEW APPROACH to open days was tried out at Woodlands Boys' School, Basildon, on Wednesday.

In place of the traditional open day, with static exhibits, Headmaster Mr. J. Woodward and his staff planned a more active programme of exhibitions, displays and events. They were visited by 800 parents and friends.

To enable shift-working parents to see the exhibition, the school was open for two sessions, in the afternoon and evening.

The exhibitions included a selection of the work of each year in woodwork, metalwork and technical drawing; displays of apparatus, work and methods in use in the mathematics and science departments and examples of art work throughout the school.

In the English department there were wall displays, books in use, and examples of new writing, which had been contributed by boys from all classes, and which some of the boys were rolling off on the duplicator for distribution during the evening.

The continuous displays were manned by boys engaged in routine school work. There was a constant programme of physical education in the gymnasium, and demonstrations of drama and music in the main assembly hall.

Activities like boat building, glue testing, casting and machine work, fitting, enamelling, etc., could be seen in progress in the woodwork and metalwork rooms, and every available niche displayed the

best examples of each type of work.

Some boys acted as ushers, and car park attendants, marshalling cars and people with polite efficiency.

One of the most striking selections of exhibits was by the woodwork classes. Articles are extremely ambitious. One ranged from traditional book-shelves and tables to wooden set of chessmen, piece by piece, fruit bowls, platters for bread. He has three figures already

crucets, with each piece fitting neatly into a stand; table and standard lamps, and skittles sets. Some articles were stained and varnished, others were simply polished. Obviously, the boys of Woodlands School will one day make excellent husbands!

The pottery room was full of interest, and some of the tiles designed and made by the boys, were displayed in the entrance hall of the school. Boys produce their own designs for all the pottery, and some are extremely ambitious. One boy is producing an outside set of chessmen, piece by piece. He has three figures already



Mr. and Mrs. Perry are watching Edward Mantell (15) at work on the potter's wheel in the pottery room.

Some of the pupils are engaged in making "Tom Sawyer" as part of their English work, under the direction of Mr. Jones, head of the English Department. He is seen operating the camera. One of the films the English Department made previously was shown at the evening session.

completed and will shortly start work on the Queen. This excellent exhibition gave parents a real insight into the work done by their sons. Mr. Woodward and his staff were simply polished. Obviously, the boys of Woodlands School will one day make excellent husbands!

Girls were lunchtime shoplifters

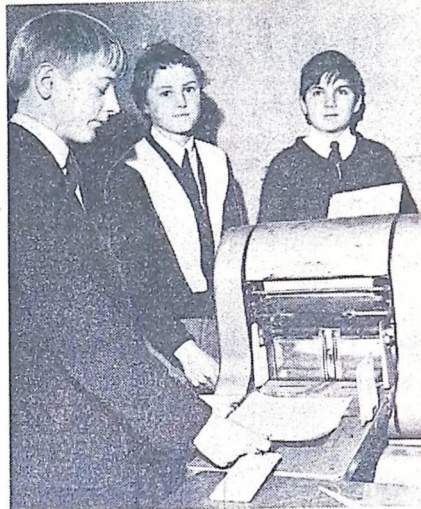
TWO 14-years-old girls left their school during lunch times and helped themselves to whatever they liked from self-service store counters, said Mr. J. Madams, prosecuting at Billericay Juvenile Court on Tuesday.

The girls admitted the theft of articles ranging from key-rings to cosmetics.

The girls, who had previously had good characters, were each put on probation for a year.

"We are giving you a chance to redeem yourselves," said the Chairman, Mrs. C. Gunter.

New writing



SOME OF THE BOYS ARE PRODUCING "NEW WRITING"—A SELECTION IN MAGAZINE FORM OF THE WORK OF BOYS FROM ALL CLASSES. THE "SKINS" FOR THE DUPLICATOR WERE PREPARED BY THE SCHOOL SECRETARY AND ONE OF THE MASTERS, BUT THE BOYS ARE ROLLING OFF THE SHEETS THEMSELVES FOR DISTRIBUTION TO PARENTS. MANNING THE DUPLICATOR ARE PAUL PHELPS (15), RALPH ARBUTT (14) AND DAVID GREEN (15).



WHEN AN ENGINE WAS GIVEN TO THE SCHOOL THE BOYS HAD TO FIND OUT ITS TYPE AND PROBABLE MAKE BY A SERIES OF TESTS. THEY MEASURED THE BORE AND STROKE LENGTH AND DISCOVERED THE CUBIC CAPACITY OF THE CYLINDER BLOCK. AT WORK ON IT ARE CHARLES LOATES AND NIGEL BARTON, BOTH 15.



C. LENGTHORNE AND D. GERAIN, BOTH 14, DEMONSTRATE THE PREPARATION OF SALTS IN THE SCIENCE LABORATORY.

Steven Simmons (12) and Alan Baptist (11) demonstrate the Wimshurst machine for the production of static electricity.

Your cinemas

Ritz, Billericay
 Showing Laurence Harvey, Claire Bloom and Terry-Thomas. The Wonderful World of the Brothers Grimm (Monday for three days) centres round the brothers who wrote so many famous fairy tales.

The Fighting Prince of Donegal (Thursday for three days) is a rollicking, colourful, historical adventure romance about Irish tussles with the English in Queen Elizabeth I's time.

Century, Pitsea
 Showing February 20th for one week. "Lady and the Tramp" is a full-length cartoon about the courtship of a blue-blooded spaniel and a raffish mongrel. Tramp, a notorious heart-breaker among the dogs of the area.

Radion, Laindon
 "The Wonderful World of the Brothers Grimm" (Monday for three days) stars Laurence Harvey, Claire Bloom and Terry-Thomas, and tells the story of the brothers so famous for their fairy tales.

Ritz, Southend
 "The Fighting Prince of Donegal" (Sunday for seven days) is a rollicking, colourful, historical adventure romance about Irish tussles with the English in Queen Elizabeth I's time. Played against a background of charming countryside and beautiful medieval castles, it provides both exciting and humorous entertainment.

Odeon, Southend
 "Thunderbirds Are Go" (showing up to and including Wednesday) features the puppet adventures of the first expedition to Mars and all the perils they encounter. Zeno X is a terrible creation and the Martian serpents have a gaseous fascination, but Jeff Tracy and his sons still carry out their incredible achievements.

ABC, Southend
 "Danger Zone" (showing up to and including Wednesday) is a sincere, but heavy-handed, thriller on the dangers of illegal drug traffic, starring Stephen Boyd, Yul Brynner, Angie Dickinson and other well-known stars.

Essoldo, Westcliff
 "Lady and the Tramp" (showing up to and including Wednesday) is a full-length cartoon about the courtship of a blue-blooded spaniel and a raffish mongrel. Tramp, a notorious heart-breaker among the dogs of the area.

Rio, Canvey
 Sunday, Tuesday and Wednesday. This Property Is Condemned is a fast-paced story of a young man living a lonely gipsy life in a deserted house. Friday for three days Saturday "California Holiday" stars Elvis Presley as a "non-singer" who likes a free and easy life travelling all over America with his group.

GRANADA EAST HAM GRA 3000
 ON STAGE • Friday, March 10, 7.0 & 9.10 p.m.
GENE PITNEY
 Britain's Sensational Hit Recorders
TROGGS
 SOUNDS INCORPORATED • DAVID GARRICK
 PLUS TREMENDOUS SUPPORTING BILL !!!
 BOOK NOW • 6/6, 9/6, 12/6, 15/- • Telephone: GRA 3000

★ **TOP ENTERTAINMENT**
 on THURSDAY, FEBRUARY 23rd
 WITH
CAT STEVENS
THE MARTELLS and Radio Caroline DJ
at TOP DECK (MEADS)
 near Grays/Dartford Tunnel on A13
 • TICKETS AT DOOR •
 Fully Licensed Bar — Snacks — Spacious Car Park
 Telephone: RAINHAM 54913 for details
 FREE TRANSPORT Leaving Southend Kursaal at 7 p.m.
 Basildon Bowling Alley at 7.30 p.m.

THURSDAY, FEBRUARY 23

Nicholas Youth Centre
 proudly presents
 In Basildon for the first time

ZOOT MONEY
 and his Big Roll Band

Tickets 8/- — At Door 10/6

Resuscitation lesson



A resuscitation lesson in progress for Guides and Brownies at the Guides' exhibition in the Women's Institute Hall, Billericay, on Saturday. In charge Miss E. Gale (left), Captain of 1st Chantry Company.

Widow's battle with Corporation—she will keep her home

M.P. must pay bill

BASILDON Council are to allow Member of Parliament Mr. Eric Moonman to hold his monthly "surgeries" free of charge at the Fadderwick Council Offices in future.

But first of all he must settle a £10 bill, alleged to be outstanding.

The bill has accrued since the Council first agreed to let Mr. Moonman have a room at £1 a time.

A Labour Group official said this week: "We thought all the way along that the Member of Parliament should not be charged and it would be a gesture on the part of the Council if they waived the outstanding amount."

WHERE THE playing field should be for Chalvedon Comprehensive School, Pitsea, is a nine-roomed bungalow. In it lives 76-years-old widow Mrs. Jenny Shaw.

And that seems the way things will stay. For after a fascinating legal tangle, Basildon Development Corporation have shelved their attempt to remove Mrs. Shaw.

"For 12 years and eight months they have been trying to get me out," she told a reporter. "But they haven't offered me anywhere suitable—and I like it here."

Her bungalow in Orplington Chase was remote in the heart of Pitsea's "Indian country." Not now, for the Corporation have built a new road to serve the school. It is just right for Mrs. Shaw.

One of the four bungalows offered to her by the Corporation she called a shack, saying: "It was a stinking hovel which has now been pulled down."

Mrs. Shaw claims a collection of three compulsory purchase orders and two notices to treat.

"They only want to give me a pittance," she said. "They had threatened to move me out by force."

A Corporation spokesman explained the unprecedented Mrs. Shaw case to a reporter. "The position is extremely complicated," he said. "We originally tried to buy her property in the normal way. Then four years ago we made a compulsory purchase order. She objected and appeared before a Ministry Inspector who assured her the Corporation would provide suitable alternative accommodation."

Since that time, the spokesman went on, they had tried to give her suitable accommodation—but they had not been able to agree as to what was suitable.

"Her property wasn't very valuable before Wickford Avenue was built," he pointed out. The amount of compensation would have to be based on the value of the property before the new road was built.

"We found it impossible to find a freehold property which would suit her—at that price. Such a property doesn't exist."

Also Mrs. Shaw has a valuable collection of

antique furniture which means 8ft. 6in. high ceilings are needed in her new home.

Another complication, the spokesman said, is that Mrs. Shaw has always refused to produce evidence of ownership and claims she holds two plots. So the Corporation asked the County Council for a certificate of alternative development for the land.

"We got this with consent to build three houses," the spokesman continued. "This would have increased the compensation a lot, but Mrs. Shaw, unfortunately, still refused to negotiate with the District Valuer."

Then the story took another turn. A man came along saying his grandfather owned land in Pitsea—and produced plans of part of Mrs. Shaw's land. As he has some sort of interest in the property, the Corporation were forced to serve him with notice to treat.

Mrs. Shaw was not in contact with solicitors at the time and to complicate the matter still further, the man has since died and his affairs are in the hands of executors.

Essex County Council have now said they can do without Mrs. Shaw's land. So it now seems certain Mrs. Shaw will be allowed to stay where she is.

The spokesman stressed: "The last thing the Corporation want to do is turn her out on the street. We have engaged in this running battle on the friendliest of terms."

PRIZES FOR THE EATING
 The Basildon Council's Play Leadership scheme is to be extended this year. Facilities are to be provided in Lake Meadows Recreation Ground, Billericay, during the school summer holiday.

CENTURY PITSEA
 Vange 2204
 FEBRUARY 20 WEEK
 open 1.10
WALT DISNEY'S
LADY & THE TRAMP
 3.0 6.5 9.5
ROYAL DANISH BALLET • BALLERINA
 (INCLUDES EXCERPTS FROM "SWAN LAKE," "LES SYLPHIDES")
 1.20 4.20 7.20
 Sunday, February 19 THE LONG AND THE SHORT AND THE TALL
 MAN ON THE PROWL
 adults only

RITZ BILLERICAY 259
 Sunday, Feb. 19 ONE DAY
 JULIE HARRIS CLAIRE BLOOM
THE HAUNTING
 (X)
 Mark Richman Dorothy Dandridge
 THE MURDER MEN (X)
 Adults Only L.C.P. 6.30
 Monday, Feb. 20 THREE DAYS
 Special Half-Term Holiday Bonus
 Laurence HARVEY Claire BLOOM
THE WONDERFUL WORLD OF THE BROTHERS GRIMM
 4.45 7.55 Mat. Mon. 1.40 (U)
 LAUREL & HARDY'S LAUGHING 201
 Last Complete Programme 6.45
 Please Note Special Mat. Mon. 1.40
 Thursday, Feb. 23 THREE DAYS
 Peter MCENERY Susan HAMPSHIRE
 + Walt Disney's
The Fighting Prince of Donegal
 5.0 6.55 Mat. Sat. 1.55 (U)
 Tom Trvon Stephen McNally
STAMPEDE AT BITTER CREEK (U)
 Last Complete Programme 6.45

RADION LAINDON 2190
 Sunday, Feb. 19 ONE DAY
 RODERICK CRAWFORD
 VALENTINA CORTE
SQUARE OF VIOLENCE
 5.05 8.10
 Rory Calhoun William Burt Foster
THE YOUNG AND THE BRAVE
 Last Complete Programme 6.45
 Monday, Feb. 20 THREE DAYS
 Special Half-Term Holiday Bonus
 Laurence HARVEY Claire BLOOM
THE WONDERFUL WORLD OF THE BROTHERS GRIMM
 4.45 7.55 Mat. Mon. 1.40 (U)
 LAUREL & HARDY'S LAUGHING 201
 Last Complete Programme 6.45
 Please Note Special Mat. Mon. 1.40
 Thursday, Feb. 23 THREE DAYS
 Robert VAUGHAN David McCALLUM
ONE OF OUR SPIES IS MISSING
 5.20 8.25 Mat. Sat. 2.20 (U)
 Herman's Hermits Shirley FAIRBANK
 HOLDS ON
 Last Complete Programme 6.55

YOUR GUIDE TO THE BEST ENTERTAINMENT

ODEON SOUTHEND Tel: 44434
 THURSDAY, FEB. 16 7 DAYS
 Doors Open Week 1.30 Sun. 4.0
 GERRY ANDERSON'S
Thunderbirds Are Go
 Technicolor Supermarimation (U)
 Wk. 2.10 5.30 8.50 Sun. 5.35 8.55
"NAMU THE WHALE"
 Colour by De Lute (U)
 Wk. 3.50 7.10 Sun. 4.30 7.30
 THE SATURDAY CLUB FOR BOYS & GIRLS, 9.30 a.m. Adm. 6d. & 9d.

RITZ SOUTHEND Tel: 64683
 SUNDAY, FEB. 19 7 DAYS
 Doors Open Sun. 4.0 Week 1.10
THE FIGHTING PRINCE OF DONEGAL
 PETER MCENERY
 SUSAN HAMPSHIRE
 Technicolor
 Sun. 4.50 8.20 Wk. 1.40 5.10 8.40
THE INCREDIBLE JOURNEY
 Technicolor
 Sun. 6.35 Wk. 3.25 6.55 (U)

ABC SOUTHEND Tel: 44580
 THURSDAY, FEBRUARY 16 Comm. 1.30 Sunday 4.0 Comm. 1.30
 Trevor Howard Angie Dickinson E. G. Marshall
DANGER GROWS WILD
 Eastman Colour Week 1.45 5.15 8.45 Sun. 4.55 8.35 (A)
 BARBARA BARRIE ONE POTATO, TWO POTATO
 Week 3.30 7.0 Sun. 6.45 (A)

KURSAAL SOUTHEND Phone 662767
DANCING
BALLROOM
 SATURDAY, FEBRUARY 18, 7.30 to 11.30 p.m. • • • 8/-
HOWARD BAKER and HIS BAND and DINO'S CLAN
ESTUARY ROOM
 WEDNESDAY, FEBRUARY 22, 8 to 11 p.m. • • • 8/-
HOWARD BAKER and HIS EMBASSY BAND
 STRICT TEMPO SESSION

WALK IN — DANCE OUT
 OUR PROMISE IF YOU JOIN OUR
NEW BEGINNERS' CLASS
 Commenced Saturday — 8 p.m. — 11 p.m. Admission 4/6
 OTHER CLASSES
 Monday: ALL AGES BEGINNERS IN STAGE, 8.30-10.30, 4/6
 Tuesday: OVER 25s BEGINNERS ONLY, 8-10.30, 4/6
 Wednesday: ALL AGES BEGINNERS AND IMPROVERS 8-10.30, 4/6
 Friday: ALL AGES BEGINNERS ONLY, 8-10.30, 4/6
 PRIVATE LESSONS AND CLASSES EVERY DAY
WESTERN SCHOOL OF DANCING
 Rear of Fire Station, On High Street, Hadleigh
 Telephone 559836

TAXI
 24-HOUR RADIO SERVICE
 NEWTOWN CARS
LAINDON 3933

Jesus Christ, The Same Yesterday
 and Today and For Ever
 Do you believe it? We have
 proved it at the
Elim Pentecostal Church
GUN HILL PITSEA
 Hear some more of this and more
 SUNDAY AT 6.30 P.M.
 — ALL ARE WELCOME —



RURAL DEAN RECALLS HALCYON DAYS OF LAINDON

BASILDON'S SHOPS may still leave something to be desired, but people do not flock to the Town Centre for nothing. So said the Rural Dean, Rev. Arthur Dunlop, at Basildon Chamber of Trade's annual dinner on Tuesday.

Recalling the "halcyon days of Laindon," when he was at school there, the Rural Dean said he had always had a great veneration for shopkeepers and well remembered some of them.

On the other hand he doubted whether any of them remembers the "snotty-nosed little boy" who had called at their shops.

"Laindon was quite a swinging place in those days," said Mr. Dunlop. "I hope something new and marvellous will come in its place."

He was replying on behalf of the guests to a toast from Mr. Peter Toomey.

More than 100 people attended the dinner. Danc-ing was to Ronnie Day and his music.

TWO MORE LIBERAL CANDIDATES

THE newly-formed Burstead Ward Liberal Association has announced their prospective candidates for the Urban Council elections in May.

They are the Association's Chairman, Mr. H. R. New (26), Bank of England clerk, of Lorraine Close, Billericay, and building site checker Mr. Edward Houghton, of Gamels Road, who is the Secretary.

A halfway rest!

BILLERICAY Residents' Association were asked on Tuesday if they could do anything about providing a seat halfway up Hillside Road.

"It's such a climb for old folk they get out of breath and could do with a rest," explained Mr. P. Vardon, at the annual meeting of the Association's Sunnymede Area Committee.

"A certain amount of money is going to be allocated this year for seats in and around Billericay by the Billericay Carnival Association," said Association Secretary Mr. Brian Hooks. "Hillside Road, I would think, would come fairly high on their list."

THE TOAST IS TO DUSTMAN TOM

MR. TOM Bradbury has been a dustman for 21 years. But on Tuesday he swapped his overalls for a dress suit and was a personal guest of Basildon Chamber of Trade's President at the Chamber's annual dinner.

Other guests of Mr. Jim Bews sitting among the 110 traders at the B.U.'s Eye were Mrs. Elizabeth Fawcett, from Basildon Telephone Exchange, and P.C. Allan Levey.

Explained Mr. Bews: "I don't feel occasions like this are the time for saying what we think ought to be done, but a chance to say thank you. These are just a few of the people who keep the town going."

"Without them we would not be in business." For dustman Tom the outing was a "once in a lifetime" event.

"Nothing like this has ever happened to me before," he said, sipping gin and tonic with his wife Emily beside him. "Most

shopkeepers appreciate the job we do, but none of them have gone this far before."

"I collect the rubbish from Mr. Bews' shop twice a week. I think he and his family are very fine people."

How did he get the job of going to the dinner? "My mates nominated me, I was very pleased."

Telephonist Mrs. Fawcett and her husband were a so delighted with the invitation. "My name was the lucky one drawn out of the hat," she said.

"A very good idea of Mr. Bews," agreed P.C. Levey and his wife Yvonne. "We've never heard of anything like it before."

The picture below shows Toastmaster Cyril S. Watts, Mr. Bews and dustman Tom.

PEOPLE AT THE TOP TABLE AT BASILDON CHAMBER OF TRADE'S ANNUAL DINNER INCLUDED COUN. BARON BURN (CHAIRMAN OF BASILDON COUNCIL), MRS. CHRISTINA GADSDON (CORPORATION BOARD MEMBER), CHIEF SUPERINTENDENT VICTOR COOK (BASILDON POLICE) AND REV. ARTHUR DUNLOP (THE RURAL DEAN). THEY ARE PICTURED WITH CHAMBER PRESIDENT MR. JIM BEWS AND MRS. BEWS (SEATED RIGHT).

Danger to motorists

SUNNYMEDE Area Committee of Billericay Residents' Association have written to Basildon Council about the right-angled bend in unlit Outwood Common Road, near Ramsden Hall Special School. Not signposted, it was presenting the unwary motorist with a dangerous situation, members heard at the Committee's annual meeting on Tuesday.

There was good news from the Council, however. It was a bend where they considered "The sharp deviation chevron would be appropriate."

FATAL COLLAPSE
Mrs. Olive M. Holland, 60 years old, of Gladwyns, Basildon, collapsed on Wednesday near her home and was found to be dead on arrival at St. Andrew's Hospital, Billericay.

Jumble Sale
METHODIST CHURCH HALL
WESTERN ROAD, BILLERICAY
Saturday, February 25
at 2 p.m.

FOLK!
The Corries
PLUS THE FREEKIND
SATURDAY, FEBRUARY 18
ST. MARTIN'S HALL
BASILDON TOWN CENTRE
7.30 p.m.

THE ANSWER
to Drug Addiction
THURSDAY, MARCH 9

Billericay and Wickford
Scouts Local Association
DIAMOND JUBILEE
Black & White Minstrel
Variety CONCERT

AT
Billericay Secondary School
FRIDAY and SATURDAY
FEBRUARY 17th & 18th
7.30 p.m. (Doors Open 7 p.m.)
Admission 3/6 and 2/6 by programme on sale at the door.
Refreshments on sale during interval.

OPEN
ALL
DAY
WEDNESDAY
GAINSBOROUGH
LADIES' HAIR FASHION SALON
To make an appointment
Telephone: BASILDON 22445
today!

Tintette from . . . 2/-
Including Shampoo and Set
Bleach Roots from 25/-
Including Shampoo and Set
SPECIAL OFFER: JAMAL MILK
WAVE PERM. normally £2.12.6.
30/- (no extras) on **TUESDAY,**
WEDNESDAY and THURSDAY
• SHAMPOO and SET 7/6 •
8 SOUTHERNHAY

Wendy's
Caterers
Tel. 74705 34 LEIGH HILL

8 p.m. to 10 p.m.
SATURDAY, FEB. 18th

KOFFEE KLUB
with
THE FORERUNNERS
•
CONGREGATIONAL HALL
(corner of Monypot Lane
and Whitmore Way)

GRAND
JUMBLE SALE
AT THE SCOUT HUT
HOLDEN GARDENS
SATURDAY, FEBRUARY 18
at 3 p.m. • Many Bargains

Damore Nursery
HOLY CROSS CENTRE
NOW OPEN
There are still a few Vacancies
for all day, mornings or after-
noons. Apply: St. Martin's
Church Hall or Holy Cross.

GLASS
Plate and Sheet Glass
Merchants
Glazing Contractors
Mirror Manufacturers
Table Tops and Shelves
Resilvering and Edgework
W. OPPERMAN
AND SONS LIMITED
12 WINSTANLEY WAY
BASILDON, ESSEX
Phone: BASILDON 3350 (2 lines)

Fotorama...
WEDDING
PHOTOGRAPHY
CHILD STUDIES & PASSPORTS
TAKEN IN YOUR OWN HOME
Telephone:
Basildon 21695 N. Benfleet 263

Local
Advertising
is
Local News

Twenty years' experience
in catering ensures that
we make a success of your
reception. We specialise
in outdoor catering
PLEASE WRITE FOR BROCHURES
• TABLE LINEN FOR HIRE •

CLIFFS PAVILION SOUTHBEND
SUNDAY, FEBRUARY 26th at 6.15 & 8.30 p.m.

R. R. PROMOTIONS
present

ON STAGE

Seats at —
18/6 15/- 7/6

GRAND
POP
FESTIVAL

DAVE DEE, DOZY
BEAKY, MICK, TITCH

JIMI HENDRIX
EXPERIENCE

introduced by —
PETER
MURRAY

The famous TV Disc Jockey

— **BOX OFFICE** —
Open 10 a.m. — 8 p.m. Daily

Telephone: SOUTHBEND 47382
BOOK NOW!!

NASHVILLE TEENS
KOOBAS • FORCE FIVE
BOOK NOW! BOOK NOW!!

YO. POP FESTIVAL ADVANCE BOOKING OFFICE, CLIFFS PAVILION
STATION ROAD, WESTCLIFF-ON-SEA For performance 6.15 or 8.30
and before time on Thursday

NAME

ADDRESS

Please send me Tickets at each. Please send
enclosed stamped/addressed envelope, postal order, cheque for



I gather . .

A "STANDARD" REPORTER'S DIARY



SUCH A JOLLY WAY TO LEARN!

Remarkable record

CHILDREN OF three Basildon infants' schools had a wow of a time last week driving model cars round their school halls (see picture above).

It was all part of the County Police's road safety instruction given to the youngsters of Chowdhury, Bardfield and Lee Chapel Infants' Schools.

"We find the cars and the other equipment help us to put over our road safety points much better to the children than just a blackboard talk," said the instructor, Sergt. B. Denton, who was assisted by the local Road Safety Officer, Sergt. T. Milnes.

Later the Police hope to acquire a model ice-cream van to use in the demonstrations in a bid to cut down the accidents caused by children running out into the road to or from ice-cream vans.

Cost of the equipment used by the team? About £200.

Watch out if you're watching!

NEXT week the G.P.O. television detector van carries out its yearly New Town purge—searching for pirate viewers, dodging the £5 licence fee.

Operators can spot the room where the unlicensed set is working, and even which programme is being watched. The vans can operate unseen at some distance from the house.

These annual scares have an amazing success rate. Say the Post Office: "It has been consistently noticed that as soon as people know a TV detector van is in the district there is a rush for licences."

"There have even been queues to buy a licence."

In the vans there are now portable detector sets which can be carried by hand into blocks of flats. Nine vans are used to cover the country. They

travel to each area once a year.

"The aim of the Post Office," said the spokesman, "is to persuade people to take out licences at the proper time rather than prosecute them for not having done so."

Latest returns show that 16,432,184 people in Britain have current broadcasting licences. Of these, nearly 13 million have televisions.

A REMARKABLE record ended when Mr. Jack Moore (64) retired from the position of Secretary at Billericay Silver Band's recent annual meeting.

For Mr. Moore, of Rayleigh Road, Hutton, had been Secretary—with only two short breaks—for 30 years. He is the last of the Band's 25 original founding members.

"I am still on the Committee, but there's a lot of work to the Secretary's job and I thought it was time I had a rest," he told the "Standard" this week.

Mr. Moore joined the Band 40 years ago, when it was known as Billericay Brotherhood Band and played at services at Billericay Con-

gregational Chapel and neighbouring churches.

"I could not even play at the time, but I took up the cornet and learned with the Band," he said. Now he can also play the tenor horn and several other instruments fairly well.

In fact, over the years he has acquired three cornets, a trumpet, a tenor horn,



Mr. J. Moore, 30 years Secretary of the Billericay Silver Band (formerly known as the Billericay Brotherhood Band).

He's in charge of the parks



baritone, brass euphonium, two E flat basses and a tenor cor, most of which are in use with the band.

Mr. Moore's love for music extends to singing. He joined Briggs Motor Bodies, Dagenham, 30 years ago, and sang with their male voice choir for 20 years until they were taken over by Ford's.

He was prevented from joining Ford's famous band by his commitments with the Brotherhood Band. "Ford's band is a really good band and to play with them I would have had to neglect the Brotherhood Band," he explained.

The Brotherhood Band became the Silver Band four years ago, when falling membership threatened them with extinction. Opening the doors to outsiders was a wise move because membership has now risen to 30, which is the strongest it has ever been.

Mr. Moore would like to see even more new members joining, particularly school-children.

Basildon Council's former Parks and Cemeteries Superintendent (Mr. A. Farrington) has been appointed Parks Manager in the Council's new Recreation Department. He is seen above.

Under the new set-up, all parks matters have been transferred from the Engineer and Surveyor's Department to the Recreation Department, which will work under the Town Manager.

In future, Mr. Farrington, as Parks Manager, will deal with all inquiries regarding sports pitches, floral decorations and Playleadership at his present office at Selworthy Nursery, Kennel Lane, Billericay. Later he will be based at the new Council nursery which is being built at Pound Lane, Laindon.

His Assistant Parks Manager at Basildon is Mr. Ivor Rooks, whose appointment was also announced this week.

His ambition fulfilled

BILLERICAY'S first-ever Chinese restaurant—the Golden Crown—is scheduled to open in the High Street on Wednesday.

And for the proprietor, Mr. Robert Yau (27), the opening will be the culmination of nearly 30 years dedicated



Mr. R. Yau, who is opening the Chinese restaurant in Billericay High Street.

toil and self denial to save enough money to realise a like-long ambition to own his own restaurant.

Mr. Yau started work as a kitchen boy in a Hong Kong restaurant, but in 1937 he decided to emigrate to Britain.

"England is the rendezvous of the world," he explained, "and I felt that the chances of setting up a reasonably successful and secure business were greater here than in China."

He has worked in numerous Chinese eating houses in this country, and he gradually worked his way up from kitchen boy, to waiter, to head waiter and finally to manager of a Colchester restaurant.

"Recently I had got enough money to branch out on my own, and Billericay seemed the obvious place," he said. "There are a large number of business men and office workers who would like to eat in Billericay, but they are forced to eat in Basildon because there is no full-time restaurant which can cater for all their needs."

"My place will serve both English and Chinese food. We shall be able to cater for up to 80 people at any one time, and there will also be a bar."

Married, with a three-year-old son, Graham, Mr. Yau lives with his wife, Mrs. Yau (20), in Colchester. But they plan to move to Basildon in the near future.



Head Postmaster Mr. R. Read with Mr. J. Clark (investigating officer), Mr. R. Byfield (technical officer) and driver assistant Mr. P. Tooley pictured around the television detector car.

Council reject plea by Wickford residents

THE PLEA by 25 residents in Castledon Road, Wickford, to have their houses included in the Ramsden Bellhouse sewerage scheme—a plea backed by Billericay M.P. Mr. Eric Moonman—has been turned down by Basildon Council.

The residents made their appeal after hearing that they would not be included in the scheme as it was planned the sewer should stop short of their properties.

They petitioned the Council asking for their part of the road to be included, but their request has been turned down by the Works Committee.

Mr. Moonman has been told by Mr. David H. Taylor (Town Manager) that it was thought that the sewer extension would cost about £10,000. The unit cost would be £400 per property, compared with less than £300 in the main scheme.

CESSPOOLS

Twenty of the 25 properties had cesspools, four had chemical closets and the other a septic tank. Only 16 of the properties, one of which was an old people's rest home, took advantage of the Council's subsidised cesspool emptying service.

In addition to the cost to the Council of the sewer, each householder would be responsible for the cost of the connection to his property.

"Some complaints have been received, but these have been comparatively few," said Mr. Taylor.

A similar letter has been sent to the petitioners, but

adding that the Committee did not think that the circumstances had changed since consideration was given to the matter in June, 1965, when it was decided not to take the sewer past the river in view of the relatively high cost and having regard to the number of properties involved and the unlikely prospect of any future development in that part of Castledon Road.

The Committee were also concerned that now the design work on the main Ramsden Bellhouse scheme had reached an advanced stage, nothing should be done which might delay its commencement.

The letter did, however, give one ray of hope, for it stated: "The Council have, in due course, to review all the outstanding sewerage works in the district and at this time will consider again the extension of the sewer along Castledon Road."

ANOTHER PETITION
Residents of Sugden Avenue, Wickford, also sent a petition to Basildon Council on Friday asking to be included in the Ramsden Bellhouse main drainage scheme.

The petition was organised by Mr. Thomas Stewart (49), a member of the New House Farm Estate Residents' Association, and signed by all 16 residents of Sugden Avenue.

On Tuesday Basildon Town Manager Mr. David H. Taylor acknowledged receipt of the petition and said the Council would investigate the matter.

Pitsea will

Mr. Arthur Percy Ruggles, of Sherwood, London Road, Pitsea, who died on November 25th last, left £6,366 7s. gross, £6,303 ss. net (duty £66).

FOR CLIMBING

A climbing frame is to be given to Basildon Council for Langdon Hills Recreation Ground. The frame is a gift from Langdon Hills Children's Entertainment Committee.

NETHERMAYNE FOOTBRIDGE

WILL NETHERMAYNE get its footbridge after all?

In a dramatic about-face, Basildon Council's Executive Committee on Tuesday overruled the Works Committee decision not to build a bridge. Their recommendation will go before full Council next Thursday.

The Executive's decision followed stinging criticism from Lee Chapel South campaigners and from councillors.

They described the Works Committee proposal for a lights-controlled crossing as "completely inadequate" and accused the councillors of "dicing with people's lives."

Basildon Council's contribution to the cost of an £8,000 footbridge near The Knarves will be about £800. A 1,600 signature petition was handed in at Keay House by Lee Chapel South residents.

SOCIAL CLUB

There were 32 members present at Buttsbury Social Club's weekly meeting in the Primary School. Mrs. Huwes presided and competitions realised 25s. for funds. Arrangements were made for a trip to see the London Players in the comedy "Beside the Sensitive." A demonstration of kitchenware was given by Mrs. Smith. It was decided to donate 25 to the Guide Dogs for the Blind Association.

OUTINGS SELECTED

Voting on destinations for the summer outings took place at Wednesday week's meeting of Billericay O.A.P. Two new members were welcomed and Chairman Mrs. L. Harrington greeted Mrs. Arney, Mrs. Watts and Mr. Herblison on their return from illness. Refreshments, the branch amused themselves playing Bingo.



One of the features of the St. Valentine's Day dance held by the Lee Chapel South Community Association on Tuesday was a fancy dress competition. Costumes ranged from the Invisible Man to a South Seas maiden (who refused to shed her cardigan in Basildon's wintry climate). The bar was run by members of the Association.

Fined after five-vehicle pile-up

A FIVE-VEHICLE pile-up on the Stanford by-pass in November in which a tractor was sent through a hedge and a man was trapped in his vehicle was described to Magistrates at Grays on Friday.

Charged with dangerous and careless driving, Terry Vardon Twigg (22), a shop manager, of Whitmore Way, Basildon, pleaded not guilty to both charges.

Mr. David Madams, prosecuting, said the tractor was travelling towards Southend followed by a pick-up truck and a van.

A Jaguar car driven by Twigg was also travelling towards Southend.

Mr. Madams alleged that Twigg swung out too wide as he overtook the pick-up truck and collided with a heavy lorry coming the other way which

swung his vehicle round so the nearside rear hit the pick-up truck, pushing it into the tractor, which went through a hedge. The lorry went across the road and collided with the van. The driver of the van was trapped in his vehicle for three-quarters of an hour.

The Jaguar finished up on its side—minus a wheel.

Twigg said that he had been in the middle lane until the accident. He saw the lorry coming and noticed the pick-up truck close behind the tractor, so he slowed to allow the truck to overtake.

When it did not he said he was sure the driver

must have seen him so he accelerated to overtake and alleged that when he was too close to do anything the pick-up pulled out.

The Bench dismissed the charge of dangerous driving, but found Twigg guilty of careless driving and fined him £30 with £14 19s. costs.

GUEST SOLOIST

At Tuesday's meeting of Wickford Salvation Army Silver Threads' Club for the Over-60's special guest soloist was Mrs. Bolter, accompanied at the piano by Mr. C. Jones. Birthday greetings were sung for Mr. Waller and a welcome was given to new members Mrs. Morgan, Mrs. S. R. Robinson, Mrs. E. Stone and Miss F. Goodwin. Mrs. D. Gentry and helpers served refreshments.

MORE BIG BARGAINS AT

FINE FARE

TOWN SQUARE

BASILDON

THESE OFFERS (EXCLUDING MEAT) ARE AVAILABLE UNTIL SATURDAY 18th FEBRUARY ONLY

USUALLY NOW

USUALLY NOW

GOLDEN SHRED MARMALADE

ROBERTSONS

1/10½ 1/4½

SLICED PEACHES

1/8 1/4

FINE FARE CREAMED RICE MILK PUDDING

VALUE

1/1 9d

FRUIT SALAD

1/8 1/4½

STORK MARGARINE, PER LB

2½

1/7

CANNED TOMATOES

1/3 110d

FINE FARE CREAM, 6 oz SIZE

VALUE

1/2 9½d

HEINZ BABY FOODS

8½d 6½d

NESCAFE INSTANT COFFEE 4 oz SIZE

5/4

4/3

GIANT PERSIL

3/4 2/9½

JACOBS CREAM CRACKERS

1/1

9½d

KIT-E-KAT

8½d 6½d

SUNCRUSH ORANGE OR LEMON

3½

1/11½

OZO TWIN PACK TOILET ROLLS

2/4

1/2½

FINE FARE
PURE DAIRY
BUTTER
PER LB

ONLY
2/10

BROOKE BOND
P.G. TIPS
TEA
19 PER QTR

NOW
1/4

FINE FARE
LARD
VALUE 1/6 LB

NOW
1/2

SUPERB QUALITY
NEW ZEALAND LAMB

LEGS

ONLY PER LB 4/2

SHOULDERS

ONLY PER LB 2/8

CHOPS TABLE TRIMMED

ONLY PER LB 4/2

STEWING LAMB

ONLY PER LB 1/8

FACTORY GOSSIP



Their successful big selling point

DELIGHTED BY THE NEWS THAT HIS SECTIONAL BUILDING FIRM HAVE WON AN £8,500 CONTRACT FROM BRITISH RAIL (WESTERN REGION) IS MR. LIONEL WERNICK, MANAGING DIRECTOR OF S. WERNICK AND SONS, LTD., OF CHARITY CHASE, BILLERICAY.

"It's not that we have not had work from British Rail in the past, because they have been customers of ours for 30 years," he explained last week. "But most of our past work has been through an open-ended contract for line offices all over the country; now we are receiving many more orders and the latest is typical."

It is for four buildings to house control and administration staff in a new freight liner depot at Cardiff, which British Rail want delivered three weeks after ordering and completed one month after delivery.

Wernick's ability to meet this quick delivery and completion demand—through S. Wernick and Sons (Contracts), Ltd., a subsidiary formed last year—was one of the factors which won them the contract.

It has been Wernick's big selling point for years. Just before Christmas they built a £25,000 two-storey office block for Swan-Hunter, the Newcastle shipbuilders, in three weeks.

"It was completed absolutely on schedule and Swan-Hunter were so pleased they immediately ordered an

extension, which we are tackling now," said Mr. Wernick.

Future work includes building a pathological laboratory for a hospital in the East Riding of Yorkshire, a complex of specially-designed shops and recreational rooms for mentally defective hospital patients in Surrey and a series of dining halls and kitchens for the City of Portsmouth school meals service.

For the first time Wernick's are also going into the "traditional" building business. "We have built semi-timber buildings for a long time, but we have now taken an order, with the possibility of more to follow, for 36 holiday chalets at Polperro in Cornwall.

The timber components will be built here, of course, but they will be 100 per cent in the 'traditional' build-

ing style," said Mr. Wernick.

When the buildings are completed, at Whitsun, they will form the fifth site for Wernick - built holiday chalets in this country and the firm have also built 48 mountain chalets in the Ardennes in Belgium.

Our picture above shows their Transport Manager, Mr. Bob Wren (55), of Mountnassing Road, Billericay, checking consignment notes with driver Mr. Ron Baines (29), of Sebert Close, Billericay, shortly before he took a "domestic" load to Wales.

Married, with two sons and four grandchildren, Mr. Wren is the firm's longest-serving employee. He has been with them 14 years and holds their 10 years' service gold watch.

History made at S.T.C.

SOME of Basildon's top boffins gathered at the Standard Telephone factory to listen to Mr. Alec Harley Reeves, a man whose name will go down in the history books of telecommunications.

His name may not yet mean much to the man in the street. But Mr. Reeves was the inventor of pulse-code modulation, the system which enables the capacity of existing telephone cables to be multiplied by twelve and should save post office

throughout the world millions of pounds.

Mr. Reeves was also making minor history when he visited Basildon. He was the first guest speaker to the newly-formed S.T.C. (Basildon) Engineering Society.

"It was a very good meeting indeed. A very technical discussion," said the Society's Assistant Secretary, Mr. Kenneth Willis.

About 170 people attended the meeting.

"We were delighted with the response," said Mr. Willis. "We can now expect our membership to grow considerably. It has already reached the 150 mark and, now that we have created the initial interest with a well-known speaker, things should develop fast. The level of discussion was very high. The audience were well above average intellect, of course."

The Society, which functions outside the firm, and their Social Club is open to any S.T.C. worker, but guests are welcome at meetings.

Hard work — success

STANDARD Telephones Transmission Group held their first Basildon apprentice prize-giving last week, when seven apprentices completed their five-year term.

Congratulating the boys on their work, Executive Director Mr. J. Ayres said few people realised how hard boys had to work for their certificates. "It makes me very proud to see our faith in them has been justified."

Special prizes went to Ian Lowe, academic apprentice of the year, and to David Geddes, industrial apprentice of the year. For David there was a book and for Ian a briefcase.

Other apprentices coming out were A. S. Fell, M. Bowles, J. H. Hassel, A. J. Harbinson and D. C. Katz.

For the door



WITH THE annual outbreak of spring-cleaning fever due very shortly, hoping to cash in on it are Henry J. Peters, Ltd., the marketing outlet for hardware and related products manufactured by the W. W. Ball and Sons, Ltd. Group of Companies, Kennel Lane, Billericay.

Big order from big factory

MAYWICK Appliances, Ltd., of Wickford, have carried out a mammoth propane gas-fired radiant heating installation at the Corby, Northants, premises of Stewarts and Lloyds, Ltd., one of Europe's largest integrated iron, steel and tube works.

Over 300 heaters are fitted in a variety of buildings, including the mills, main engineering shop and other engineering shops. In the sitting mill alone there are 56 heaters mounted on the structural work of the building, producing 31 million B.T.U.s per hour.

Maywick's Press Officer, Mr. J. Sargent, told the "Standard": "The choice of our radiant heaters was made largely because the buildings concerned have high roofs and, in some cases, areas where heat is not necessary. The radiants have been carefully sited to direct the warmth exactly where it is required and no heat is wasted in the roof or in areas with no personnel."

Within a few weeks hard-wire shops throughout the country will be selling the latest addition to their range of products—a compression-moulded suite of door furniture designed by one of the country's leading industrial designers, Don Tustin, M.S.I.A.

Made from urea formaldehyde and phenolic formaldehyde, it consists of lever and knob handles, cabinet handles and an escutcheon, the main feature of which is "dust freedom". Henry J. Peters' Sales Manager, Mr. Joe Wilkins, told the "Standard": "The whole suite has been designed with the housewife in mind. As well as being attractive, hard-wearing and competitively priced, it is extremely easy to clean."

The suite is being manufactured in five colours, black, brown, white, grey and ivory, and, said Mr. Wilkins: "We believe these will provide the decorator with a choice to meet the requirements of almost any colour scheme." A suite is shown in our picture above held by Miss Marilyn Bradfield (19), one of the senior employees in the sales office. A resident of Bereham Court, Laindon, she has been with the firm for over three years.



BEHIND THE SCENES MANY POST OFFICES RESEMBLE AIRCRAFT HANGARS EQUIPPED WITH ANCIENT-LOOKING BENCHES AND WIRE RACKS. ONLY THE POSTAL CHARGES SEEM TO HAVE CHANGED SINCE VICTORIAN DAYS.

But not all post offices fit the description. The mechanical age is gaining on them, thanks to firms like Teleflex.

Conveyors are playing an increasing part in sorting Britain's mail (see picture above). Latest Teleflex installation to be completed is at Redhill, where the £65,000 system is already handling up to 40,000 parcels a day, picking up mail direct from a station platform.

Electronic controls have been fitted and the new sorting office is also equipped with Teleflex remote control window gear. Codings ensure that each bag is deposited at the right corner of the building.

Orders have also been received for similar installations at Reading and Sheffield.



Mr. Alec Harley Reeves was the guest speaker at the first meeting of S.T.C. (Basildon) Engineering Society on Thursday week.

TEACHER WHO GAVE BOY THE SLIPPER WAS ASSAULTED BY STEPFATHER

AFTER A BOY had been given the slipper by a Laindon teacher, his stepfather hit the teacher in the face, saying: "That will teach you to slipper my boy."

John Underwood, of Victoria Road, Laindon, pleaded guilty at Billericay on Tuesday to assaulting the P.E. teacher, Mr. William Langlois.

He was fined £5 and ordered to pay five guineas costs.

"Teachers have got to be protected," said the Chairman, Mr. H. R. Dunne. To have teachers assaulted by parents every time they tried to instil a little discipline would not be tolerated.

"I can only hope parents will realise that teachers are acting on their behalf when they have children under their jurisdiction and trying not only to educate young people, but also to see they discipline themselves," he said.

For parents to interfere every time their children had been reprimanded with or received one or two from a cane or slipper was hardly likely to bring about a nation of virile young men, in spite of what the psychologists said at the moment.

Insisted on "Sir"

Prosecuting, Mr. J. Pollard said that it was the custom of Mr. Langlois to call out their times to boys who had been on a cross-country run.

Later, in the changing room, they called out their times to him.

Mr. Langlois insisted they called him "Sir," and after admonishing three of the boys for failing to do so, he called them out and gave them one each with a slipper.

The following morning, said Mr. Pollard, Mr. Langlois was bending down getting his P.E. kit from his car when, standing up and turning round, he was hit in the face by Underdown, who said, "That will teach you to slipper my boy."

For Underdown, Mr. Rhys Jones said that the boy went home crying and was found to have a

red bruise on the base of his spine. His stepfather had thought the teacher was taking rather more on himself than he should have done. He was now quite satisfied the teacher acted properly.

Knocked a cyclist off his bike

ARTHUR GALE, of Arnolds Close, Shenfield, admitted at Billericay on Tuesday careless driving at the junction of Honeywood Road and Paycocke Road, Basildon.

A driver for 14 years without previous accident, Gale was fined £5 with two guineas costs.

Mr. Malcolm Simons, prosecuting, said Gale's car knocked a pedal cyclist from his machine.

He said he did not see the cyclist when he started pulling out of the junction. When he did see him he stopped "a little too late."

WANT TO BORROW £317,177

BASILDON Council Finance Committee have authorised the Town Manager to apply to the Minister of Housing for his consent to borrow £317,177.

The money is for a number of schemes, including £24,040 for Perry Street, Billericay improvement; £150,260 for Ramsden Bellhouse sewerage; and £3,200 for relief sewer work at High Street and The Broadway, Wickford.

MANOR WAS OWNED BY A KING'S SON

SURROUNDED BY East Thorpe, Clickett Hill and Rayside in the New Town is a dry moat, which until a few years ago was still filled with water. This relic from the days when moats were a defence against marauding Danes and wild beasts is the last link with the manor of Little Barstable or Basildon Hall.

In the Middle Ages knights had to be found to guard castles, but later this service was commuted for a money payment. This manor had to pay rent in lieu of castle guard at Rockstead Castle on the Medway in Kent.

The Domesday Survey (1086) records that Barstable of Odo, Bishop of Bayeux, under a son of Edward I, Edmund of Woodstock, Earl of Kent, who was beheaded in 1330, and from 1339 to 1419 it belonged to the Walden family.

William Sandell, who died in 1563, possessed Little Barstable Manor which was declared to be worth £20 a year. He was held of Anthony Walden. The Sandells held the manor until 1603, when John Lake, of North Benfleet, who had married Elizabeth Sandell in 1591, it was then occupied by Hugh Nevill, John Lake left Little Barstable or Basildon Hall to his wife for life. His son sold the manor to Richard

by
J. K. PAYNE

Chester, of Leish, in June, 1622. In the 18th Century the Jerry family lived there. The baptisms of seven of their children are recorded in Basildon registers. One was a private baptism.

Irish labourers came to do harvest work, etc. in the 18th Century, and one, John Carter, died at Basildon Hall on 1770.

In 1811 John Woodard lived at Basildon Hall and his fifth son, Nathaniel, was born there that year. He was educated privately and after being to Oxford was ordained. He was concerned in the lack of good schools for the middle classes and thought of public school education on Church lines. As a result of his work a society was founded to bring his ideas into being. Schools were founded, Lancing College, near Shoreham, Sussex, being one of them, and he is buried in its beautiful chapel.

Taking over teacher vacancies adverts?

BASILDON Education Committee want to take over all advertising for teacher staff vacancies from the County Council.

At the moment the County handle the adverts for teacher vacancies whereas Basildon deal with all other vacancies.

To fit in with the new suggested procedure, Basildon are asking the County Education Committee to make an appropriate allocation of money in the estimates.

HOLIDAY SLIDES

Several visitors were welcomed at Shotgate Women's Institute's February meeting when the main feature was a show of coloured slides by Mr. C. Pleton, describing his holiday in France with his wife last summer. There were a number of interesting entries for the competition — a scrapbook competition — which was won by Mrs. V. Lovett.

TORIES' CHOICE

WICKFORD Tories have selected two of their prospective candidates for the Urban Council elections in May.

They are managing director of a local firm of electronics engineers Mr. Cyril Alfred Cook (48) of Curlew Crescent, Basildon, and Mr. Peter Bracken (46), a steel stockist's area manager, of Oak Road, Crays Hill.

SCHOOL ROBBED

THREE SILVER cups, two starting pistols and a stopwatch were stolen from Langdon Hills Primary School on Thursday week.

One of the cups was recovered the following morning near the playground and the other two were found on a derelict plot near to the school on Sunday.

The largest selection of
★ CARPETS ★
in the area

SEE THE PATTERNS OF YOUR CHOICE IN YOUR HOME!
Expert staff always available to advise, measure and estimate

A.O Axminster Usually . . . 94/6 sq. yd. OUR PRICE 78/6 sq. yd. SAVE 15/- sq. yd.	A.1 Axminster Usually . . . 69/6 sq. yd. OUR PRICE 59/6 sq. yd. SAVE 10/- sq. yd.
Bronze Label Kosset Usually . . . 59/6 sq. yd. OUR PRICE 50/6 sq. yd. SAVE 9/- sq. yd.	555 Nylon Velmar Usually . . . 59/6 sq. yd. OUR PRICE 50/6 sq. yd. SAVE 9/- sq. yd.

SPECIAL OFFER . . . due to huge purchase of
FACTORY REMNANTS. Top quality. **30/-**
Sculptured design. All sizes sq. yd.
ALSO TUFTED CARPET FOR BEDROOMS AND
ELSEWHERE at 14/11, 22/6, 25/-, 30/- per sq. yd.
TELEPHONE FOR ESTIMATE ON ANY CARPET
— OUR VANS DELIVER EACH DAY —

A. L. HARRISON
CARPET SPECIALISTS LIMITED
23 HIGH STREET, BILLERICAY Phone: Billericay 2574

GO FOR A NEW GAS COOKER



-You could win it free!

and get £2 trade-in for your old gas cooker

THREE LUCKY WINNERS EVERY WEEK—AND ONE OF THEM COULD BE YOU.

The new gas cooker you go in for right now is your entry form to a marvellously easy competition. First prize? Your money back! Over 150 consolation prizes, too, of The Bon Vivour Cook's Book by TV-famed Fanny Cradock. More details at your gas showrooms now. And hurry—this exciting competition is open for a limited period only!

TODAY'S COOKERS HAVE TOMORROW IN MIND

The new High Speed gas cookers sparkle with new ideas. Such as burners that light themselves when you turn the tap. Fully automatic 'set-it-and-forget-it' ovens. Rotary spits. Drop-down glass doors. New fast eye-level grills. Easy adaptability to natural gas when the time comes . . . at no cost to you. And quick, easy-clean design. Best of all, High Speed Gas gives you the clean blue flame that obeys you—instantly. And there's no purchase tax, no change in easy H.P. terms—still only 10% deposit and 15 quarterly payments! Your old gas cooker can give you an extra saving. Remember the £2 trade in!

This 9-piece luxury Bakeware set Value £4.0.6*—free!

What a marvellous money-saving offer! Britain's largest manufacturers of housewares makes this top quality, rustless aluminium bakeware set that never needs scouring, bakes with or without fat and actually helps cut baking times. And it's yours absolutely free—if you choose the Main White Rose, Main Mayflower, New World 51, Flavel Querry 4, Parkinson Prince 2 with Magitrol or the Newhome Caravel.



Flavel Querry 4 Automatic £57.19 fixed to adjacent point.



Main White Rose £48.59 fixed to adjacent point.



*Manufacturer's recommended price

Swing to High-Speed action now—These Easter Offers for a limited period only!

NORTH THAMES, EASTERN AND SOUTH EASTERN GAS showrooms or authorised dealers

Billericay band festival suggestion

BILLERICAY SILVER Band's Musical Director, Mr. J. A. Nicholls, stressed the need for practice nights twice a week if they were to maintain their position in the contest field at the band's annual meeting in the Co-operative Hall last week.

He felt an approach should be made to the County Education Committee for accommodation facilities at a local school under the further education service.

This could be done as they had young people in the band who joined on leaving school.

Facilities for practice and also a grant under further education were being provided elsewhere in Essex, he added.

Mr. Nicholls also suggested a band festival, with well-known bands taking part in Billericay. The committee will talk it over.

Mr. A. Smith, Treasurer, said there was a balance of £40 15s. 11d. Receipts from carnivals, fetes and marches were well up on the previous year.

Total expenditure was £212 9s. 8d. and he pointed out if proceeds from bazaars, carol singing and concerts had been as high as in 1965, income would have been far more than £252 17s. 7d.

Mr. J. Moore (Secretary) in his report said he had had a hard year because there had been such a lot of changes among players. There were times when he had not known how many they were going to see for their various engagements.

But it had been a successful year. With the enthusiasm shown by their musical director they could be one of the best bands in Essex. They were and always had been a happy band.

Officers elected: Bandmaster, Mr. G. Little; Secretary, Mr. B. Caudle; Treasurer, Mr. K. Mercer; Librarian, Mr. G. White; Committee, Messrs. J. and L. Moore, L. Troke, C. Quarterman, A. Smith and A. Buttle and Miss Susan Moore.

LETTER TO EDITOR

"Unorthodox religions"

SO THERE is an agreement between the Basildon Christian Council and the Development Corporation not to allow church sites to Jehovah's Witnesses without the Council's knowledge (and approval). This discrimination is highly improper and certainly not in harmony with the principles one expects from the "Christian" Council in Basildon.

What are they afraid of, anyway? That their attendances might dwindle even further if the "masses" have a meeting place near any of their churches? Perhaps they are envious of the large congregations, the warm Christian spirit which prevails in them. The excellent Bible instruction given and the exemplary behaviour of the very high proportion of young people who attend?

There seem to be great advantages in NOT belonging to the "orthodox" Church, with their dead creeds, dogmas and emphasis on their own social activities. If results are anything to go by and if one wants a real hope for lasting happiness based on God's Word, which they so often reject! R. JUDGE, 7, Granville Road, Runwell.

METHODIST PREACHER

Sunday preachers at Wickford Methodist Church this week were Mr. B. Pollard, of Wickford, in the morning, and Mr. A. Chapple, of Hadleigh, in the evening.

They are still carrying on

IN CONNECTION with our feature last week on "The resurgence of Laindon" we have been asked to point out that Doris' Hairdressers are still carrying on business at 27, High Road, Laindon.

Left friend his violin

MR. ROBERT George Thomas Carrodus, who died in December, aged 36, left his "second violin" to his friend and pupil, Mr. George Silvertown, of Mill Road, Billericay.

Leading violinist for Sir John Barbirolli, Mr. Carrodus had played with the Covent Garden and British National Opera Company and London Symphony Orchestra, and at the Proms during the war.

Mr. Carrodus lived at Imperial Avenue, Westcliff. He left £4,105 15s. gross, £4,030 15s. net. With his second violin by William Beare, he also left his best bow and oak double music stand to Mr. Silvertown.

NEW ROAD

Approval in principle has been given by Basildon Council Housing Committee Chairman to proposals for a new access road from School Road, Billericay, to the County Secondary School.

Wickford field-day at Cruft's

WICKFORD DOG breeders had a field day at the world famous Cruft's dog show in London last week.

Among the local prizewinners were Mr. and Mrs. P. W. Howell, of Fourth Avenue, Shotgate, whose eight-months-old beagle bitch, 'Howboro' Heather', won Reserve Place in her class.

First time out in the ring, 'Howboro' Heather' qualified for Cruft's by winning third prize in her class at the Richmond Championship Show in December, and since then she has won another five prizes at local shows.

Mrs. W. P. Birkin, of Southend Road, won three prizes with her miniature bull terrier, 'Chika Highlight'. 'Chika Highlight' was placed second in the Novice Class, second in the Graduate Class and Reserve in the Open Bitch Class.

Mrs. Birkin's daughter, Shirley, also took her griffon, 'Anita of Antee', along. It was awarded second prize in the Novice Class only 12 weeks after giving birth to a litter of puppies.

Finally, 22-months-old golden retriever 'Janacree Shelley' made sure of a third prize for her owner, Mrs. A. Wood, of South Beach Avenue, in the Undergraduate Bitch Class.

'Janacree Shelley' also qualified for Cruft's at the Richmond Championship Show when she won third prize in her class.

Opening Monday, 27th Feb.

金冠酒樓

The Golden Crown

CHINESE RESTAURANT

(Fully Licensed)

ENGLISH & CHINESE DISHES
Parties Catered For

SPECIAL

3-COURSE LUNCH

Open MONDAY to SATURDAY
12 noon to 11.30 p.m.

SUNDAY 12.30 p.m. to 11 p.m.

MONDAY to FRIDAY

5'.

5 HIGH STREET, BILLERICAY

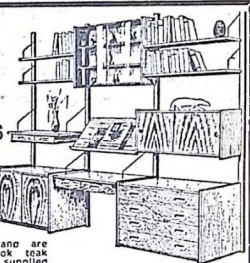
Tel. 488

UNBEATABLE VALUE!

DANISH

PS WALL
system UNITS

Danish ps System Wall Units — imported by us and sold to you at 33% less than any other comparable system! Attached to the wall above the floor with no ugly ladders to dust these units are attractive yet extremely strong and are finished in beautiful Bangkok teak veneers. They can also be supplied in rose-wood or oak at extra cost to order.



ANTONET
102 THE BROADWAY, LEIGH-ON-SEA

LEIGH-ON-SEA
LIMITED

Telephone:
Southend 76771

"RESIGN" DEMAND BY BASILDON'S M.P.

Basildon M.P. Mr. Eric Moonman this week challenged Mr. Niall Macdiarmid to resign as Deputy Chairman of the Government's Organising Committee for the Steel Industry. The challenge followed the steel boss's attack on the public ownership of steel.

"If he hasn't the time or the interest in the new organisation, then he should take the honourable way out and depart from the Committee," said Mr. Moonman. "If he fails to do that the Minister of Power must act with courage and firmness."

Mr. Moonman has tabled a question for the Minister. He asks: "What job description was presented to the Deputy Chairman of the Government's Organising Committee for the Steel Industry on his appointment; and what was the collective brief given to the Committee?" He has supported the motion calling on Mr. Macdiarmid to resign as Deputy Chairman.

TORIES LOOK BACK AT EASY WINS

THE ORGANISATION of Wickford Conservative Association was praised at the annual meeting last week. Success last year—and in the by-election following the resignation of Miss Maureen Gibson—proved this.

But their Chairman, County Councillor F. H. Hodgson, issued a warning. Conservative voters in Wickford would not always turn out to "provide victory on a plate," he said.

Alterations to ward boundaries and the consequent increase in representation from five councillors to eight would mean at least double the number of helpers would be needed to sustain the organisation and keep it up to date.

County Coun. Hodgson added he was confident, however, that members needed for the Urban Council elections and also for the County Council elections, in which he would provide the support

would be seeking re-election in May.

Members' enthusiasm last May resulted in more votes being cast for a single Conservative councillor in the ward than on any previous occasion, he said.

Constituency Agent Mr. Dirk Vetterwinkel congratulated the Association on their tremendous efforts, and a tribute was paid to Mr. Ken Kerslake, who resigned after four years as Secretary.

Officers elected were: Chairman, County Councillor F. H. Hodgson; Vice-Chairman, Mr. A. Batchelor; Secretary, Mrs. Grace Mairs; and Treasurer, Mr. Ted Bird.

All the Committee were re-elected.

1-4

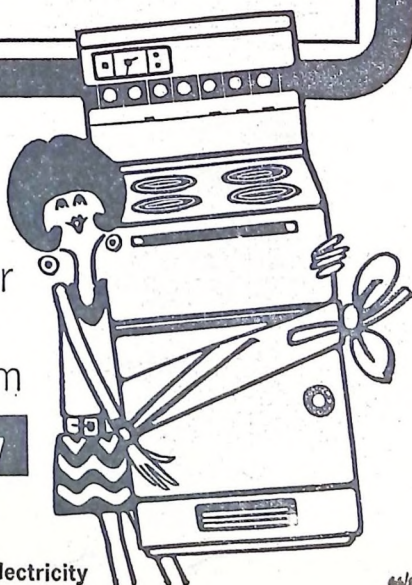
for your old
Electric cooker

in part exchange for
a new 1967 model
Electric Cooker from

Eastern Electricity

BUY BEFORE FEB 28

Cooking is cleaner with clean electricity



CHILDREN'S PAGE

COLLEEN RECRUITED 44 HAPPY PALS



ONE OF our busiest Happy Pals has been on a recruiting spree! She is Colleen Gourley, who lives at Moss Close, Vange, and she has recruited no less than 44 new Happy Pals! She is seen above.

As I told you in our Secret Message last week, I was on a short holiday.

The first thing I found on my desk when I got back was Colleen's "bumper bundle" waiting to be dealt with.

It took me two hours to look them all in, Colleen and I really had writer's cramp at the end of it! But it was a wonderful effort and must have taken you a long time.

Included in Colleen's long list were two more sets of twins. We are doing well for twins just lately, aren't we? I know you will all join with me in saying a hearty "welcome" to all the newcomers.

As you can imagine, our membership is going up by leaps and bounds and we are rapidly approaching the 600 mark. So do keep the enrolment forms coming in. As you know, there is always a special prize for the member who makes a "hundred" number. And, of course, when we reach No. 1,000 we shall have to think of something really super!

Next week we celebrate our first birthday and I would like very much to report to our Editor that we have 600 members on that day.

So, if you are not already a member of the League, or you have friends who are not members, just fill in the membership form on this page and let me have it early. Remember, there's a special prize for the 600th member.

We are judging the birthday party colouring

competition and we will announce the winners next week.

Love, from
AUNTIE LIZ

DUSTY!

Dust is comprised of tiny particles of matter, which travel through the air and settle everywhere - including the furniture! Volcanoes throw out masses of dust, and this and various other kinds of dust, circulate in the upper atmosphere and cause the blue colour in the sky, the red and golden sunsets, and to a large extent, the twilight.

DID YOU KNOW?

The horn of an animal, such as a cow, buffalo, ram, etc., is hollow, and one can make a musical instrument from it, on which a loud note can be blown. The noise is also given to a brass instrument in an orchestra, the French horn. A little metal trumpet gives a high note; a metal trumpet, ten feet long give a low note. As it is not convenient to use a straight trumpet ten feet long, it is coiled into the characteristic shape of the French horn. By the use of stops and other arrangements, all the required notes can be played, but this complicated orchestral instrument still has the same name as the primitive native one, made from an animal's horn.



Here are some very happy little people we met at the Mother and Babies' Club on Monday at Fryers Community Centre, Basildon. They stopped a jolly game to pose for a picture.

DUMBELLE...

by Bernard Richardson



MANY HAPPY RETURNS

A VERY HAPPY BIRTHDAY THIS WEEK TO THE FOLLOWING HAPPY PALS:

Denva Harris, of Threshelford, Basildon, 11 on February 17th, and Shaun Spooner, of Burnt Hills Road, Basildon, who is 7 on the same day; Maureen Slatery, of Furlongs, Basildon (9), and Kenneth Wiseman, of Elmtree Road, Pitsea (8), both on the 18th.

Christine Mavis Peek, of Danbury Down, Basildon (12), and Gillian White, of Attridge Chase, Billericay (9) both on the 19th; Andrew McLaughlin, of Bourne Avenue, Landon, 3 on the 21st.

David James Newman, of Vange Hill Drive, Basildon, 6 on the 22nd, and Robert Barnett, of Waddingfield, Basildon, 11 on the 23rd.

Many happy returns of the day to you all.
AUNTIE LIZ.

LEAGUE MEMBERS ON THE OTHER SIDE OF WORLD

WE HAVE SOME MORE NEWS FROM OUR HAPPY PALS DOWN UNDER, GORDON AND SUSAN WELLS. THEY HAVE SENT ME A VERY PRETTY PICTURE POSTCARD OF A PARK THEY VISITED WITH THEIR PARENTS, CALLED YANCHEP PARK, AND IT SHOWS A MOST BEAUTIFUL LAKE, WITH SWANS AND A WEeping WILLOW TREE; A CLOSE-UP OF A KANGAROO, JUST READY TO LEAP; TWO GORGEOUS CUDDLY KOALA BEARS CLINGING TO A TREE, AND THE MOST WONDERFUL CAVE, WITH STALACTITES AND STALAGMITES IN BRILLIANT COLOURS, CALLED, VERY APPROPRIATELY, THE "JEWELL CAVE" (THAT IS HOW THEY HAVE SPOKE IT).

Gordon says they went on the lake in a boat and that although they took a picnic dinner the flies were such a nuisance they could not eat it all.

Poor Gordon has broken his arm. He spent a week in hospital, and says it was so hot that they slept out of doors, under nets (to keep the insects away from them, I expect). Of course, Australia is in the middle of summer at present.

We are all very sorry to hear about your accident, Gordon, and we hope that you will soon be quite fit again. It must be a terrible nuisance to have one arm in a sling. It was lovely to hear from you, and I know the Happy Pals here like to hear about life in Australia.

Love, from **AUNTIE LIZ.**

SECRET MESSAGE

NIT DVFZ SVGJFPBFJ
OVWEK EBE ZIQ ADP

Beavers are so clever

A beaver is an animal about two feet long, with webbed hind feet, and a flat tail, which helps it to swim. Beavers used to be found in Great Britain, but are now found in large numbers only in North America. Beavers usually live together in colonies: they build a "lodge" by burrowing into the earth on the bank of a river, and dig out a cavity, or "room."

'Standard' Happy Pals League

ENROLMENT FORM

YOUR FULL NAME _____

YOUR ADDRESS _____

DATE OF BIRTH _____

Please send this form to "Auntie Liz",
"Standard" Office, 10 Southernhay,
Basildon.

COMPLAINT TO M.P.

Social Security Office said to be "chaotic"

COMPLAINTS that the Ministry of Social Security Office at Chestnut Road, Pitsea, lacks privacy and is short-staffed are being investigated by Basildon's M.P. Mr. Eric Moonman.

"The organisation is absolutely chaotic," said Mr. Eric Hawthorne (34), milkman, of Brownlow Bend, Basildon. "I have seen the manager and told him what I will do."

Mr. Hawthorne said he had received another person's cheque through the post and that he is now sorting out an over-payment matter with the manager.

He added that only one woman dealt with the people—from all parts of the urban district—and often there was a long queue at the office.

Mr. Hawthorne went to the office with prospective Labour candidate Mr. George Elder, who is standing in the May elections. He is supporting the complaint and told a reporter there was no privacy at the office. There is only one cubicle and this is not soundproof.

When he was in the office, Mr. Elder continued, he heard a woman at the counter telling the cashier that her husband had left her.

"I am not blaming the cashier for the organisation," said Mr. Elder. "She is doing the best she can—in fact, she is doing a very good job."

It was the organisation he criticised. About the location of the office he added: "It should be in the New Town itself. Some people have to take three buses to reach Pitsea."

Mr. Hawthorne suggested the main office for the area should be moved to the Town Centre and Pitsea kept on as a sub-office.

The manager of the Pitsea office has written to Mr. Moonman replying to the problem of delays in payment over the counter between noon and 2 o'clock.

"Claimants who, for special reasons, require payment of benefit over the counter, are advised to call before noon or after 2 p.m. in order to obviate any unavoidable delay." Commented Mr. Moonman: "It is plainly most unsatisfactory and does not meet the basic difficulties."

Normal procedure

Mr. L. Lang, manager of the office, explained the

position to a reporter. He emphasised that the normal procedure was to pay benefit through the post and that only one person was needed on the counter.

"Payment at the counter disrupts the normal flow of work in the office," he pointed out. "Four people have to be involved in the operation. This is why the Ministry do not encourage payment at the counter."

He added that having one person on the counter was normal in Ministry offices. She could cope quite well and the numbers coming in were usually spread evenly through the week.

However, he agreed the office had been understrength. "We had a lot of sickness among the staff. But the position is improving."

On the question of privacy, Mr. Lang said his office had a separate interview room whereas in some offices the only private section was partitioned off.



Basildon Home Safety Committee held a social evening at Fodderwick on Monday. Pictured are the Chairman of the Council (Coun. A. Baron Burn), Mrs. Burn, Station Officer Thompson (of Basildon Fire Station), Coun. Desmond Savage (Chairman of Home Safety Committee), Mr. Stead and Mr. A. J. Swann (of the North Thames Gas Board).

BUTTSBURY RANGER GETS DUKE'S GOLD AWARD

BUTTSBURY RANGER 19-years-old Margaret Cheyney was presented with the Duke of Edinburgh's Gold Award by Basildon Council Chairman Coun. A. Baron Burn, J.P., on Saturday. She is a member of 1st Buttsbury Company of Billericay Division Girl Guides.

It was also a special occasion for the new Division, as the ceremony took place at their first large-scale public event—an exhibition of Guide and Brownie activities in the W.I. Hall.

The exhibition included all aspects of work and there was also a "Memory Lane" corner for the Trefoil Guild.

To show the world-wide scope of the movement four girls wore uniforms from America, Belgium, Greece and Korea.

The W.I. judged the divisional heat of the County competition, which was based on the Home-maker's badge. Winners were 1st Buttsbury, with 1st Chantry second and 2nd Chantry 3rd.

The winners' award, the Percy Fisher Memorial Cup, was presented by Mrs. Burn.

After presenting the Duke of Edinburgh's Gold Award to Ranger Cheyney, who has been in the Guide movement for 11 years and is at present training in domestic science at Redbuck College, Shrewsbury, Coun. Burn congratulated her and said that in doing so he also congratulated the people behind her—her parents—who, he was sure, had encouraged her to gain the award. "I am certain if they had not been there to back you up you would not have got it quite so easily," he said.

He said children would only get the best out of the Guide movement with parents' support.

Mrs. D. Fisher, Divisional President, and donor of the Memorial Cup, spoke of the very high standard set by the companies.

Mrs. C. H. Wilkinson, Divisional Commissioner, said they had been lucky in launching the new Division because Guiding was taking a step forward and they were trying to move a little bit with the times.

A bouquet was presented to Mrs. Burn by Susan Campbell (10), a Brownie of 1st Buttsbury.

Palaeolithic to bronze

NEXT SESSION in September, Wickford branch of the Workers' Educational Association hope to hold 24-week courses in history and also the archaeology of Palaeolithic times through to the Bronze Age.

"If there is sufficient demand for classes in other subjects we shall endeavour to organise these," said Miss Betty Watts, branch Secretary, this week.

WROTE COUNCIL FOUR MONTHS AGO—STILL NO REPLY!

SUNNYMEDE Committee of Billericay Residents' Association, who wrote asking Basildon Council to consider providing a children's recreation ground in their area, are still waiting for a reply—four months later.

"This is an urgent need, but so far it has prompted a far from urgent response from the Council," said Committee Chairman Mr. Roger Longdon when the delay was discussed at their annual meeting at Sunnymede County Junior School on Tuesday.

The Committee wrote in October asking for the recreation ground in view of the "substantial development" taking place on the Valley Wood, Metropolitan and Morrell-Ixworth housing estates.

They also told the Council of an "ideal" site for recreational purposes, with space for swings and playing area.

"We must ask the Council for a reply," newly-elected Secretary Mrs. Jean Henning told the meeting.

A mother of twins aged three and two other children of six and nine, she revealed that she only joined the Association in the first place because there was nowhere for children to play but the streets. "Our children's lives are in danger and it is just not good enough," she said.

It was agreed that the Committee should consider what action to take next at their first meeting.

Blanket started fire

An electric blanket started a fire in the bedroom of a house at Mapleford, Wep, Vange, on Thursday. Basildon Firemen went to it. Tenant of the house is Mr. W. Cook.

FOR TURNING

Eighty-three square yards of land are to be acquired by Basildon Council for a turning 1200 ft. in Oak Road, Billericay

Four men in hospital

FOUR MEN were taken to Orsett Hospital after their car had overturned at the Five Bells roundabout, Vange, on Saturday.

The driver, Mark O'Donnell, of London, S.E.1, and a passenger named Marsh were both detained in hospital with head injuries.

LET 'CHANNEL' JET YOU TO THE SUN FROM SOUTHEND AIRPORT

MEDITERRANEAN HOLIDAYS by JET

Have fun in the Mediterranean sun—and start it with a jet flight from your own local SOUTHIEND AIRPORT. This year the Directors of Mediterranean Holidays have carefully selected the top ten holiday resorts of the sun-drenched Mediterranean to offer you fabulous, carefree holidays—and at prices all can afford! The price includes your flight by B.A.C. One-Eleven Continental Golden Jet of our parent company Channel Airways—and a bedroom with private bath at a seafront hotel—so send for your full colour brochure today!

15 DAYS IN MALTA

FROM 48½ GNS

15 DAYS IN ITALY

FROM 42 GNS

12 DAYS IN MAJORCA

FROM 33 GNS

12 DAYS IN SPAIN

FROM 32 GNS

mediterranean holidays Ltd

A CHANNEL AIRWAYS COMPANY

Tel: SOUTHIEND 63515 (5 lines)
OPEN MONDAY TO SATURDAY until 9 p.m.

Channel Airways

UP TO 50 DAILY ONE-ELEVEN JET AND PROP-JET SCHEDULED SERVICE FLIGHTS FROM SOUTHIEND AIRPORT DIRECT TO

SOUTHIEND AIRPORT, ESSEX Tel: 40334

PARIS	FROM £11/13s RETURN
OSTEND	FROM £7/10s RETURN
ROTTERDAM	FROM £14/16s RETURN
JERSEY GUERNSEY	FROM £5/4s SINGLE
EAST MIDLANDS	FROM £2/13s SINGLE

See your holiday airliners on show at Southend Airport—FREE—this Sunday 11 a.m.—5 p.m.

POST THIS COUPON TODAY!

To: AIRWAYS HOUSE, 95 SOUTHCHURCH ROAD SOUTHIEND-ON-SEA OR SOUTHIEND AIRPORT

Please send me FREE details of holidays and flights to _____

NAME _____

ADDRESS _____

or see your local appointed agent



KILLER DOGS FORCE FARMER TO GIVE UP KEEPING SHEEP

KILLER DOGS have forced a Billericay farmer to give up sheepfarming. He will sell his 90-strong flock this summer.

Mr. Kenneth Goble (55), Snails Hall Farm, Green Farm Lane, told the "Standard" on Tuesday: "In the past few years I have been losing animals regularly and I have decided sheep farming is just too much of a strain to be worth while.

"My wife Gladys and I cannot sleep at night for fear of what we will find in the morning.

"We worry every time we hear a dog bark."

He added: "Lambing started in early December and since then we have only had daytime attacks, and I have been able to chase the dogs off, but, even so, I have lost five lambs and a ewe in lamb, valued at about £32.

"I am also having to bottle feed another lamb which had its tail bitten off recently before it was rescued.

"The ewe had lost all maternal instinct for it after a night's separation, and the lamb is too scared to leave the house."

A sheep farmer since before the war, Mr. Goble said he will now concentrate on rearing cattle.

"It is a great pity because I like sheep, and in the spring people bring their children from miles around to look at the lambs.

"It is out of hand, though. The town is developing and more houses mean more people and that means more dogs.

"A lot of these people come from the town and they just don't realise what havoc their pets can cause.

"They are surprised when their pets get into trouble or get shot."

Our picture above shows Mrs. Gladys Goble giving Larry the Lamb his dinner, while Ben, a Labrador/Boxer cross-breed, stands guard. Also in the picture is Mr. K. H. Goble. Larry was one of the lambs attacked by a dog, and had his tail bitten off.

Another theatre trip

MEMBERS of the Langdon Hills Over Sixties Club enjoyed their visit to the Queen's Theatre, Hornchurch, so much that they are to repeat it in a fortnight.

Entertainment for the afternoon was a Bingo session. Cakes for tea were supplied by Mrs. Henbest, in celebration of her birthday, and birthday honours also went to Mr. Shipman.

Mrs. Sheppard, who presided, welcomed three visitors to the Club, sick members, including Mrs. Dedlow and Mrs. Goodin, were remembered.

Tea hostesses were Mrs. Parker and Mrs. Whitfield.

SAW OPERA FILM Twenty-six pupils and two teachers from Billericay Secondary School went on an educational visit to the Odeon Theatre, Brentwood, last week. They were members of the school orchestra and choir. They saw the colour film of Mozart's opera Don Giovanni, an actual performance from the Salzburg Festival.

£250 gifts to make up road

PROMISES of donations amounting to about £250 have so far been received towards the £1,000 estimated to be needed to make up Sugden Avenue, Wickford, Newhouse Farm Estate Residents' Association Committee were told at their meeting on Monday.

The idea of making up the road with some durable material came at the Association's annual meeting when it was reported that a quotation of £1,000 for tarmacadam had been received.

The Committee decided to continue their investigations into the type of material to be used and the number of residents who would be willing to pay towards the cost.

It was stated that the present road fund, where residents owning cars

Soccer stars were visitors

FOUR hundred people took the opportunity to have a night out and meet four West Ham stars on Saturday.

The visiting footballers were World Cup scorers Geoff Hurst and Martin Peters, with John Sissons and Ron Boyce.

The dance was organised by Hford's Social Club and music was by the Troubadours.

There was a fancy dress competition, which was judged by the soccer players, and winners were Annette Boulton, Gillian Low and Mary Stillaway.

THURSDAY CLUB Bingo provided the entertainment at last week's meeting of South Green Thursday Club in the Memorial Hall. Mr. Graham was back in the chair after three weeks' absence through illness, but Mr. Moore was still off sick. Birthday honours were accorded to Mrs. Smith, who provided the tea.

TOWN CENTRE SHOP EMPLOYEES ARE TO BE QUIZZED!

IN AN ATTEMPT to sort out Basildon's shop hours' chaos, the Shopworkers' Union held an open meeting in the Town Centre on Wednesday.

The result was a decision to quiz all Town Centre shop employees for their views on various shopping systems.

"First of all we want to establish our own policy on this very complex matter," said U.S.D.A.W.'s Essex Organiser, Mr. John Summerhill. "Then perhaps we will meet with the Chamber of Trade and Basildon Consumer Group to see if we cannot reach some agreement."

Most important factor, he felt, was simplicity. "We want to make our own questionnaire easy to answer. If we take it stage by stage we may be able to get somewhere."

Questions he envisages appearing on the questionnaire include:-

"Are you in favour of six-day trading?"

"Are you in favour of five-day trading?"

"Would you prefer all-day closing on Monday or on Tuesday?"

Basildon has no U.S.D.A.W. branch at present. It comes under the Southend branch.

Thirty people attended the shop hours meeting, said Mr. Summerhill. "Very disappointing in view of the fact that we notified all Town Centre shops."

A five-member committee, with three women members, was formed to launch and consider the questionnaire response.

Careless - fined £10

Charles George Gardner, of Whitmore Way, Basildon, was fined £10 with two guineas costs at Chelmsford on Thursday week for careless driving at Margarettine.

"Fancy cutting yourself off from £25,000

by not holding Premium Bonds"

Every quarter a single bond, value £1, puts you in line to win the £25,000 jackpot prize. Every month that same bond can win you anything from £25 to £5,000. Every extra bond gives you an extra chance to win... and every bond can be changed back into pound notes again without loss. Do you really want to take the decision to cut yourself off from all these prizes? Your bank or Post Office will gladly tell you how to cut yourself in, by buying Premium Bonds. Everyone should have a few... and the more, the better.



PREMIUM SAVINGS BONDS
(Maximum holding 1,000 Bonds)

You can't lose... You could win... and you're helping the Country

Issued by the National Savings Committee, London, W.C.2.

KINGSWAY THEATRE
DISCOTHEQUE — HADLEIGH — ESSEX
M & M Promotions in association with Radio London
PRESENT
FRIDAY, FEBRUARY 17 **THE PUSSYFOOT**
SATURDAY, FEBRUARY 18 Radio London D.J. Tony Black-
burn will introduce
THE ROOSTERS
SUNDAY, FEBRUARY 19 **THE FLAMES**
7.30 to 11 p.m. — Admission 5/-

KINGSWAY THEATRE
HADLEIGH — ESSEX

M & M PROMOTIONS present
**A NIGHT WITH
JULIE FELIX**
ONE PERFORMANCE ONLY
SUNDAY, FEBRUARY 26
8 p.m. Doors Open 7.15 p.m.

Tickets 14/6, 12/6, 10/6, 8/6
Inclusions of 2/- per ticket for black bookings from youth clubs,
church organisations, etc.
OBTAINABLE FROM
Booking Office, Kingsway Theatre
Telephone 558410 — Open 9 a.m. to 6 p.m.
and all usual agencies

KINGSWAY THEATRE
HADLEIGH — ESSEX
M & M PROMOTIONS IN ASSOCIATION
WITH RADIO LONDON INVITE YOU TO
COME and HEAR and SEE
Live on Stage!

**The Fabulous
GEORGIE FAME**
Plus
CAT STEVENS
THE SENSATIONAL NEWCOMER

Compered by
— KEITH SKUES —
who will also introduce
EPISODE SIX • THE STYLE
and Southend's Newest Rave **THE MACHINE**
WEDNESDAY, FEB. 22nd
IMPORTANT — THE NEW TIME OF THIS SHOW
AND SUBSEQUENT SHOWS WILL BE 6.45 P.M.
AND 9.15 P.M.

Reserved Seats at 15/-, 12/6, 10/6, 7/6
2/6 reduction on all tickets for black bookings from youth clubs,
church organisations, etc.
OBTAINABLE FROM
Booking Office, Kingsway Theatre
Telephone 558410 — Open 9 a.m. to 6 p.m.
Hedges & Johnson H. W. Stone
37-43 Broadway West 1074-1249 London Road
Leigh-on-Sea Leigh-on-Sea
Telephone 72297 Telephone 72892 72007
TOWER RADIO, 125-127 FURTHERWICK ROAD, CANVEY
Telephone Canvey Island 2211
UNRESERVED SEATS AT THE DOOR

BOOK NOW! BOOK NOW! BOOK NOW!
To M & M Promotions, Kingsway Theatre, Hadleigh
Please send me Tickets at Each
For Performance 6.45 p.m./9.15 p.m.
NAME (Block Capitals)
ADDRESS
Please find enclosed S.A.E., M.O./P.O./Cheque for

— Quality Tuition with a Fully Qualified Instructor —
THE HAMMOND SCHOOL OF MOTORING
MR. C. R. HAMMOND
★ Ministry of Transport Approved Instructor ★
★ R.A.C. Registered and Approved Instructor ★
★ Member Institute of Advanced Motorists ★
★ Member The League of Safe Drivers ★
DUAL CONTROL ★ DOOR TO DOOR ★ PAY AS YOU LEARN
BASILDON 23318

Pie and chips for the boys...



... AND THEIR GUESTS!



The picture at the top shows boys of the 4th Basildon Boys' Brigade after their pie and chips supper at Basildon Congregational Church Hall last week, and the picture above shows some of their guests.

Indiscriminate parking adds to fire risks

CONCERNED ABOUT the possible dangers of indiscriminate parking on interconnecting roads in their area, such as Passingham Avenue and Kingsway, the South Green Area Committee of Billericay Residents' Association may seek the help of local M.P. Mr. Eric Moonman.

Complaints were made to Basildon Council and the Police last year, but the situation was unchanged, members learned at the Committee's annual meeting on Wednesday week.

Chairman Mr. Wally Trotter commented: "One day there is going to be a fire or an accident with terrible consequences, because the fire engine or ambulance will not be able to get through."

Said Secretary Mr. Roy Hems: "We wrote to the Council over a year ago about this and the fact that service and life-saving vehicles would find it almost impossible to pass was one of the reasons," he said.

"We asked them if they would consider writing an article about it for our monthly journal and one of their committees agreed to this request unanimously. But to this day, we have not had a word, and we are getting rather anxious about the situation."

It was agreed that the committee should consider the matter again at their next meeting. They are also to look into complaints about the

not just the dog-ends of someone else's express service," he said.

Mr. Trotter thought the answer was to break the services down so that Billericay services ran from perhaps Romford to Rayleigh. "This is definitely a problem we should take up," he said.

Non-mains sewage

Another matter the committee will consider is the high incidence of gastric infection locally.

Some members accepted that it was a national problem, but Mr. Featherstone rejected this idea, which was put forward by Basildon Medical Officer of Health, Dr. Patrick O'Dwyer, in reply to Association inquiries about the source of infections and what steps could be taken to deal with them.

Mr. Featherstone believed there was more gastric infection locally than in most other places, and he thought it was caused by the amount of non-mains sewage which existed in the area.

"A lot of homes still have septic tanks and a lot of new places are being built with cesspools, on roads which have yet to be provided with main sewers," he said.

Association Secretary Mr. Brian Hooks said it would be a good idea for the committee also to consider asking the Council what powers they had to force people to make connections to the sewers.

There were complaints too, about Basildon Council refusing to take away certain categories of rubbish, and the committee are to seek full details on the Council's refuse collection service.

Officers and committee elected were: Chairman, Mr. W. Trotter; Secretary, Mr. R. Russell; Treasurer, Mr. P. Bryant; and Messrs. F. Bradshaw, H. Wells, R. Barnes, L. May, Hems and Featherstone.

Rest Room popular

SINCE ITS opening last week the old people's Rest Room at Lake Meadows Recreation Ground, Billericay, has been doing well.

There has been a steady flow of users coming from the surrounding area, and also from afar—one couple came from Manchester. They were staying with relatives in Billericay.

"We are seeing people we did not even know existed from our own area," said Mr. H. Hawes, Secretary of the Urban district O.A.P. Welfare Committee on Tuesday.



Place on Saturday at St. Cath-
ward, of Mr. Colin Pilkington,
Mrs. C. Pilkington, of Falbro
and Miss Margaret Jill Willis,
and Mrs. A. J. Willis, of Keith
the service was conducted by

away by her father and wore
white velvet and lace, with a
floral head-dress. Her
lilies and blue hyacinth bells.
by two friends, the Misses
and Barbara Wright, and a
Miss Lesley Morgan. They
pink jacquard, with
blue hyacinth bells. Best
kington.

(Photo by W. J. Charlesworth)

Park and Wick

development schemes for
y, and The Wick, Wickford,
again. The Executive Com-
had a special meeting to
members were told that the
have the areas defined as
ment and designated for com-
ity
tised and further considered
from the point of view of
representations received.
The application was for the
development of the 34 acre
site by about 25 acres of
residential development, in-
cluding a children's play-
space, and provision of a new
primary school in about six
acres adjoining North Cres-
cent, together with a small car
park to serve Wickford
Cemetery.

The cost was
£50,000

THE COST of the new self-
service station opened by
Walker's, of Basildon, Ltd., in
East Meyne, was £50,000 and
not £15,000 as mentioned last
week.

Thieves take £30
Thieves ransacked No. 74
Gobsons, Basildon, on Friday
evening, forcing the front door
and taking £30 in cash.

They're good drivers!



Guest speakers and committee members pictured at Lee Chapel North Motor Club's "Driving Evening" held at the Community Hall on Wednesday week. They are Chairman Mr. A. Dare, Mr. V. T. Brown (Secretary), Mr. G. E. Hanson (Social Officer), Insp. P. Skinner (from Traffic H.O., Chelmsford) and Sgt. P. Milnes (Basildon Division Road Safety Officer).

WICKFORD COUPLE'S GOLDEN DAY

MR. HERBERT Hickmott (72) and his wife, Fanny (73), of Bruce Grove, Shotgate, celebrated their golden wedding on Friday.

Married at St. John's Church, North Kensington, the couple have lived in Shotgate since 1956, when they moved from Greenford, Middlesex. They have five children and 11 grandchildren.

A retired clerk, Mr. Hickmott enlisted in the Royal Artillery in 1912, but bad eyesight prevented him from fighting abroad. Demobbed in 1919, he got a job as a clerk earning £1 a week.

"When I finally retired in 1965 I changed from a breadwinner into a housewife almost overnight," said Mr. Hickmott.

"My wife got arthritis very badly very quickly and, although she still manages to do most of the cooking, I have to do all the housework," he explained.

But in spite of her disability Mrs. Hickmott still manages to carry on her favourite hobby of knitting and Mr. Hickmott has enough time off from the household chores to keep their garden in trim.

Both are members of Shotgate O.A.P. Club, and Mrs. Hickmott also attends the Wickford Salvation Army Corps Physically Handicapped Club.

ROTARY CLUB
Rotarian Leslie Kersey presided and there were 30 members, two visitors and a guest present at Billerica Rotary Club's luncheon meeting on Monday. It was a "fellows" meeting and a five minute talk was given by Rotarian Bill Blackburn. His subject was the Caravan Club of Great Britain.



Mr. and Mrs. Hickmott on their golden wedding day.

Restaurants change hands

TWO BASILDON restaurants are in the process of changing hands this week.

The Sombro in Southernhay, which was opened by Mr. Geoff Newman seven years ago, has been sold to a Suffolk entering firm. It will reopen shortly.

The Van Gogh public house and restaurant is expected to change hands next week.

Manager Mr. John Blake, ex-Councillor who launched the Van Gogh five years ago, is leaving.

Mr. Toni Valente, with two cafes in the Town Centre, told a reporter: "We are applying to take over the licence next Tuesday."

J. R. ROBERTS STORES LIMITED

INTEREST FREE AND UP TO 2 YEARS TO PAY AND NO DEPOSIT IF PAYMENT COMPLETED IN 9 MONTHS

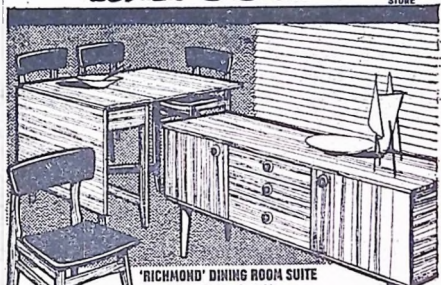
NOW and until March 4



'EXETER' THREE PIECE SUITE

In British tweed. Loose reversible foam cushions. 3 seater settee. Deposit £14.11.0. 24 Monthly Payments of £2.8.3. Total H.P. Price 69 GNS.

69 GNS



'RICHMOND' DINING ROOM SUITE

Comprising sideboard, table and 4 chairs. Teak finish. Deposit £10.8.0. 24 Monthly Payments of £1.13.4. Total H.P. Price 48 GNS.

48 GNS



'AUSTIN' BEDROOM SUITE

Comprising 4' wardrobe, 3' Gents Fitted Bed and commodious 6 drawer dressing table. Teak finish. Deposit £16.10.0. 24 Monthly Payments of £2.14.2. Total H.P. Price 78 GNS.

78 GNS



'EVENTIDE' FAMOUS 'ZODIAC' DIVAN SETS

Luxury mattress with extra deep EVENCOIL springing, with EVERFLEX weight distributor for even all-over comfort. Deep quilted top.

3' 29-17-0 19 GNS

No deposit 9 Equal Monthly Payments of £2.4.4. Total 19 GNS.

4' 6" 29-17-0 29 GNS

No deposit 9 Equal Monthly Payments of £3.7.0. Total 29 GNS.



'EUROPA' OCCASIONAL CHAIR

A revolving occasional chair to suit any room. Reversible seat cushion with zig-zag fastener. Foam upholstered, covered in nylon foam backed material.

No deposit 9 Equal Monthly Payments of £1.1.4. Total 16 GNS.

16 GNS

NEST OF TABLES

Teak finish. Special offer No deposit 9 Equal Monthly Payments of 10/6. Total 8 GNS.

8 GNS

NO DEPOSIT

NO DEPOSIT

J. R. ROBERTS 90 HIGH STREET SOUTHEND

Telephone: Southend 66631



They were obviously comprehensive! They are members of Ramsden Bellhouse Horticultural Society enjoying themselves at a back-to-school social at the Community Centre on Saturday.

SPECIAL OFFER! ALBANY CLEANERS

now save you even more money

Gents' Suits Normal Price 7/11 NOW only 5/11	Plain Skirts Normal Price 4/- NOW only 3/-
-----------------------------------------------------------	---------------------------------------------------------

and retextured and polyrobed FREE!

OFFER ENDS FEB. 28th...

SO HURRY! HURRY!

Eastwood Lane Westcliff-on-Sea Tel: Southend 78272

You are advised to warm up!

ELECTRICITY WILL be cut off all day in Wickford's Park Estate today (Friday). Householders concerned have been notified by the Board, but many are facing a day without heating of any kind.

For the day central heating systems in these new Council houses are electrically activated.

One tenant with this problem is Mrs. Jeanette Marrett, of Throckway Road, Wickford. "Everything in the house is electric," she said.

"We will be completely stranded. I have asked for a generator, but the Board says this can't be done."

"I won't even have the means of making the baby's feeds up," said Mrs. Marrett. "I'm sure there is something they could do to help us if they wanted to. Neighbours with gas stoves have offered to help me out of course, but

that is not the point." A spokesman for the Board told a reporter: "We have had a fault in the system which has done a certain amount of damage. The supply must be cut off to make permanent repairs."

"We have asked for eight hours, but I hope that for the majority of people it will only be about four hours, with perhaps another hour later in the afternoon. A small number of people may be off for the whole eight hours."

It was sometimes possible to use a generator, but not in this case. My advice to householders is to warm the house up earlier than usual," he said. "In four hours it will cool off, of course, but it should not be too bad."

Council houses better than those of Corporation?

HOUSES BEING built by Basildon Council are better and cheaper than Corporation houses, claimed Council Housing Chairman Coun. R. Brown, speaking to local trade unionists on Wednesday.

He told Basildon Trades Council. The industrialised houses the Corporation are putting up alongside Laindon Link are abortions, but I have seen some beautiful industrialised houses in Sweden.

"We have a contract to build council houses like them and workers start on them March 5th. They won't be anything like that lot at Laindon."

Industrialised houses were not at present any cheaper than orthodox houses, said Coun. Brown. "The only thing we gain is that they are, or should be, quicker. The Minister of Housing has made it quite clear that he will give preferential treatment to councils going in for industrialised housing—because he feels it is quicker."

Coun. Brown visited the Trades Council to defend the rent rises and rebate scheme that the Basildon Council introduced on January 1st.

"We didn't bring in this rise for fun," said Coun. Brown. "In terms of vote catching we have lost a great deal. I don't suppose we have a single Conservative supporter in the whole of the Council housing estate now!"

But the rent increases were essential, said Coun. Brown, and had been anticipated by the Labour-controlled Council a year previously.

The Council were in the middle of a bumper building

effort for the 900-odd houses on the list.

Building costs were going up and the average sale including land of council houses each council house now £4,900. Interest rates were between seven and eight per cent.

"If we rented these houses at cost the rents would be 20," said Coun. Brown. "They had to be subsidised if we had continued building at the present rate we would have built up a revenue account deficit of £140,000 by the end of March 1968. That is a 20 rate and I was not prepared to let it happen. I had to increase rents. The rise has been agreed between January and July in the hope that things would improve."

"I have every hope that there won't be a need for the increase in July with increasing Government subsidies and increased bank rate."

In proposing the increase the Housing Committee realised there would be hardship cases, said Coun. Brown. "I read a book on housing management and one of the housing periodicals and I thought what I thought was the latest rebate scheme. My opponent called it an abortion scheme. I am the first to say it was far from generous. But you see we do not know what our tenants can do. We were guessing at what rebates would be allowed. It was better to be in the position to increase rebates later rather than be over-generous and have to increase rents again."

Start Electric Central Heating with 2 'Double E' storage radiators for only

55

gns (fully installed)

Two 'Double E' storage radiators are all you need to start Electric Central Heating. You can start NOW—because this first step costs you only 55 gns. And you get two 21 kW Deluxe Models, completely installed with all the 'Double E' extras.

The 'Double E' is the sign of an exclusive Electricity Board appliance—tested and approved.

The 'Double E' means you get installation by skilled Eastern Electricity technicians.

Only the 'Double E' gives you a 2-year double guarantee, on materials and labour.

Hire Purchase terms make it even easier for you to start. Two Deluxe 'Double E' models can be yours for £19.50 deposit and 8 quarterly payments of £5.4.11 (about 8.1d a week). Total purchase price £61.4.4. Standard Model, 50 gns for two, or £17.10.0 deposit and 8 quarterly payments of £4.15.4 (equals 7.1d a week). Total purchase price £55.12.8.

Ask for details of our "No-Deposit" Personal Loan Scheme.

You can see the full range of storage radiators at your Eastern Electricity shop. Or write for booklet on low-cost Electric Central Heating.

Don't you owe it to your family to start Electric Central Heating? Now?

17s 1d a week—cost of running 5 storage radiators

Mr. Harvey, of Highlands Boulevard, Leigh-on-Sea, had 5 electric storage radiators installed in 1964. He was so pleased with them, that when he extended his house this summer, he added two more. The 5 radiators cost £44.8.2 to run over a full year, or 17s. 1d a week. Mrs. Harvey says: "Our one wish is that we could have installed the radiators years ago when the children were younger. As a housewife, I find the system extremely labour saving."

Eastern Electricity

Electric Central Heating is cheap to buy, cheap to install, and runs on half-price, off-peak electricity.



Is there a more dangerous road?

A Sunnymede problem

IS THERE a more dangerous road than Outwood Common Road, Billericay? It would be hard to find one, according to Mr. Roger Longdon, Chairman of the Sunnymede Area Committee of Billericay Residents' Association.

Mr. Longdon was expressing his disappointment that the road had not been reconstructed during the year.

He told Sunnymede members at their annual meeting on Tuesday: "I suppose we must blame the financial restrictions of the National Government on capital expenditure for that, but it would certainly be hard to find a worse, more dangerous road carrying so much traffic."

"The steepness of the hill, the bends, the complete lack of footpaths and surface drainage, and the appalling standard of street lights make it one of the greatest potential dangers to life and limb in the urban district."

Another disappointment, he said, was the failure of the Council to agree with a request for a handrail in Stuart Way. "This was an extreme disappointment as we had, in a petition, over 90 per cent support and the grounds on which our proposal was rejected can only be described as paltry."

The Committee had had successes, however. Chain-link fencing was finally erected by the railway bridge in Outwood Common Road and hedges cut, and this, with the partial closure of the school entrance in Mons Avenue, had made a considerable contribution to the safety of residents and their children before any serious accident occurred to highlight the dangers.

The Committee also felt the construction of a proper entrance to the Moody Estate was due to their efforts, he went on, and that they had ensured some protection for residents living around the proposed Outwood Common Community Centre against noise and visual annoyance.

The Committee still maintained that car parking at the Centre would be "grossly inadequate," however, and that the dangers from parked

cars in the nearby streets would be considerable.

He added that they had also opposed an application for planning permission for residential development and a sewage pumping station in Norsey Wood, where it bordered Break Egg Hill.

"Having obtained the promise of the County Council to make Norsey Wood into a nature reserve and public open space, and proposal to develop it was, and always will be, strenuously opposed by this Committee," he said.

They were also concerned about the forthcoming extension of Valley Road into the Moody Estate to meet Greens Farm Lane, north of the junction with Outwood Common Road.

"The next year should see the creation of the more dangerous T-junction at Billericay—with only a Green Way sign in Jacksons Lane for protection," he said.

The annual statement of accounts was presented by Treasurer Mr. David Doughton, who reported total income of £52.9s. 9d., including subscriptions from 302 households. This figure included new members, and as 22 had been lost during the year there had been a net gain of 28. Officers and Committee elected were: Chairman, Mr. Longdon; Secretary, Mr. Doughton; Treasurer, Mr. Doughton; and Mr. and Mrs. Branton-Speak and Mrs. B. Hooks, P. Vardon, L. B. House and P. Stowe.

Timber fire

Firemen were called to a fire on a wall between a bridge and a building on the Wharf on Monday evening where timber shoring in the wall was alight. The fire was soon put out.

MOVIE EVENING

Basildon Young People's Community Centre on Wednesday evening will show three films — "A Quiet Place," "Kismet," and "A Day in London" — to Basildon Young People's Community Centre.



MAYFLOWER EVENING INSTITUTE, BILLERICAY, LADIES' KEEP-FIT CLASS HAS ABOUT 70 MEMBERS, AND SOME OF THEM WHO ATTEND THE MONDAY EVENING SESSION ARE SEEN ABOVE.



BELOW IS MRS. LILY KNOWLES, THE INSTRUCTRESS, IN ACTION!



Stationmaster becomes Station Manager

MR. COLIN TURNER, Stationmaster at Billericay for about five years before the position was "axed" on the appointment of a Station Manager based at Wickford, has himself been appointed a Station Manager.

Next week he takes over at Teddington, which, with Strawberry Hill and Fullwell, will come under his jurisdiction.

For the past seven months Mr. Turner has been on special duties with British Rail.

In his 21 years' railway service he has always been with Eastern Region, now his appointment takes him to the Southern Region.

A married man, with three children, Mr. Turner, who is Assistant Secretary of Billericay Rotary Club, lives at Mountnessing Road, Billericay.

Our picture above shows Mr. Turner with his wife, son Graham (14) and daughter Yvonne, aged 11.

£250 for car park

APPROVAL HAS been given by Basildon Council Finance Committee for £250 to be spent on surfacing the car park at Basildon Evening Institute at Mayflower County Secondary School, Billericay.

The money will be from savings on the Committee of Education estimates on grants to voluntary organisations.

BRITISH CHILDREN CHARMING BUT...

MRS. MARY-LOU Hayden, an American teacher working in London through an exchange scheme, last week described British children as "charming and well-behaved."

But Mrs. Hayden, speaking to Billericay Young Liberals at the Crown Hotel, went on to say that she considered American education superior to British. Classes were smaller and teaching was a highly respected and well-paid profession, she said.

She also spoke of American life in general, and answered questions on a wide range of topics, among them Vietnam, on which her personal view was that gradual de-escalation by the United States was the way to achieve peace.

WESLEY GUILD

Wednesday week's meeting of Wickford Methodist Wesley Guild was a Home Missions anniversary celebration. Mrs. F. Martin presided, and Mr. R. Martin gave an illustrated talk on the work of the Home Missions in Dorsetshire. The annual report was presented by Mrs. J. Thurman.



Boys from the 4th Basildon Boys' Brigade Company pictured with their trophies at the parents' evening held at Basildon Congregational Church Hall on Saturday.

Tea, not coffee!



The Billericay Cystic Fibrosis Group held a coffee morning and bring-and-buy sale at the Reading Rooms, Billericay. Of course, there was someone who wanted tea, not coffee, but Mrs. Beryl Clark, Secretary of the Group (left), Mrs. Mary Hitchens (centre) and Mrs. Marion Rix were ready to oblige.

School hall and kitchen hopes dashed

HOPES THAT a new hall and kitchen might soon be provided at Billericay Infants' School to help ease the accommodation problem during meal times at both the infants' and primary schools have been dashed by the County Education Committee.

Mr. Eric Moonman, M.P. for Billericay, took up the urgency of providing increased accommodation with the County. Now they have let him know their views and he says: "I am very unhappy about the reply, but I will continue to press the authorities. The County are being inflexible when a quick, intelligent decision is required."

Chief Education Officer Mr. David Bungey told Mr. Moonman that Basildon

Committee for Education had also now recommended a new hall and kitchen as a first instalment of rebuilding the infants' school.

This would be considered by the Building Programme Sub-Committee.

Mr. Bungey went on: "I am bound to say, however, that it is unlikely that the Committee will be able to include the new hall and kitchen in their minor capital programme for 1967-68."

"The authority's allocation of £382,000 is barely sufficient to meet the cost of the first priority list of projects drawn up by the Committee in November, and will allow the inclusion of none of the urgent

projects on which the Committee asked that forward planning should begin."

"To include the Billericay project at this stage would mean omitting a very urgent and already approved project elsewhere in the County."

Mr. Bungey concluded, "It will be some months before the Committee consider the minor capital programme for 1968-69, but I am sure that when they do they will be very anxious to include this project if they can do so within the overall limits proposed."

Coffee-time

Wickford Community Association have arranged a series of coffee mornings at the Community Centre on Tuesdays and Thursdays from 9.15 a.m. until 11 a.m. The purpose of these is threefold—to give mothers the opportunity of meeting for a friendly chat; to inform the public about the work of the Association and what it has to offer, and to swell the Association's funds.

There's no mismanagement of Runwell Council's financial affairs!

In fact, they will reduce the rate!

A RECENT newspaper report that Runwell Parish Council had decided to go on a "spending spree" because they had too much money in the kitty gave the impression that the Council had mismanaged their financial affairs, Vice-Chairman Mr. H. A. Norwood told the "Standard" this week.

"The report," said Mr. Norwood, "implied that we have got a balance of £1,800 and nothing to spend it on. This is not true. For a start off this is a quite normal amount to have in hand at this time of the year—it is only roughly £100 more than last year's figure, and secondly, all but around £450 of this balance has been earmarked for various uses."

The Council had several projects in hand, he said, such as a Parish Hall improvement scheme, costing about £300 and hall car park extensions, costing a further £300.

There were also bills for gas and electricity, and the clerk's and caretaker's salaries which still had to be paid out of this money, he added.

"We are not even going to hoard the £450 we expect to have left over when the financial year ends next month. We believe in passing on the benefit of any surplus to the ratepayers, and therefore we are planning to reduce the rate by 1d. a rate which will save them £427."

The surplus £450 would come about for a number of reasons, Mr. Norwood went on.

"When we make our estimates for the year," he said, "we budget for the full cost of all the work we plan to carry out, in spite of the fact that much of it is the subject of grants from the County and Rural District Councils which may cover anything from 15 to 50 per cent of our total outlay."

"This year we struck it lucky. Most of the grants were paid in full and we found ourselves with a certain amount of money left over."

"I therefore fail to see how we can be accused of mismanaging our finances when the Council are in the admirable position of being able to lower the rates."

LAND AT DROMFORDS
Basildon Council's Housing Committee Chairman has approved the start of negotiations for the acquisition of land and property fronting Dromfords Drive, Wickford.

TWO GIVEN DECREEES

MARRIED TEN years, Mrs. Joan Lynn, of Ballards Walk, Basildon, was granted a decree nisi at Southend Divorce Court on Tuesday on the grounds of her husband's adultery.

The Special Commissioner exercised discretion in respect of her admitted adultery. She married Mr. George Lynn at Ilford, in 1957, and there are no children of the marriage.

On the grounds of her husband's adultery a decree nisi was granted to Mrs. Ellen Ruby Dowles, of Sevenoaks, Wickford.

She married Mr. Frederick William Dowles at Brentwood Register Office in 1951 and there is one child.

Mrs. Dowles was awarded costs and the Special Commissioner exercised discretion in respect of her admitted adultery.

Hidden profits grouse

A RESOLUTION agreeing with the need for a prime and incomes policy, but disagreeing with facts arising from it, has gone from Wickford Labour Party to the Constituency Party for their support.

The party deplore the fact that though incomes are inflexibly frozen, prices are not, due mainly to the extra hidden profits being allowed to be made by many of the service industries using Selective Employment Tax as the excuse for a much larger price increase than strictly necessary.

They also point out that dividends "though allegedly frozen" will ultimately be paid, but frozen increases in income will not be backdated.

GRAND OLD MAN WHO DEFIED THE CORPORATION DEAD

BASILDON'S GRAND old man, 93-years-old Mr. John Hawkins, who refused to leave his Clay Hill Road home to make way for the new Vange housing estate, is dead.

In September Basildon Development Corporation announced that they had decided to leave white bearded Mr. Hawkins in his little timber home where he had lived for 50 years.

On numerous occasions previously the Corporation had tried to buy him out without success. At the time the General Manager of the Corporation said: "He is one of Basildon's grand old men. We could have forced him to sell, but we respect his wish to stay."

When the "Standard" interviewed Mr. Hawkins in September he said: "I will never let them take my home. I'd shoot them first."

At the time the foundations of the new Vange houses had crept up to three sides of his bungalow. Since then he had become more hemmed in.

On Tuesday Mr. Hawkins' fight for survival came to an end when he was found dead in bed at his home.

Lord Sorensen at Basildon Labour Party dance



Labour life-peer Lord Sorensen seen at the Basildon Labour Party dance at the Locarno on Saturday with Coun. Joe Morgan, Mr. Eric Moonman, M.P., and his wife, and Mr. William Dorrington, who is a candidate in the by-election at Pitsea on Saturday week.

DER

19"

ALL-STATION TV

8'1"

WEEKLY

NO MORE TO PAY FOR 52 WEEKS

after initial payment of £20.18.6

Compare this with the first-year cost of any other TV Rental Scheme. You save up to £10 in the first year alone, compared with other schemes in which you pay the following month after installation. This D.E.R. Single Annual Payment plan is the best bargain ever! 10 days free viewing. Immediate, fast, skilled free service.

OTHER 19" AND 23" MODELS

NO DEPOSIT

INSTALLED ON PAYMENT OF JUST ONE MONTH'S RENT. *Manufactured before October 1965

Minimum rental period 12 months.

175 HAMLET COURT RD., WESTCLIFF-ON-SEA
Tel: Southend 48000

ROUNDSMEN JUST HATE THIS ROAD



MUDDY QUICKSAND KEEPS FOLK AT HOME!

ELDERLY PEOPLE in Queens Park, an unmade private road in Billericay, are virtually unable to leave their homes unless they are prepared to stumble through nearby woods to reach a main road.

Part of Queens Park, they claim, has been turned into a "muddy quicksand" by Basildon Council contractors lorries and bulldozers travelling to and from demolition sites on the estate.

Delivery men, bakers and milkmen have to carry their loads down the road for fear that their vehicles will get stuck in the mud. Ambulance drivers are afraid to chance it unless it is an emergency.

Chairman of Buttsbury Social Club 62-years-old Mrs. Edith Hawes, who has lived in Queens Park 25 years, told the "Standard" this week: "The road is absolutely impassable, especially when it rains."

"It was bad enough before the Council came along with their lorries and tractors, but now it has been churned up into a quicksand-like consistency."

Sixty-eight-year-old widow Mrs. Ellen Spawll has lived in Queens Park for 48 years. She is a regular out-

patient at St. Andrew's Hospital, but she is finding it increasingly difficult to get to the hospital for treatment.

"The hospital usually send a car or an ambulance to fetch me, but the road has got so bad that it is impossible for them to drive all the way to my door," she said.

"Instead, the ambulance driver has to ring my next door neighbour to tell me when they have arrived and I have to struggle through the mud or go the long way round through the wood to meet them."

Said Mrs. Ruby Fairman (59): "The majority of us go in fear of falling down in the mud and not being able to get up again—it's so oozy and sticky."

"It is particularly dangerous in the dark because there is no lighting."

Mrs. Hawes went on: "We understand that the Council have a job to do, and we

realise that this road is probably scheduled for development some time in the future, but surely it is not too much to ask for something to be done in the mean time?"

"All we ask is that the Council spare a couple of workmen to put down some hardcore or rubble as a temporary measure. It wouldn't cost very much and it wouldn't take very long, but it would make the world of difference to everybody who has to live and work in this road."

Commented a Council spokesman: "The Council are demolishing two disused bungalows in Queens Park. We have received complaints about the state of the road and we have been in touch with the contractors and asked them to restate it. A Council representative will also shortly be sent to inspect the area and review the situation."

TASTE OF BEEF

AT WICKFORD W.I. February meeting last week representatives of a Smithfield Market firm attended to give a talk and film show on meat from the live animal to the table.

A joint of beef was cooked during the talk and each of the 74 members present had a taste.

For three lucky number winners of a raffle there was a joint of ribs of beef each.

They were Mrs. Burgurs, Mrs. Buslag and Mrs. Mullis.

The demonstrators were thanked by Mrs. Johnson. Result of a competition for sausage rolls: 1, Mrs. Kempton; 2, Mrs. Long. The monthly competition was won by Mrs. Harvey, Mrs. Bulham and Miss Shrimplin. Mrs. Bull won the mystery prize.

Mrs. Halls presided and welcomed 10 new members. Mrs. Rice was in charge of the bring-and-buy stall and refreshments were served by Mrs. Long and helpers.

Greensted School

Greensted Infants' School's five teachers are all qualified. Our report last week on staffing problems at Pitsea Infants' School referred to Greensted as having three qualified and two unqualified teachers. This was incorrect and we apologise to the people involved.



Saturday was a big day for Ilford Social Club—and for five-years-old Michael Fanning!

The Club held a Valentine dance on Saturday, and members of West Ham football team were there and judged a fancy dress competition (see picture above). They decided Annette Boulton, Gillian Low and Mary Stillaway were the winners. The players were John Sissons, Ron Boyce, Geoff Hurst and Martin Peters.

A dream came true for young Michael Fanning. He is a keen West Ham supporter and goes with his father, Mr. Tom Fanning, to see the Hammers in action at Upton Park. World Cup scorer Geoff Hurst is one of his heroes and he had often wished he could meet Geoff. He did so on Saturday, and our picture on the right shows that they got on well together!



DUTY CHEMISTS

BASILDON

M. D. Godfrey, 35, East Walk, and S. N. Anderson (Chemists), Ltd. 213, Timberleg Lane, Basildon, will be duty chemists for week commencing Monday (February 20th). They will be open every weeknight (except Wednesday and Saturday) from 6 to 7 p.m. On Sunday (February 19th) S. N. Anderson will be open from 11 a.m. to 12 noon and on Wednesday (February 22nd) they will be open from 6 to 7 p.m.

BILLERICAY

Nix (Chemist), Ltd., 111, High Street, Billericay, will be duty chemist for week commencing Monday (February 20th). They will be open from 6 to 6.30 p.m. every weeknight (except Thursday, when they will be open from 7 to 8 p.m.). On Sunday they will be open from 11 a.m. to 12 noon.

WICKFORD

L. A. Garbett, 23, High Street, and M. W. Shadforth, 13, High Street, Wickford, are open alternate evenings from 6 to 7 p.m., also alternately on Sundays from 11 a.m. to 12 noon (name of duty chemist noted on the door of both shops).

ILLUSTRATED TALK

A talk on his recent visit to the Holy Land, illustrated by coloured slides, was given by Mr. H. Curtis at last night's meeting of Billericay Sisterhood. Mrs. Gildersleeve presided and tea was served by Mrs. Fretten and Mrs. Brundish.

YOUNG SOCIALISTS SHOULD REJOICE

LORD SORENSON—the Labour life peer who moved from the House of Commons to the Lords in 1964—visited Basildon on Friday as guest at the Labour party dance in the Locarno.

He was sent to the Lords to give a seat in the Commons for Mr. Patrick Gordon Walker, in a sensational move which shook the political scene three years ago.

But on Friday Labour's ex-senior M.P.—he was in the Commons 32 years—spoke on the Lords.

He said that though the House was composed of the "dominant class" the Socialist members were always pressing the majority party on issues to make Britain a better social society.

Saying Young Socialists should rejoice in the fact that the Labour Party in Britain was a great movement, he turned to local young Socialists. They should use all their energy to re-

turn Labour candidate Mr. Bill Dorrington in the Pitsea by-election.

This victory would set the precedent for future elections in the area, Lord Sorensen added.

Other guests at the dance included Billericay M.P. Mr. Eric Moonman and his wife Jane. There were about 200 at the dance at which 450 were expected.

LOCAL WILLS

Mrs. Margaret Elizabeth Unton, of Southend Road, Wickford, who died on December 17th, left £4,049 11s. gross, £3,984 10s. net.

Mrs. Fanny Catherine Savill, of Central Park Road, Laindon, who died on May 18th, intestate, left £3,031 4s. gross, £2,862 18s. net.



Mrs. Spawll has had stakes driven into the verge to prevent vehicles using the path in front of her bungalow.



Above are members of York Shipley Sports and Social Club Committee who were at the Club's dance at Fryens Community Centre on Saturday.

D. C. JEAKINS & CO., LTD.
FOR
REMOVALS — STORAGE
Local & Long Distance
EXPERT PACKERS, REMOVERS
SELF-DRIVE TRANSIT VANS AND
TWELVE SEATERS
44 HIGH ROAD, LAINDON, ESSEX

Phone:
LAINDON
2907
2114
3786

NEW TYRES
AND
BATTERIES
POPULAR SIZES
FULL TWO-YEAR GUARANTEE
CASH OR EASY TERMS!!
BASILDON TYRES
WASH ROAD Tel. Basildon 588 LAINDON
Open Daily 9 a.m. to 6 p.m.
From BASILDON: Along Under Mayne, under flyover, second right
(Church Road), turn right (Wash Road).
From LAINDON: Straight across Arterial Road, past The Fortune,
across Oak Hill Road into Wash Road.

DRIVING
WELHAM
SCHOOL of MOTORING Ltd.
★ MINISTRY OF TRANSPORT APPROVED
★ R.A.C. REGISTERED
★ POLICE METHOD OF TUITION
★ Members Institute of Advanced Motorists
★ DUAL-CONTROLLED FORD CORSAIRS
★ MORRIS AND AUSTIN 1100s
★ START AND FINISH AT HOME
TELEPHONE:
N. BENFLEET 445
S. BENFLEET 82810
LESSONS

See the
full range
of
TRIUMPH
CARS
LEYLAND
LIGHT
COMMERCIALS at

DISTRIBUTORS
LAMB'S LTD
AVENUE GARAGE
SOUTHEND ARTERIAL ROAD
(about 1 mile east of Gallows Corner)
HORNCHURCH Phone: 46631/2/3

Tramp King — Gipsy Queen



There was a gathering of tramps and gipsies at Lee Chapel North—see picture above. Mr. Geoff Mundy and Mrs. Barbara Walton, of Nicholas' Youth Centre, had the difficult task of judging the youngsters, and they decided that the Tramp King was David Downton, aged 12, with Roger Harper (12) the runner-up. The Gipsy Queen was Lorraine Day (9) and runner-up Susan Forde (11).

First winners of "Standard" plaque — but watch out for challengers!

THE 2nd Wickford Cub Scout Pack have become the first winners of the "Standard" plaque presented to Billericay and Wickford Scout Association last July during their celebrations of the golden jubilee of Cubbing.

And they gained the plaque by having the best log book commemorating the jubilee year. It contained facts, figures and pictures of life in Great Britain and will later be sent to a Cub pack in Denmark.

Mrs. Rosemary Weatherburn, A.D.C. Wolf Cubs, was judge.

The plaque will be held by the pack for a month. They can then be challenged for it by any of the other 12 packs in the District Association to take part in any Cub activity. The winners will then hold the plaque for a month and wait for a challenge.

At their meeting on Tuesday in St. Andrew's Hall the 2nd Wickford Pack were presented with the plaque by "Standard" representative Bob Jeffries.

He congratulated them on their success and on the way they had compiled their log book. "Other packs will soon be challenging you for the honour of winning the plaque, so watch out," he said.

Sixers Ian Green, Brian Hall and Tony Smith received the plaque, and the Pack, led by Akela Mrs. J. E. Loveday, said

their own "thank you" with their call of "Bravo." The Pack, which is at full strength—30 boys—and has a waiting list of 42, are acting as "guinea pigs" of the Association. They are the first to undertake the new training scheme.

"HOME ON THE RANGE" The Billericay Congregational Young Wives Group were also joined by five of their members who gave a colour demonstration entitled "Home on the Range" on Tuesday week. They were Mesdames Conway, I. Wood, D. Wood, J. O. Rorden and J. Nash. Mrs. Nash presided, and the episode was conducted by Mrs. Vandome.

Mental health question

MORE FACTS AND FIGURES WANTED

HOUSE OF COMMONS, MONDAY.

MR. ERIC MOONMAN (Billericay) asked the Minister of Health if he would institute an inquiry into the best means of obtaining information on the Mental Health Service.

The Minister of Health (Mr. Robinson) replied: "No. A great deal of information is collected and published about the Mental Health Service by means which are considered to be satisfactory."

Mr. Moonman said that there was deep-felt concern in his constituency and throughout the country at the lack of quantity and quality of information.

How could the service be improved if the Ministry did not have the basic information?

Mr. Robinson replied that it was hoped a computer just installed at Fleetwood for processing mental health statistics would speed up the transmission of information.



Representing the "Basildon, Billericay and Wickford Standard," Mr. R. Jeffries presents the 2nd Wickford Cub-Scouts with the plaque given by the newspaper to the Billericay and District Local Association "Cuborama" last year. The 2nd Wickford have won the plaque for the first time for the best log book for jubilee year. They will defend it every month.

Cross-country races

SUCCESSES FOR
BILLERICAY
AND LAINDON

TWO SECONDARY school teams, Laindon and Billericay, dominated the Basildon schools' cross-country races held at Laindon on Saturday.

Good run
by Palmer

BASILDON'S Richard Palmer came 2nd in a massive field of 250 in the Southern Counties junior cross-country championship at Parliament Hill on Saturday.

He ran past him in line for County honours but it will not be known whether he is in the Essex side for the inter-counties race in March.

The doubt exists because five Essex runners finished ahead of him, but he was not included in the Essex team.

The junior race was won by Colin Hanson of Woodford Green with another Essex lad, Abrahams, in second place.

In the senior race which attracted 600 entrants, Basildon finished only two runners, G. Knibb came 22nd and Tom Birch 33rd.

On Saturday Basildon took part in the last S.E. Essex League race of the season at Southend.

No shocks
in table
tennis K.O.

NO SHOCKS in the Basildon and District table tennis championship so far. There were no league matches last week, only the early rounds of the championships, and for the first time in many years no seeded players in the men's singles were beaten.

Joan Hand (née Blythe), many times winner of the ladies' singles, came back providing the shock of the day. She had a tremendous struggle against Southern champion Iry Baker before coming through 17-21, 21-16, 21-19.

She will face Brenda Jones, who was not extended in her half of the draw, in the final of the ladies' singles.

In the men's singles, Keith Murray was taken out by tonsillitis, and Stan Dyson takes his place in the quarter finals.

The rest of the seeds came through and the quarter final draw is as follows:

Mick Pond v Hugh Molloy; Rich Mellings v Mick Watts; John Blackman v Fred Lockwood; Stan Dyson v Harry Gwent.

Last Saturday Rich Mellings retained the Southern title by beating Gwent in very convincing fashion.

The men's doubles, ladies' singles and ladies' doubles finals will all be repeats of last year. Lockwood and Gwent were not unduly troubled in their half of the draw.

Finals night is Saturday, March 4th, at Ilford. This evening's play is a must for anyone who enjoys table tennis.

Thames-side
results

Thurrock Thames-side Combination last Saturday:

Premier Div.: Onglet O.B. 1, Stamford 1, Armada 3, Riverside 2, Orsett 2, Oakdale 1, Horndon 1, Oakerford 2, Park Youth 1, Duxon 3, Tilbury C.C. 2, P.L.A. 0, Rainham Youth 1.

Div. I: Tilbury Youth 3, Tilbury C.C. Res. 2, All Saints 2, Reserves 0, Park Youth 2, Frobisher and Gamble 2, Corringham and Fobbing Res. 0, Armada Res. 0, Orsett O.B. Res. 1, Tilbury Ath. 3, Stamford Youth 2, Horndon Res. 0, Tunnel Sports 2.

Tomorrow's fixtures, k.o. 3 p.m., seventh round Essex Junior Cup: Orsett Athletic v Ilford Rovers.

Premier Div.: Corringham and Fobbing v Park Youth, Stamford v Oakdale, Horndon v Armada, Riverside v Duxon, Tilbury C.C. v Orsett O.B., Rainham Youth v P.L.A.

Division I: Tilbury Youth v Frobisher and Gamble, Armada Youth v Tilbury C.C. Res., Orsett O.B. Res. v Corringham and Fobbing Res., Rainham Youth Res. v Tilbury Ath., Stamford Youth v Horndon Res., P.L.A. Res. v All Saints.

Billericay overwhelmed their opponents in the Junior Race, totalling under half as many points as second-placed Fryerns, while Laindon did the same in the Intermediate Race, scoring 46 points while Fryerns, again in second place, totalled 58.

In the Senior Race, Fryerns supplied the opposition. The other schools all withdrew their entries and the Fryerns boys raced among themselves for first and second places.

For first and second places, the club in dates. At the same time as the cross-country races were being played at Craylands and Billericay, and these obviously drew many potential runners.

There were more than enough runners in the Junior Race, however, for 70 boys strewn over 11 laps of the course which had been marked out in the fields behind Laindon Secondary School. First home was Michael Walden of Billericay, 14 seconds in front of Gordon Hulbert of Craylands.

The Billericay boy was followed home closely by his five team-mates, all of the crowd which had been obvious in the fields behind the school.

In the Intermediate Race there were fewer starters, a little over 40, and the Laindon runners quickly worked their way through to the front. They raced home in first place, Hunt took third position, and the rest of the team were soon in for a total of 46. Their other four runners were Ainger, McCallion, Howey and Herbert.

Finally came the Senior Race over 31 laps, and the six Fryerns boys, Layzell, Webster, Skeet, Stansell and Wilson lined up at the start, but from the eight other Secondary Schools who had entered the previous competitions, there was not a single entrant.

Layzell won fairly comfortably from Skeet in 31 min. 11 sec.

Results
Junior—1, Michael Walden (Billericay) 14 mins. 59 sec.; 2, Gordon Hulbert (Craylands); 3, Oliver Cavignoli (Fryerns).

Team positions—1, Billericay "A" 43; 2, Fryerns 98; 3, Craylands 125; 4, Billericay "B" 185; 5, Laindon "A" 195; 6, Chelvedon 203; 7, Timbertop 209; 8, Barstable 213; 9, Laindon "B" 266.

Intermediate—1, G. Jeffrey (Laindon) 20 mins. 26 sec.; 2, Ceter (Timbertop); 3, Hunt (Laindon). Team positions—1, Laindon 46; 2, Fryerns 88; 3, Billericay 134; 4, Billericay "B" 153.

Senior—1, R. Layzell (Fryerns) 31 mins. 11 sec.; 2, P. Skeet (Fryerns).

Big win for
Covenanters

LAINDON COVENANTERS 8, LANGDON HILLS METHODISTS 0.

LAINDON COVENANTERS repeated their win of last year when they entertained Langdon Hills on Saturday, running up a 3-0 lead by the interval, and going on to win 8-0.

Two goals by Collin and one by Palmer made up the half-time score, and the second half the scorers were Ougham (2), Maddocks, Jones and Palmer.

Despite the score, the match was not one-sided, and the Methodists managed to launch several attacks, but Scurrell in the Covenanters goal, aided by backs Jones and Maddocks, managed to deal capably with all their efforts.



Entrants for the junior section of the Basildon secondary schools' cross-country race seen grouped before the start of the run at the Laindon Secondary School on Saturday.

Hockey

Billericay
beaten in
local Derby

BASILDON LADIES 2, BILLERICAY LADIES 0.

BASILDON LADIES came out victorious in their local derby with 10-player Billericay in an entertaining hockey tussle at Mopias Park on Saturday.

Basildon forced the pace from the start but Billericay's defence—the strongest part of their side—repeatedly repelled the raids.

The pattern of the first half was quick attacks at both ends but the teams came in for the break with the scoreless tie blank.

In the second half Maureen Ames, Basildon's centre forward, put her side in front by pushing the ball over the line after a skirmish in the Billericay circle.

She also scored the second goal shortly afterwards, following a corner.

Billericay was not allowed to reply as the Basildon defence was at its best, turning defence into attack with excellent anticipation and skilful teamwork.

Right back Janet Metcalfe was in exceptional form for Basildon, and often tore between the Billericay forwards to collect the ball and urge her forwards into the attack.

Marion Love and Joan Simpson commanded the left side of the field with reliable tactical play.

Basildon: Joan Simpson, Janet Metcalfe, Joan Simpson, Ruth Carter, Judy Boothman, Marion Love, Ginny Pateman, Margaret Southcott, Maureen Ames, Monica Munro, Diana Bowden.

Basildon are at home to Southend and the second team away at Burnham.

CALENDAR APPROVED
THE FIRST tee at Basildon's new golf course will be closed 72 times for up to two hours for competitions and club matches this year.

The calendar submitted by the Golf Club was approved for a trial period by the Council's Recreation Committee last week.

The Council are insisting that all week-end competitions start at 9 a.m.

Barstable girls triumph in the
gymnastic
championships

FOR THREE years running the Basildon senior girls' gymnastics have developed into a duel between Barstable and Woodlands Schools. This year's championships were no exception. Barstable succeeded in turning an early marginal lead into a decisive victory.

Woodlands "A" and "B" teams were joint runners-up. Individual champion once again was 15-year-old Pam Brown, the Barstable girl who has wanted to become a P.E. teacher for as long as she can remember.

Pam, from Cromwell Gardens, Pitsea, won the Junior gymnastics title for two years before taking the senior sword last year.

Swimming, trampolining, netball, volleyball, athletics, Pam was in for all of them, and fills in her spare time by watching football. She is keen Hammers fan and often goes to Upton Park to see them play.

Pam scored 501 points to keep her Barstable team-mate Mary Evans in second place, with 471 points. Rosemary Park, of Woodlands "A", came third with 461.

Good crowd
If Pam's victory was no surprise, the attendance figures certainly were. About 100 people craned into a small enclosure at the end of the gym to see Barstable's home-ground victory. Many stood for the entire three-hour programme.

Balance and rotation were the themes chosen for this year's competition. The fourth senior school championships to be held in Basildon.

The floorwork produced some interesting roll and somersault techniques, but few contestants brought to much imagination to bear on the second section, where double bars were the compulsory apparatus.

Judges, Miss J. Parr, of Westcliff and Miss D. Giller, of Brentwood, gave Barstable 187 points, Woodlands "A" 174, and Woodlands "B" 171. Wickford 145, Fryerns 130, and Timbertop 138 points.

Thirty-two girls took part. Pam Brown, Margaret White, Mary Evans and Janet Sargent formed the winning team, trained by Miss Marion Love. They had been working toward the championships since October.

Mr. G. Whitehead presented the prizes. "I always feel a bit of a fraud doing this," he said. "I couldn't compete with anything the girls have done this evening."

The Saints have been beaten by Hassenbrook earlier in the season, who in turn have been beaten by Shell. The Saints in fact only lead the division by virtue of having played more games, and the signs point to a great climax to the season.

The relegation spot in Division I looks to be between T.B.M. and Lathol.

In Division II, Telk... head the table with five wins from six games, and S.T.C. in second place, have lost twice, but to Telk... The Saints's toughest challenge appears to be from Hassenbrook II, who have so far won three of their four games.

Ford's look booked for promotion in their first season in Division II. They have won seven out of the eight games played, and their only defeat appears to be Wickford who have so far played only three games. They will have to defeat Ford in their second match to produce an exciting finish.

In Mixed Division I Stork are the only club with a 100 per cent record, and it looks as if promotion will ensue in their championship. They have already defeated second team Craylands in the works.

The Saints' home court, and they are not likely to allow the Craylands to reverse the result in the return match.

Shell could, however, throw a big spanner in the works. If they field both their guest county players, David Fosh and Brian Knapp they could easily defeat both the top two teams.

Going up!
S.T.C. look booked for Division I of the Mixed League next year. They easily head Division II, and have dropped only one game out of 54 while winning their six matches. They have yet to play Stork II, however, and this is likely to prove the vital game.

Stork II have quite a task ahead of them if they wish to gain promotion. They have to beat S.T.C. twice, and win the return match with W.W. Bol who have won 6-3 earlier in the season.

Finally, the Ladies' Division. The Craylands Saints' first pair of Pat Farrow and Hazel Davis have won all the 12 games.

NETBALL

CRAYLANDS
CLASH WITH
WENTWORTH

GIRLS OF Craylands Secondary School had in their netball matches against Wentworth High School at Craylands on Monday, even though a cold biting wind and poor light made the same very difficult to play.

The Craylands 5th year team produced the best play of the day, coming right into form and beating their opponents in a most convincing manner, 10-4.

Other results were 4th Year, 7-9 to Wentworth; 2nd Year, 10-7 to Craylands; 2nd Year, 10-7; 1st Year 6-3 to Craylands.

BASILDON NETBALL League results:
Division II: Basildon Wanderers 22, Tilbury Y.C. 19.
Division III: C.S.C. "A" 19, Curriers 5; C.S.C. "B" 3, Chelvedon 26; S.T.C. 10, Shell 25.

Out-of-practice Craylands won one and lost two of their matches against Canvey Secondary School last week. Results: Third year—Canvey 12, Craylands 8; 2nd year—Craylands 10, Canvey 8; 1st year—Craylands 15, Craylands 8.

HASSENBROOK CHASE
THE SAINTS FOR
BADMINTON TITLE

CRAYLANDS SAINTS, champions of Division I of the Basildon Badminton League for the past two years, are once again heading the league this season, but their position is by

they have played and only by losing their four remaining games and T.B.M. winning their last six. The Saints will be deprived of the championship. The other four teams are taken in it in terms to beat each other, and it is difficult at the moment to forecast any eventual order.

Positions

MEN'S DIVISION I

	W	L	F	A	P
Craylands Saints	5	1	1	1	3
Hassenbrook	4	1	1	1	3
Stork	3	2	1	1	3
Shell	3	2	1	1	3
Marconi	2	4	1	1	3
T.B.M.	0	5	0	0	0
Lathol	0	5	0	0	0

MEN'S DIVISION II

	W	L	F	A	P
S.T.C.	5	1	1	1	3
W.W. Bol	4	1	1	1	3
Hassenbrook II	3	2	1	1	3
Stork	3	2	1	1	3
Benalack	2	4	1	1	3
Tablers	0	5	0	0	0

MEN'S DIVISION III

	W	L	F	A	P
Ford's	7	1	1	1	7
S.T.C. II	5	1	1	1	7
Wickford	3	2	1	1	7
Ilford	2	4	1	1	7
Tilbury Gen. Stm.	1	6	1	1	7

MIXED DIVISION

	W	L	F	A	P
Stork	4	0	0	0	4
Craylands Saints	4	0	0	0	4
Shell	3	2	1	1	7
T.B.M.	0	5	0	0	0

MIXED DIVISION II

	W	L	F	A	P
S.T.C.	6	0	0	0	6
W.W. Bol	4	1	1	1	6
Stork II	3	2	1	1	6
Curriers	3	2	1	1	6
Ilford	0	5	0	0	0

LADIES' DIVISION

	W	L	F	A	P
Saints "A"	12	0	252	115	12
Saints "C"	4	1	168	215	4
Saints "B"	3	1	178	215	3
S.T.C.	3	1	182	237	3

EASY FOR
ISLANDERSCANVEY BOYS II,
BASILDON BOYS

CANVEY BOYS made sure of a place in the Basildon Youth League Cup Final when they easily beat Basildon Boys on Saturday to give them an aggregate score of 16-6.

Apart for about 10 minutes, when Basildon were unlucky to have goals disallowed, Canvey dominated the game and led 3-0 at half time.



Barstable (seated), winners of the Basildon Schools' Sports Association Senior Girls' Gymnastic Trophy, pictured with joint runners-up Woodlands "A" and "B" teams at Barstable School.



I'M NOT WORRIED!! —IT WAS HIS FAULT

It won't be my 60th. No Claim Bonus!

The "Vehicle & General" do not operate the Knock for Knock system. If you are involved in an accident through no fault of your own and full recovery is made from the other motorist, your No Claim Bonus remains intact. If, on the other hand, the accident was your own fault, you are all golly of the occasional momentary carelessness) your No Claim Bonus is merely reduced. — To 50% if you were enjoying 60% or to 25% if you had previously reached only 50%.

With the "V. and G." you get your bigger No Claim Bonus even quicker:

55% after only three years and
60% after only four years' accident-free driving.

Can you honestly think of a fairer system for Motor Insurance?

R.A. BUTT
CO. LTD
Insurance and Mortgages Brokers
5 NETHER PRIORS, BASILDON Phone: 21651

WESTON'S OF WICKFORD
Storage **REMOVALS** Transport
62 HIGH STREET, WICKFORD Telephone 3392

THE BENDER SCHOOL OF MOTORING
Telephone: Basildon 20171

NOW OFFER YOU
The Largest Selection of Dual-Controlled Cars in the area
FORD CORTINAS, FORD ANGLAS, MORRIS 1100S, AUSTIN 1100S, MORRIS MINIS, VAUXHALL VIVAS

LEARN TO DRIVE IN THE CAR OF YOUR CHOICE
We have R.A.C. Registered Instructors — Members of the Institute of Advanced Motorists — under the supervision of MR. R. BENDER (M.O.T. Approved Instructor)
BOOK WHERE YOU SEE THE BENDER SCHOOL OF MOTORING SIGNS

FRANCIS & JAGGER LTD.
FOR EXPERIENCED
REMOVALS & STORAGE
HIGH STREET, BILLERICAY — Billericay 1050
ANY DISTANCE HIGH ROAD LANGLAND HILLS Phone: London 3378

Super Portable Car Radio
to be won!
worth **£21.5.11**



FREE 'Tyre Safety' Competition.
Enter now!

Here is a wonderful opportunity to win this valuable prize. Enter our FREE TYRE SAFETY competition and test your skill. All you have to do is to place eight tyre safety features in order of importance and write a safety slogan. Don't miss this chance—enter now. **WE STOCK AND RECOMMEND TYRES BY GOOD YEAR**

HENSMANS
J. P. HENSMANS LIMITED
HIGH STREET • BILLERICAY
Telephone: BILLERICAY 78
Come to us for FREE Entry Forms and the best tyre service in town.

Fryerns get point at Rochford

ROCHFORD 1.
FRYERNS AREA 1

IN IDEAL conditions at Rochford on Saturday where the Basildon boys found it strange to play without mud, Fryerns Area came home with a narrow victory against near rivals Standard Tele.

Fryerns were forced to make late changes to their side when centre-half Hawkins went down with flu. Hockley took over the position and Darroch was recruited from the reserves.

While Fryerns were settling down, Hockley proved a rare stumbling block and his great work helped keep Rochford out until the 35th minute of the first half when the only goal of the first half was scored.

The second half belonged to Fryerns. They threw everything at Rochford and after equalising through Dunn in the 53rd minute, went all out for the winner. But in the end they had to be content with a point.

FOUR-GOAL DEBUT BY KELLY

FRYERNS (BASILDON) 7.
HOCKLEY & HAWKSWELL 1

FOUR GOALS in his debut made this Southern and District League match a triumph for Fryerns' centre-forward Kelly on Saturday.

Taking control from the start with some workmanlike soccer, Fryerns went ahead in the 14th minute when Morgan hit in a hard shot which struck a defender on its way into the net.

Within a space of five minutes Kelly had added two more, the first after good work by Wells and the second with a first-time drive. Hockley came more into the game after this as the pace slackened slightly and just before half-time reduced the arrears following some good mid-field play.

A few minutes later Fryerns replied from a penalty taken by Morgan.

Fryerns came out attacking strongly in the second half and were rewarded with two fine goals in 10 minutes by Wells and Kelly, both of which followed good attacking play by full-back Gavett.

In the 74th minute Kelly accepted a good pass from Holgrove to complete the scoring in a game which was far more entertaining than the score suggests.

DOUBLE FOR LAINDON

HOCKLEY & HAWKSWELL 1.
LAINDON UNITED 2

LAINDON UNITED completed the Southern and District League double over Hockley and Hawkswell by winning 2-1, the same as the previous encounter — at Hockley on Saturday.

In a goalless first half both sides had their attacking moments and chances. Laindon went closest in this half when, from a free-kick just outside the box, Cooke's drive hit the crossbar and was scrambled away.

When Hockley did attack, Hamlyn, in the Laindon goal, looked in great form and was hardly ever in danger of being beaten. In the second half Laindon opened the scoring from a penalty taken by H. Payne after an infringement in a breakaway.

Hockley attacked at once in a bid to set on terms. Two good shots sailed over the bar and another was well saved by Hamlyn for a corner which was also out behind.

At the other end a good cross from S. Payne was well held by the home goalkeeper, but shortly afterwards the well beaten with a powerful drive by Whitmore which made it 2-0.

Whitmore had a chance to put Laindon further ahead, but he shot straight at the goalkeeper. In the 77th minute Hockley came back into the game with a shot from 30 yards through their centre-forward, and they then tried hard to get another, but Hamlyn was not beaten again.

Suspended

R. Parsons (Wickford Town) was suspended for 14 days as from February 20th and fined £1 by an Essex County F.A. Commission this week.

It was a sad end to an otherwise brilliant match.

YOUTH CENTRELOSE IN EXTRA TIME

Gunnors (Plaistow) 3, Wickford Y.C. 2 (after extra time)

TO TAKE an Arsenal junior side to extra time away from home was a good performance by Wickford Youth Centre on Saturday, but in the end they succumbed to the Plaistow boys in this fifth round

Playing with two reserves—Bishop to goal and Stuart on the wing—Wickford were unlucky to kick in the first half, several of their shots hitting the bar and other efforts going near.

At the other end the Gunnors took their chances and were 2-0 up at the break. It could have been far worse for Wickford had not Bishop and Graham Wright started in defence.

The second half saw Wickford attacking strongly and in the 20th

GOAL CAME AWAY game for Wickford

WICKFORD TOWN Res. 1, Standard Telephones 0

WICKFORD TOWN Reserves took a faltering step nearer the Southern and District League Second Division title on Saturday when they gained a narrow victory against near rivals Standard Tele.

phones, thanks to a Benning goal from a penalty.

A goalless first half saw the visitors more than holding their own and their crisp, clean passing movements could easily have brought them some reward, but for stern defensive work with Foulton, Wood and Runnall out-standing.

The Town forwards seemed unable to click and poor passing caused promising moves to break down. After the interval, the visitors continued to press, but Town gradually found their feet and a breakaway attack they took an unexpected lead.

Without put a nice ball through to Benning and he chipped the ball on for Hope to head forwards, only to be his effort stopped by a handling offence from a full-back.

Benning made no mistake from the spot kick, however, and Town stole two valuable points.

TWO SENT OFF IN ANDREWS CUP-TIE

FRYERNS BOYS' CLUB 3.
BECONTREE HEATH 2

FRYERNS BOYS' CLUB are through to the semi-finals of the Essex Andrews Cup. They beat Becontree Heath 3-2 in a game which had everything excepted of a cup-tie — thrills, tension and a few fouls.

The only blot came three minutes from the end when Fryerns' Dedman — who had been sent off for fouling the Heath forwards — and Becontree's Wheeler were sent off for fouling.

With 12 goals for and none against before the start, Fryerns started off full of confidence, but after a few minutes it was quite clear the Becontree attack would take some holding.

They swung the ball about to open up the defence and Fryerns were in trouble on the muddy pitch.

In the 12th minute Becontree took the lead as a long ball by Wassmuth being crashed past the helpless keeper by Seeger.

This goal shook Fryerns into something like their senses and they made a long ball by Hecke, May and Toulton. Diver had a shot saved when a pass to Kelly would have done the trick, and shortly afterwards Diver hit the crossbar.

Penalty

Fryerns were on top by now and Becontree had to give away a series of corners to stem the tide. From one Hunt, who had not seen much of the ball, was brought down and the penalty May equalised.

Play after this swung from end to end. Becontree had a brilliant save for Fryerns from keeper and at the other end the Becontree goalkeeper did well to smother the ball at the expense of a knock on the leg of Diver.

Just before half-time Becontree went ahead again, Wassmuth hitting the dummy to the defence and sending the ball through for Diver to beat the goalkeeper.

The second half was only five minutes old when Fryerns' Dedman was sent off for fouling three men and fired in a shot which the goalkeeper never saw for a brilliant Fryerns equaliser.

Five minutes later a determined Toulton won back the ball in a tackle and slipped it to Diver, who went through to make it 3-2 for Fryerns.

Play deteriorated after this as tempers became frayed and who had previously been booked, and Fryerns' Dedman was sent off.

It was a sad end to an otherwise brilliant match.

Last-minute equaliser

SOUTHWOLD 3.
WICKFORD III 3

TWICE BEHIND after having an early lead out back, Southwold equalised in the dying seconds to share the points in this District League Division III game on Saturday.

Shinn shot Southwold into the lead after 10 minutes, but the visitors not only equalised practically straight from the kick-off, but went in front before the interval.

Stroud put the teams level again midway through the second half, but the equality was short-lived as Wickford went in front again almost immediately.

Following a free-kick right on the final whistle, Shinn hit home the equaliser.

E.B.H. results

ESSEX BUSINESS Houses League results:—

Premier Division: Gun — Lathol 2, Becontree 3; Bata 3, L.E.S.S.A. 2; Warnes 2, Hoffmann 1.

Premier League: Dagenham Canaries 2, P.L.A. 2; Dagenham Dock 2; Pegasus 1, Darnley 1; East-Crompton 1, Parkinson 0; Shell 3, Marconi 1; Fouda 3; Enfield Electric 3, S.E. Waterworks 1.

Division 1 West: Mford, Ltd. 5, Romford Brew 5; May and Baker 6, Ford (Basildon) 1; Green and Silley Weir 2, Ford United 0.

Supplementary Cup — Esso 1, Stork 0.

Reserve Section "A": Dagenham Canaries 7, Warnes 0; Bata 3, Pegasus 0; P.L.A. 5, Green and Silley Weir 0.

Reserve Section "B" Cup: Thames Boat Mills 0, Dagenham Dock 1; Stork Crompton 1, Parkinson 1; Mford, Ltd. 0.

Reserve Section "B" League: P.L.A. 3, Marconi 1; Telex 7, Kelvin Hughes 0.

Basildon reach semi-finals of the Welsh Shield

Basildon Schools 5, Chelmsford Schools 0

BASILDON'S "RED DEVILS" stormed through to the Welsh Shield semi-finals by crushing Chelmsford with a refreshing feat of attacking soccer at Craylands on Saturday.

After Basildon had taken the lead through Wheatley who screwed home a shot after the goalkeeper had dropped a high ball in the sixth minute, there was never a real doubt about the result.

A Great Basildon half-back, the Exeterington Carrigan took a number of superb saves, and Outram completely blotted out the Chelmsford attack.

With right-winger Langtree sending over some superb crosses, Chelmsford were hard pressed to keep out the Basildon boys after the early goal.

In the end Basildon had netted five, but it could have been more if the Chelmsford goalkeeper, Croucher, had not pulled off a number of superb saves.

With right-winger Langtree sending over some superb crosses, Chelmsford were hard pressed to keep out the Basildon boys after the early goal.

In the end Basildon had netted five, but it could have been more if the Chelmsford goalkeeper, Croucher, had not pulled off a number of superb saves.

With right-winger Langtree sending over some superb crosses, Chelmsford were hard pressed to keep out the Basildon boys after the early goal.

In the end Basildon had netted five, but it could have been more if the Chelmsford goalkeeper, Croucher, had not pulled off a number of superb saves.

With right-winger Langtree sending over some superb crosses, Chelmsford were hard pressed to keep out the Basildon boys after the early goal.

In the end Basildon had netted five, but it could have been more if the Chelmsford goalkeeper, Croucher, had not pulled off a number of superb saves.

With right-winger Langtree sending over some superb crosses, Chelmsford were hard pressed to keep out the Basildon boys after the early goal.

In the end Basildon had netted five, but it could have been more if the Chelmsford goalkeeper, Croucher, had not pulled off a number of superb saves.

With right-winger Langtree sending over some superb crosses, Chelmsford were hard pressed to keep out the Basildon boys after the early goal.

In the end Basildon had netted five, but it could have been more if the Chelmsford goalkeeper, Croucher, had not pulled off a number of superb saves.

LEAGUE TABLES

PREMIER DIVISION

CL	W	D	L	F	A	P
Basildon	10	2	0	24	10	22
Basildon Res.	10	2	0	24	10	22
Basildon III	10	2	0	24	10	22
Basildon IV	10	2	0	24	10	22
Basildon V	10	2	0	24	10	22
Basildon VI	10	2	0	24	10	22
Basildon VII	10	2	0	24	10	22
Basildon VIII	10	2	0	24	10	22
Basildon IX	10	2	0	24	10	22
Basildon X	10	2	0	24	10	22

CL	W	D	L	F	A	P
Basildon	10	2	0	24	10	22
Basildon Res.	10	2	0	24	10	22
Basildon III	10	2	0	24	10	22
Basildon IV	10	2	0	24	10	22
Basildon V	10	2	0	24	10	22
Basildon VI	10	2	0	24	10	22
Basildon VII	10	2	0	24	10	22
Basildon VIII	10	2	0	24	10	22
Basildon IX	10	2	0	24	10	22
Basildon X	10	2	0	24	10	22

CL	W	D	L	F	A	P
Basildon	10	2	0	24	10	22
Basildon Res.	10	2	0	24	10	22
Basildon III	10	2	0	24	10	22
Basildon IV	10	2	0	24	10	22
Basildon V	10	2	0	24	10	22
Basildon VI	10	2	0	24	10	22
Basildon VII	10	2	0	24	10	22
Basildon VIII	10	2	0	24	10	22
Basildon IX	10	2	0	24	10	22
Basildon X	10	2	0	24	10	22

CL	W	D	L	F	A	P
Basildon	10	2	0	24	10	22
Basildon Res.	10	2	0	24	10	22
Basildon III	10	2	0	24	10	22
Basildon IV	10	2	0	24	10	22
Basildon V	10	2	0	24	10	22
Basildon VI	10	2	0	24	10	22
Basildon VII	10	2	0	24	10	22
Basildon VIII	10	2	0	24	10	22
Basildon IX	10	2	0	24	10	22
Basildon X	10	2	0	24	10	22

CL	W	D	L	F	A	P
Basildon	10	2	0	24	10	22
Basildon Res.	10	2	0	24	10	22
Basildon III	10	2	0	24	10	22
Basildon IV	10	2	0	24	10	22
Basildon V	10	2	0	24	10	22
Basildon VI	10	2	0	24	10	22
Basildon VII	10	2	0	24	10	22
Basildon VIII	10	2	0	24	10	22
Basildon IX	10	2	0	24	10	22
Basildon X	10	2	0	24	10	22

CL	W	D	L	F	A	P
Basildon	10	2	0	24	10	22
Basildon Res.	10	2	0	24	10	22
Basildon III	10	2	0	24	10	22
Basildon IV	10	2	0	24	10	22
Basildon V	10	2	0	24	10	22
Basildon VI	10	2	0	24	10	22
Basildon VII	10	2	0	24	10	22
Basildon VIII	10	2	0	24	10	22
Basildon IX	10	2	0	24	10	22
Basildon X	10	2	0	24	10	22

CL	W	D	L	F	A	P
Basildon	10	2	0	24	10	22
Basildon Res.	10	2	0	24	10	22
Basildon III	10	2	0	24	10	22
Basildon IV	10	2	0	24	10	22
Basildon V	10	2	0	24	10	22
Basildon VI	10	2	0	24	10	22
Basildon VII	10	2	0	24	10	22
Basildon VIII	10	2	0	24	10	22
Basildon IX	10	2	0	24	10	22
Basildon X	10	2	0	24	10	22

DIVISION I		W	D	L	F	A	P
Hadleigh	Ath.	9	2	0	46	15	23
Laindon H.	Utd.	10	0	3	36	21	23
Wickford	Town	8	2	2	40	23	18
Rayleigh	Ama.	6	2	1	34	14	

PUBLIC NOTICES

BASILDON DEVELOPMENT CORPORATION
CHIEF ENGINEER'S
DEPARTMENT
NEVENSON TREATMENT
WORKS
CLERK STORE-KEEPER
APPLICATIONS ARE INVITED
for the supernumerary post of
the staff of the Chief Engineer's
Department on Clerical 1
Grade (salary range £720-£935
per annum).

The candidate appointed will be required to do general clerical duties, including short-hand and typing, and issue stores and keep stores records for the Treatment Works under the direction of the Manager of the Works. Experience with a machine system of store-keeping will be an advantage. The appointment is supernumerary and subject to one month's notice on either side.

Applications giving age, marital status, qualification, and experience, together with the names and addresses of two technical referees, should be sent to the General Manager, Basildon Development Corporation, Cliff House, Basildon, Essex, not later than Monday, 27th February, 1967.

BASILDON DEVELOPMENT CORPORATION
CHIEF ENGINEER'S
DEPARTMENT

APPLICATIONS ARE INVITED for the supernumerary post of three Candidates should be neat, expeditious draughtsmen / women with previous experience, preferably in an engineer's or architect's office.

The appointment will be in the General Division of the Corporation's salary scales (£245-£725 per annum). Starting salary within the scale will be in accordance with age and experience.

Applications stating age, qualifications, experience and posts held to date, also the names and addresses of two referees, should be sent to the General Manager, Basildon Development Corporation, Cliff House, Basildon, Essex, by first post on Monday, March 6th, 1967.

BASILDON DEVELOPMENT CORPORATION
CHIEF ENGINEER'S
DEPARTMENT

APPLICATIONS ARE INVITED for the supernumerary post of three Candidates should be neat, expeditious draughtsmen / women with previous experience, preferably in an engineer's or architect's office.

The appointment will be in the General Division of the Corporation's salary scales (£245-£725 per annum). Starting salary within the scale will be in accordance with age and experience.

Applications stating age, qualifications, experience and posts held to date, also the names and addresses of two referees, should be sent to the General Manager, Basildon Development Corporation, Cliff House, Basildon, Essex, by first post on Monday, March 6th, 1967.

URBAN DISTRICT COUNCIL OF BASILDON
TOWN AND COUNTRY
PLANNING ACT, 1962

APPLICATION FOR APPROVAL to detailed plans for the following development has been received:

BILLERICAY
Erection of 46 dwellings and garages at Home Meadow, off The Avenue and "Covey Nook", The Avenue and construction of a new street, providing for the connecting of The Avenue and West Park Avenue.

Outgoing planning permission has already been granted for the residential development of the site, subject to about one acre of Home Meadow being set aside as a children's play area.

The scheme proposes the diversion of public footpaths Nos. 7 and 8 at present running through the site, and the closure to vehicles of that part of West Park Avenue in front of Nos. 45-48 (inclusive), with alternative access to these properties from a new cul-de-sac.

A copy of the application and accompanying plans may be inspected during office hours in the Engineer and Surveyors' Department, 88, Town Square, Basildon, or prior arrangement outside office hours, Mondays to Fridays.

Any representations, to be made in writing, must reach me by 1st March, 1967.

DAVID H. TAYLOR
Town Manager and
Clerk of the Council.
Council Offices,
88, Town Square,
Basildon, Essex.

GEORGE WILLIAM JONES deceased. Pursuant to the will of 1955—ANY PERSON claiming an interest in the Estate of GEORGE WILLIAM JONES deceased late of 120 RECTORY ROAD PITSEA BASILDON in the COUNTY OF ESSEX who died on the 12th day of August 1955, and whose will was proved by the Executors thereof named on the 28th day of October 1955, IS REQUIRED TO SEND PARTICULARS THEREOF IN WRITING TO THE UNDERSIGNED SOLICITORS ON OR BEFORE THE 21st DAY OF APRIL 1967, after which date the Executors will proceed to distribute the assets having regard only to claims and interests of which they have had notice.

Dated this 8th day of February, 1967.

SMITH & HARRISON
39, Eleanor Cross Road,
Waltham Cross, Herts.
Solicitors for the Executors.

SETBACK TO OUTWOOD'S HOPES OF GAINING PROMOTION

Westlea 1, Outwood Common 0. Outwood dropped two more points in their bid for promotion from the Mid-Essex League Division II on Saturday, and afterwards Manager Reg Foster commented: "On this showing we don't deserve to go up. The forwards have forgotten how to shoot. They tried to walk the ball into the net and all they did was keep the Westlea keeper warm. He

wasn't extended all afternoon."

Outwood failed once again to recapture the form which made them promotion candidates at the beginning of the season.

They fell a goal behind after 20 minutes while their defence stood appealing for offside and never looked like pulling the point back, let alone taking both.

Gramming their goal-mouth with a packed no-

nonsense defence which blunted every Outwood attack until the final whistle to average a 6-2 defeat at the beginning of the season.

Their own attack was dangerous in break-away raids, but was well held by the Outwood defence, in which Mick Catmull, at left-back, was outstanding.

Sturdy in defence, he also made himself space for several dangerous sorties up the left wing.

Youth Centre surprise Thaxted XI

BILLERICAY Y.C. 3, THAXTED 0.

AFFLICTED by team troubles, Thaxted XI had to postpone their visit to Billericay Youth Centre for a Chelmsford and Ipswich Combination Division II match on Saturday and a friendly against First Division Thaxted was arranged.

Thaxted will remember their first encounter with the Centre because the Second Division leaders were in championship form and beat them well and truly.

In the first 15 minutes both sides played good football without endangering the opposite goal, but Centre gradually took charge.

There was no score before the break, but after 55 minutes Centre took the lead through right-winger Ron Auld, and 20 minutes later Auld went forward again for his second after a blunder by the Thaxted defence.

Half-half Barry Savell underlined Centre's dominance with a brilliant 30-yard goal three minutes from time.

Centre were much the better side in the second half, laying siege to the Thaxted goal throughout.

Inside-forward Eddie Routledge had his best game of the season and the Centre half-back line of Savell, Bill Evans and Brian Adams was always constructive.

Fine crowd
Top crowd in the Football League last Saturday was the 62,127 who saw Manchester United beat Nottingham Forest 1-0.

MID-ESSEX FOOTBALL LEAGUE RESULTS

Mid-Essex Football League results last Saturday were:

Premier Division: Barnston 1, Hatfield 0; Fovell 3, Great Waltham 2; Fovell 2, Marcom Res. 5, Basildon, and Pitsea Res. 2.

Division I: Bowers United Res. 1, Southminster 1; Chelmsford Y.M.C.A. 10, Exiles 0; Galleywood 2, Burnham 1; Hambleton Res. 3, Horway 3; Uffing Villa 2, Ingatestone 0; Old Maldenians 2, Maldon S.C. 1; Mar's 2, Tillingham O.C. Res. 0; Moulsham Lodge 2.

Division II: Dunmow Res. 1, Contingents Res. 1; E.C.C. 2, Marcom "A" 1; Silver End Res. 4, Marcom "A" 2; Warren 2, Tollerbury 2; Stock United 1, Westlea 1; Outwood Common 0, Writtle Res. 0; Billericay Town "A" 1.

MID-ESSEX FOOTBALL LEAGUE

Premier Division positions:

	W	D	L	F	A	P
Park Avenue	13	0	7	19	21	31
Boreham	11	1	4	35	30	23
E.C.C. Staff	10	1	4	36	30	21
Waltham Fovell	10	1	3	58	27	20
Waltham	9	1	2	58	29	21
Barnston	7	3	5	26	17	17
Mildmay T.W.	7	0	8	55	48	14
Springfield	6	3	11	28	41	13
Marconi Res.	5	2	9	36	52	12
Gt. Baddow	5	1	7	29	24	11
Gt. Waltham	4	1	8	29	38	11
Bas. & Pit. Res.	2	1	8	20	14	5
Collier L. Res.	2	1	7	14	35	5
Fyfield	0	0	17	21	15	0

ILFORD'S KNOCKOUT

SHIPLEY GETS DOUBLE FIGURES

ILFORD SPORTS 0, YORK SHIPLEY 10

Shipley forced their way through the Ilford defence to score ten goals in the Basildon League match. The result was a record for the away team, with more goals scored in a single match than in any previous season.

Shipley made four changes, but the new team, which had won 20 goals in the previous season, were more than a match for the Ilford defence. The result was a record for the away team, with more goals scored in a single match than in any previous season.

Shipley were straight on the attack, and after nine minutes, the Ilford defence was in a state of confusion. The result was a record for the away team, with more goals scored in a single match than in any previous season.

Shipley pulled themselves together in the second half, and started to take their chances better. The result was a record for the away team, with more goals scored in a single match than in any previous season.

Shipley scored a goal for the rest of the match. The result was a record for the away team, with more goals scored in a single match than in any previous season.

Exciting clash ends in a draw

A DRAW was the only fair result to this hard-fought but sporting Basildon League Premier Division game. At no time did either side dominate for any length of time, and the ball always moved quickly from end to end.

Five minutes later Synott made another fine run and flicked the ball up on the keeper's head into the net, but the goal was disallowed as a colleague was offside.

Back came Dunton and 30 minutes from time they were on level terms again, the Dunton striker hitting the net with a fine shot into the top corner of the net.

For the remainder of the game both sides pressed desperately for the winner, but neither side was able to break through the other's defence.

At this stage Thorneby Bay's luck changed and they pulled back a goal in a breakaway, but Fryer was soon back at the goal and further goals by Shelton, Queen and Duncan finished it.

At this stage Thorneby Bay's luck changed and they pulled back a goal in a breakaway, but Fryer was soon back at the goal and further goals by Shelton, Queen and Duncan finished it.

THE IRISH

ILFORDS 0, IRISH CLUB 2

THE SEMI-FINAL of the Basildon League Premier Cup, played in near perfect conditions in Gloucester Park, lived up to all expectations, with both sides providing 90 minutes of fine, exciting football.

For the first 15 minutes Ilford were in command, putting the Irish defence under terrific pressure with a series of penetrating raids. Gradually, however, Carpenter and Bannon got control and the Irish took over.

Ilford's started the second half rather as they had done the first, making themselves several chances, but they were unable to score.

Ilford's started the second half rather as they had done the first, making themselves several chances, but they were unable to score.

Ilford's started the second half rather as they had done the first, making themselves several chances, but they were unable to score.

Ilford's started the second half rather as they had done the first, making themselves several chances, but they were unable to score.

Ilford's started the second half rather as they had done the first, making themselves several chances, but they were unable to score.

Ilford's started the second half rather as they had done the first, making themselves several chances, but they were unable to score.

Ilford's started the second half rather as they had done the first, making themselves several chances, but they were unable to score.

Ilford's started the second half rather as they had done the first, making themselves several chances, but they were unable to score.

Ilford's started the second half rather as they had done the first, making themselves several chances, but they were unable to score.

Ilford's started the second half rather as they had done the first, making themselves several chances, but they were unable to score.

Ilford's started the second half rather as they had done the first, making themselves several chances, but they were unable to score.

Ilford's started the second half rather as they had done the first, making themselves several chances, but they were unable to score.

Ilford's started the second half rather as they had done the first, making themselves several chances, but they were unable to score.

Ilford's started the second half rather as they had done the first, making themselves several chances, but they were unable to score.

Improved form by Bowers

COLLIER ROW 3, BOWERS UNITED 1

BOWERS UNITED were beaten 3-1 by Collier Row in an Essex Olympian League match on Saturday. They gave a better performance than at Bishop's Cleeve the previous week, but a goal in the first half was all that kept them in the game.

Collier Row's outside-left missed a good chance in the opening minutes and when play swung to the other end, Bowers' goalkeeper did well to save.

Bowers suffered the same fate for Collier Row had hit the crossbar.

This was the pattern of the early half, although Bowers just seemed to be getting on top when the half was originally won ahead in the 32nd minute, Levey going down too late to sign a low shot.

Collier Row started the second half in determined fashion and bombarded Bowers with a series of powerful shots.

Bowers weathered this storm and after ten minutes equalised when Bonning forced the ball into the net.

At this stage Bowers seemed to have the measure of the Collier Row defence, but a goal in the first half was all that kept them in the game.

Collier Row started the second half in determined fashion and bombarded Bowers with a series of powerful shots.

Bowers weathered this storm and after ten minutes equalised when Bonning forced the ball into the net.

At this stage Bowers seemed to have the measure of the Collier Row defence, but a goal in the first half was all that kept them in the game.

Collier Row started the second half in determined fashion and bombarded Bowers with a series of powerful shots.

Bowers weathered this storm and after ten minutes equalised when Bonning forced the ball into the net.

At this stage Bowers seemed to have the measure of the Collier Row defence, but a goal in the first half was all that kept them in the game.

Collier Row started the second half in determined fashion and bombarded Bowers with a series of powerful shots.

Bowers weathered this storm and after ten minutes equalised when Bonning forced the ball into the net.

At this stage Bowers seemed to have the measure of the Collier Row defence, but a goal in the first half was all that kept them in the game.

Collier Row started the second half in determined fashion and bombarded Bowers with a series of powerful shots.

Bowers weathered this storm and after ten minutes equalised when Bonning forced the ball into the net.

At this stage Bowers seemed to have the measure of the Collier Row defence, but a goal in the first half was all that kept them in the game.

Poor display by the Town

BILLERICAY TOWN 0, DORSET PRESS 4

AT THE end of this Essex Olympian League match at Laindon Road on Saturday the cleanest man on the field was the Dorset Press goalkeeper. In a display they will want to forget in a hurry, the Town forwards hardly gave him a shot worth a mention all afternoon.

Result was a disappointing and decisive reversal of a 1-1 drawn in a light-hearted game of improvement.

They were a goal down to the second - from bottom visitors - after only four minutes. Defender Tony Snell was dispossessed in front of goal and the Press centre-forward snatched the ball home.

After this Town weathered some lively Press attacks, but again a light-hearted game of improvement.

In the second half, frustrated by their inability to score, the home side gradually let the Press establish a firm grip on the match and could not shake it off.

After 55 minutes the visitors were further ahead when keeper Frank Munday failed to hold a ball cleanly and the right winger ran through to score with a great diving header.

Five minutes later the ball was allowed to run loose in the middle of the field, and the Press inside-left was given time to shoot for his centre-forward to make it three.

The match was decided around about when the Press marking allowed a right-left to run through and hit a great effort past Munday.

Town team: Munday; Anastasiou, Jones, Snell, Markham, Parsons, Wicks; Stratford, Frost, Hill, Wilson.

In the second half O.C.'s were a goal down to the same and the final score of 5-2 did not in any way reflect the quality of the game.

Despite dominating the play for the first half they could not pull back the goal scored by Dorset Press in the first few minutes.

In the second half Dorset Press gradually took control and added three more goals for a 4-0 win.

League Cup: Burnham Ramblers 0, Writtle 2.

League: Basildon and Pitsea Old Chelmsfordians 2, Billericay Town 0, Dorset Press 4, Collier Row 3, Bowers United 1, Essex Police 2, Bishop's Cleeve 1, Basildon 0, Basildon 0, Basildon 0.

League Cup: Burnham Ramblers 0, Writtle 2.

League: Basildon and Pitsea Old Chelmsfordians 2, Billericay Town 0, Dorset Press 4, Collier Row 3, Bowers United 1, Essex Police 2, Bishop's Cleeve 1, Basildon 0, Basildon 0, Basildon 0.

League Cup: Burnham Ramblers 0, Writtle 2.

League: Basildon and Pitsea Old Chelmsfordians 2, Billericay Town 0, Dorset Press 4, Collier Row 3, Bowers United 1, Essex Police 2, Bishop's Cleeve 1, Basildon 0, Basildon 0, Basildon 0.

League Cup: Burnham Ramblers 0, Writtle 2.

GUNNERS OUTPLAY OLD BOYS

BASILDON AND PITSEA 5, OLD CHELMSFORDIANS 2

GUNNERS CASHED in on their all-round superiority in this Essex Olympian League match to crash five goals past the Old Chelmsfordians' goalkeeper on Saturday.

The Basildon side had the right to start the match, keeping the ball away from the muddy centre of the field and out of the hands of the O.C.'s tried to break through the middle where they were soon brought to a halt by a combination of the mud and in-form Henry Beech.

For five minutes, play was quiet with Gunners building up gradual pressure, and the O.C.'s keeper was soon brought into action.

But it was the Old Boys who built into the lead when their centre-forward found the ball at his feet, and put them in the lead with a defence appealing for offside.

The Gunners went back into the attack in a more determined manner. Brankin headed the ball over the crossbar, then Staff made ground on the right, crossed the ball low through the defence, and players and Tony Holden went into the goal.

Two minutes later they were in the lead. Another long low cross was flicked home in similar fashion, this time by Jimmy Street to make it 2-1.

At the other end the Gunners conceded a silly corner, and the Old Boys' outside-left simply backed the ball into the goal, and it rolled through a packed defence past a bewildered Gavin into the net for the equaliser.

Basildon and Pitsea were quickly into their stride in the second half, and snatching up all the loose balls in his link role, and finding time to make themselves space.

Brankin with a stream of passes. The winner, in turn, surpassed the defence's crosses, some of which were, however, placed too far forward.

Goals were still hard to get. Holden was unlucky with a fine header which hit the bar, then Staff had a shot stopped by the defence, and another hit the bar.

Brankin had a shot well saved, before Staff headed the ball over the crossbar, and from the rebound Holden also hit the net.

All the pressure had to tell, and finally Eddie Brankin put the Gunners 4-2 up, coolly netting from a narrow angle.

The Old Boys were content to rely on defence, and their defence could not hold out under the pressure for the last 10 minutes.

The only other goal came minutes from the end when Brankin's cross was headed home a Staff corner.

SHOCK FOR ALL OLYMPIAN LEAGUE LEADERS

THE GREAT run by Essex Olympian Leaguers Little Waltham in the Essex Intermediate Cup ended on Saturday, when they were beaten 5-0 by Grays Athletic Reserves in the sixth round second replay.

The biggest shock of the League Cup occurred when bottom-of-the-table Writtle visited leaders Burnham Ramblers and won 3-0.

Burnham did most of the attacking, but Ramblers full-back, Keith his own goal in the second half, from this point Burnham threw everything into the attack, but Writtle defended for all they were worth until a long clearance led to a race for the ball which Austin won and duly put them two ahead. No matter how hard Burnham pressed they could not break down Writtle's 10-man defence.

Essex Police, at home to Bishop's Cleeve, were weakened by absentees and injury, but won a scrappy game 2-1. A goal by a penalty, Sainsbury, was the only goal in the game.

Collier Row had a good 3-1 win over Bowers United, for Collier Row's Bowers, who scored two goals, and keeper Fleetwood played very well. Story scored for Bowers.

In a game which suited for the Eton Wall game, Basildon and Pitsea defeated Old Chelmsfordians 2-1. Basildon took an early lead, but soon had it wiped out. After 25 minutes the half was over, and O.C.'s equalised from a breakaway, but before half-time Basildon regained the lead.

League Cup: Burnham Ramblers 0, Writtle 2.

League: Basildon and Pitsea Old Chelmsfordians 2, Billericay Town 0, Dorset Press 4, Collier Row 3, Bowers United 1, Essex Police 2, Bishop's Cleeve 1, Basildon 0, Basildon 0, Basildon 0.

League Cup: Burnham Ramblers 0, Writtle 2.

League: Basildon and Pitsea Old Chelmsfordians 2, Billericay Town 0, Dorset Press 4, Collier Row 3, Bowers United 1, Essex Police 2, Bishop's Cleeve 1, Basildon 0, Basildon 0, Basildon 0.

League Cup: Burnham Ramblers 0, Writtle 2.

League: Basildon and Pitsea Old Chelmsfordians 2, Billericay Town 0, Dorset Press 4, Collier Row 3, Bowers United 1, Essex Police 2, Bishop's Cleeve 1, Basildon 0, Basildon 0, Basildon 0.

GOAL ROUT STARTED IN SIXTH MINUTE

FRYERS BOYS' C.L. 14, THORNEY BAY 3

GOAL-RAMMY Fryers brought their tally to 38 in the last of their Basildon Youth League matches against Thorneby Bay on Saturday.

The goal rout started in the sixth minute when full-back, G. Worsley, from a 30-yarder against the crossbar and Captain made no mistake for the third.

After this, goals followed at regular intervals. In the 15th minute, Worsley pulled back a goal in a breakaway, but Fryer was soon back at the goal and further goals by Shelton, Queen and Duncan finished it.

New towners had no reply to young visitor

Basildon Sec. Schools 1, Waltham Forest 0

Basildon Sec. Schools 1, Waltham Forest 0. The record books will show that Waltham Forest defeated Basildon in this second round Clark Cup game for the under 14's at Billericay on Saturday. In fact, they were beaten not by a superior team, but by the exceptional ability of an ebullient 13-year-old called Bryn Batson.

Already on the Arsenal books, he destroyed the home side with four great goals, the first three of which were scored inside 15 minutes.

Clad in a green and white of their regular kit, Batson was a sight to behold, and he was given too much room and he exploited it with devastating effect.

After a goalless first half Basildon went ahead four minutes after the restart through their right-winger, G. Williams. Batson's reply was a goal in the 15th minute.

Waltham Forest level inside two minutes, then found the Basildon net twice more, and added his fourth after another forward, Jacutin, had barged a ball into the net.

Best goal

Then Batson put his stamp on the game again with, perhaps, the best goal of the match. Left unmarked on the right, he set the ball up for a shot just outside the penalty box and kicked it into the back of the net.

Basildon were still full of fight, but apart from three or four excellent long-range shots, only the Oakley-Walker party were dangerous and Waltham Forest kept on top.

They increased their lead through Jacutin, who headed his first goal, and beat a defender and Wilson in a chase for a long ball for the second.

Then Batson put his stamp on the game again with, perhaps, the best goal of the match. Left unmarked on the right, he set the ball up for a shot just outside the penalty box and kicked it into the back of the net.



Members of the 1st Basildon and 1st Pitsea and Vange Cub-Scout football teams pictured at the District Scouts' Cup match at Whitmore School on Saturday.

1st Basildon through

1st BASILDON (FRYERNS) 7.
1st PITSEA & VANGE 3

AFTER A thrilling first half which saw-sawed on a way, then the other, the 1st Basildon came through to win their Basildon Scout-Cub on match at Whitmore School on Saturday.

Boys who featured in the scorechart were: 1st Basildon (1st Basildon) and Neale and Bingham (1st Pitsea).

Staff gets cracking for Pitsea

PITSEA UNITED 8.
CHESTERHALL 1

A BRILLIANT individual display by Pitsea's inside-forward Jimmy Staff shattered Chesterhall in this Premier League match on Sunday. He scored four and made two of his side's eight goals as they went to an easy win.

Pitsea overran their visitors from start to finish without unduly exerting themselves, but full credit should go to the sporting Chesterhall side who fought bravely and sportily in defeat.

The Chesterhall defence was obviously in for a gruelling time straight from the kick-off, and the Pitsea right-wing pair of Staff and Keith Sadler soon struck fine form. Pitsea opened the scoring after a jinking run past three men with a fine acute angled shot.

In control

Left-winger Dick Murphy came into the act to score number two just ten minutes later a fine piece of football by Brian Greber, Sadler and Staff ended with Staff hitting home his second goal.

Chesterhall did come back just before the interval to score a disputed goal through Jackie Sharpe, but directly after the break Pitsea once again stamped their authority on the game. Des Pitt quickly made it 4-1, and then his third goal with a fine shot on the run.

Pitsea were now buzzing constantly around the Chesterhall goal, and Billy Read, completely the master in midfield, laid on a number of goals for Sadler. Then Staff split the defence for Pitt to shoot, the ball rolling into the net via a desperate defender.

The Chesterhall forward line was now non-existent, thanks mainly to a fine display by Alan Fredericks who kept the visitors' danger man Sharpe subdued and Flock in the Pitsea goal scarcely touched the ball during this half.

Five minutes from time Staff completed a wonderful day for himself and a disastrous one for Chesterhall with another brilliant goal, working his way through the defence and blasting home goal number eight.

B.E.N.O.C. BEAT 10 MEN

B.E.N.O.C. 7, S.E.M. 1

B.E.N.O.C. played it hard and fast in this Basildon Sunday League game, and the Motor-men, reduced to 10 men after only five minutes were never really in with a chance.

S.E.M. lost their centre-half, Brian Linnage, after a kick in the back of the leg. He was the rest of the game, but B.E.N.O.C. took full advantage of his absence.

Before half-time they had run up a 4-0 lead, and until the score was 0-0 did Enwright set S.E.M.'s goal from a Gregory centre.

In the last minute Tussard handed out B.E.N.O.C. scored from the spot.

Narrow win for Sorrento in fighting finish

Sorrento 4, Double Six 3

DESPITE A fighting finish by Double Six which deserved a point, Sorrento held on for victory in this Basildon Sunday League Premier Division match.

Double Six played badly in the first half an hour, and Sorrento took advantage to score through Dullin and Craven. Back came Double Six, fighting hard and pulling level before half-time with two nice goals.

But before the interval Sorrento had once again taken the lead. Dullin burst through and his blocked shot rolled out for Dullin to score.

Double Six were unlucky in the second half, one shot from Dullin being blocked by Craven, but sticking in the mud, and Armitage being brought down in the penalty area without a penalty being awarded.

Sorrento meanwhile went further into the lead when Craven scored.

Towards the end Double Six got well on top and scored a third goal to make it 4-3, but despite all their pressure they could not equalise.

FOUR GOALS IN LAST 15 MINUTES

SORRENTO "B" 5.
OUTWOOD COMMON 2

WITH 15 minutes of this Basildon Sunday League game to go Outwood Common led Sorrento by two goals to one, but in those last hectic 15 minutes Sorrento scored four times.

Sorrento scored twice through when G. Willis hit a free-kick to the far post for B. Marritt to net. Outwood Common equalised soon afterwards when their left winger, Arnold, who was having a fine game cut in and shot first time.

In the second half Outwood Common went into the lead through Arnold and they held this lead until 15 minutes from time, despite an injury which left Reg Foskett a passenger on the wing.

Then the cracked and Sorrento scored twice through Marritt and Bird from the spot.

Reg Foskett hit the bar with a header just after this—Outwood's last chance—and Sorrento went on to score twice more through Marritt, a fine goal scored on the run, and Yule.

This was a below-par performance by Outwood Common, although the ball did not run for them.

Good debut by Holsgrove

CANVEY "A" 1.
SORRENTO "A" 4

SORRENTO WEATHERED an attack from Canvey at the beginning of this Basildon Sunday League Division One match, but eventually went on to win by three clear goals.

Only three fine saves from Manning prevented Sorrento taking the lead in those first few hectic minutes, but after that Sorrento began to settle down, and they opened the scoring when Groom ran in to head a fine pass wide of the keeper. Canvey continued to give the Sorrento defence some anxious moments until half time, without scoring.

In the second half Sorrento got right on top, however, and it was no surprise when they scored their first goal. Finch picked up a loose ball on the edge of the area and hit a hard shot low into the corner of the net.

Their third goal was an own goal, a low ball crossed from the left and hit the crossbar. Then Groom got number four, later Canvey secured a consolation goal five minutes from time.

Holsgrove had a very good debut for the "A" team, and Mulren made a good return after injury.

OUTWOOD TITLE HOPES BOOSTED

OUTWOOD COMMON 7.
ACADEX 1

AFTER THEIR notable victory against leaders Newcombe and Hastings, Outwood Common boosted their Basildon Sunday League First Division title hopes again this weekend by claiming seven goals against lowly Acadex at New Lodge Recreation Ground.

It took Outwood 27 minutes to open their account, but at the break they were three nil, and their answer to a goal from Acadex soon after the restart was four more before the close.

Acadex played good attacking football throughout and often had the Outwood rearguard in trouble, but their chance of saving a point in the second half disappeared when they were reduced by injury to 10 men for the last 20 minutes.

Outwood were below their best, but all the forwards scored, leading marksmen Terry Dix and Alan Clifton netting two apiece, and Bobby DeAth, Tony Habb and Maurice Turner the others.

Stars of the defence were centre-half Brian Hamber and keeper Tony Fawcett, who made two very fine saves in the second half.

DOUBLE SIX HIT BACK

DOUBLE SIX "A" 5.
CANVEY 1

AFTER A scallous first half and an early Canvey goal after the interval, the Double Six "A" — still smarting from their previous week's defeat — stormed back to championship form at Gloucester Park on Sunday.

Defences held the upper hand in the first half, but Williams was unlucky for the Double Six when his shot from the interval was well saved by the Canvey goalkeeper.

After the break Canvey pressed hard, but went ahead when a clearance by Yates rebounded off a forward into the net.

Shortly afterwards a header by Canham at the other end was punished clear by a defender and from the penalty Williams scored at the second attempt after his first shot had been saved.

Williams added another 10 minutes later and a third goal was scored by Yates, who had pushed a fine ball through the defence.

By now the Double Six were raring to go and further goals were added by Williams (his third) and Benham before the end.

Hudspeth played well in his first league game for the Double Six.

POSITIONS

SUNDAY LEAGUE positions

PREMIER DIVISION

DIVISION 1

DIVISION 2



Now in Stock!

RELIANT REBEL

£533.19.0 60M.P.G.

SALES • SERVICE • SPARES

— USED VEHICLES —

1962 RELIANT Car .. £270 1966 RELIANT Saloon £200
1964 RELIANT Vans .. £295 1965 RELIANT Super £375
1959 HILLMAN Minx £165 1965 HONDA 90 £70

Please call for full information

L. F. PAGE MOTORS

WICKFORD BODY REPAIRS LIMITED
MARKET ROAD, WICKFORD Phone 2362/5312

MOTOR INSURANCE

60% REDUCTION AFTER ONLY THREE YEARS' ACCIDENT-FREE INSURANCE
Minimum basic rates Consistent with Security if you have not yet earned a bonus, still call, write or telephone for a quotation to —
ROBERT A. RUSHTON & CO. LTD. Insurance Brokers
76 LONDON ROAD, SOUTHEND Telephone 47400 or 43244
Name..... Age..... Occupation.....
Address.....
Make of car..... h.p. or c.c..... Value..... Year.....
Cover required: T/Early Fire and Theft..... One/Any Driver
Percentage of no-claim bonus earned with previous Insurer..... per cent.....
A written quotation, without obligation, will be given if the above Coupon is completed and sent to us

G. S. LAST Ltd

Ingrave Road, BRENTWOOD

ROOTES GROUP MAIN AGENTS

NEW VEHICLES IN STOCK for IMMEDIATE DELIVERY

Hillman • Sunbeam • Singer
Commer • Karrier • Humber

SPECIALY SELECTED AND WORKS PREPARED
★ **QUALITY USED CARS**

1966 FORD Cortina De Luxe, four-door, green £550
1966 HILLMAN Super Minx, series IV, red £475
1965 HILLMAN Minx, four-door, blue £450
1965 MORRIS Minor, Traveller, blue £425
1964 HILLMAN Super Minx, green £425
1964 HILLMAN Estate, green £425
1963 SUNBEAM Rapier, four-door, blue £425
1962 FORD Classic De Luxe, blue £425
1961 SINGER Rapier, green £425

Showrooms and Petrol Pumps Open

8 a.m.-8 p.m. Monday to Friday; 8 a.m.-6 p.m. Saturday

USED CARS with a Future!

Specially selected from our Show Week, a few Outstanding Bargains

SUNBEAM Alpine Sports with hardtop, soft-top, tonneau, wire wheels, overdrive, disc brakes, reversing lights, heater, rev. counter, finished in Woodwood blue with black trim; all for £450.
FORD Anglia De Luxe in Monaco red with grey trim, recently fitted Michelin X tyres, one from new, moderate mileage; virtually indistinguishable from new and only £410.
VAUXHALL Victor 101 in Cambridge blue with red and black seat covers, one owner from new in 1965, other extras include heater and wheel rims; a low priced specimen of this family Saloon.

HILLMAN Minx De Luxe (November, 1962) £450
VAUXHALL Hornet (1964) £425
FORD Zodiac Executive (1964) £425

AND MANY MORE ARRIVING EACH DAY

SELECTED FROM OUR STOCK OF 12-SEATERS & MOTOR CARRIAGES

BMC four-berth Dormobiles: choice of several, 1963, 1965 and 1966, blues, greens and greys, all with elevating roofs, mostly one-owners, very low mileages; at prices from £1,200.
MORRIS Highwayman in oxblood — the last word in luxury for the motor caravaner; completely coachbuilt five-berth mobile home on wheels.
COMMER 12-seater Minibus: choice of two, 1965 and 1966, both one-owner vehicles in virtually as new condition from £1,200.

BEDFORD Gaiterbus Home Cruiser Motor Caravan, four-berth, elevating roof, gas, water and all the comforts for only £1,200.
THAMES 12-seater in ivory with cherry red trim, one owner and very much above average, 1965, reasonably priced at only £1,200.

VOLKSWAGEN Microbus in due-blue — the last word in 12 months' use owner will accept, as sacrifice, just £1,200.
PLEASANT PART EXCHANGES • UP-TO-DATE H.P. TERMS •

MERIT MOTORS 216-220 LONDON ROAD
HADLEIGH (on the main A13, opp. Kingsway Theatre) OPEN 10.30 P.M. DAILY

STANDARD STAFF FINDER

MACHINE SHOP PERSONNEL

We have recently opened a new Machine Shop and now have applications from skilled male personnel for the following vacancies:

**DETAIL FITTERS
PRESS SETTERS
CAPSTAN SETTER OPERATORS
UNIVERSAL MILLERS
TOOLMAKERS**

Excellent conditions and opportunities in a modern factory.

For further particulars please write or call for interview.

C. R. Cole, Personnel Officer

Standard Telephones and Cables Limited
Chester Hall Lane, Basildon

STC

MOBIL OIL CO. LTD.

REQUIRE A

STENOGRAPHER

for a confidential post involving interesting clerical/stenographic work at the Company's Research and Technical Service Laboratory. Ideal working conditions. Applicants should have sound training backed up by good experience. Excellent salary, five-day week. Good canteen facilities. Excellent employee benefit plans, sports and social club.

Applications to

Service Division Manager
Research and Technical Laboratory
MOBIL OIL COMPANY LIMITED
Coryton, Stanford-le-Hope, Essex.

OFFICE STAFF

Consult the **BASILDON STAFF BUREAU**

6A SOUTHERNHAY, BASILDON Phone: Basildon 23381

We are in the Town Centre at the corner of Great Oaks and Southernhay
We have vacancies in various categories: permanent and temporary
Experienced staff only

SOUTH ESSEX HOSPITAL MANAGEMENT COMMITTEE

Applications are invited for the post of

ASSISTANT ENGINEER

AT ST. ANDREW'S HOSPITAL, BILLERICAY

Applicants should have served an apprenticeship in either Mechanical or Electrical Engineering and be in possession of an Ordinary National Certificate in Engineering, or equivalent. Engineers without the necessary qualifications may apply and assistance to obtain these qualifications will be given on appointment, but during that period the appointment will be subject to an abatement of salary of £100 per annum.

The successful applicant will be working under the direction of qualified engineers and opportunities for promotion within the service are available.

Relevant accommodation may be made available for the successful candidate.

Salary within the scale £850 to £1,114, according to experience and qualifications.

Applications, stating age, qualifications, experience, together with the names of two referees to be forwarded to the Group Secretary, South Essex Hospital Management Committee, Thurrock Hospital, Grays, Essex, by March 6.

WANTED AT BILLERICAY

PART-TIME FEMALE COUNTER CLERKS

REQUIRED. Monday to Saturday, 12.30 to 5.30 p.m.; 12.30 to 6.30 p.m. in summer months, overtime extra. £8.10.0 starting wage.

Applicants must have a pleasant personality and be of smart appearance. References required. Age limits 18 to 25.

ALSO

BOARDMEN required

racing hours only. Good handwriting essential.

Apply by phone for all positions for appointment, Billericay 87 or 39.

Have the following skilled vacancies:

- SKILLED MACHINIST (Fine Boring)
- HORIZONTAL BORER
- VERTICAL BORER (Night Shift)
- RADIAL DRILLERS
- SURFACE GRINDER (Night Shift)
- MAINTENANCE FITTER
- INSPECTORS, SKILLED
- LABOURER
- PACKER

Write, telephone or call

YORK SHIPLEY LTD.

Gardiners Lane, Basildon Telephone: Basildon 22231

MAKE A CAREER WITH YOUR COUNTY FIRE BRIGADE Firemen

required

Commencing rate at 18 £12.18.8 to £14.17.1 at age 24; rising to £17.16.6 a week. Shoes, shirts, socks and uniform provided free. Full pay during sickness. Excellent pension; retirement from age 50. Good promotion prospects. Three weeks' holiday and six days' public holiday leave. Qualifications: age 18 to 30 (higher if ex-Regular Service man); height 5ft. 7in. or more; chest 36in. to 38in. or more. Apply local Fire Station or write CHIEF OFFICER, 67 RAYLEIGH ROAD HUTTON, BRENTWOOD

Taking 'O' Level Maths & Physics this Summer? Want to be an Engineer?

The job of a lifetime could be waiting for you with the



in the Southend Telephone Area

Boys leaving school are interviewed just before 'O' level exams for posts as trainee Technicians (Apprentices). Age limits 16-17½ years. Starting pay £6. 5s. 6d. to £11. 1s. 0d. according to age. The 3 year training scheme leads to permanent posts as salaried engineers.

- ▶ Excellent career prospects ▶ Interesting work ▶ Day release for Study ▶ Leading to Established Post Office Appointment ▶ Good holidays ▶ Pensionable Post

APPLY TO: TELEPHONE MANAGER, REF.C12/2/TTA, TELEPHONE HOUSE, 45 VICTORIA AVENUE, SOUTHEM-ON-SEA, ESSEX

LONDON & THAMES HAVEN OIL WHARVES LIMITED

EUROPE'S LARGEST INDEPENDENT OIL STORAGE INSTALLATION

has vacancies in the Engineering Department, for the following staff

DESIGN SECTION LEADER

The successful candidate will be responsible for the supervision and checking of a small team of qualified design draughtsmen engaged on storage and distribution facilities for petroleum and allied products, together with the checking of similar work assigned to consultants. Applicants should be qualified engineers with a minimum qualification of Higher National Certificate (Mechanical) and preferably with Graduate Membership of an appropriate senior institution. A minimum period of five years' experience in the oil or chemical industry is absolutely essential. The preferred age range is 25 to 45, but less qualified candidates over 45, with exceptional experience will be considered. The salary will be within the scale £1,400 to £1,875 and starting salary will be negotiable, dependent on age, qualifications and experience.

DESIGN DRAUGHTSMAN

Candidates should have experience in the design and layout of plant pipework, storage tanks, and associated services for the oil or chemical industry, and experience in structural design and building works would be an advantage. Applicants must have served a recognised engineering apprenticeship and obtained a minimum qualification of O.N.C. in Mechanical, Chemical, Structural or Civil Engineering. At least five years' experience in design work is desirable. The salary will be within the range £1,114 to £1,364 and starting salary will be negotiable, dependent on age and experience.

A vacancy also exists for an experienced

LAGGER

Applicants must be experienced in the installation of piping, tanks and vessels and be able to use all materials associated with this type of work, in particular the forming and fitting of sheet metal covering. A forty-hour, five-day week is in operation with a salary of £218.8 per week. The Company operates a contributory pension and free life assurance and offers excellent working conditions and welfare facilities. Applications giving full details of previous experience, qualifications, age and present salary, should be addressed to the

Assistant Installation Manager

THAMES HAVEN, STANFORD-LE-HOPE for the DESIGN SECTION LEADER post, and to the Personnel and Industrial Relations Manager at the same address for DESIGN DRAUGHTSMAN and LAGGER.



I AM A NURSE

It wasn't until I became an S.R.N. that I really appreciated just how many opportunities there are for nurses.

I began my training when I was 18 and although the hours were irregular and there was lots to learn, I still had plenty of time for leisure. In fact ever since the 84 hour fortnight was introduced I have had at least a day and a half off each week. I know that many of my friends envy me when I am able to go shopping or visit the hairdresser in the morning or afternoon. Living in too is marvellous. There is none of the frustration and strain that you get when travelling in rush hours. As for nursing itself - well not only are you able to build yourself a highly satisfying career as promotional prospects are so good, but you also have the satisfaction of knowing that you're doing a worthwhile job.

Please write for brochure and application form to: The Matron, St. Andrew's Hospital, Billericay, Essex.

... Road, Southend-on-Sea. Friday, 1901.