

# BASILDON Standard RECORDER

No. 738 SATURDAY, DECEMBER 30, 1967BA 4d.



Coun. A. Baron Burn, J.P. (Chairman of Basildon Council), and his wife paid a Christmas visit to Basildon Fire Station. They are seen in the watch room with Station Officer E. F. Thomson and Fireman R. Hobbs.

## Elderly neighbours died at Laindon

TWO ELDERLY people died simultaneously next door to each other at Powell Road, Laindon, on Wednesday.

Widow Mrs. Lydia Ethel Winkworth died early Wednesday morning in her flat at 55, Powell Road.

At 57a, Mr. John Smith, formerly a mechanical engineer, also died on Wednesday morning.

Mr. Smith, who was 86, actually lived opposite at 18a, Powell Road. He was being looked after at No. 57a by Miss Agnes Briar.

Mrs. Winkworth lived alone in the downstairs flat. Upstairs at No. 55, Mr. William Tilley said he and his wife had heard a noise in the night,

but thought nothing of it. "Mrs. Winkworth had always been good to us," said Mr. Tilley. "We looked out for her and when she did not collect her milk on Wednesday morning we suspected that something was wrong."

Mr. Tilley contacted Mrs. Winkworth's daughter in case she had gone out early to see her. Later, when the Police arrived to see to Mr. Smith, he called them in and they broke into Mrs. Winkworth's flat.

### CAKE AND A CUPPA

The spirit of Christmas prevailed over the weekly meeting of the Laindon Hills and District O.A.P. branch which was heightened by the gift of a Christmas cake by Carnival Queen Geraldine Gahan. Everyone enjoyed a slice with their cuppa. Mrs. Hogben at the piano led a programme of Christmas carols. Mr. and Mrs. Martin gave a child's desk and stool, to be auctioned for branch funds. Members were reminded that the next meeting would take place on Thursday, January 4th.

## Only one Christmas Day baby at St. Andrew's



CHRISTMAS DAY WAS NEARLY EIGHT HOURS OLD WHEN THE FIRST CRIES OF A BABY ECHOED THROUGH THE MATERNITY WARD AT ST. ANDREW'S HOSPITAL, BILLERICAY, HERALDING A NEW-BORN BOY, THE ONLY CHILD TO BE BORN IN THE HOSPITAL THAT DAY.

THE MOTHER—SEEN ON THE LEFT WITH HER BABY SON—WAS MRS. MARGARET WASSON, OF MYNCHENS, BASILDON.

THE BABY WAS BORN AT 7.45 A.M. AND LATER IN THE DAY A PROUD FATHER VISITED MOTHER AND SON.

THE BABY WEIGHED 6LB. 6OZS. AT BIRTH.

THE CUSTOMARY SILVER SPOON, A GIFT FROM THE LEAGUE OF FRIENDS, WAS PRESENTED TO THE BABY BY MATRON MISS Q. M. JACKSON.

## BASILDON MASTER PLAN DECISION

(See Page 2)

## The Orient will not be coming to Basildon

DISAPPOINTMENT hit Basildon's soccer ranks on Wednesday when Orient Football Club stated they are not coming to the New Town after all, writes PETER LUCAS.

Reason for the change of plans is the recruitment of two new directors, who have promised to plough much-needed cash into the club, reported to be losing £800 a week at present.

One of the benefactors has not yet been named, but the other is Knightsbridge casino-restaurant owner Wolf Badash, who has been a regular attendee at recent matches.

Club Chairman Arthur Page said on Wednesday: "The directors have decided our roots are in the East End and this is where we must stop."

So ends all hope of Orient moving to Basildon, hope which started in November when club officials first met the Development Corporation to discuss a ground. Later the Minister of Sport, Mr. Denis Howell, was brought into the discussion.

There was general disappointment in Basildon this week over the no-move decision. But most people

believe that it could hasten the development of a senior amateur soccer ground in the town.

"What we want is unity," he said, "because the town has the talent if every section would work together."

Just before Christmas Mr. Morris met the Corporation to discuss the provision of a ground for the senior club.

"Certain concrete proposals were put forward concerning the size and location, but I cannot disclose the full outcome of the meeting until I have reported back to the Sports Council," he said.

Happiest man after the decision will help bring a senior soccer ground more George Bushnell, brains quickly.

behind the Basildon United Club recently adopted as the Sports Council's official senior side.

### HE WAS RIGHT

George has said all the way along that Orient would not come and he has been proved right.

"I reckon we will get much more support in the town if we build up our own club. Of course, it will take a long time to get top status, but we should not let this worry us."

George also believes the decision will help bring a senior soccer ground more George Bushnell, brains quickly.

## NEW from BOLEX

### The 155 MACRO ZOOM SUPER 8 CINE CAMERA

Fully automatic push-button Movie Camera. Through-the-lens exposure metering and through-the-lens reflex focusing down to ONE INCH from the zoom lens for exciting close-ups which can be magnified at least fifty times larger than life size when projected. Normal and slow-motion filming. Easiest magazine loading of film and electrically driven.



£139.17.6 OR ON TERMS

AVAILABLE ONLY FROM BOLEX ACCREDITED DEALERS

## FFORDS PHOTOGRAPHIC Ltd.

71 SOUTHERNHAY, TOWN CENTRE, BASILDON  
Telephone: BASILDON 21455

## 24-hour drain clearing service

### FOR INDUSTRY COMMERCE AND THE HOME



Drains, Sewers  
Toilets, Baths  
Wash basins  
Sinks  
Stack pipes  
Waste pipes  
Urinals

ALL PIPES  
CLEANED  
FULL BORE  
LIKE NEW



Call the man in white—  
day or night.

### DYNO-ROD DRAIN SERVICE

Head Office: 7 Ryeleigh Road, London, S.W.14  
In all leading towns and cities

Stock 636  
Havleigh 5300



A yard of ale for a contestant in the beer-drinking competition at the Locarno Ballroom, Basildon, on Friday. Looking on in admiration is Carnival Queen Geraldine Gahan, who organised the evening in aid of funds for the Multiple Sclerosis Society.

## OUR ONE and ONLY SALE OF THE YEAR

BARGAIN TIME

STARTS

TODAY, FRIDAY, DECEMBER 29th

AT

## A. L. HARRISON LTD

23 HIGH STREET, BILLERICAY

- REMNANTS of good quality CARPET, at HALF PRICE
- 100 12ft. x 9ft. top grade AXMINSTERS, from £24 each
- 27in STAIR CARPET, 22.6 yard.
- 7ft 6in. x 6ft. AXMINSTERS, from £12.19.6.
- 10ft. 6in. x 12ft. AXMINSTERS, from £22.10.6.
- GOATSKIN RUGS, £6.15.0 each.
- Large selection of RUGS, all at greatly reduced prices, from £2.8.6

THE GOLDEN OPPORTUNITY SALE WITH BARGAINS TOO NUMEROUS TO LIST

# BILLERICAY Standard RECORDER

No. 738 SATURDAY, DECEMBER 30, 1967 4d.

## COUNCIL CHAIRMAN VISITS POLICE



The Chairman of Basildon Council (Coun. A. Baron Burn, J.P.) visited Billericay Police on Saturday. In the picture are Insp. G. Manning, D.C. J. Kennelly and Mrs. and Coun. Burn.

## SHOPKEEPERS MET A FRANTIC LAST MINUTE RUSH OF BUYERS

THE CHRISTMAS bonanza in Billericay High Street climaxed to "one mad rush" in the last week of yuletide, many traders reported this week.

Mr. J. S. Allcock, manager of Woolworths, said business was well up on last year, and that seven extra staff were called in to handle the large number of shoppers.

"It seemed to be the trend this year for everybody to leave their shopping until the last

few days," he said, "and then there was a frantic rush." The wine and spirit trade had a bumper year—due probably to the fact that the breathalyzer law made it safer to drink at home.

Manager of Unwins, Ltd. Mr. W. G. Key commented, "We had an exceptionally good Christmas. Whims, spirits and beers were selling very well during the last week."

Even the ironmongers had a busy week. Lanyards, who also deal in glassware and cigarettes, etc., had a very satisfactory trade. Manager Mr. C. McLaren said, "It started very slowly—but it built up to one mad rush."

Greengrocers, on the whole, had an unsatisfactory Christmas, and most managers agreed that it was probably because fruit had become so expensive.

Mr. John Bell, of John's greengrocers, of Radford Way, declared, "I was very disappointed. I opened last January and this was my first Christmas here. The fruit prices were very high—grapes cost 9d. compared with 7d. last year. Nuts, costing about the same as last year, sold quite well."

## Only one Christmas Day baby at St. Andrew's



CHRISTMAS DAY WAS NEARLY EIGHT HOURS OLD WHEN THE FIRST CRIES OF A BABY ECHOED THROUGH THE MATERNITY WARD AT ST. ANDREW'S HOSPITAL, BILLERICAY, HERALDING A NEW-BORN BOY, THE ONLY CHILD TO BE BORN IN HOSPITAL THAT DAY.

THE MOTHER—SEEN ON THE LEFT WITH HER BABY SON—WAS MRS. MARGARET WASSON, OF MYNCHENS, BASILDON.

THE BABY WAS BORN AT 7.45 A.M. AND LATER IN THE DAY, A PROUD FATHER VISITED MOTHER AND SON.

THE BABY WEIGHED 6LB. 8OZ. AT BIRTH.

THE CUSTOMARY SILVER SPOON, A GIFT FROM THE LEAGUE OF FRIENDS, WAS PRESENTED TO THE BABY BY MATRON MISS Q. M. JACKSON.

## BASILDON MASTER PLAN DECISION

(See Page 2)

## The Orient will not be coming to Basildon

DISAPPOINTMENT hit Basildon's soccer ranks on Wednesday when Orient Football Club stated they are not coming to the New Town after all, writes PETER LUCAS.

Reason for the change of plans is the recruitment of two new directors, who have promised to plough much-needed cash into the club, reported to be losing £800 a week at present.

One of the benefactors has not yet been named, but the other is Knightsbridge casino-restaurant owner Wolf Badmash, who has been a regular attendee at recent matches.

Club Chairman Arthur Page said on Wednesday: "The directors have decided our roots are in the East End and this is where we must stop."

So ends all hope of Orient moving to Basildon, hope which started in November when club officials first met the Development Corporation to discuss a ground. Later, the Minister of Sport, Mr. Denis Howell, was brought into the discussion.

There was general disappointment in Basildon this week over the no-move decision. But most people

believe that it could hasten the development of a senior amateur soccer ground in the town.

Basildon League Secretary Joe Hearn was "one disappointed man." "I thought it would be great if Orient came," he said, "but now we are left with going it alone, forming our own team and climbing up the ladder in stages."

"Orient were offered a ground in the town and I should hope this same ground will be made available for the local senior club."

Football Section Chairman George Morris said the Orient decision gives footballers of the town a much better

opportunity of establishing a worth-while club.

"What we want is unity," he said, "because the town has the talent if every section would work together."

Just before Christmas Mr. Morris met the Corporation to discuss the provision of a ground for the senior club.

"Certain concrete proposals were put forward concerning the size and location, but I cannot disclose the full outcome of the meeting until I have reported back to the Sports Council," he said.

Happiest man after the Orient news had broken was

George Bushnell, brains behind the Basildon United club recently adopted as the Sports Council's official senior side.

George has said all the way along that Orient would not come and he has been proved right.

"I reckon we will get much more support in the town if we build up our own club. Of course, it will take a long time to get top status, but we should not let this worry us."

George also believes the decision will help bring a senior soccer ground more quickly.

## NEW from BOLEX

### The 155 MACRO ZOOM SUPER 8 CINE CAMERA

Fully automatic push-button Movie Camera. Through-the-lens exposure metering and through-the-lens reflex focusing down to ONE INCH from the zoom lens for exciting close-ups which can be magnified at least fifty times larger than life size when projected. Normal and slow-motion filming. Easiest magazine loading of film and electrically driven.



£139.17.6 OR ON TERMS

— AVAILABLE ONLY FROM BOLEX ACCREDITED DEALERS —

FFORDS PHOTOGRAPHIC Ltd.

71 SOUTHERNHAY, TOWN CENTRE, BASILDON  
Telephone: BASILDON 21455

## 24-hour drain clearing service

FOR INDUSTRY  
COMMERCE  
AND THE  
HOME



Drains, Sewers  
Toilets, Baths  
Wash basins  
Sinks  
Stack pipes  
Waste pipes  
Urinals

ALL PIPES  
CLEANED  
FULL BORE  
LIKE NEW



Call the man in white—  
day or night.

DYNO-ROD  
DRAIN SERVICE

Head Office: 3 Pymleyham St., London, S.W.14  
In all leading towns and cities  
Stock 636  
Hayleigh 5300

## A "Royal" draw



Carnival Queen Gloria Shaylor and Princess Elaine Lincoln drew the prizes for the Billericay Junior and Infants' School Parent-Teacher Swimming Pool Association Christmas draw at the Red Lion, Billericay. They are seen with members of the Committee.

## OUR ONE and ONLY SALE OF THE YEAR BARGAIN TIME

STARTS  
TODAY, FRIDAY, DECEMBER 29th

AT  
A. L. HARRISON LTD  
23 HIGH STREET, BILLERICAY

- REMNANTS of good quality CARPET, at HALF PRICE
- 100 12ft. x 9ft. top grade AXMINSTERS, from £24 each
- 27in. STAIR CARPET, 25 6 yards
- 7ft. 6in. x 9ft. AXMINSTERS, from £12.9.6
- 10ft. 6in. x 12ft. AXMINSTERS, from £22.10.0
- COATSKIN RUGS, £6.10.0 each
- Large selection of RUGS, all at greatly reduced prices, from £2.8.6

THE GOLDEN OPPORTUNITY SALE WITH  
BARGAINS TOO NUMEROUS TO LIST

# WICKFORD Standard RECORDER

No. 738 SATURDAY, DECEMBER 30, 1967 4d.



The Chairman of Basildon Council (Coun. A. Baron Burn, J.P.) visited Wickford Ambulance Station on Friday. D. Westall and E. Downham show him some of their latest equipment.

## A housewife's year of protest

**HOUSEWIFE** get-the-footpaths-safer campaigner Mrs. Eleanor Muckett of Wick Beech Avenue, Wickford, this week had a final word to say in 1967 to end her 12 months of protests about the town's pavements.

She referred to a Basildon Council spokesman saying that, apart from the pavement outside Adcock's newsagents' shop, the Council did not appear to have had other complaints about footpaths in The Broadway. "How ridiculous can we get," said Mrs. Muckett, "I made a detailed survey to the inch covering the whole of the High Street, Market Street and Southend Road to Wick Beech Avenue. I sent a copy to the Council. I surveyed the scene with Mr. Crisp, the Highways Superintendent and was assured that these paths would be put right in two months' time."

She pointed out that people had been badly injured by accidents on the pavements in the town and said, "May I remind the public that should they fall and injure themselves on bad pavements in the area mentioned in the survey they can claim, provided they report their accident to the Police."

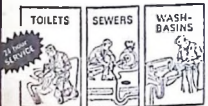
**24-hour  
drain clearing  
service**

**FOR INDUSTRY  
COMMERCE  
AND THE  
HOME**



Drains, Sewers  
Toilets, Baths  
Wash basins  
Sinks  
Stack pipes  
Waste pipes  
Urinals

**ALL PIPES  
CLEANED  
FULL BORE  
LIKE NEW**



Call the man in white—  
day or night

**DYNO-ROD®  
DRAIN SERVICE**

Head Office: Regentham Rd., London, W.16  
In all leading towns and cities  
Black 636  
Haywards 5300

## Pensioners who dined well



THESE OLD FOLK—MEMBERS OF WICKFORD No. 2 O.A.P. BRANCH—HELD THEIR CHRISTMAS DINNER AT WICKFORD COMMUNITY CENTRE AND OBVIOUSLY HAD A VERY GOOD TIME.

## Victim from Wickford

### Man held on murder charge

**A 34-YEARS-OLD Belgian, charged with murdering an ex-Wickford woman, allegedly told Police: "I hit her—I held her neck and hit her two times. I didn't realise I killed her."**

The man, Willy Billau, was remanded in custody by Southend Magistrates on Friday until Thursday accused of murdering 68-years-old Mrs. Bertha Cates in the Springfield Drive, Westcliff, house where she lived. Mrs. Cates lived for several years in Friern Gardens, Wickford.

When he appeared before the Magistrates again on Thursday Billau was remanded in custody until next Thursday.

The house at Westcliff was occupied by Mr. Joseph Herinckx, his wife and Mrs. Cates (her sister) and Billau, who lived together as a family, the Court heard.

Det.-Supt. John Graves (Head of Southend C.I.D.), applying for the remand, said the couple were out for about ten minutes and, on returning, they saw Billau standing outside the front door.

#### In kitchen

He allegedly said: "Don't come in. Fetch the Police."

The couple went into the house and saw Mrs. Cates lying in the kitchen, her face covered in blood.

Supt. Graves said Prof. Francis Camps conducted a post mortem, finding

external and internal injuries to the body.

Charged with murder and cautioned, Billau allegedly said:

"I didn't realise I killed her. I didn't realise she was dead."

## THE LIGHTS PLEASED

**HOW WERE** Wickford's Christmas Street illuminations received?

Very well, according to members of the public. "It was nice to see them and they made shopping seem far easier," said one woman.

Commented Mr. Brian Ruff, President of the town's Chamber of Trade, who were responsible for the lights. "I was very pleased to see them there and am sure we were very pleased to provide them."

"I hope we shall be able to do the same next year."

#### DRIVERS WARNED

Warning letters are to be sent to nine people who contravened Basildon Council parking restrictions at the Market Road, Wickford, car park.

#### YOUNG PEOPLE'S PARTY

Wickford Parish Young People's Fellowship held their Christmas party at St. Andrew's Hall on Monday.

## RECORD ATTENDANCES AT THE CHURCHES

**CROWDED CHURCHES** for services over the Christmas period were reported from the Billericay and Wickford areas.

Said Rector of Wickford Rev. Frederick France: "As far as I'm concerned this Christmas was a very responsive one. At the midnight service at St. Catherine's we had the largest congregation we have ever had, and a record number of communicants."

Parish Priest of Wickford Father John Gallagher reported that at midnight mass the Roman Catholic Church was packed, and people had to stand in the porch.

At Billericay there were 457 people at midnight mass in the Roman Catholic Church. A total of 550

people attended Christmas Day services.

Rev. Geoffrey Holley, Rector of Great Burstead, told the "Standard": "The midnight service was absolutely crowded and some of the congregation had to stand. There were not so many people as usual at the morning family service."

## Buying homes

Chelmsford Rural District Council are considering a proposal to buy privately-owned empty houses and let them to some of the 1,400 people on their waiting list.

## NEW from BOLEX

### The 155 MACRO ZOOM SUPER 8 CINE CAMERA

Fully automatic push-button Movie Camera. Through-the-lens exposure metering and through-the-lens reflex focusing down to ONE INCH from the zoom lens for exciting close-ups which can be magnified at least fifty times larger than life size when projected. Normal and slow-motion filming. Easiest magazine loading of film and electrically driven.



£139.17.6 OR ON TERMS

AVAILABLE ONLY FROM BOLEX ACCREDITED DEALERS

**FFORDS PHOTOGRAPHIC Ltd.**

71 SOUTHERNHAY, TOWN CENTRE, BASILDON  
Telephone: BASILDON 21455

## OUR ONE and ONLY SALE OF THE YEAR BARGAIN TIME

STARTS  
TODAY, FRIDAY, DECEMBER 29th

AT  
**A. L. HARRISON LTD**  
23 HIGH STREET, BILLERICAY

- REMNANTS of good quality CARPET, at HALF PRICE
- 100 12ft. x 9ft. top grade AXMINSTERS, from £24 each
- 27in. STAIR CARPET, 22/6 yard.
- 7ft. 6in. x 9ft. AXMINSTERS, from £12.9.6
- 10ft. 6in. x 12ft. AXMINSTERS, from £22.10.0
- GOATSKIN RUGS, 56.15.0 each.
- Large selection of RUGS, all at greatly reduced prices, from £2.5.6

THE GOLDEN OPPORTUNITY SALE WITH BARGAINS TOO NUMEROUS TO LIST



WICKFORD TABLE TENNIS CLUB HELD A CHRISTMAS DANCE AT THE COMMUNITY CENTRE ON SATURDAY. AMONG THE GUESTS WERE CARNIVAL QUEEN ANN CAMP AND HER TWO PRINCESSES, SONIA MARTIN AND LESLEY INCE.

## Basildon Master Plan,

Government decision

# APPROVED, BUT POPULATION IS REDUCED

**BASILDON'S** new 140,000 population Master Plan has been approved by the Minister of Housing except for the two controversial housing neighbourhoods which were planned in the beauty spot area of Langdon Hills.

The Minister's decision, announced as the "Standard Recorder" went to press yesterday (Friday), means that the deletion of the neighbourhoods Kingston Ridge and Hawkesbury—both on the Thurrock, or south side, of Dry Street, Langdon Hills—reduces the plan's ultimate population by 6,600 people.

The existing plan allows for a total population of 106,000. Following the South-East Study the Corporation were asked to examine the possibility of further growth. They concluded that about 140,000 people could be accommodated in the existing designated area.

Their revised Master Plan, submitted in August, 1966, proposed additional residential neighbourhoods, a further area for industrial development, some new roads and public open space areas and major extensions of the shopping and business centres at Laindon and Pitsea.

It is proposed that planned immigration from London should continue until about 1976 when the population would be about 103,000, after which the town would continue to grow to about 140,000 by the end of the Century.

In December, 1966 the Minister said he thought it right that provision should be made within the designated area for the natural increase of population now expected as well as for some increase over present

plans in the numbers to be received from London.

At a public inquiry there were particularly strong objections to the proposed new residential neighbourhoods of Kingston Ridge, Hawkesbury and to a lesser extent, Longwood in the south-western part of the town, in view of their proximity to important areas of public open space.

A letter to the Corporation giving the Minister's decision states that it is right that Basildon should continue to make a contribution to relieving the housing needs of London and that there should be further development there.

But the Minister considers that Kingston Ridge and Hawkesbury should not be developed, but kept as a buffer of countryside between the built-up area of the town and the public open spaces to the south. He accordingly agrees with the Inspector that these proposals should be deleted from the plan.

Subject to this (and a number of other points reserved in the decision letter), the Minister approves the Corporation's Master Plan as a suitable guide for the further development of the Town.

The division of the two neighbourhoods of King-

## PREACHED SERMON FOR A GUINEA

SINCE 1617 the John Puckle sermon has been preached at St. Nicholas' Church, Laindon, on December 27th—but this week history was made.

For Deaconess Pat Cotton became the first woman to earn the fee of one guinea for preaching the sermon at the hilltop church.

Puckle left land which was sold for £957 and the money invested in a charity. This capital is still held in trust and the interest of £18 18s. 4d. used every year.

It goes to help poor parents pay for their children's education and provides food for needy people—even in these years of the Welfare State there is still a use for the money.

Originally the money went towards supporting a school-master at a time when part of the church was used as the master's house and schoolroom.

A commemorative tablet at the church says: "Soli Dep Gloria, John Puckle, of this parish by his last will and testament dated May 16, 1617, gave all his copyhold lands to the maintenance of a school-master for teaching a competent number of poor children."

He asked for his will to be marked yearly by the preaching of a sermon on St. John's Day. This is still preached and the fee set by Puckle is paid.

The charity is run by six trustees. It is the primary charity which is still in existence in the parish of Laindon-cum-Basildon.

### DISCLAIMER

Mr. Brian Martin, of 24, Raintree Fold, Basildon, has asked us to point out that he has no connection with a man of the same name, also of Raintree Fold, who appeared at Billericay Magistrates' Court last week. A report of these proceedings appeared in our issue of December 22nd.

## THIS IS OUR OPINION

## Comprehensive school queries to be answered

AS BILLERICAY'S two senior schools, the Secondary and Mayflower, will be among those in the urban district to go comprehensive next September, it is nice to note that an organisation which was born in the town and still has its deepest roots there is taking up a question of vital importance to comprehensive-bound children and their parents.

It is the Association for the Advancement of State Education and the subject of importance to parents is the choice of school. For a long time the Association have been pressing for this point to be given earnest consideration by the authorities concerned.

Now it appears from what the Association say that "only the customary half-hearted gesture" towards giving a choice has been made in a letter to parents.

That parents should have a choice and not have to send their children to the school nearest their home is something which must be fought for and won.

And there is no doubt that the Association will put up a hard fight not only for the parents and children of Billericay, but also throughout the urban district.

## 1968—GLOOMY PROSPECTS FOR THE NEW TOWN

NEW YEAR greetings for the New Town from the Minister of Housing this year came in the form of a plea to cut expenditure.

Basildon Council received a letter requesting a tightening of the belt on everything except housing and schools, and the Corporation have received similar instructions.

The cuts come at a time when a decision on the new Master Plan to take the New Town to a 140,000 population is expected any moment. In the last six months the Corporation have been held up because of the long delay in a decision being made on the Plan.

Now they are likely to be held up in implementing it once approval is given by the restriction on expenditure.

The cuts are likely to hit expanding areas like Basildon more than

old-established towns who have been managing for years on what they have got.

With no let-up in the housing programme, more and more people in

Basildon will now have to suffer longer because of what is missing.

It is a situation which all adds up to gloomy prospects for 1968 in the town.

## LONE VOICE STILL CRIES OUT AT WICKFORD

AS THE YEAR 1967 gets ready to go into history a lone voice is heard in the wilderness—a voice which has been heard many times during the past 12 months.

It is that of Wickford housewife Mrs. Eleanor Muckett, and it is raised once again in protest at the state of the town's pavements, particularly those in the main streets.

It would seem that Mrs. Muckett has not had much success with her campaign to get paving stones levelled, cracks in paths filled in and pavements kept clean of mud, for it was not until this month that this newspaper received a complaint other than that of Mrs. Muckett about the same subject.

And this complaint, from the town's Chamber of Trade, has roused Mrs. Muckett to protest again. This time at what she feels is an inaccuracy on the Council's part—the statement that there did not appear to have been any complaints about certain sections of The Broadway pavements.

It is to be hoped that this campaigner will not be the only person, nor her voice the lone one, to speak up in the coming year about the state of the pavements, or, for that matter, any other subject which affects the public at large.

In fact, it would be far nicer, if, because of quick, efficient action, there was no need for any voice to be raised in protest or complaint in the 12 months beginning on Monday next.

But that must be too much for which to hope!

## There is co-operation with the Council

COMPLAINTS that building contractors D. A. Moody, Ltd., have been dumping concrete, wood, iron, bricks and old office furniture on a piece of waste land off Norsey Close, Billericay, have been investigated by Mr. Eric Moonman, M.P.

Moody's were given permission to fill in low areas on the waste land with topsoil, subsoil, sand and ballast by the Ministry of Housing and Local Government at an inquiry in September, 1966.

Soon after tipping started, however, Norsey Close residents complained to Basildon Council and Mr. Moonman that the Ministry's conditions were being ignored, lorries were breaking up the pavement and the Close was being showered with mud and dust.

The Council repeatedly warned the firm to stick to the Ministry's agreement, but they only complied with the warnings for a few days before reverting to their old practice of racing up and down the road, driving on the pavement and spilling mud, stones, and the like, on the residents in a letter to Mr. Moonman.

After visiting the site, Mr. Moonman took the matter up

"Each of these complaints has been investigated and there is no evidence of unauthorised companies tipping materials on the site," said Mr. Taylor.

"There is an access to the site other than Norsey Close, but the Minister did not specify which access was to be used and as it is a public highway the company have every right to use it."

"As the Close is only about 100 yds wide with a 10 ft wide footpath, it is possible that obstruction could be caused by parked vehicles, but the Council know of only one occasion when there has been an obstruction," he said.

"Regarding complaints of damage to trees, the Council have given an assurance that it is their intention to preserve as many as possible."

It has been noted that certain trees have had their lower branches lopped, but this was necessary for the tipping to take place.

A more recent complaint has also been made about the laying of hardcore on the site, but investigation has proved this necessary to prevent vehicles from getting bogged down. It is thought this will also reduce the amount of mud and clay deposited on the road.

It appears that the Council is co-operating with the complaints as they arise. Regular inspections have been made and will continue to be made, and the position kept under review," concluded Mr. Taylor.



**FASHIONS**

**BRIDALWEAR**

**SALE** Starts Today Saturday

**DRESSES** from 10/-

**COATS** - from £1

**SUITS** - - from £1

**REDUCTIONS ON ALL BRIDALWEAR BOUGHT DURING SALE**

*Bargains Galore —*

*Come early to avoid disappointment!*

**6 SOUTH WALK, BASILDON, ESSEX**

Facing Main Bus Terminus Telephone: BASILDON 21652

**OPEN UNTIL 6.30 p.m. ON FRIDAYS**

## Basildon Master Plan, Government decision **APPROVED, BUT POPULATION IS REDUCED**

**BASILDON'S** new 140,000 population Master Plan has been approved by the Minister of Housing except for the two controversial housing neighbourhoods which were planned in the beauty spot area of Langdon Hills.

The Minister's decision, announced as the "Standard Recorder" went to press yesterday (Friday), means that the deletion of the neighbourhoods Kingston Ridge and Hawkesbury—both on the Thurrock, or south side, of Dry Street, Langdon Hills—reduces the plan's ultimate population by 6,000 people.

The existing plan allows for a total population of 106,000. Following the South-East Study the Corporation were asked to examine the possibility of further growth. They concluded that about 140,000 people could be accommodated in the existing designated area.

Their revised Master Plan, submitted in August, 1966, proposed additional residential neighbourhoods, a further area for industrial development, some new roads and public open space areas and major extensions of the shopping and business centres at Laindon and Pitsea.

It is proposed that planned immigration from London should continue until about 1976 when the population would be around 103,000, after which the town would continue to grow to about 140,000 by the end of the Century.

In December, 1966 the Minister said he thought it right that provision should be made within the designated area for the natural increase of population now expected as well as for some increase over present

plans in the numbers to be received from London.

At a public inquiry there were particularly strong objections to the proposed new residential neighbourhoods of Kingston Ridge, Hawkesbury and to a lesser extent Longwood in the south-western part of the town, in view of their proximity to important areas of public open space.

A letter to the Corporation giving the Minister's decision states that it is right that Basildon should continue to make a contribution to relieving the housing needs of London and that there should be further development there.

But the Minister considers that Kingston Ridge and Hawkesbury should not be developed, but kept as a buffer of countryside between the built-up area of the town and the public open spaces to the south. He accordingly agrees with the Inspector that these proposals should be deleted from the plan.

Subject to this (and a number of other points reserved in the decision letter), the Minister approves the Corporation's Master Plan as a suitable guide for the further development of the Town.

The division of the two neighbourhoods of King-

## PREACHED SERMON FOR A GUINEA

SINCE 1617 the John Puckle sermon has been preached at St. Nicholas' Church, Laindon, on December 27th—but this week history was made.

For Deaconess Pat Colton became the first woman to earn the fee of one guinea for preaching the sermon at the hilltop church.

Puckle left land which was sold for £557 and the money invested in a charity. This capital is still held in trust and the interest of £18 18s. 4d. used every year.

It goes to help poor parents pay for their children's education and provides food for needy people... even in these years of the Welfare State there is still a use for the money.

Originally the money went towards supporting a school-master at a time when part of the church was used as the master's house and schoolroom.

A commemorative tablet at the church says: "Soli Deo Gloria. John Puckle, of this parish by his last will and testament dated May 16, 1617, gave all his copyhold lands to the maintenance of a school-master for teaching a competent number of poor children."

He asked for his will to be marked yearly by the preaching of a sermon on St. John's Day. This is still preached and the fee set by Puckle is paid.

The charity is run by six trustees. It is the primary charity which is still in existence in the parish of Laindon-cum-Basildon.

### DISCLAIMER

Mr. Brian Martin, of 24, Rantree Fold, Basildon, has asked us to point out that he has no connection with a man of the same name, Mr. Rantree Fold, who appeared at Billericay Magistrates' Court last week. A report of those proceedings appeared in our issue of December 22nd.

## THIS IS OUR OPINION

## Comprehensive school queries to be answered

AS BILLERICAY'S two senior schools, the Secondary and Mayflower, will be among those in the urban district to go comprehensive next September, it is nice to note that an organisation which was born in the town and still has its deepest roots there is taking up a question of vital importance to comprehensive-bound children and their parents.

It is the Association for the Advancement of State Education and the subject of importance to parents is the choice of school. For a long time the Association have been pressing for this point to be given earnest consideration by the authorities concerned.

Now it appears from what the Association say that "only the customary half-hearted gesture" towards giving a choice has been made in a letter to parents.

That parents should have a choice and not have to send their children to the school nearest their home is something which must be fought for and won.

And there is no doubt that the Association will put up a hard fight not only for the parents and children of Billericay, but also throughout the urban district.

## 1968—GLOOMY PROSPECTS FOR THE NEW TOWN

NEW YEAR greetings for the New Town from the Minister of Housing this year came in the form of a plea to cut expenditure.

Basildon Council received a letter requesting a tightening of the belt on everything except housing and schools, and the Corporation have received similar instructions.

The cuts come at a time when a decision on the new Master Plan to take the New Town to a 140,000 population is expected any moment. In the last six months the Corporation have been held up because of the long delay in a decision being made on the Plan.

Now they are likely to be held up in implementing it once approval is given by the restriction on expenditure.

The cuts are likely to hit expanding areas like Basildon more than old-established towns who have been managing for years on what they have got.

With no let-up in the housing programme, more and more people in Basildon will now have to suffer longer because of what is missing. It is a situation which all adds up to gloomy prospects for 1968 in the town.

## LONE VOICE STILL CRIES OUT AT WICKFORD

AS THE YEAR 1967 gets ready to go into history a lone voice is heard in the wilderness—a voice which has been heard many times during the past 12 months.

It is that of Wickford housewife Mrs. Eleanor Muckett, and it is raised once again in protest at the state of the town's pavements, particularly those in the main streets.

It would seem that Mrs. Muckett has not had much success with her campaign to get paving stones levelled, cracks in paths filled in and pavements kept clean of mud, for it was not until this month that this newspaper received a complaint other than that of Mrs. Muckett about the same subject.

And this complaint, from the town's Chamber of Trade, has roused Mrs. Muckett to protest again. This time at what she feels is an inaccuracy on the Council's part—the statement that there did not appear to have been any complaints about certain sections of The Broadway pavements.

It is to be hoped that this campaigner will not be the only person, nor her voice the lone one, to speak up in the coming year about the state of the pavements, or, for that matter, any other subject which affects the public at large.

In fact, it would be far nicer if, because of quick, efficient action, there was no need for any voice to be raised in protest or complaint in the 12 months beginning on Monday next.

But that must be too much for which to hope!

## There is co-operation with the Council

COMPLAINTS that building contractors D. A. Moody, Ltd., have been dumping concrete, wood, iron, bricks and old furniture on a piece of waste land off Norsey Close, Billericay, have been investigated by Mr. Eric Moonman, M.P.

Moody's were given permission to fill in low areas on the waste land with topsoil, subsoil, sand and ballast by the Ministry of Housing and Local Government at an inquiry in September, 1966.

Soon after tipping started, however, Norsey Close residents complained to Basildon Council and Mr. Moonman that the Ministry's conditions were being ignored, lorries were breaking up the pavement and the Close was being showered with mud and dust.

The Council repeatedly warned the firm to stick to the Ministry's agreement, but they only complied with the warnings for a few days before reverting to their old practice of racing up and down the road, driving on the pavement and spilling mud as they went, until the Ministry went, alleging the residents in a letter to Mr. Moonman.

After visiting the site, Mr. Moonman took the matter up

with Basildon Town Manager Mr. David Taylor, who replied that there was some justification for the complaints. The Council had since protested to the Company and further investigations revealed that only the authorised materials had been tipped from the beginning of September this year, he said.

Complaints about mud on the Highway and damage to the pavement in Norsey Close had also been taken up with the contractors and they had reconditioned several areas in the pavement. It was also evident, said Mr. Taylor, that a man was being employed almost full-time to remove mud and clay from the road.

Other complaints referred to noise, unauthorised tipping by other companies, obstruction by lorries close by lorries waiting to enter the site, damage to trees on the site, and the fact that no time limit was imposed by the Ministry for the completion of the tipping operations.

"Each of these complaints has been investigated and there is no evidence of unauthorised companies tipping materials on the site," said Mr. Taylor.

"There is an access to the site other than Norsey Close, but the Minister did not specify which access was to be used and as it is a public highway the company have every right to use it."

"As the Close is only about 10ft. wide with a 6ft. wide footpath, it is possible that obstruction could be caused by parked vehicles, but the Council know of only one occasion when there has been an obstruction," he said.

"Regarding complaints of damage to trees, the Council have given an assurance that it is their intention to preserve as many as possible."

It has been noted that certain trees have had their lower branches topped, but this was necessary for the tipping to take place," said Mr. Taylor.

"A more recent complaint has also been made about the laying of hardcore on the site, but investigation has proved this necessary to prevent vehicles from getting bogged down. It is thought this will also reduce the amount of mud and clay deposited on the road."

"It appears that the company are co-operating with the Council in dealing with the complaints as they arise. Regular inspections have been and will continue to be made, and the position kept under close review," concluded Mr. Taylor.

# MILLIE'S

## FASHIONS BRIDALWEAR

# SALE

Starts  
Today  
Saturday

**DRESSES** from 10/-  
**COATS** - from £1  
**SUITS** - from £1

**REDUCTIONS ON ALL BRIDALWEAR  
BOUGHT DURING SALE**

*Bargains Galore —*

*Come early to avoid disappointment!*

**6 SOUTH WALK, BASILDON, ESSEX**

Facing Main Bus Terminus

Telephone: BASILDON 21852

**OPEN UNTIL 6.30 p.m. ON FRIDAYS**

## Basildon Master Plan, Government decision **APPROVED, BUT POPULATION IS REDUCED**

**BASILDON'S** new 140,000 population Master Plan has been approved by the Minister of Housing except for the two controversial housing neighbourhoods which were planned in the beauty spot area of Langdon Hills.

The Minister's decision, announced as the "Standard Recorder" went to press yesterday (Friday), means that the deletion of the neighbourhoods Kingston Ridge and Hawkesbury—both on the Thurrock, or south side, of Dry Street, Langdon Hills—reduces the plan's ultimate population by 6,600 people.

The existing plan allows for a total population of 106,000. Following the South-East Study the Corporation were asked to examine the possibility of further growth. They concluded that about 140,000 people could be accommodated in the existing designated area.

Their revised Master Plan, submitted in August, 1966, proposed additional residential neighbourhoods, a further area for industrial development, some new roads and public open space areas and major extensions of the shopping and business centres at London and Elkes.

It is proposed that planned immigration from London should continue until about 1976 when the population would be around 103,000, after which the town would continue to grow to about 140,000 by the end of the century.

In December, 1966 the Minister said he thought it right that provision should be made within the designated area for the natural increase of population now expected as well as for some increase over present

plans in the numbers to be received from London.

At a public inquiry there were particularly strong objections to the proposed new residential neighbourhoods of Kingston Ridge, Hawkesbury and to a lesser extent Longwood in the south-western part of the town, in view of their proximity to important areas of public open space.

A letter to the Corporation giving the Minister's decision states that it is right that Basildon should continue to make a contribution to relieving the housing needs of London and that there should be further development there.

But the Minister considers that Kingston Ridge and Hawkesbury should not be developed, but kept as a buffer of countryside between the built-up area of the town and the public open spaces to the south. He accordingly agrees with the Inspector that these proposals should be deleted from the plan.

Subject to this (and a number of other points reserved in the decision letter), the Minister approves the Corporation's Master Plan as a suitable guide for the further development of the town. The division of the two neighbourhoods of King-

(Continued on Page 6)

## PREACHED SERMON FOR A GUINEA

SINCE 1617 the John Puckle sermon has been preached at St. Nicholas' Church, Laindon, on December 27th—but this week history was made.

For Dancowen Pat Cotton became the first woman to earn the fee of one guinea for preaching the sermon at the hilltop church.

Puckle left land which was sold for £357 and the money invested in a charity. This capital is still held in trust and the interest of £18 18s. 4d. used every year.

It goes to help poor parents pay for their children's education and provides food for needy people—even in these years of the Welfare State there is still a use for the money.

Originally the money went towards supporting a schoolmaster at a time when part of the church was used as the master's house and schoolroom.

A commemorative tablet at the church says: "Soli Deo Gloria. John Puckle, of this parish by his last will and testament dated May 16, 1617, gave all his copyhold lands to the maintenance of a schoolmaster for teaching a competent number of poor children."

He asked for his will to be marked yearly by the preaching of a sermon on St. John's Day. This is still preached and the fee set by Puckle is paid.

The charity is run by six trustees. It is the primary charity which is still in existence in the parish of Laindon-cum-Basildon.

### DISCLAIMER

Mr. Brian Martin, of 24, Rantree Fold, Basildon, has asked us to point out that he has no connection with a man of the same name, also of Rantree Fold, who appeared at Billericay Magistrates' Court last week. A report of those proceedings appeared in our issue of December 22nd.

## THIS IS OUR OPINION

## Comprehensive school queries to be answered

AS BILLERICAY'S two senior schools, the Secondary and Mayflower, will be among those in the urban district to go comprehensive next September, it is nice to note that an organisation which was born in the town and still has its deepest roots there is taking up a question of vital importance to comprehensive-bound children and their parents.

It is the Association for the Advancement of State Education and the subject of importance to parents is the choice of school. For a long time the Association have been pressing for this point to be given earnest consideration by the authorities concerned.

Now it appears from what the Association say that "only the customary half-hearted gesture" towards giving a choice has been made in a letter to parents.

That parents should have a choice and not have to send their children to the school nearest their home is something which must be fought for and won.

And there is no doubt that the Association will put up a hard fight not only for the parents and children of Billericay, but also throughout the urban district.

## 1968—GLOOMY PROSPECTS FOR THE NEW TOWN

NEW YEAR greetings for the New Town from the Minister of Housing this year came in the form of a plea to cut expenditure.

Basildon Council received a letter requesting a tightening of the belt on everything except housing and schools, and the Corporation have received similar instructions.

The cuts come at a time when a decision on the new Master Plan to take the New Town to a 140,000 population is expected any moment. In the last six months the Corporation have been held up because of the long delay in a decision being made on the Plan.

Now they are likely to be held up in implementing it once approval is given by the restriction on expenditure.

The cuts are likely to hit expanding areas like Basildon more than old-established towns who have been managing for years on what they have got.

With no let-up in the housing programme, more and more people in Basildon will now have to suffer longer because of what is missing.

It is a situation which all adds up to gloomy prospects for 1968 in the town.

## LONE VOICE STILL CRIES OUT AT WICKFORD

AS THE YEAR 1967 gets ready to go into history a lone voice is heard in the wilderness—a voice which has been heard many times during the past 12 months.

It is that of Wickford housewife Mrs. Eleanor Muckett, and it is raised once again in protest at the state of the town's pavements, particularly those in the main streets.

It would seem that Mrs. Muckett has not had much success with her campaign to get paving stones levelled, cracks in paths filled in and pavements kept clean of mud, for it was not until this month that this newspaper received a complaint other than that of Mrs. Muckett about the same subject.

And this complaint, from the town's Chamber of Trade, has roused Mrs. Muckett to protest again. This time at what she feels is an inaccuracy on the Council's part—the statement that there did not appear to have been any complaints about certain sections of The Broadway pavements.

It is to be hoped that this campaigner will not be the only person, nor her voice the lone one, to speak up in the coming year about the state of the pavements, or, for that matter, any other subject which affects the public at large.

In fact, it would be far nicer if, because of quick, efficient action, there was no need for any voice to be raised in protest or complaint in the 12 months beginning on Monday next.

But that must be too much for which to hope!

## There is co-operation with the Council

COMPLAINTS that building contractors D. A. Moody, Ltd., have been dumping concrete, wood, iron, bricks and old office furniture on a piece of waste land off Norsey Close, Billericay, have been investigated by Mr. Eric Moonman, M.P.

Moody's were given permission to fill in low areas on the waste land with topsoil, subsoil, sand and ballast by the Ministry of Housing and Local Government at an inquiry in September, 1966.

Soon after tipping started, however, Norsey Close residents complained to Basildon Council and Mr. Moonman that the Ministry's conditions were being ignored. Complaints were being made that the Close was being showered with mud and dust.

The Council repeatedly warned the firm to stick to the Ministry agreement, but they only complied with the warnings for a few days before reverting to their old practice of rearing up and down the road, driving on the pavement and spilling mud as they went. The residents in a letter to Mr. Moonman, after visiting the site, Mr. Moonman took the matter up

with Basildon Town Manager Mr. David Taylor, who replied that there was some justification for the complaints.

The Council had since protested to the Company and further investigations revealed that only the authorised materials had been tipped from the beginning of September to this year, he said.

Complaints about mud on the highway and damage to the pavement in Norsey Close had also been taken up with the contractors and they had reconstructed several days in the pavement. It was also evident, said Mr. Taylor, that a man was being employed almost full-time to remove mud and clay from the road.

Other complaints referred to noise, unauthorised tipping by the Company, obstruction by lorries waiting to enter the site, damage to trees on the site, and the imposition by the Ministry of the completion of the tipping operations.

"Each of these complaints has been investigated and there is no evidence of unauthorised companies tipping materials on the site," said Mr. Taylor.

"There is an access to the site other than Norsey Close, but the Minister does not specify which access was to be used and as it is a public highway the company have every right to use it."

As the Close is only about 13ft. wide, said Mr. Taylor, it is possible that obstruction could be caused by parked vehicles, but the Council know of only one occasion when there has been an obstruction, he said.

"Regarding complaints of damage to trees, the Council have given an assurance that it is their intention to preserve as many as possible."

It has been noted that certain trees have had their lower branches lopped, but this was necessary for the tipping to take place, said Mr. Taylor.

A more recent complaint has also been made about the laying of hardcore on the site, but investigation has proved this necessary to prevent vehicles from getting bogged down. It is thought this will also reduce the amount of mud and clay deposited on the road.

"It appears that the company are co-operating with the Council in dealing with the complaints as they arise. Recent inspections have been and will continue to be made, and the position kept under close review," concluded Mr. Taylor.



# MILLIE'S

## FASHIONS

## BRIDALWEAR

# SALE

Starts Today Saturday

DRESSES from 10'—

COATS - from £1

SUITS - - from £1

REDUCTIONS ON ALL BRIDALWEAR BOUGHT DURING SALE

Bargains Galore — Come early to avoid disappointment!

**6 SOUTH WALK, BASILDON, ESSEX**

Facing Main Bus Terminus Telephone: BASILDON 21852

OPEN UNTIL 6.30 p.m. ON FRIDAYS



Wickford Methodist Church Young Wives' Guild held a children's party at the Church Hall last week.



THESE LADS ARE OBVIOUSLY ENJOYING THEMSELVES AT THE CHRISTMAS PARTY HELD BY BILLERDAY AIR TRAINING CORPS AT THEIR HEAD-QUARTERS LAST WEEK.

WHERE DID THEY GET THOSE HATS?



ONE OF THE PRE-CHRISTMAS EVENTS AT SUNNYMEDE JUNIOR SCHOOL WAS A FANCY HAT COMPETITION.

OUR PICTURE ABOVE SHOWS THE THIRD-YEAR WINNERS—VIVIANE CHADWICK, SUSAN SYKES AND PAUL VINCENT.



## "NEWCOMERS" STAR WITH NEWLYWEDS

ONE OF THE guests at the Wickford wedding of Miss Lesley Marshall on Saturday was Raymond Hunt, known to TV viewers as Lance Cooper, of "The Newcomers."

Lesley, who is the daughter of Mr. and Mrs. G. T. Marshall, of Woolshots Road, is Raymond's cousin. She was married to Mr. Frederick William Llewellyn, son of Mr. and Mrs. Charles Llewellyn, of Holst Avenue, Laindon. The service took place at the Baptist Church, Ramsden Bellhouse, and was conducted by Rev. A. E. Bennett.

The bride was given away by her father, and wore a full-length gown of white brocade. A coronet headdress held her long veil, and she carried a bouquet of pink roses.

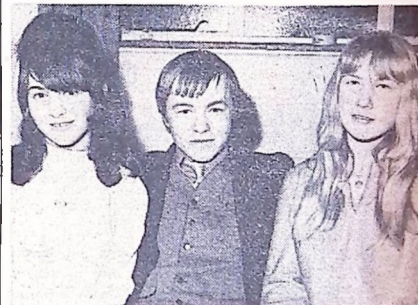
Bridal attendants were the Misses Jennifer Marshall, bride's sister, Gladys Llewellyn, bridegroom's sister, and Jacqueline Searle, cousin.

Page boys were Clive Marshall, bride's brother, and Paul Foyle, who wore blue, military-style suits. The bridegroom's brother, Charles, was best man. The couple are spending their honeymoon in Yorkshire.

The pictures of the bride and bridegroom and Lance Cooper with friends at the reception were taken by Stan Caldwell.

## Correction

We are asked to state that in a Court case reported last week, under the heading "Fined £15," the name of the defendant should have been Edwin Houghton and not Edward Houghton.



LET 'CHANNEL' JET YOU TO THE SUN FROM SOUTHEND AIRPORT



MEDITERRANEAN HOLIDAYS by

Have fun in the Mediterranean sun—and start it with a jet flight from your own local SOUTHERN AIRPORT. This year the Directors of Mediterranean Holidays have carefully selected the top ten holiday resorts of the sun-drenched Mediterranean to offer you fabulous, carefree holidays—and at prices all can afford! The price includes your flight by Continental Golden Trident or B.A.C. One-Eleven pure jet aircraft of our parent company Channel Airways from Southend or London (Stansted) airport—and a bedroom with private bath at a seafront hotel—so send for your full colour brochure today!

MALTA FROM 48½ GNS  
MAJORCA FROM 33 GNS  
TUNISIA FROM 60 GNS



FROM SOUTHEND AIRPORT

ITALY FROM 27 GNS  
SPAIN FROM 29 GNS  
CANARY ISLANDS FROM 69 GNS

mediterranean holidays Ltd

A CHANNEL AIRWAYS COMPANY

Tel: SOUTHERN 63515 (5 lines)  
OPEN MONDAY to SATURDAY until 8.30 p.m.



UP TO 50 DAILY ONE-ELEVEN JET AND PROP-JET SCHEDULED SERVICE FLIGHTS FROM SOUTHERN AIRPORT DIRECT TO

PARIS FROM £13/12s RETURN  
OSTEND FROM £8/16s RETURN  
ROTTERDAM £17/18s RETURN  
JERSEY GUERNSEY FROM £6/0s SINGLE  
EAST MIDLANDS FROM £3/6s SINGLE

SOUTHERN AIRPORT, ESSEX Tel: 40334

See your holiday airliners on show at Southern Airport—FREE—this Sunday 11 a.m.-5 p.m.

POST THIS COUPON TODAY!

To: AIRWAYS HOUSE, 95 SOUTHCHURCH ROAD SOUTHERN-ON-SEA OR SOUTHERN AIRPORT  
Please send me FREE details of holidays and flights to:

NAME \_\_\_\_\_

ADDRESS \_\_\_\_\_

or see your local A.B.T.A. agent

C

# A PAGE ABOUT OLD PEOPLE



## Christmas card wedding—50 years ago

FIFTY years ago on Christmas Day Frank and Edith White (seen above) went to church to be married.

This year, as they celebrated their golden wedding, they looked back on more than a marriage. For their teamship has made them "pop" stars among the O.A.P. clubs in the Basildon district.

Their Rectory Road, Pitsea, home is known as Frank and Edith's base, from where they travel with a unicorn and a set of drums to entertain pensioners' clubs.

Frank (70) and Edith (72) were married in a Christmas card setting with thick snow and a horse-drawn vehicle to take them from the church.

They could have had a new-fangled motor vehicle, said Edith, but it was wartime and petrol was scarce. They came to live in Pitsea in 1928 and in those days, they recall, Rectory Road was a pretty avenue of trees. But, socially, there was a complete void and this was how the Whites came to take up music. They bought their instruments and taught themselves to play. Then they began organising activities in the district—especially at St. Michael's Hall.

During the last war their daughter Olive then only 14, opened a dancing school, which came to be known as Olive White's Juveniles. Frank and Edith provided the music and their other daughter, Norma, provided dressmaking know-how.

The combination then set about entertaining for many charities and the troops. They produced pantomimes and shows at Pitsea Cinema.

Frank, who retired from the Gas Board in 1960, was born in Pietermaritzburg, South Africa, where his father served with the 7th Hussars.

Christmas weddings are not the vogue these days, but Edith thinks they should be. "I think Christmas Day is a beautiful time to get married," she said. "I also think Sunday would be a good day, but apparently nobody else does."



Mr. and Mrs. Everest, of Alderney Gardens, Wickford, celebrated their golden wedding on Christmas Day—their last issue. Mrs. Everest made the celebration cake.

## Their Christmas festivities



We give pictures on this page of some of the many dinners arranged for pensioners in the pre-Christmas week. That above was taken at the Shotgate O.A.P. branch dinner at the Community Centre, and the picture below was a scene at the Lee Chapel North O.A.P. dinner.



Basildon No. 1 O.A.P. (seen above) held their Christmas party in the Pemberry Hall, and (below) members of Billericay O.A.P. are seen at their Christmas dinner in the Women's Institute Hall.



## Priority Club

Christmas dinner, with a small gift for each diner, was the highlight of the work done by Wickford Old People's Welfare Committee at their Priority Club in Southend Road, Wickford, over the past three months. During this time some 851 lunches have been supplied from George Hurd Centre, Basildon, and served to retired people living in the Wickford area. Mrs. B. Ankew, Secretary of the Welfare Committee, and the Committee thank tradespeople and others who help in this venture. Thanks are also due to the local schools who provided Christmas parcels and to the willing band of voluntary helpers at the Club, without whom it could not function. The Committee would also like it known that the Priority Club is open to all retired folk living in Wickford and district, and visitors to the town are likewise welcome, provided only that they are retired.

## A CELEBRATION

Tes and fancy cakes to celebrate their Golden Wedding were provided for members of Pitsea branch by Mr. and Mrs. Frank White. On behalf of members, Chairman Mr. A. Judge presented them with a pot of chrysanthemums. Various items were raffled for branch funds, including a doll's house, made by Mr. Dallas; everyone enjoyed a slice from the Christmas cake given to the branch by Carnival Queen Geraldine Gahan. A selection of music from a show and some carols were played by Mrs. Nobbs.

# People — and what they are doing...

## Schoolboy campanologist



WHEN the bells of St. Mary's peal loud and clear over Langdon Hills there are few Englishmen who would not change places with the bellringers.

But to fill the shoes of Kevin Lucas you would probably have to step into size three, for he is only eight.

And as tons of metal crash and bang in the belfry, down below, pulling the ropes, Kevin savours the sound.

He is one of the country's youngest bellringers, a campanologist extraordinary who dislikes football.

Kevin, who has been playing the bells for about a year, doesn't even belong to St. Mary's Church. He belongs to a Free Church in Basildon, but his father, Mr. Gordon Lucas, teaches bellringing at the church.

Kevin lives in Falstones, Lee Chapel North, and goes to Bluehouse School.

Says Kevin: "Some of my friends think I am a bit odd because I like bellringing rather than football, but this doesn't worry me at all. I spend most of my time explaining all about bellringing and when I have explained that's the end of it."

He has played bells at many other churches, including Orsett, Fobbing, Waltham Abbey and Shenfield. He is also a philatelist.

★ ★ ★

FIFTY-FIVE years of happy married life were celebrated on Boxing Day by Mr. Thomas Willoughby Turnill and his wife, Elsie May, of Wick Lane, Wickford.



## HE GAVE UP BUSINESS TO BECOME A PARSON

FOR TWO years Mr. Barry Williamson (seen above), a successful business man, fought a desire to become a parson.

"I couldn't understand it," he said. "I had a good job, a wife and four children to support, and I was quite happy to stay as I was until I received God's calling."

"I tried to put it out of my mind, but after two years I finally had to admit that God wanted me to serve Him and there was nothing I could do to stop myself."

He threw up his job as an import/export company departmental manager and went to Wyck Hall, Oxford, where he studied theology for two years.

Ordained at Chelmsford in 1962, he became curate of Christ Church, Billericay.

Now Rev. B. Williamson (46), of Norsey Road, is preparing to move to Brentwood because in March he becomes Vicar of St. Paul's Church, Bentley Common.

"I shall be extremely sorry to leave Billericay and our new church," he said. "At first, when I was offered this new job in Brentwood I was torn between the two, but I am just beginning to feel a little excited about the prospect of a new parish."

St. Paul's is a much smaller but more widely scattered parish than Christ Church. He is, however, particularly sorry to be leaving Billericay because he has been instrumental in raising money for the new church, which he said: "Has made a

terrific difference to our situation in Christ Church. When I first came to Billericay we had to make do with a small timber and iron building, and we have taken a great step forward with the construction of the new church."



## Goodbye to Corporation employees

NOW MR. G. W. McCLELLAN HAS RETIRED FROM WORK WITH BASILDON COUNCIL HE HAS MORE TIME FOR G3PRZ — THIS IS HIS AMATEUR RADIO CALL SIGN.

Every morning at 7.15 he transmits from his Bromfords Close, Wickford, home.

Mr. McClellan's other hobbies are fishing and painting... "and holidays," he added quickly.

Council Chairman Coun. A. Baron Burn said farewell to Mr. McClellan and another employee, Mr. Edgar Copeland, at a small party in the Council Offices.

Mr. McClellan has been with the Council since 1945, first as a war damage inspector and then a building inspector.

For Mr. Copeland, aged 65, work with Basildon Council started in 1932. He has worked his way up to Sewage Works Supervisor in charge of the town's five works.

But he is not making a complete break with Council life as he has been re-engaged for a further 12 months. He lives at School Road, Billericay.

At the Council employees' retirement party: Mr. E. Copeland, Mr. G. W. McClellan, Engineer and Surveyor Mr. S. A. Wadsworth and Council Chairman A. Baron Burn with his wife.

## Father Christmas of Vange



FORMER school caretaker Mr. A. Simms was Father Christmas to all the children at Vange Primary School at their parties this year. He is seen with Brian Packham (7) and Debra Pithers.

Before breaking up, staff and children raised £6 carol singing on two evenings round the houses on Basildon Council's Vange Estate. With the money they bought a toy which was presented to the children's ward at St. Andrew's Hospital, Billericay.

## Bingo bread pudding!

IN THE DAYS when thrift was a virtue and every penny counted, an ingenious Englishman invented bread pudding.

Marmalade and jam leftovers, sugar, fruit and spice, and the basics of the dish, stale bread pieces, were deftly mixed to produce it.

In Ghyllgrove they know its pleasures well. For at the Community Association Bingo sessions Mrs. Florence Rand treats every-



Mrs. Rand mixing a bread pudding.

one to a slice of its delight. It started when a Ghyllgrove family were leaving the district. Mrs. Rand's pudding enthralled them and at their last Bingo session she took along a steaming dish of bread pudding.

Said Mrs. Rand, who lives in Butneys: "After that it became a custom. Everybody liked it so much that they asked me to bake one for every meeting."

When her son was in the Army she used to send bread puddings by post all the way to Scotland. Even now, her son who lives at Laindon travels to Ghyllgrove when Mum is cooking bread pudding.

She calls her recipe Bingo Bread Pudding. And in this month's issue of the Community Association magazine she gives the recipe. The ingredients, she says, include: A mother's pride with the spice of life; milk of human kindness; pinch of salt for good luck and the fruits of labour.

# WHATEVER your holiday choice....

Consult —

## TRAVEX TOURS LTD

the County's  
Leading  
Travel Agency

AT

27 HIGH STREET, BILLERICAY  
Telephone 51112



Also at

GRAYS • CORRINGHAM • TILBURY • HORNBURCH • BRENTWOOD • EAST HAM  
CHINGFORD • LOWESTOFT • CITY

123 HIGH STREET, RAYLEIGH  
AND  
Telephone 6245

DEVALUATION NEED BE NO PROBLEM. MANY HOLIDAYS ARE UNAFFECTED, CALL ON US TODAY FOR  
Free Brochures — Free Expert Advice — Personal Service

# FAREWELL TO THE WARDEN



A farewell presentation was made to Mr. Jeff Munday, retiring Warden of Nicholas' Youth Centre. It was made by Miss Joan White, and also in the picture are Mr. J. T. Edmondson, Basildon Youth Officer Mr. R. Petty, Mr. J. Shove (the new Warden), Mr. D. Reeves (Chairman of the House Committee) and Mr. Bill Davies.

## THEY HAVE HELPED TO PRESERVE BILLERICAY

JUST ENTERING their 33rd year of existence and growing in membership as the years roll by are Billericay Group of the Council for the Preservation of Rural England, who have their headquarters at the Coter Museum, High Street.

The Group were founded in 1935 when a few public-spirited people met to arrange some means of marking the jubilee of King George V.

It was decided to plant a number of trees, some of which still stand on the bank opposite the Police Station, to show the small beginnings of what is now an important local organisation, with members keenly interested in protecting the natural amenities of the district.

The coronation of King George VI was marked by the still young Group with more tree planting, this time in Lake Meadows.

### VIGILANCE

Members proudly claim that it is due to their vigilance and efforts over the past 30 years that Billericay and its surroundings still retain a charm and character which makes it second to none as the most desirable residential district between London and the coast.

Among achievements in the past, particularly since the end of the last war and the expansion of Billericay, the Group numbers its booklet, "A Plan for Billericay," suggestions from which have been adopted by the planning authorities; the town sign on the green in London Road, the instigation of the book "Billericay and its High Street" and representations to local authorities on matters affecting the town and its environs.

Latest move of the Group has been representations on the Basildon Council's High Street plan. Members agree with the principle of making the centre into a pedestrian precinct, but they are not in favour, as was originally suggested, of building across the street. It would, they feel, destroy its natural character.

Membership of the Group, which has a junior section, is open to all who are in sympathy with its aims and objects, which are threefold.

They are:—  
• To protect and safeguard from disfigurement or injury the appearance, the rural scenery, the amenities and

the features of local interest in and around the township of Billericay;

• To foster co-operation with local authorities, local and other associations and landowners and all other persons interested in the aims and objects of the Group; and

• To give and obtain advice and information about all matters which affect development and the preservation of the beauty of the town and its surrounding countryside.

## Master Plan decision

(Continued from Page 2)

ston Ridge and Hawkesbury reduces by some 6,600 the total provision in the Plan related to the very long-term population forecast of 140,000, but will not immediately affect the Corporation's proposal that planned immigration should continue until the population rises to 103,000 by about 1976.

Special mention is made in the Inspector's report to the Minister of the strong case put up by Laindon Residents' Protection Association and resident Mr. Arthur Hollands against the development proposals for Laindon Hills.

Undoubtedly, their efforts helped persuade the Minister to delete Kingston Ridge and Hawkesbury from the Plan.

In his comments on housing densities, the Minister states that an average net density of 16 dwellings to the acre is reasonable as a guide for the Corporation. But he points out that it will not be possible to adhere to it in all areas if the demand for dwellings suitable for higher income groups and for owner-occupation is to be met.

The Inspector supported the suggestion that the possibility of extending the New Town designated area should be examined to compensate for the deletion of the two Laindon Hills neighbourhoods, but the Minister disagrees. He believes the present area will enable the Corporation to complete their task and accommodate substantial growth thereafter.

## Keep toilets

HAVING heard the waiting room and toilet facilities at Battlesbridge and Woodham Ferring stations are being withdrawn, the local Rail Users' Association has asked Chelmsford Rural District Council to take over and maintain the toilets as public conveniences.

The Council have asked British Rail for details of the proposed withdrawals.

The Thursday Darby and Joan Club held their eighth annual Christmas party in Fryerns Community Centre last week.

## Friends raise £118

THE RUNWELL Hospital League of Friends raised about £118 from their Christmas sales held at the Hospital's recreational hall and in Wickford Market.

Many of the articles sold were made by local women's organisations and church organisations throughout the area. Members of the organisations also manned the stalls. The first sale was held at the Hospital Hall on Thursday. Visitors, staff and patients found good value in the articles and many of the stalls were sold out after a short time.

### RAISED £70

The Christmas draw organised by Basildon branch of the Samaritans raised over £70. Most of the prizes were given by local traders.



## No surfing this Christmas Day

CHRISTMAS THIS year for Mr. and Mrs. Harry Russell, of Noak Hill Road, Billericay, was just the same as most people's—Christmas pudding, turkey, party hats and a roaring hot fire.

But the Russells (seen above) are used to a very different way of celebrating December 25th. They usually pack up a chicken salad, run to the beach early in the morning and spend the day surfing and basking in the sun.

Christmas pudding on the beach might not be everybody's cup of tea—but if you were New Zealanders, like Mr. and Mrs. Russell, you would probably take it in good heart.

Harry and his British-born wife, Sandra, came to Billericay just before Christmas to visit Sandra's parents. The trip, they say, is a "working holiday" and they intend staying here about three years before returning to Auckland.

Sandra, aged 24, who used to live in Surrey until emigrating with her parents when she was eight years old, is a secretary.

Speaking of Christmas in New Zealand she said: "Snow at Christmas time is just a dream... because in Auckland it is coming up to the hottest time of the year—in the mid-70's."

Her first impression of Bri-

tain as she walked down the gang-plank of the 23,000-ton liner Orca at Southampton? "It was so cold... and snowing."

But Sandra is very impressed with Britain, the "strange buildings," volume of traffic and bare trees have had the greatest impact on her. She says buildings in New Zealand are composed mainly of glass, there are fewer cars and many of the trees are green all year round.

Her six-week journey to Britain was via the Panama Canal. Among the places she visited were Vancouver, San Francisco, Trinidad and Fiji.

Harry, aged 28, an architect, was born in New Zealand and visited Britain once before when he represented his country at soccer in a three months' world tour. This was in 1963.

Two members of the family have yet to join them—Pancho, Sandra's Alsatian dog, and Mitzi, a pet poodle, who are in quarantine for six months at Southampton docks. Sandra visits them every Friday.

## Review the pool prices

TOWN charges controversy at Basildon swimming pool has been taken up by Billericay Member of Parliament Eric Moonman.

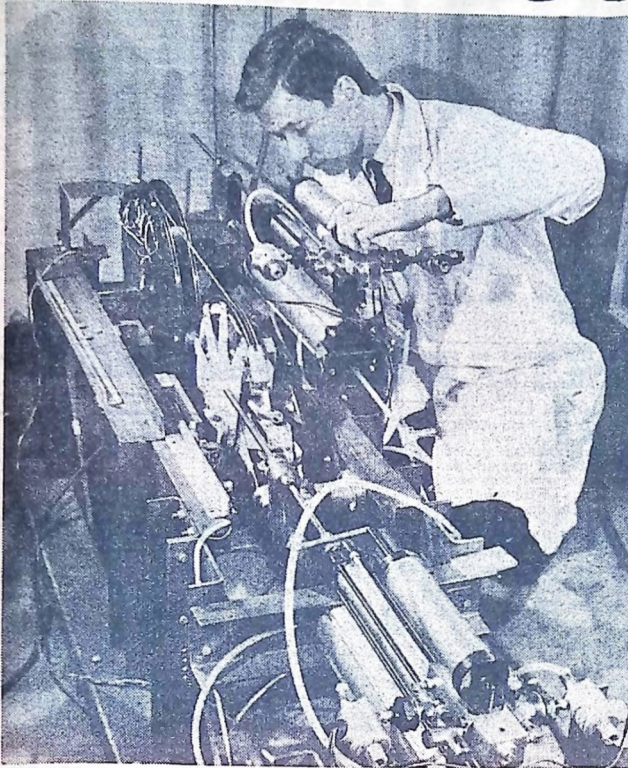
He has told Town Manager David Taylor: "I must say that I consider the comparison with some other baths rather supports my concern about the proposed charges."

Mr. Moonman suggests that a major analysis of costs be made after the baths have been running for about six months, "so that it will be possible to relate the estimates and actual return."



Janet Duke Junior School, Markham's Chase, Basildon, held a concert in the school hall last week.

# FACTORY GOSSIP



A CABLE TENSION REGULATOR FOR THE CONCORDE UNDERGOING ENDURANCE TESTS AT THE BASILDON FACTORY OF TELEFLEX PRODUCTS, LIMITED. THE COMPANY ARE SUPPLYING NINE SUCH UNITS FOR EACH AIRCRAFT, THREE OF WHICH ARE FOR THE AILERON, RUDDER AND ELEVON CONTROLS TO COMPENSATE FOR THE EXPANSION AND CONTRACTION EFFECTS OF TEMPERATURES BETWEEN +70°C and -50°C. TESTS SIMULATE STRESS CONDITIONS OF UP TO 45,000 FLYING HOURS. THE SIX OTHER TELEFLEX REGULATORS USED ON THE CONCORDE ARE FOR THE PARKING BRAKE, ENGINE THROTTLE CONTROL AND UNDER-CARRIAGE FREE-FALL CONTROL SYSTEMS.

## Their work started at 4 a.m. Christmas Day

SOME OF THE people who worked hard over Christmas were the staff of the Milk Marketing Board depot at Radford Crescent, Billericay. "They seem to enjoy working over holiday periods," said Depot Manager Mr. A. Campbell (seen below). "You could say that milk was in their blood!"

The area covered by the Billericay depot includes Braintree, Southend, Chipping Ongar and Stan-ford-le-Hope.

Their main concern is the collection of milk from farms. They have five milk tanks and seven churn vehicles, and visit 218 farms a day, collecting an average of 107,000 gallons of milk per week. Distance covered by the vehicles is between 8,000 and 9,000 miles a week. The only thing that is likely to hold them up is the weather. "I am hoping this winter will not be as severe as in '63 when not only the milk

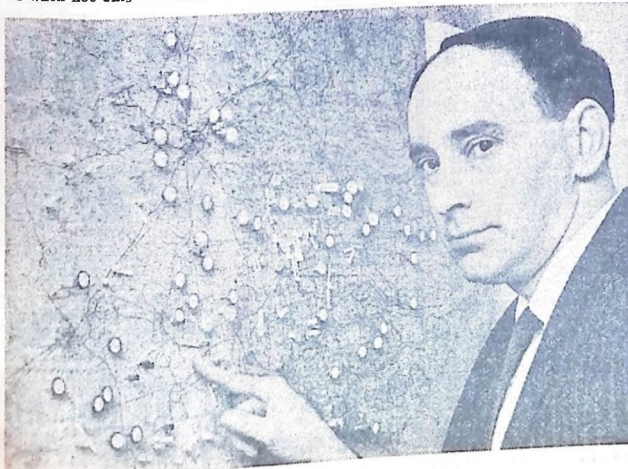
but the diesel fuel froze!" Mr. Campbell told the "Standard Recorder."

His staff of 18 began work at 4 a.m. on Christmas morning, as they have done ever since the depot opened in 1953.

The majority of the drivers have been with the Board for many years, and one, Mr. Bill West, remembers the times when he drove vehicles with solid tyres and carbide lamps.

"We have a very good staff here," said Mr. Campbell, "and they all realise the job has to be done, and that they have to work during all the holiday periods."

Mr. Campbell has been with the Board since 1961, and before that was involved with the transportation of petroleum. He has lived at Norsey View Drive, Billericay, since 1959, and before that lived at Hutton. He and his wife, Marjory (40), have one son, Peter, who is 14 years old and a pupil at the Mayflower School.



DEPARTMENT manager at Ilford's Photographic, Mr. A. F. Eve, of the X-ray, Optical Filters and Photographic Safelight Units, retired on Thursday.

Mr. Eve, who has been with the company for 47 years, has been working at Basildon since 1960, when they opened in Christopher Martin Road. He was previously working as a unit manager at Solo Works, Brentwood, for more than 30 years.

Taking Mr. Eve's place in the department is Mr. Patrick Linturn, who lives at Southminster. He is seen above with Mr. Eve.

Mr. Linturn is married and regards the new post as promotion in his field. He has worked at Basildon for five years.

The test equipment section of Marconi's Basildon factory spread their wings last week and held a Christmas party in the works canteen. About 30 employees with friends and relatives turned out to the function, which was the first to be held by the department. A spokesman for the department said, although this was their first joint venture, more social events would be planned.

## HAPPY RETIREMENT



MR. TOM RIDER, OF THE CIGARETTE-MAKING DEPARTMENT OF CARRERAS AT BASILDON, IS LOOKING FORWARD TO RETIREMENT IN THE GARDEN MAKING A GREENHOUSE AND A FISH-POND.

When he left the factory for the last time, having worked there for 43 years, he was presented with a lawn-mower by the General Manager, Mr. L. E. Breffitt.

And just to keep him busier his friends in the cigarette-making department gave him a variety of gifts, including a power drill.

Mr. Rider, who lives in Rayleigh, is not the only Rider to work for Carreras. He has a brother who works for the Rothmans Group, his wife worked there, a son still works there and his brother's family have connections there.

Tom has been with the cigarette makers since 1924, when the machine he

handled turned out 350 cigarettes a minute. Now, the machines "roll, lick and cut" about 1,500 a minute.

"I shall miss the old machines and my work-mates," said Tom. "But I have got plenty of work to do in the garden and I am looking forward to it." Our picture shows (left to right): Mr. Ian Banyard, Manager of the cigarette-making department; Tom Rider; General Manager of Carreras Mr. L. E. Breffitt and Tom's brother, Charles.



## HIS IDEA WON £151

AN IDEA to increase a machine's productivity has earned Mr. John Fisher, of Waldegrave, a £151 reward.

His employers, Standard Telephones and Cables, Ltd., made the presentation at a special ceremony last week. The cheque was handed over by Executive Director Mr. J. Ayres (right in our picture) and Mr. H. Harris (centre), Chairman of the firm's Suggestion Committee.

Mr. Fisher, who is a chargehand, made the suggestion a year ago when he proposed modifying a welding machine. Since then the suggestion has paid off handsomely, saving an extra 50 per cent production from the same machine. But Mr. Fisher, who has two daughters, has won money for his ideas before. This is the fourth idea that has paid off, but this is the largest single sum he has won. And already another idea has been popped into the firm's suggestion box—he hopes that will pay dividends, too!

Said Mr. Fisher: "Everybody has the chance to make suggestions of this sort. A little bit of effort makes a big difference when you are dealing with ideas."





## Your cinemas

**Century, Pitsea**  
Monday for one week. "Bambi" is one of Walt Disney's most charming cartoons. It is a story of romance and adventure told through the medium of the animals in the forest. In particular Bambi, the fawn hero, and his loyal friends Thumper and Flower.

**Odeon, Brentwood**  
"Jungle Book" (Sunday, for seven days) is based on the famous "Mowgli" stories by Rudyard Kipling and tells how Bagheera, the panther, and Baloo, the bear, try to take Mowgli to the man-village to protect him from Shere Khan, the tiger.

**Ritz, Billericay**  
A story of romance and adventure. "Bambi" (Tuesday, for five days) centres around Bambi, a fawn, one of Disney's most delightful creatures, and his two friends, Thumper, the rabbit, and Flower, the skunk.

**Radion, Laindon**  
A spine-chilling thriller. "Revenge of the Blood Beast" will be showing on Sunday and Monday, Tuesday, for five days. "The Magnificent Two" stars the popular comedy team of Erle Morecambe and Ernie Wise. These two become unwittingly mixed up in a South American revolution.

**Odeon, Southend**  
Retained for a second week. "The Jungle Book," based on the famous Mowgli stories of Rudyard Kipling, marks the end of a remarkable Walt Disney era. It tells of the boy Mowgli's adventures as his friends the panther and the bear try to return him to the safety of the man-village in order to protect him from the tiger.

In the picture above are the choir of Crays Hill Primary School, Billericay, who took part in a concert in the new school hall.



him. The picture on the left shows left to right Mr. Harry Moore, Mrs. Alice Moore, Mr. John Moore and his wife Gail.

It was the first overseas trip for 24-years-old Gail, who was thrilled to visit England and her in-laws. The younger Moores spent Christmas in Basildon, but are intending to spend some of their three weeks' holiday visiting Scotland, and, of course, London.

Gail confessed to feeling a little disappointed about the restraint shown by English people regarding Christmas. At home in Toronto, where the streets are decorated with fairy lights, each house vies with its neighbours to have more attractive displays and every dwelling has its Christmas tree, regardless of whether it has children living there or not.

She liked Basildon very much and says that it closely resembles the newer suburbs of Toronto. She and John found the roads very narrow after Canada, where they are nearly all four-lane highways. The first thing to attract Gail's attention was a "real English bobby," on duty at London Road. Like most visitors from across the "merrie pond," she thinks our Policemen are wonderful. Although John visited his parents about ten years ago, this was his first Christmas in England since he emigrated in 1953. He is a purchase agent in a small electronics company.

When we visited the family John was enjoying a cup of English tea from a jumbo-sized cup at least nine inches in diameter. This huge vessel was sent to Mr. and Mrs. Moore by Bill from Canada, but Mrs. Moore found that when it was full of tea she could not lift it. "It's very useful for soup, though," she laughs.

The younger Moores found a great deal of difference in our shops. At home, says Gail, it is a form of family recreation to go out and look at the beautifully dressed windows, with their working models and splendid displays. The climate, however, is similar to that at home, although they can look forward to three months of snow after Christmas.

## THEIR NICEST CHRISTMAS PRESENT

ONE OF the nicest presents ever for Alice and Harry Moore arrived just before Christmas at their home in Paprills, Basildon—their son John, 41, came home from Canada and brought his bride with

## "Nicholas" is claimed

"NICHOLAS," the eight-months-old baby, who captured the hearts of millions after being found wrapped in gift paper in a Rayleigh ladies' lavatory just before Christmas, was identified on Thursday. His real name is Peter Fox and his home address, a farm cottage in Codham Hall Lane, Great Warley, near Brentwood.

### "TIP OFF"

A "tip-off" early in the week led Police to the Brentwood area in their search for the mother.

Then on Thursday a woman—later named as 35-years-old Mrs. Hilda Fox—walked into Brentwood Police Station and declared, "I am the woman you are looking for."

Later the same day she was taken to Basildon Police Headquarters, from where the search had been directed. There she was interviewed by Insp. Colin Woodford who has been in charge of the case, and Woman P.C. Shirley Buxton, who looked after the baby christened "Nicholas" by Police—at Rayleigh.

A spokesman at Basildon said: "The mother is being referred to the E.C.C. Children's Officer. No criminal charges have been preferred against her at this stage. She has been ordered to see us again in a month."

Wearing a tweed coat and coloured headscarf and carrying a picture of the baby which Police had given her, Mrs. Fox left Basildon Police Station just after 7.30 p.m. to return home to Great War-

ley, where she lives with her parents and their 15-years-old son.

In the unit lane all was quiet except for the banging at the rear of the cottage. A light shone in the front room of the Foxes' home, but they refused to answer the door to callers. During the evening Mrs. Fox appeared at an upstairs window, but refused to say anything.

"Nothing can help me for what I have done."

Meanwhile, little Peter was still at the Chelmsford Children's Home, where he spent Christmas.

He is likely to remain here for a while," said a spokesman.

### SISTERHOOD PARTY

It was a time when Wickford Methodist Church, last week, when the Sisterhood and their Christmas social, Gists included Rev. and Mrs. Gimeson and their son, Richard. The programme consisted of recitations by Miss Edwards, a biblical quiz arranged by Mrs. J. Windsor and a musical game arranged by pianist, Mrs. C. Parker. The party finished with carol singing.

## THE RANK CINEMA COLUMN

Lines up the best films of the week

### ODEON

SOUTHEND  
TEL:44434

THURSDAY, DEC. 28, FOR 7 DAYS Open Week 1.10, Sunday 4.0  
— RETAINED FOR SECOND WEEK —

WALT DISNEY presents

## The JUNGLE BOOK

ALL-CARTOON FEATURE in Technicolor  
Weekdays 2.10 5.40 9.10 Sunday 5.0 8.40 (U)

WALT DISNEY presents

## THE ADVENTURES OF BULLWHIP GRIFFIN

RODDY MCDOWALL SUZANNE PLESSETTE KARL MALDEN  
Technicolor Weekdays 3.30 7.05 Sunday 6.35 (U)

Wednesday, January 3: BUMPER HOLIDAY MATINEE FOR BOYS AND GIRLS, 9.30 a.m. Cartoons, Comedies Adm. Ed. 9d.

### RITZ

SOUTHEND  
TEL:6883  
CARPARK FOR CARS

— NOW SHOWING FOR A SEASON —

Separate Performances: Weekdays 2.30 7.30 Open 2.0 7.0  
Sundays 4.0 7.30 Doors Open 3.30 7.0

ALL SEATS BOOKABLE FOR EVENING PERFORMANCES  
Prices: Circle 8/6, 7/6; Stalls 6/6, 5/-

Reduced Prices for Children, Matinees only, Monday to Friday  
O.A.P.'s: Stalls 2/6 and 3/-; Matinees only, Monday to Friday

RODGERS and HAMMERSTEIN'S

## THE SOUND OF MUSIC

Colour by De Luxe (U)  
JULIE ANDREWS CHRISTOPHER PLUMMER

### RITZ

BILLERICAY 961259

Sunday, Dec. 31 Two Days  
Boris Karloff Elizabeth Bergy

## THE SORCERERS

5.15 8.10 (X)  
Adults Only

Vincent Price Michael Rother  
TOWER OF LONDON (A)

Last Complete Programme 6.45

Tuesday, Jan. 2 FIVE DAYS  
— Great Family Entertainment —

Walt Disney's

## BAMBI

Tues./Th./Sat. 2.40 5.40 8.40 (U)  
Wed./Fri. 5.40 8.40 only

Maurice Chevalier Dean Jones

## MONKEYS GO HOME

Last Complete Programme 6.50 (U)  
Note: Matinees Tuesday, Thursday and Saturday at 2.30

### RADION

BASILDON 44880

Sunday, Dec. 31 Two Days  
Barbara Steele

## REVENGE OF THE BLOOD BEAST

Sun. 5.50 8.45 (X)  
Adults Only

Jean-Paul Belmondo  
Claudia Cardinale

SWORDS OF BLOOD

Sun. 4.30 7.10 Mon. 7.0 only (A)

Tuesday, Jan. 2 FIVE DAYS

## MORECAMBE & WISE

THE MAGNIFICENT TWO

5.05 8.20 Mat. Sat. 1.50 (U)

Fred Gwynne Yvonne De Carlo

## MUNSTER GO HOME

Last Complete Programme 6.45 (U)

## PALACE THEATRE LONDON RD. WESTCLIFF

COMMENCED SATURDAY, DECEMBER 23 FOR FIVE WEEKS

MONDAY TO FRIDAY 2.30 and 7.30

SATURDAYS Three Performances Daily — 2.0 5.0 and 8.0

GEORGE LACY ALEXANDER BRIDGE

GERALDINE MORROW

## Robinson Crusoe

KIRBY'S FAMOUS FLYING BALLET

PRICES OF ADMISSION: 8/6, 6/6, 4/6 and 2/6

BOX OFFICE OPEN 10 a.m. to 8 p.m. — Telephone: SOUTHEND 42564

## BE IN STEP! IN THE NEW YEAR!

FOR THAT SOCIAL OCCASION — JOIN OUR

NEW ABSOLUTE BEGINNERS' COURSE!

ALL AGES: FRIDAY, JANUARY 12, 8.30 to 10.30 — 4/6

OVER 25's: TUESDAY, JANUARY 9, 8.30 to 10.30 — 4/6

NEW LATIN-AMERICAN BEGINNERS' COURSE

For All Ages: Comm. FRIDAY, JANUARY 12, 7.30 to 8.30

PRIVATE LESSONS AND CLASSES DAILY Please telephone!

CHILDREN'S CLASS, SATURDAY MORNING, 10.30 to 12 noon

## WESTERN SCHOOL OF DANCING

(opposite rear of Fire Station, High St., Hadelgh) Telephone 559836

## CLIFFS PAVILION

Telephone: SOUTHEND 47382

Box Office Open Daily 10 a.m. to 8 p.m. — Sunday 10 a.m. to 6 p.m.

## WRESTLING

WEDNESDAY, JANUARY 10 at 8 p.m.

ADMISSION 10/6, 8/-, 6/-, 4/-

DALE MARTIN PROMOTIONS LTD. in association with SOUTHEAST CORPORATION

AN INTERNATIONAL HEAVYWEIGHT CLASH

THE GOLDEN GLOVES HOLDER THE DEVONSHIRE DESTROYER

JIM OSBORN V ROY "BULL" DAVIS

OREGON PLYMOUTH

AMERICAN THUNDERBALL PROMISING YOUNG

BILL TORONTO V TERRY RUDD

CHICAGO DUNSTABLE

PLUS SPECIAL FEATURE THE CHAMPION OF KENT

WILDMAN V CHARLIE FISHER

OF BORN ELTHAM

EXPLOSIVE TAG MATCH

JOHNNY KWANGO V TUG HOLTON

LAGOS WATERLOO

LINDE CAULDER V TIGER RYAN

ANTIGUA TIPPERRAY

## ABC SOUTHEND Tel 44580

COMMENCED THURSDAY, DECEMBER 28 FOR SEVEN DAYS  
Doors Open Weekdays 1.30 Sunday 4.0

CAROL WHITE TERENCE STAMP

## POOR COW

Week 2.0 5.25 8.45 Sunday 5.50 8.55 (X)

Robert Cummings Margaret Lee

Five Golden Dragons (A) Sun. 4.30 7.35

No persons under the age of 16, whether or not they are accompanied by an adult, can be admitted for any part of this Programme.

## ODEON BRENTWOOD

Telephone: BRENTWOOD 1223

SUNDAY, DECEMBER 31 FOR SEVEN DAYS  
Doors Open Sunday 4.15 Weekdays 1.15

WALT DISNEY presents

## THE JUNGLE BOOK

Technicolor Sunday 5.05 8.35 Week 1.50 5.20 8.50 (U)

WALT DISNEY presents

## THE ADVENTURES OF BULLWHIP GRIFFIN

RODDY MCDOWALL SUZANNE PLESSETTE

Technicolor Sunday 6.25 Week 3.10 6.40 (U)

## CENTURY PITSEA

open 1.10 JAN. 1 WEEK Vange 2206

GREAT DISNEY HOLIDAY PROGRAMME

## BAMBI

3.10 6.10 9.15

MAURICE CHEVALIER YVETTE MIMIEUX

MONKEYS GO HOME!

1.20 4.25 7.30

BINGO SUNDAY Evening open 6.30

THURSDAY Afternoon open 1.30

THURSDAY Evening open 7.0

HAVE YOU JOINED YET?

## QUEEN'S THEATRE

HORNCHURCH

UNTIL JANUARY 27

## MOTHER GOOSE

A Pantomime written by ALAN VAUGHAN WILLIAMS

Music by MALCOLM SIRCUM and ANTHONY ISAAC

JANUARY 1 to 8 2.30 and 7.30 p.m.

JANUARY 8 to 13 MONDAY to THURSDAY 6.30 p.m.

JANUARY 15 to 20 FRIDAY and SATURDAY 7.30 p.m.

JANUARY 22 to 27 MATINEE THURSDAY & SATURDAY 2.30 p.m.

PRICES 7/6, 6/- and 4/- — Saturday evenings 6d. extra

Thursday Mats., Jan. 18 and 25: All Seats Unreserved 4/6, O.A.P.s 1/-

Box Office Open Daily 10.30 a.m. until 8 p.m. — HORNCHURCH 45333

LICENSED LOUNGE BAR

FREE CAR PARK

## Langdon Hills couple married sixty years

A LANGDON Hills couple, who were married 60 years ago on Christmas Day, celebrated their diamond wedding quietly this week.

They are Mr. and Mrs. Arthur Hull, of the High Road, Langdon Hills.

Mr. Hull has been ill and only a week before Christmas and his diamond wedding, he was in hospital with a stomach complaint.

Arthur (83) and his wife, Charlotte (81), were married in 1907 at the Little Ilford Church, Manor Park. They came to Laindon in 1936 to see a friend who had moved here. They liked it so much that they decided to move to Laindon themselves. When they arrived Charlotte saw immediately an opportunity to start a business of her own.

She opened a lock-up shop in Langdon Hills and began trading as a draper and hairdresser. She later moved her premises to Bolsover Terrace, a few doors along opposite Vowler Road.

She traded with the old Laindoners under the name of "Violetta" and her shop remained open until 1956 when she and her husband retired. Arthur had worked for the

West Ham tramways in the repair shops.

Said Mrs. Hull: "In the old days when everybody knew me as Violetta—that's my daughter's name—Laindon was all mad and hurricane lumps. It is a pity that the place has changed so much."

The Hulls have two daughters, two grandchildren and one great-grandchild.

Said Mrs. Hull: "We had a quiet Christmas because Arthur was not up to a noisy time. But we enjoyed it and our anniversary all the same."

## Drove taxi into cycle

DRIVING a taxi out of a service road into Clayhill Road, Basildon, Brian Reid, of Fryerns Gardens, Wickford, collided with young cyclist Glen Jacobs of Dencourt Crescent, Basildon.

At Billericay on Tuesday week Reid pleaded not guilty to dangerous driving, but was found guilty and fined £25 with £17 16s. 9d. costs, payable at 30s. a week, with an alternative of three months' imprisonment.

P.C. Michael Aspinall said Reid told him: "I had a fare and let her down at the end of the service road. I started off and the lad came straight across the road into me. I tried to stop, but was unable to do so."

In Court Reid said he had "practically stopped" in the service road before moving into Clayhill Road when there was an impact. The boy, he said, stated: "It was not your fault."



Mr. and Mrs. Hull

## Government ask Basildon to cut expenditure

### —To help the Country

ANSWERING A GOVERNMENT PLEA, BASILDON COUNCIL ARE RE-EXAMINING CURRENT AND ANTICIPATED EXPENDITURE WITH A VIEW TO MAKING ECONOMIES TO HELP THE COUNTRY'S SERIOUS ECONOMIC STATE.

The plea arrived just before Christmas in a letter from the Minister of Housing and Local Government to the Chairman of the Council. In it the Minister emphasised the important part which local authorities can play in helping to overcome the present crisis.

He explained that in order to secure a substantial surplus on balance of payments it was vitally necessary to export more and import less involving a switch of resources which would otherwise be available for home consumption.

The Council have accordingly been asked to do all they can to keep down current expenditure and to undertake an immediate review of all proposals for capital expenditure apart from housing and school building programmes.

This will mean the postponement of projects which do not damage the standard of services.

The aim of this review is to restrict growth of local expenditure; to allow a redistribution of resources and to hold any increase in rates to the minimum.

A statement issued by the Leader of the Council, Coun. Anthony Stockley, this week said the Council are conscious of the situation and, as requested by the Minister, are re-examining current expenditure and the proposed expenditure for 1968/69 to see if economies can be made.

## Not the Lawn Bowls Section

THE SECRETARY of Standard Telephones and Cables, Ltd., (Basildon) Bowls Club, has asked us to point out that a defendant who appeared at Billericay Court and whose case was reported in our last issue, was not connected with the Lawn Bowls Section, but the Ten-Pin Bowling Section.

NO PERMISSION The storing of a caravan for touring purposes at Geoff's Lane, Southend Avenue, Wickford, should not need planning permission, the Chairman of Basildon Planning Committee has ruled.

## Foot-and-mouth restrictions upset their Christmas

TURKEY AND PLUM PUDDING TURNED SOUR ON THE BAILEY FAMILY THIS CHRISTMAS BECAUSE THEY WERE FORCED TO SPEND IT APART FROM THEIR RELATIVES.

The Baileys, of Hall Farm, Langdon Hills, were isolated from their relatives because they live in the foot-and-mouth areas of Crewe in Cheshire.

All their Christmas plans were wrecked and they didn't even receive Christmas cards through the post.

The Baileys have had their pig farm in Langdon Hills for three years. This is the first time the family have been apart for Christmas.

Mrs. Jean Bailey told a reporter: "All our plans were ruined because of the foot-and-mouth epidemic. We had Christmas dinner booked at a club and we had to cancel that."

"We did not even receive any Christmas cards because the disease can be carried by mail."

"My husband, Colin, and myself knew it would be like this and we were prepared for it. But when we came to putting up the decorations on Christmas Eve it was very sad."

But hardest hit in the family was little Rebecca,

only four years old and terribly disappointed.

"She has not received any Christmas presents from the family and, at the moment, it looks as if she will not have them until March or April," said Mrs. Bailey.



Here is Rebecca.

## Promote yourself

in your local newspaper. It won't be the first time a captain of industry started in a small way. Advertising can work for you in many directions—creating demand for your products or services, increasing goodwill, announcing new lines or special promotions. The advertisement manager of this special newspaper will be pleased to show you how even a small newspaper will be pleased to show you how even a small advertisement can set you on the way to becoming a leader in your local community. Write to him or give him a ring. It will be 4d. well spent.

Telephone Southend 42261 and ask for the Advertisement Manager, Southend Standard Series, Cliff Town Road, Southend-on-Sea

NATIONAL BLOOD TRANSFUSION SERVICE

## Will you help save a life?

YOU can do this by attending the next Blood Donor session which is being held at—

THE FRYERNS COMMUNITY CENTRE  
WHITMORE WAY, BASILDON

on Monday, January 1st, 1968

between 2.15 p.m. and 4.30 p.m. or 5.15 p.m. and 7 p.m.

OR AT

ST. MARTIN'S CHURCH HALL  
TOWN CENTRE, BASILDON

on Friday, January 5th, 1968

between 2.30 p.m. and 4.30 p.m. or 5.30 p.m. and 7.30 p.m.

(Age limits 18-65 years)

NEW DONORS ARE MORE THAN WELCOME

## Chantry Grill

61 HIGH STREET  
BILLERICAY  
TELEPHONE 4096

NOW OPEN  
FRIDAYS and  
SATURDAYS  
7 p.m. to 11 p.m.

## PUTTING IN A SMALL AD?

OUR OFFICE IN BILLERICAY HIGH STREET IS OPEN EVERY SATURDAY MORNING FROM 9 UNTIL NOON.

TO AVOID DISAPPOINTMENT you are advised to bring or send your "SMALL" ADVERTISEMENTS in as EARLY AS POSSIBLE

BE WARNED! Burglars may visit you soon  
IS YOUR HOUSE PROTECTED? If not, then contact us immediately for Free Estimate and confidential installation  
A.P.C. ALARMS • TELEPHONE: 20849  
BASILDON

## QUEENSLAND COLLEGE

BOARDING AND DAY SCHOOL 100 CROWSTONE ROAD, WESTCLIFF  
Telephone: SOUTHEND 40664  
A LIMITED NUMBER YOUNGLADIES FROM FOUR TO SCHOOL-LEAVING AGE  
Spacious Classrooms, Dormitories, Premises and Grounds — Near sea  
G.C.E. and R.D.S. Exams taken for which excellent results have been achieved  
IN FULL Grammar School curriculum Tennis, Netball and all-the-year-round swimming taken by Qualified Staff. Apply SECRETARY

## EMIGRATING?

Special rates on your Furniture and Effects. Shipping and storage arranged in any part of the world. Casks supplied and steel banding  
FREE ESTIMATES AND ADVICE  
REMOVALS — Telephone: Southend 68008 — STORAGE  
J. KINGSBURY & SON 25 York Rd. Southend

WEDNESDAY, JAN. 3rd  
at 7.45 p.m.

## DINNER and DANCE

with

CABARET  
LES HENNING  
(Comedian)

JILL & TERRY  
(Two in Harmony)

3 gns.

BOOK NOW — VANGE 3204

COMMODORE

Timberlog Lane  
Vange  
BASILDON

# CHILDREN'S PAGE

## GIFTS TO DELIGHT OLD PEOPLE



THANK YOU all so much for your Christmas cards. Some were extremely pretty; some were funny; but they were all welcome!

I had one from Gordon and Susan Weller, in Australia; not surprisingly, it had a lovely picture of a kangaroo, just ready to hop, and a border of Australian flowers.

I also had a most attractive one from the Adams family—Wendy, Aina, Martin and Veronica—that gave me a really good laugh. Thank you very much, children—I showed it to everyone in the office, who thought it was funny, too, and now it is stuck on the wall of my study, with all the others I have received.

And I do mean "stuck," because, when my boys were at home, they had this room for their bedroom, and they covered it from floor to ceiling with "pin-up" girls and pictures of motor bikes and "pop" groups and other things boys like. When they left home and I had a spare room my first thought was—"Ah, my own study at last!"

So I bought a big new desk, and installed it, and collected up all the battle-scarred old bits of furniture that still had life and use, but showed obvious signs of having belonged to a family of growing children with huge feet and a love of ink and paint; and here I can sit and write to all the Happy Pals, and make as much mess as I like.

I've got some lovely "pin-ups" of my own now—all your Christmas, Easter and New Year cards from last year; postcards of my Scottish holiday; pictures from my calendar, and, of course, animal pictures (you must have gathered by now that I'm quite dotty about animals!). Every so often I get another picture of interest from someone—mostly my Happy Pals—and up it goes. You'd be surprised how much inspiration it gives me to see all your cards and pictures round me.

AUNTIE LIZ.

## MANY SCHOOLS THOUGHT OF OLD PEOPLE AT CHRISTMAS AND SOME SUPPORTED IN A VERY GENEROUS MANNER, THE HAPPY PALS' LEAGUE APPEAL.

Other schools made their own distribution of gifts for old, sick and lonely folk and our picture above shows fourth-year students at Laindon Secondary School leaving the school to distribute 50 parcels to local pensioners.

Well done, Laindon Secondary School.

## SECRET MESSAGE

V SJWZ NVHYZ FJT  
ZJWV PI ZIQ VCG  
VFE DVZ ZIQ CJJH VP  
GJVKP IFJ WJKICQ  
PBIF!

AUNTIE LIZ.

## "THANK YOU" FROM MANY GRATEFUL OLD AGE PENSIONERS

WE HAVE A VERY NICE COLLECTION OF LETTERS THIS WEEK, MANY FROM GRATEFUL PENSIONERS WHO RECEIVED ONE OF YOUR WONDERFUL PARCELS, OR FROM THOSE GOOD FOLK WHO HELPED TO DELIVER THEM.

Here are a few extracts from them:—

"... on behalf of elderly folk in Laindon, I would like to express my thanks to all children and kind folk ... and the 'Standard Recorder', who have once again organised this wonderful, kindly task. It is a most rewarding effort which brings a lot of happiness to many more old folk.

"May we also thank all the boys and girls who have carried out so many visits to elderly people throughout the year ... if you know of an elderly pensioner living alone, pop in and say 'Hello'!"—(Mrs. Irene Cann, Secretary, Laindon Old People's Welfare).

On behalf of Wickford Old People's Welfare Committee, I thank you and all your staff for the parcels kindly handed to us last Saturday morning. We have distributed these and can assure you that they gave great pleasure to the recipients.

"Will you please convey our thanks to all members of your Happy Pals League."—(Mrs. B. Askew, Hon. Secretary).

## APPEAL THANKS

Our grateful thanks for a last-minute gift of toys from three Happy Pals from Bault Road, Laindon. They are the Diment children, Thomas 10, William 12 and Gillian 7.

Thank you very much, children; they were lovely toys, and I could have played with the "sketching projector" myself!

AUNTIE LIZ

"... I can only get about with a walking aid and don't go out, but it did cheer me up and helped my purse for Christmas."—(Mrs. C. Chittock, Barnard Close, Vange).

Thank you for the Christmas parcel ... and thanks to the W.R.V.S. ladies who came out on a cold Sunday to deliver."—(Mrs. Lucy Bedingham, Keats Way, Wickford).

I am very grateful for your good work."—(A. McFadden, Long Riding, Basildon).

I must just send a word of thanks for the lovely surprise Christmas parcel I re-

ceived last Sunday. It is worth while living to 85 years to know how kind people are to the old folk. I do send my grateful thanks."—(Miss E. Russell, Outwood Common Road, Billericay).

It was a lovely Christmas thought, and indeed, it is nice to think there are still people who think of the aged living alone."—(C. H. Sussans, Mountnessing Road, Billericay).

We have never heard of the Happy Pals League, but very many thanks for all concerned for their kind thoughts for us two old people for Christmas. Believe me, you have given us great pleasure."—(Mr. and Mrs. J. Burr, Monoux Close, Outwood Common).

My mother, Mrs. L. Warr, thanks you from the bottom of her heart for your kindness ... (Mrs. L. Fletcher, The Knares, Basildon).

It was a most pleasant surprise. What a lot of hard work you must have spent for the Senior Citizens ... (Winnie Barker, Keats Way, Wickford).

Well, as you can all see, our efforts in collecting up groceries and making them into parcels was very well worth while. I hope it makes you as happy as it makes me to hear from all the grateful old folk, and to know that your endeavours are so much appreciated.

AUNTIE LIZ

Happy Pals  
IF YOU WANT TO JOIN THE HAPPY PALS' LEAGUE PLEASE SEND YOUR FULL NAME, ADDRESS AND DATE OF BIRTH TO AUNTIE LIZ, "STANDARD" OFFICE, 10, SOUTHERNHAY, BASILDON.

## BIRTHDAYS

A very happy birthday is wished this week for the following Happy Pals:—

Maxine Burgess, of Bardfield, Vange, are not known, and Jeffrey Howard Bates, of Avondale Road, Vange, five, both on Friday, December 25th; Jacqueline Syrett, of Neville Shaw, Basildon, 10, Deborah Mary Holdsworth, of Cattawade Link, Basildon, six, and Paul William Young, of Chaucer Walk, Wickford, five, all on Saturday, December 30th.

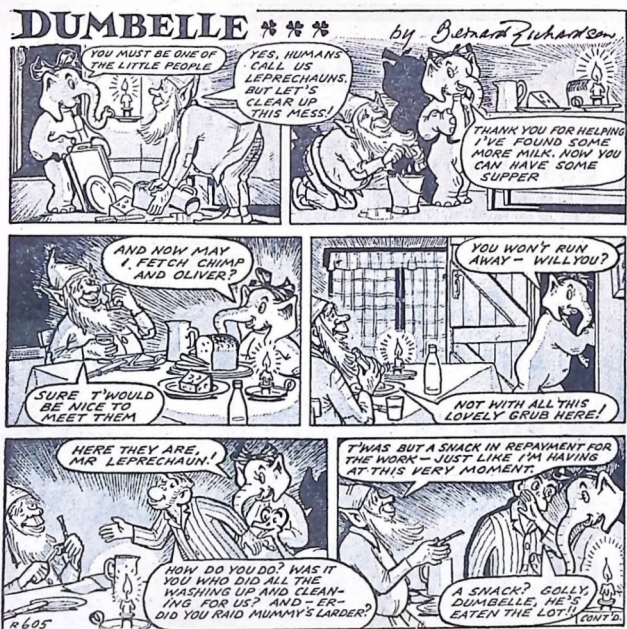
Patricia Ann Morris, of Roselaine, Basildon, 12, Kim Alexandra Brown, of Broadview Road, Church Road, Pitsea, 10; Paul Cridlad, of Constitution Hill, Bonfret, eight; Debra Higgins, of The Vango, Basildon, seven; Ann Elmore, of Valley Road, Billericay, eight; Karen Denise Simpson, of Tilney Turn, Basildon, 12; and Alison Granfield, of St. Clement's Road, Thundersley, two; all on December 31st.

Jill Diane Good, of Fairlop Gardens, Basildon, seven; Edward Mint, of Ethelred Gardens, Wickford, six; Gordon Weller, of Wolseley Road, Morley, Western, Australia, nine; Paul Anthony Haley, of Bardfield, Vange, eight; Suzanne Curtis, of Goldins Crescent, Basildon, nine; and Debra Sylvia Elberry, of Butnays, Basildon, eight; all on January 1st—so of course, Happy Birthday AND Happy New Year to you all.

Lorraine Knight, of Great Knightleys, Basildon, six; Andrew Syrett, of Neville Shaw, Basildon, two; David Silver, of Brendon Way, Southend, 12; and Marion Ambler, of Ambleside Drive, Southend, 14; all on January 2nd; Carol Ann Elson, of Goodook, Basildon, five, on January 3rd; Ann Denise Longman, of Chesterfield Gardens, Basildon, 13; and Carol Newman, of Park Road, Corringham, age not known; both on January 4th.

Many happy returns of the day to you all.

AUNTIE LIZ.



Christine Stanley (Parks Queen) attended the under-11's Play Leadership Christmas party at Fryers Play Area on Friday.

# ROSES

*Value for Money*

# SALE

**COMMENCES . . . . 9. a.m.  
SATURDAY**

**AN OPPORTUNITY TO SAVE £'s !**

## ROSES

fashion centre

**30-36 TOWN SQUARE  
BASILDON**

Also at 21 BROAD WALK, HARLOW

Open until 6.30 p.m. Fridays

# CAR PARK FEES? THEY'LL SPREAD LIKE A CANCER

## —Warn union men

**TWO REPRESENTATIVES of Basildon Trades Council will attend a special meeting of Basildon Council's car parking study group — and they will oppose any plans to make motorists pay for parking.**

At their meeting last week unionists accepted the invitation because "pay-parking spreads like cancer."

The study group are looking at parking in Wickford and Billericay. They are considering charges as a possible answer to some of the problems, but will consider the views of outside bodies.

Vice-Chairman of the Trades Council Mr. T. Jones said he was flatly against any form of car parking fee in Basildon Town Centre.

## Attractive

Car parking facilities in the centre were a big attraction to shoppers from outside districts, who knew they could park their cars near shops.

"This idea has been mooted before, and I am against this kind of thing happening in the New Town. If it happens in Billericay and Wickford, it could well spread here."

Mr. E. Barker supported the Vice-Chairman: "Once they get their

foot in at Billericay and Wickford it will not be too long before they are in the Town Centre. It will spread like a cancer."

Parking produced more news this week when Wickford Chamber of Trade declared war on commuters from Laindon and Basildon who leave their cars in Wickford car parks all day.

"It's getting beyond a joke," the traders' spokesman, Mr. Brian Lovesey, told a reporter. "People who come into the town to do some shopping are having to leave their cars outside the town because the car parks are full."

"The traders are losing custom over it, and the only people getting any benefit from the car parks are people who live outside the area."

## Outsiders

Wickford Station is used by many Laindon and Basildon people be-

cause it is a direct line to Liverpool Street.

"There is a by-law which says that cars cannot be parked for longer than eight hours — and we're going to see if it can be enforced," said Mr. Lovesey.

"I've had many complaints from local shoppers that the car parks are packed — even when there aren't many shoppers about."

The traders have already asked British Rail to provide adequate parking at the station.

"They built a small car park," said Mr. Lovesey, "but the commuters have to pay to use it. They won't do that while there are free ones round the corner."

The traders have also pressed Basildon Council to give them a representation on the study group looking into Wickford parking problems — but so far to no avail.

## Stolen cars

AN AUSTIN A35 car, owned by Mr. Abimbola Ebeneza, of Byfleet, Basildon, was stolen from Pitsea Railway Station on Friday night. On the same night an Austin mini, owned by Mr. Mark Vella, was stolen from Perry Springs, Basildon. Another car, a Ford Cortina, owned by Mr. John Arkwright, of Whitmore Way, Basildon, was stolen from the Jolly Friar car park, Basildon, between December 15th and Friday.

## Sentences halved

ESSEX QUARTER Sessions on Tuesday week halved two concurrent sentences of six months' imprisonment imposed by Billericay Magistrates on 19-year-old Richard Terence Beckett, of Park Drive, Wickford, for assault and bodily harm and driving while disqualified.

The Court dismissed his appeals against concurrent sentences of three months each for taking and driving away a motor vehicle without consent, driving while uninsured, using threatening behaviour in a public place, possessing an offensive weapon and malicious damage.

Mr. Martin Ward, for the respondent, said all the offences occurred on the same night in July when Beckett lost control of himself following a violent quarrel with his wife while they were living at her mother's home.

He did £15 worth of damage to the house, struck his mother-in-law several blows to the body and face, threatened people with a boot-kick and took his brother's car without consent, being then a disqualified and uninsured driver. Beckett, who had been in prison, Beckett appealed for another chance. He said he deeply regretted what he did and added that he did not assault his mother-in-law intentionally.

## M.P.'s QUESTION

Billericay M.P. Mr. Eric Moon, is to ask the President of the Board of Trade if he will take steps to provide ad hoc arrangements to offset the increases in the cost of importing, newsprint, type metal and other materials resulting from devaluation, in view of the further depressing effect the increases will have on the newspaper industry.

## Irishman's predicament

AN IRISHMAN, bailed in £5 from Billericay Court in October on the understanding he returned to his native Eire, came back to England just before Christmas to see a girl friend. Then he could not get back to Eire because of foot-and-mouth travel restrictions.

He was picked up by the Police, and Billericay Court heard this story on Thursday, when he appeared again to be dealt with on the two charges of storebreaking and theft from properties in the town, to which he had previously pleaded guilty and been bailed.

The man, Harold Joseph Dowdall (25), of no fixed address, was again remanded on bail this time of £50 for three weeks, after he gave the undertaking he would return to Eire.

Said the Chairman (Mr. H. S. A. Rother): "If you have not left this country by then you will be brought before us and you will certainly go to prison."

## Drank a yard of beer in 35 seconds

**Carnival Queen arranges novel contest**

IT WAS ALL good, clean fun at the beer-drinking contest which formed part of the attractions at the Gorgeous Guy Gala held on Friday at the Locarno Ballroom, Basildon.

The brawny contestants, all with prodigious thirsts, lined up around the arena, protected by sheets of aluminium. One by one they were swathed in a huge, protective towel and handed the "wallop" — in the traditional "yard-of-ale" glass.

And down it went — either inside or, more often, outside! The towel got progressively wetter with each contestant and had to be reinforced with a mackintosh sheet. The three mini-skirted judges, timing each competitor with a watch, grew more excited as the fun waxed faster and more furious; and the spectators cheered and clapped.

Man with the most spectacular swallow was Mr. John Squires, of Albert Road, Southend, who downed his yard of beer in 35 seconds flat. He won a "mini-plot" of ale, given by the same brewery that sponsored the com-

petition and lent the glass. Later in the evening four judges mingled with the crowd and picked out various guys whom they considered to be particularly gorgeous.

Winner of the handsome silver trophy was Mr. David Buthly, from Dagenham, who received it from Jane, of the Jane and I Boutique, of Westcliff.

The whole evening was arranged by Carnival Queen Geraldine Gahan, who raised £25 for the Basildon Multiple Sclerosis Society by her efforts. Also in attendance were Kerryanne Butterfill and Christine Wais, her two princesses.

Geraldine, who worked extremely hard for at least three months organising and arranging the evening, felt a little sad that the profits were not higher, but she felt greatly encouraged by comments from friends, who pronounced the evening "fabulous."



## Goodbye to a Deputy Head

MRS. ALICE Thompson joined the teaching staff at Wickford Junior School as "a temporary member" — And on Thursday — 19 years later — she said her farewells as Deputy Headmistress to members of the school governors and teaching staff.

At a farewell party at the school Mrs. Thompson (pictured below with Headmaster Mr. R. E. Cole and Mr. Joel Watford) said: "I have been told that I shall be missed. But I am only one person — and there are more of you for me to miss."

Explaining why she stayed at the school so long she quipped: "The trouble is that I've got big feet... and when I get them in a door nobody can get them out." Headmaster Mr. R. E. Cole thanked Mrs. Thompson for the work she has done and presented her with a memento. She was accompanied by her daughter and son.

Mr. Joel Watford, Chairman of the Governors, made a presentation on their behalf.

Mrs. Thompson, aged 55, is leaving to take over as Headmistress of Somers Heath Junior School, at South Ockendon, next year to take charge of about 170 children.

She joined the staff at Wickford in 1948, after coming to England from India, where she was born and taught for 11 years.

Mrs. Thompson, who teaches general subjects with an emphasis on mathematics, will not be moving away from her home in Elizabeth Drive. She has a married son and daughter.

# BLUE CARS

make your money go further

— solve your holiday problems

Blue Cars are famous for low-cost, all-in Continental Holidays. This year they've gone all-out to cut your holiday costs right down! Still the same top-standard hotels, luxury jet flights and streamlined coach travel... but this year you'll find them better bargains than ever. And you'll have more of your precious currency left over for a swinging time in the sun! Choose from: SPAIN 10 days air-coach holiday from 21 gns. AUSTRIA 10 days air-coach holiday from 22 gns. ITALY 10 days air-coach holiday from 23 gns. SWITZERLAND 11 days air-coach holiday from 31 gns. MAJORCA 11 days air-coach holiday from 31 gns. COSTA BRAVA 15 days air-coach holiday from 37 gns. IBIZA 15 days air-coach holiday from 46 gns. MOROCCO 8 days air-coach holiday from 61 gns. GREECE 15 days air-coach holiday from 61 gns. Direct flights from London and Manchester.



Get the  
**FREE**  
BLUE CARD  
CURRENCY  
CALCULATOR

CALL NOW

**WESTWAY TRAVEL LTD**

62 HIGH STREET, WICKFORD

Telephone: Wickford 2539

YOUR APPOINTED BLUE CARS AGENT

Clarksons jet you to summer sunshine at these 'breakthrough' prices!

CLARKSONS SPAIN 11,12,15 DAYS 27	ITALY 11,12,15 DAYS 31*	TUNISIA 15 DAYS 47*
MAJORCA 11,12,15 DAYS 31	YUGOSLAVIA 11,12,15 DAYS 36*	CANARIES 15 DAYS 67
	IBIZA 11,12,15 DAYS 33*	

\*If devaluation changes these prices, the increase will not be more than 5%.

All flights by luxury jet — Comet 4s and B.A.C. 1-11s. Forty-nine jets a week direct from London or Manchester.

Breakthrough prices like Spain from 27 gns., Italy from 31 gns., Tunisia from 47 gns., Majorca from 31 gns., etc., etc. — all fully inclusive with no hidden extras.

It's all in Clarksons free 100-page full colour Holiday Book of the Year containing Clarksons unique Holiday Guarantee.

Get your free brochure and book now through....

**WESTWAY TRAVEL LTD.**

62 HIGH STREET, WICKFORD

Telephone: Wickford 2539

# PLAN YOUR HOLIDAY AT WESTWAY TRAVEL

THERE ARE so many wonderful places to spend your holiday nowadays the choice is sometimes bewildering. However, now — when the weather is cold and gloomy — is the time to collect a bunch of brochures so that you can pore over them at the weekend. Mr. Howell, of Westway Travel, of Wickford, has many suggestions for holidays that are just that bit "different."

## TRUST Global

THE BIG NAME IN AIR HOLIDAYS

Global gives you the greatest holiday value under the sun!

11, 12 and 15-day holidays to the

**COSTA BRAVA** .....from 29 gns.

11, 12 and 15-day holidays to

**PALMA, MAJORCA** from 31 gns.

11, 12 and 15-day holidays to

**ITALIAN ADRIATIC** from 32 gns.

Global give you more jets than ever — handpicked hotels — special family concessions — and permanent, trained Global staff at every resort.

GET YOUR 76-PAGE COLOUR BROCHURE FROM:

**WESTWAY TRAVEL LTD**

62 HIGH STREET, WICKFORD

Telephone: Wickford 3392

## DEVALUATION

While every effort is being made to maintain prices shown in these advertisements, they may be subject to adjustment due to devaluation of the £.

Any changes will be stated at time of negotiating a booking.

## FOLLOW THE SUN

IF YOU want to keep within the sterling area you can still follow the sun, for there are four Mediterranean countries — which welcome tourists — Malta, Cyprus, Gibraltar and Libya.

Yes, Libya is within the sterling area, and is rapidly becoming a tourist attraction. The beaches and climate beat any the South of France can offer, though at present the hotels don't. However, the fact that you can swim off white beaches, palm fringed, will make up for defects in plumbing and electricity supply. The climate is ideal with warm, sunny days and cool nights.

Libya is for spring, autumn and winter holidays for the average temperature in December is around 65°F.

THE Italian Riviera is one of the most popular holiday grounds on the Italian shores of the Mediterranean. Here you will find fine sandy beaches, modern hotels, together with the fun of exploring the old Italian villages, which hang precariously to the rocky coastline. There are a variety of resorts ranging from the larger, famous resorts like San Remo to the smaller, quiet places such as Sportorno.

**Cosmos**  
THE NAME THAT MAKES A GREAT HOLIDAY!  
DEVALUATION. Many prices unchanged! Smallest possible increases on remainder. New prices sent with brochures.

COACH/COACH-AIR HOLIDAYS	
<b>AUSTRIA</b> 10 days 18 gns. SPENDING MONEY £57	<b>PARIS</b> 8 days (bed and breakfast) 15 gns. SPENDING MONEY £59
<b>San Sebastian</b> 10 days 19½ gns. SPENDING MONEY £55	<b>Adriatic Riviera</b> 10, 15 & 16 days 20½ gns. SPENDING MONEY £57
<b>Bay of Naples &amp; Rome</b> 15 days 37½ gns. SPENDING MONEY £47	<b>Lake Wolfgang &amp; Vienna</b> 15 days 39½ gns. SPENDING MONEY £44
<b>Central European Capitals</b> 14 days 47½ gns. SPENDING MONEY £37	<b>Grand Tour of Spain</b> 15 days 48 gns. SPENDING MONEY £44

AIR HOLIDAYS	
<b>Costa Brava</b> 11, 12, & 15 days from 26½ gns. SPENDING MONEY £54	<b>IBIZA</b> 11, 12 & 15 days 33½ gns. SPENDING MONEY £54
<b>Rome &amp; Adriatic Riviera</b> 15 days 39½ gns. SPENDING MONEY £48	<b>Yugoslavian Riviera</b> 15 days 39½ gns. SPENDING MONEY £46
<b>Switzerland</b> 15 days 39½ gns. SPENDING MONEY £41	<b>Portuguese Algarve</b> 15 days 62½ gns. SPENDING MONEY £32
<b>Canary Islands</b> 15 days 65½ gns. SPENDING MONEY £43	<b>GREECE</b> 15 days 72 gns. SPENDING MONEY £32

Your choice of two:  
☐ Full Colour Brochures  
☐ Air Holiday Brochure  
☐ Coach/Coach-Air Brochure

NAME \_\_\_\_\_ ADDRESS \_\_\_\_\_

**WESTWAY TRAVEL LIMITED**

62 HIGH STREET, WICKFORD — Telephone: Wickford 2539

## DEVALUATION

WILL DEVALUATION affect your holiday? Hardly at all say the travel agents. Spain, one of the more popular and certainly one of the cheapest holiday countries has devalued, so will not be affected at all. And even for those wishing to holiday in countries that have not devalued, travel agents are minimising the impact as much as possible, though it would be as well to check prices with your agent before making bookings.

## Go Everyman! from 2 gns a day Spain, Italy

Includes everything — accommodation, food, air travel, coach to hotel.

Off-peak

**bonus!** Five-star gift pack comes with all holidays with departures up to and including May 30th and from 9th September on!

Go Off-peak! Top value!

Every holiday under £49

64 page colour brochure from

**WESTWAY TRAVEL** Limited

62 HIGH STREET, WICKFORD, ESSEX

Telephone: WICKFORD 2539

## TARTAN ARROW CONTINENTAL HOLIDAYS

by AIR and COACH

from 20 gns.

SPAIN • MAJORCA • IBIZA  
ITALY • SWITZERLAND  
AUSTRIA • YUGOSLAVIA

also LUXURY  
MEDITERRANEAN CRUISES  
from 46 gns.

FULL DETAILS AND BROCHURE  
FROM YOUR LOCAL AGENT

**WESTWAY TRAVEL LIMITED**  
62 HIGH STREET, WICKFORD



150,000 SEATS TO SELL!  
YOU TAKE THE HOLIDAY  
**LYONS**  
TAKE THE TROUBLE  
SUPERB VALUE!

AIR HOLIDAYS	FROM	10 DAYS 8 COUNTRIES	26½ GNS.
8 DAYS OSTEND	14 GNS.	12 DAYS SWITZERLAND	28½ GNS.
11 DAYS COSTA BRAVA	27 GNS.	AIR/COACH HOLIDAYS	FROM
11 DAYS ITALY	27 GNS.	3 DAYS BULFIELDS	11 GNS.
11 DAYS TANGIER	40½ GNS.	8 DAYS PARIS	14½ GNS.
11 DAYS CASABLANCA	45 GNS.	11 DAYS NORTH AFRICA	42½ GNS.
15 DAYS AUSTRIA	33½ GNS.	11 DAYS NICE & ITALY	36 GNS.
11 DAYS SWITZERLAND	26½ GNS.	10 DAYS GEMS OF ITALY	33 GNS.
11 DAYS NORWAY	34 GNS.	11 DAYS BAY OF NAPLES	35 GNS.
11 DAYS YUGOSLAVIA	32½ GNS.	13 DAYS CAPRI & ROME	42 GNS.
11 DAYS PORTUGAL	36½ GNS.	13 DAYS GREECE	42½ GNS.
11 DAYS MAJORCA	31 GNS.	15 DAYS MOSCOW	65 GNS.
COACH HOLIDAYS	FROM	11 DAYS ITALIAN LAKES	30½ GNS.
10 DAYS LIDO DI JESOLO	19 GNS.	10 DAYS SWISS LAKES	29 GNS.
10 DAYS RIIMNI	19 GNS.	CAR HOLIDAYS	FROM
10 DAYS AUSTRIA	19 GNS.	12 DAYS AUSTRIA	21 GNS.
10 DAYS SAN SEBASTIAN	21 GNS.		

**WESTWAY TRAVEL**  
LIMITED

62 HIGH STREET, WICKFORD  
TELEPHONE: WICKFORD 2539

## APAL & SEE SPAIN

AIR STAR HOLIDAYS  
SPECIAL FLIGHTS 11, 12 & 15 DAY HOLIDAYS  
(NO INCREASE IN PRICES)

<b>COSTA BRAVA</b> from £33.0.0	<b>COSTA BLANCA</b> from £48.12.0	<b>SITGES</b> from £39.12.0
<b>MAJORCA</b> from £35.8.0	<b>CANARY ISLANDS</b> from £70.0.0	<b>IBIZA &amp; MENORCA</b> from £44.7.0

**COSTA DEL SOL** from £54.11.0

**RAIL STAR HOLIDAYS**  
WITH GUARANTEED COUCHETTES  
**SPAIN** from £28.13.0. **ITALY** from £34.16.0.

**STAR COACH TOURS** from 25gns

Our 84 page, full colour brochure also contains holidays in CYPRUS, GIBRALTAR, MALTA, MOROCCO, TUNISIA, YUGOSLAVIA, plus many different holidays to ITALY and SPAIN.

Complete this coupon and post today for your copy of APAL/SEE SPAIN'S colour brochure.

NAME \_\_\_\_\_ ADDRESS \_\_\_\_\_

**WESTWAY TRAVEL LIMITED**  
62 HIGH STREET, WICKFORD — Phone 2539

Wonderful

**1968 HOLIDAYS**



—travel Co-op this year and enjoy the finest holidays and the best of care on the Continent or in the U.K. Really good service at reasonable prices.

Send today for FREE brochures (or telephone 2539)

—POST THIS COUPON—

**WESTWAY TRAVEL LIMITED**  
62 High Street, Wickford

BLOCK CAPITALS PLEASE

NAME \_\_\_\_\_

ADDRESS \_\_\_\_\_

Tick appropriate space

☐ Holidays Abroad ☐ Britain & Ireland



# Tyrolean Travel



**DIRECT  
Air Service from:  
SOUTHEND  
from £ 38 2 weeks all-in**



Ask your local  
A.B.T.A. Travel Agent  
for free Colour Brochure

Telephone messages recorded by Telex equipment on Billericay 53467  
outside business hours

## Billericay Tile Centre

1 RADFORD WAY, BILLERICAY, ESSEX  
Telephone: Billericay 53467

Also at  
35 VICTORIA ROAD, ROMFORD, ESSEX  
Telephone: Romford G2671

CERAMIC WALL AND FLOOR TILES, MOSAICS  
FIREPLACE MANUFACTURERS  
SANITARY WARE

## FUNERAL SERVICE

PERSONAL AND REVERENT SERVICE  
REST ROOM AVAILABLE  
CREMATIONS — BURIALS — EMBALMING  
MEMORIALS

**F. E. FARRER N.A.F.D.**

33 HIGH STREET — BILLERICAY  
Established 100 years Telephone: BILLERICAY 2944  
GARAGE AND WORKSHOP: WESTERN ROAD

## GLASS

PLATE AND SHEET GLASS MERCHANTS  
Glazing Contractors  
Mirror Manufacturers  
Table Tops and Shelves  
Resilvering and Edgework

**W. OPPERMAN AND SONS LIMITED**  
12 WINSTANLEY WAY, BASILDON OPEN SAT. 8-1

TELEPHONE: BASILDON 3358

## What's this

**Two Bonuses  
on one  
motor insurance  
policy?**

**YES**

It's the **Vehicle & General**  
(In the lead again)  
with their  
**DOUBLE  
BONUS POLICY**

Vehicle & General are now giving a Bonus based  
on your age and occupation as well as the usual  
Bonus based on a good driving record. The result  
is faster terms for everyone and very much lower  
premiums for the experienced driver.

All the previous advantages of insuring with the  
V & G remain, of course. No knock for knock  
agreements to reduce your Bonus—On the  
spot service from more than 1,500 officially ap-  
pointed Insurance Brokers—A fast and efficient  
claim service via special claims offices situated  
in major towns throughout the British Isles...  
...it is easy to see that over 750,000 motorists  
are insured with the Vehicle & General.

**THE**

**VEHICLE & GENERAL  
GROUP**

MEMBERS OF THE  
BRITISH INSURANCE ASSOCIATION  
For further details about the Vehicle & General  
Double Bonus Policy for motorists, contact your  
local officially appointed Insurance Broker.



**R. A. BUTT & CO. LTD.**  
Insurance and Marine Brokers  
3 NETHER PRIORS, BASILDON  
Telephone: Basildon 21651

## DESPAIR? SUICIDE?

WHO CARES?  
THE SAMARITANS  
Ring **BASILDON 22222**  
DAY or NIGHT

## EAST HAM LOAN Co. Ltd.

£10 to £2,000 NO SECURITY  
212a HIGH ST. NTH., EAST HAM, E.6  
(near station) Saturday until 9 p.m.  
Telephone: Grangewood 2622

## CO-OPERATIVE FUNERAL FURNISHING SERVICE

We attend to every detail  
with dignity and sincerity  
FOR IMMEDIATE SERVICE  
131a HATHAWAY ROAD,  
GRAYS

or at any Society Branch  
Telephone: Grays Thorrock 2082  
or 2442 (day and night)

## THE KEY TO SUCCESS...

when Buying or Selling is a "PIO-  
TORIAL—THE WEEKEND SOUTHERND  
STANDARD" Classified Advertisement.  
See your local newspaper or local office,  
Standard House, 10/20 Cliff Town Road,  
Southend-on-Sea.



The picture above was taken at Nevendon Primary School's Christmas party in the school hall.



THE BASILDON MOTHER AND BABY GROUP OF PLAY LEADERSHIP HELD A PARTY IN THEIR HEADQUARTERS IN THE FRYTH LAST WEEK.



THEY HAD A JOLLY GOOD TUCK-IN AT PITSEA JUNIOR SCHOOL'S CHRISTMAS PARTY LAST WEEK, BUT THE YOUNG PIRATE SEEN ON THE RIGHT HAD TO LIFT HIS EYE PATCH TO SEE ALL THE GOOD FOOD ON HIS PLATE.



THE PICTURE BELOW SHOWS THE CHOIR OF KINGSWOOD JUNIOR SCHOOL, BASILDON, WHO TOOK PART IN A CAROL SERVICE HELD IN THE SCHOOL HALL LAST WEEK.



## THEY KEE ENJOY



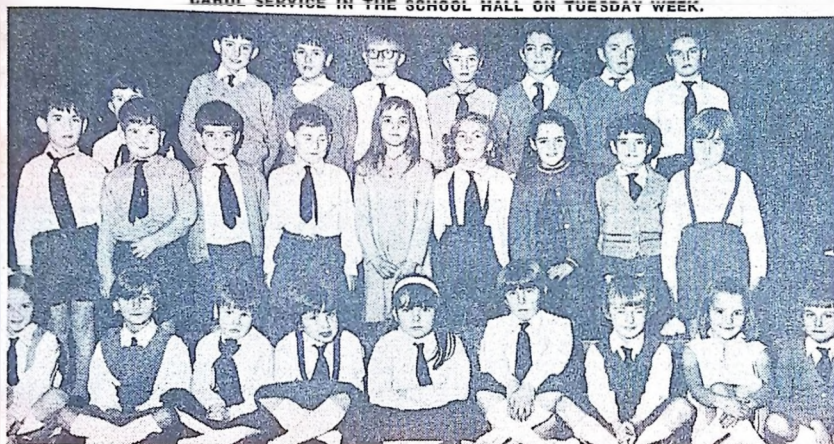
The ladies in these two pictures  
their parties last week. Above their k  
South Keep-Fit Class party, and the co  
members at their Christmas party





THE CHILDREN SEEN ABOVE ARE IN LEE CHAPEL SOUTH KINDERGARTEN, WHO PRODUCED A NATIVITY PLAY IN THE COMMUNITY CENTRE AT LEE CHAPEL SOUTH LAST WEEK.

BELOW ARE CHILDREN OF THE WHITMORE JUNIOR SCHOOL, BASILDON, WHO WERE AT A CAROL SERVICE IN THE SCHOOL HALL ON TUESDAY WEEK.



## FOSTER BROTHERS

# Sale

STARTS SATURDAY DECEMBER 30TH

MEN'S CORD JACKETS	99/6	MEN'S SHIRTS for Casual Wear	19/11
MEN'S GREY TROUSERS	29/6	MEN'S SHIRTS WHITE POPLIN	17/9
MEN'S TROUSERS (Terylene/Worsted)	55/-	MEN'S PYJAMAS	17/9
MEN'S TWEED CAR COATS	£6.6s	Coopers Y Front Underwear (Slightly Imperfect)	5/-

These are just a few of the sensational lines Foster Brothers are offering in their SALE. Don't miss your chance to get full value for your money—hundreds of bargains in every Branch, and everything is reduced.

### BARGAINS IN BOYS' WEAR

SCHOOL GREY SHORTS (Terylene/Sarfilia)	18/6	PYJAMAS (Brookland Cotton)	15/9
CHARCOAL GREY TROUSERS (Terylene/Worsted)	35/9		

'Back to school' at Sale prices including school uniforms—EVERYTHING reduced

**OVERCOATS** All stocks must be cleared—sweeping reductions.

**CARCOATS** All carcoats reduced to clear.

**FOSTER BROTHERS**

Bargains for all—come early for best selections

14 East Walk  
BASILDON

Also at Chelmsford

Branches throughout the country—over 200 in all

## THE FIT TO THEMSELVES



their keep-fit activities to enjoy dress competitors at Lee Chapel Lee Chapel North Keep-Fit Class Hayloft, Basildon.



BILLERICAY TUFTY CLUB HELD THEIR CHRISTMAS PARTY AT THE RECREATION ROOMS, BILLERICAY, ON WEDNESDAY WEEK. OF COURSE, FATHER CHRISTMAS PAID THEM A VISIT.

LEE CHAPEL NORTH CARNIVAL QUEEN JOSIE SULLIVAN PAID A VISIT TO THE CHRISTMAS DANCE HELD BY THE LEE CHAPEL NORTH BALLROOM DANCE CLUB ON FRIDAY. SHE IS SEEN BELOW WITH MEMBERS OF THE COMMITTEE.



## EASTERN CARPET STORES

# sale

NOW ON!

GIANT SIZE CARPET BARGAINS!

Some examples—	SALE PRICE YOU SAVE
15ft x 12ft EVLAN CARPETS	£21.10.0. <del>£34.00</del>
10ft 6in x 12ft HEAVY WILTONS	£27.10.0. <del>£37.00</del>
16ft x 12ft ENKALON CARPETS	£42.00.0. <del>£50.00</del>
12ft x 9ft AXMINSTERS	£19.10.0. <del>£20.00</del>
12ft x 12ft EVLAN TONALS	£17.10.0. <del>£18.00</del>
18ft x 9ft BEDROOM CARPETS	£19.10.0. <del>£20.00</del>
13ft x 12ft A.I. AXMINSTERS	£43.5.0. <del>£49.00</del>
9ft x 7ft 6in DEEP PILE WILTONS	£15.0.0. <del>£16.00</del>
14ft x 12ft QUALITY WILTONS	£37.10.0. <del>£42.00</del>
13ft x 12ft EVLAN CARPETS	£18.2.6. <del>£21.00</del>

**BROADLOOM BARGAINS!**  
AXMINSTERS  
Up to 10ft wide 8 designs  
SALE PRICE SAVE  
**39/8** ~~£40.00~~  
WALL-TO-WALL FITTED FREE!

DISCONTINUED DESIGNS & END OF ROLL REMNANTS up to 50% off!

BROADLOOM BARGAINS! 100% NYLON Up to 12ft wide 10 Colours SALE PRICE SAVE	SALE PRICE YOU SAVE
4ft 6in x 9ft A.I. AXMINSTERS	£6.10.6. <del>£10.00</del>
11ft x 12ft ALL NYLON CARPETS	£31.10.0. <del>£40.00</del>
18ft x 12ft PATTERNED CARPETS	£25.10.6. <del>£30.00</del>
15ft x 12ft A.I. AXMINSTERS	£49.10.0. <del>£50.00</del>
16ft x 12ft LUXURY WILTONS	£42.15.0. <del>£50.00</del>
14ft x 9ft EVLAN TONALS	£15.0.0. <del>£16.00</del>
10ft x 12ft ENKALON CARPETS	£26.15.0. <del>£30.00</del>
12ft x 12ft LUXURY AXMINSTERS	£26.12.0. <del>£30.00</del>
15ft x 12ft Medium quality CARPETS	£21.10.0. <del>£24.00</del>

EASIEST OF EASY TERMS  
**EASTERN CARPET STORES**  
150 BRANCHES THROUGHOUT GREAT BRITAIN

40 EAST WALK  
BASILDON  
Tel 22406







# ★ STANDARD RECORDER MOTOR MARKET ★

ORDER YOUR NEW ROOTES VEHICLE  
FOR JANUARY 1968 DELIVERY

## HALLS THE ROOTES PEOPLE

Tarpots Cnr., London Rd., 8th. Benfleet  
33% Deposit — 27 Months to Pay — Insurance Cover Effected

★ IMMEDIATE DELIVERY FROM THE FOLLOWING  
SUPER IMPS, SINGER CHAMMOIS, CALIFORNIANS,  
MINX, MINX ESTATE, HUNTER, HUNTER ESTATE,  
VOGUE, HUMBER SCEPTRE

Call in for a FREE DEMONSTRATION and book a Demonstration in the  
fabulous NEW SUNBEAM HAPIER.

★ Complete Servicing and Repairs available at these premises or  
to suit your convenience at our other Branch  
★ All Agency Garage — Diesel and Petrol — Open 9 a.m. to 10 p.m.  
SEVEN DAYS A WEEK — OPEN FOR VIEWING ALL DAY SUNDAY

## LONGMANS MOTORS

LAINDON AUTODROME, HIGH ROAD, LAINDON

Dep. Cash	Dep. Cash
Ford Anglia . . . 1965 £120 £385	Hillman Minx . . 1960 £75 £195
Vauxhall Victor . . 1966 £150 £525	Ford Prefect . . . 1960 £55 £135
101 . . . 1966 £150 £525	Ford Prefect . . . 1961 £60 £155
Zephyr 4 Mk. III . 1964 £120 £385	Jaguar Mk. II . . 1958 £20 £50
Wolseley Hornet . . 1966 £150 £525	Consul Mk. II . . 1959 £60 £175
Triumph Herald . . 1966 £140 £465	Ford 100E . . . 1960 £60 £115
Austin 1100 . . . 1965 £120 £425	Ford Popular . . . 1956 £20 £50
Austin Mini . . . 1965 £110 £375	Hillman Automatic 1961 £70 £225
Traveler . . . 1959 £45 £95	Austin-Healey . . 1961 £100 £185
Humber Hawk . . . 1959 £45 £95	3000 . . . 1961 £100 £185
Volkswagen . . . 1961 £85 £250	
Austin A40 . . . 1961 £80 £230	
Farina . . . 1967 £120 £425	
Austin Mini . . . 1955 £35	

G.T. Cortina, 1650 engine,  
balanced twin D.E.C.O.E. 405  
Lotus gearbox, mag. wheels,  
tape recorder, radio, many  
other extras 1967 £275 £500

PART-EXCHANGES WELCOMED Phone: Basildon 43310

OPEN 9 A.M. TO 8 P.M. SEVEN DAYS A WEEK  
IMMEDIATE DEMONSTRATION ALL CARS WITHOUT OBLIGATION

## BASILDON SALVAGE COMPANY LTD.

Archers Fields, Burnt Mills Road, Basildon

Phone:  
Basildon  
20710

NEXT YEAR WE WILL BE THE VERY  
BEST BUYERS OF SCRAP IRON AND  
NON-FERROUS METALS — DON'T  
FORGET — PHONE US FIRST!

SPECIAL OFFER!

900 x 20 and 750 x 20 TYRES —  
EXCELLENT CONDITION — £5 EACH

## VOLKSWAGEN



in  
BASILDON  
and  
District

## MERIT MOTORS

575-581 LONDON ROAD  
HADLEIGH, ESSEX

(on the A13)  
Tel.: Southend  
558491



## BRIGHT and MARSHALL

LONDON RD., HADLEIGH

Always a large selection of NEW and USED CARS

SALES: Southend 559844 WORKS: South Benfleet 3191

M.O.T. TESTING ★ CRYPTON TUNING

— Our price includes Service before delivery change oil and  
After, visual examination of brake linings and Three Months' Guarantee

## SALOON AND ESTATE CARS

	Price	Dep.	Monthly
61 AUSTIN A55 Mk. II Saloon, Farina grey	£285	£100	£10.0
62 AUSTIN 1800 Saloon, Old English white	£345	£190	£17.5
63 ZEPHYR 4 Saloon, radio, ambassador blue	£395	£135	£12.5
64 Mdl. VIVA D.L. disc, Persian blue	£365	£125	£11.9
65 AUSTIN 1100 D.L. Saloon, Connaught green	£395	£100	£10.0
66 Mdl. SUPER MINX 1725 cc. old	£645	£220	£20.14
(late) FORD Popular Saloon, blue	£95	£65	£6.0
67 VICTOR 101 Super Saloon, blue	£495	£165	£15.16
68 SINGER Vogue, duo-blue	£445	£150	£14.7
69 AUSTIN 1100 D.L. Saloon, maroon	£475	£125	£12.13
70 FORD Classic Saloon, turquoise	£295	£100	£9.6
71 MORRIS 1000 Convertible, grey	£315	£70	£6.1
72 MORRIS Oxford Auto, smoke grey	£475	£160	£15.1
73 MORRIS disc brakes, cactus	£495	£165	£15.16
74 HERALD Est. blue	£425	£145	£13.8
75 MORRIS 1000 D.L. traveller, green	£425	£145	£13.8
76 AUSTIN A60 D.L. 1.6 own, grey	£395	£200	£18.0
77 FORD Anglia 1200 cc. aqua blue	£345	£115	£11.0
78 VAUXHALL Viva D.L. Saloon, suede grey	£475	£125	£12.13
79 TRIUMPH Herald Convertible, red	£325	£110	£10.9
80 FORD Anglia D.L. spruce green	£365	£125	£12.13
81 Mdl. HILLMAN Minx Series VI, 1.6 own	£325	£175	£16.15
82 AUSTIN A60 D.L. 1.6 own, disc, beige	£425	£145	£13.8
83 CORTINA 2-dr. D.L. white	£425	£145	£13.8
84 AUSTIN A60 D.L. 1.6 own, Arlanc beige	£425	£145	£13.8
85 SINGER Chamois Mk. II, white	£325	£115	£11.0
86 MINI all-metal Ciman, white	£345	£115	£11.0
87 SINGER Chamois Mk. II, white	£325	£115	£11.0
88 VIVA 5L90, peacock blue, 10,000 miles	£665	£225	£21.1
89 CORTINA 2-dr. 1500 D.L. green	£425	£145	£13.8
90 AUSTIN Mini 5 D.L. green	£295	£100	£9.6
91 FORD Cortina 1500 cc. Est. green	£465	£155	£14.16

## SPORTS CARS

MGB G.T., old, wire wh., r.s. tyres, radio, tuned, black cellulose and wire painting on black leather: 21,172/66; 11,740 miles. with history . . . £995	£335	£32.3
66 M.G. Midget, wire wh., Riviera blue . . .	£565	£190
67 AUSTIN A60 D.L. 1.6 own, B.R.G. . . .	£475	£125
68 SPITFIRE 4, 1 owner, new 5 P.s., white . . .	£445	£150

Hours of Opening: Weekdays 9 a.m. - 7 p.m.; Sundays 10 a.m. - 6 p.m.



TO ALL MOTORISTS  
and may we continue to offer you  
"ALL THE BEST" IN  
USED CARS IN THE COMING  
YEAR

CALL  
IN  
AND  
SEE  
THEM  
TODAY



**SMAC**  
SERVICES LTD.

FORTUNE-OF-WAR ROUNDABOUT  
ARTERIAL ROAD, LAINDON  
Telephone: LAINDON 3324

1967 AUSTIN Mini Countryman with wood, island blue, grey trim; immaculate (L) £525
1966 WOLSELEY 16/60 Saloon, blue/white, fitted heater (L) £375
1963 AUSTIN Sprite, white, black trim, fitted heater, new windscreen and hood (L) £385
1966 FORD Cortina Saloon, light blue, one owner, low mileage; first-class condition (L) £510

1966 MORRIS 1100, green, green interior, one owner, fitted heater and wing mirrors (H) £565
1962 VOLVO Saloon, resprayed red, fitted heater; 0 right car for the right family (H) £475
1960 MORRIS 1000 Van, grey, fitted heater and dashera (H) £145
1965 VAUXHALL Viva D.L. 1.6, grey, low mileage, new clutch, juiced (H) £435
1966 TRIUMPH Herald 12/50 Saloon, green; immaculate condition (H) £445
1966 AUSTIN A60 Saloon, blue, one owner, low mileage (H) £585

## The Hot New Hillman Hunter Mk II



Looks like a £1,000 car  
and performs like a £1,000 car.  
The only difference is £138.  
The New Deal price for the hot new  
Hillman Hunter Mk II is £862\*, tax paid.  
Come along and take a hot test drive.

\*Ex works price inc. p.a. (Stat beta and whitewall tyres extra.)

Part of the new deal from Rootes.

ORDER NOW FOR EARLY DELIVERY

GREAT OAKS  
SERVICE STATION  
TOWN CENTRE

WHITMORE  
SERVICE STATION  
WHITMORE WAY

BASILDON

EXTENSIVE SERVICE AND BODYWORK REPAIR FACILITIES

HOLMES & SMITH  
LTD.  
ROOTES SERVICE

SOUTHEND ROAD  
SERVICE STATION  
SOUTHEND ROAD

WICKFORD PARK  
SERVICE STATION  
NEVENDON ROAD

WICKFORD

VAST ROOTES PARTS STOCKS

## ★ Top-Quality Used Cars ★

1967 MORRIS 1100 Saloon: a really exceptional vehicle in dark green with beige upholstery; nominal mileage only and as new throughout. £425

1966 SINGER Chamois Saloon, coffee brown with beige trim; a well-cared-for attractive example in first-class order mechanically and with unblemished bodywork. £485

1965 AUSTIN 1100 Saloon: another of the top-selling BMC model, in fine order throughout, complete with heater, wing mirrors and finished in a delightful red with beige interior. £475

1963 AUSTIN Mini, white, black roof, red trim (a particularly attractive combination); this Mini is in good mechanical condition with none of the faults occasionally found in a vehicle of this age. £245

1962 HILLMAN Super Minx Coupe, white with red trim; a rare model as production was stopped shortly after its introduction due to cost in construction; very well finished, with an exceptionally well designed Coupe top. £450

1962 SIMCA Elvise Saloon, blue, matching trim; a sound, attractive 115-litre car with a fine performance and many luxury features including reclining seats. £250

1964 HILLMAN Minx De Luxe Saloon, dark green with green upholstery — one of the most popular factors owing to its long-lasting finish and reliable performance. £450

1962 FORD Consul Saloon, maroon with matching upholstery; one of the roomiest 115-litre cars ever produced and in good condition with a good buy; this one can be convincingly purchased. £315

1964 HILLMAN Imp Saloon, lach blue with blue trim; a good example capable of much, offering full four-cylinder comfort, adequate performance and ideal for traffic and town driving due to the exceptional turning circle. £495

1965 SIMCA 1000 GL Saloon, white with red upholstery; the top-selling car in France and throughout Europe; an engine life of 100,000 miles is commonplace with this model, combined with exceptional economy and performance. £445

1964 AUSTIN Mini Super, green with green trim; particularly good condition throughout, both mechanically and bodily. £315

1964 SUNBEAM Rapier, quartz blue blue trim, overdrive, heater, wing mirrors and quality finish, one owner. £525

1964 SUNBEAM Alpine, white with black upholstery, overdrive, heater, hardtop; a very pretty car in good order throughout. £565

1965 SUNBEAM Alpine G.T., very attractive, in dark blue with blue trim, fitted with radio, heater, wing mirrors and wire wheels, one owner. £665

1966 SUNBEAM Rapier, Sports Saloon, metallic blue with overdrive, heater, wing mirrors, fitted engine which offers long life and good performance. £675

1965 VAUXHALL Cresta Saloon, blue with blue leather upholstery; a large, roomy Saloon, very comfortable and convenient; renowned for economy, coupled with effortless performance; one owner. £550

1965 VAUXHALL Viva Saloon, white with red upholstery, fitted with heater, a reliable economical car with many desirable features; one owner. £450

1966 TRIUMPH Herald Saloon, blue with blue upholstery, the economical 1200 model offering full four-cylinder comfort, adequate performance and ideal for traffic and town driving due to the exceptional turning circle. £495

1966 VAUXHALL Viva 5L90 Saloon: the performance model of the well-known and popular Viva range — in white with red upholstery. £525

1966 FORD Cortina Estate Car: maximum room, durability and economy are offered with this exceptional condition Cortina, 18,000 miles, one owner. £635

1964 HILLMAN Super Minx Estate Car, green with green upholstery, complete with heater, screenwash, wing mirrors; a well-finished quality vehicle offering both comfort and roominess. £595

1964 AUTO-UNION DKW F111, white with red trim; a full-size car with unique qualities; ideal if you require something a little unusual. £295

1967 SIMCA 1501 Saloon, metallic grey, black upholstery, 10,000 miles and in very thorough first-class order throughout; one of the most attractive and comfortable 115-litre models on the road today. £915

1966 AUSTIN 1100 Saloon, grey with blue trim; one of the most popular cars produced with exceptional reliability and economical performance; this late example comes fully up to expectations. £550

1965 MORRIS Mini Countryman, blue with blue trim; the all-steel model without wooden fittings; a useful, roomy and economical car in first-class condition. £525

1966 HILLMAN Super Minx Estate Car, green with red trim; a very acceptable combination with heater, screenwash, reclining seats and further refinements. £635

1966 HILLMAN Super Minx Saloon, in green with red trim; a very acceptable combination with heater, screenwash, reclining seats and further refinements. £635

1965 HILLMAN Super Minx Saloon, grey with red trim, fitted with automatic transmission, heater, screenwash, reclining seats. £585

1965 FORD Cortina Saloon, 1500 model, in maroon with grey upholstery; very attractive order throughout; one owner. £495

1966 FIAT 1500 Estate Car, unusual in this country but very well known throughout Europe; this Fiat model offers performance, comfort and exceptional carrying capacity; one owner. £795

## COMMERCIAL VEHICLES

1967 COMMERCIAL 12-seater light bus, blue and white, offered on behalf of a customer who purchased the vehicle new from ourselves but who no longer requires it; it is in very good condition throughout. £625

1966 AUSTIN Mini Van, grey with red trim; a thoroughly exceptional vehicle, impeccably immaculate throughout. £365

1965 BEDFORD Viva Van, grey, unwritten; a useful, roomy and economical vehicle, sound in every respect. £240

1965 MORRIS Mini Van; very good condition; one owner. £225







# ★ STANDARD RECORDER STAFF FINDER ★



## PEMBROKE CARTON AND PRINTING CO. LTD.

Urgent!

Urgent!

# LADIES!

We have a number of interesting vacancies in our quality control and finishing departments

## THESE OFFER

Excellent pay and conditions. Light, clean work. Good canteen facilities. Social and recreation clubs (two!).

## HOURS

FULL-TIME 8 a.m. to 5 p.m.; PART-TIME 9 a.m. to 4 p.m. Also 8 a.m. to 1 p.m. and 2 p.m. to 6 p.m. considered.

## PLEASE CALL AT

PERSONNEL DEPARTMENT  
PEMBROKE CARTON & PRINTING CO. LTD.  
PAYCOCKE ROAD, BASILDON

Urgent!

Urgent!

## MACHINISTS

wanted!

FULL or PART-TIME  
also SCHOOL-LEAVERS  
\* PLEASANT CONDITIONS  
\* GOOD RATES  
\* Transport from WICKFORD

## CHASE TEXTILES

LIMITED  
Bruce Grove, Shotkote  
Telephone: Wickford 2702

## Female OPERATORS

for training in light wood-work assemblies

## Skilled General All-Round WOOD MACHINISTS

for television and radio cabinet work

## Skilled VENEER PRESS

OPERATORS and VENEER GUILLOTINE

## OPERATORS

urgently required

Hours: 8 a.m. to 5 p.m.

Excellent rates of pay, canteen facilities, etc.

APPLY

H. HERRMANN Ltd.

BROOK ROAD

RAYLEIGH

Telephone: Rayleigh 5555



OFFICE STAFF LOOK IN AT  
**BASILDON STAFF BUREAU** 3a Southernhay  
Basildon  
(on corner of Great Oaks and Southernhay)  
TELEPHONE: BASILDON 23381

VACANCIES FOR EXPERIENCED STAFF BOTH  
PERMANENT AND TEMPORARY

URBAN DISTRICT COUNCIL OF BASILDON  
Committee for Education  
**BASILDON EVENING INSTITUTE**  
Wanted Urgently

## Part-Time Teachers

for ENGLISH up to G.C.E. "O" level, Thursday after-  
noons 1.30 to 5.30 p.m.

LIGHT CRAFTS including basket work, leather work and  
other crafts, Monday evenings 7 to 9.15 p.m.

Apply by letter to the PRINCIPAL  
BASILDON EVENING INSTITUTE, PATTISWICK SQUARE  
BASILDON, ESSEX

## LADIES and YOUNG LADIES

required for

Clean light electrical work

Training given in coil winding, soldering and assembly.  
Hours 8 a.m. to 4.50 p.m. (3.50 p.m. Fridays). Good pay.  
Free works coach calls at Basildon, Wickford and Crays Hill.

**DRAKE TRANSFORMERS LIMITED**  
KENNEL LANE, BILLERICAY

URBAN DISTRICT COUNCIL OF BASILDON  
Official Staff Advertisement  
COMMITTEE FOR EDUCATION

## Shorthand / Audio Typists

required at Child Guidance Clinic, Great Oaks, Basildon:  
one 38 hours per week, one 19 hours per week. Salary  
£265 to £780 per annum, according to age, qualifications,  
experience

Applications to TOWN MANAGER (EST.) FODDERWICK,  
BASILDON, returnable January 8, 1968.

## F. H. BASSETT & SONS Ltd.

OVERALL MANUFACTURERS

URGENTLY REQUIRE

## Experienced MACHINISTS SPECIAL MACHINISTS

\* GOOD RATES OF PAY \* CANTEN  
\* PLEASANT WORKING CONDITIONS \* MUSIC WHILE YOU WORK  
TRANSPORT AVAILABLE BASILDON/LONDON AREAS

Apply: F. H. BASSETT AND SONS LIMITED  
21 Bebbington Close, Billericay Industrial Estate Tel. 2268  
(five minutes from Billericay rail and bus station)



## SHELL U.K. LIMITED

invite applications for the position of

## SHORTHAND TYPIST

(PERSONNEL DEPARTMENT)

Applicants should have had previous experience. Salaries which are competitive and progressive will be based on age and experience.

PENSION FUND, SOCIAL CLUB, CANTEN FACILITIES

Please apply in writing to:

The Personnel Superintendent (Ref. ADM/3)

SHELL U.K. LIMITED

Shell Haven Refinery, Nr. Stanford-le-Hope, Essex



EAST WALK • BASILDON

have VACANCIES for

## PROVISION MANAGER

AND

## PROVISION ASSISTANT (Female)

★ 5-DAY WEEK ★

Apply to the MANAGER, EAST WALK, BASILDON

## NEWTOWN TEXTILES SPORTSWEAR LIMITED

14-16 GIBCRACKS, TIMBERLOG LANE, BASILDON

Experienced indoor twin needle

## MACHINISTS

AND

## FLAT MACHINISTS

for dresses, skirts and slacks

- Full-time and part-time
- Also outworkers in Southend, Leigh, Benfleet, Basildon and Billericay
- Must be experienced

We are engaged on home and export fashions and good wages can be earned 50 weeks per year.

TRANSPORT CAN BE PROVIDED

Write or telephone

SOUTHEND 49795 or  
VANGE 2733

## WOMEN & GIRLS

to train as

## WIRING & ASSEMBLY OPERATORS

Applications are invited from women between 18 and 45 years for these vacancies.

Preference given to Experienced operators, but suitable applicants with good eyesight and nimble fingers can be trained in our own training school.

Top rates of pay, with individual bonus.

Excellent conditions. First-class canteen and coffee bar

are in a clean, bright factory.

Forty-hour week, 7.45 a.m. to 4.30 p.m.

Apply in person or by telephone to:

MISS C. BLYTH, STC

Chester Hall Lane, Basildon, Essex

STC

WHY DON'T  
YOU CALL  
AT

BASILDON  
SOUTHEAST  
CITY

## SOUTHEND SECRETARIAL SERVICES

136 London Road

(opposite Nazareth House)

Southend-on-Sea

Telephone 49332

8.45 to 12 noon

## BASILDON SECRETARIAL SERVICES

1a Freedom House

(near main Post Office)

Town Sq., Basildon

Phone: Basildon 21612

Sats, 10 a.m. to 12 noon

Vacancies for  
SECRETARIES  
S/H TYPISTS  
CLK./COPY TYPISTS  
MALE and FEMALE  
CLERKS  
BOOK-KEEPERS  
ACCOUNTING M/C  
OPERATORS  
COMP. OPERATORS  
and JUNIORS

**Eyrill Ford**  
**CARPETS**  
**25% DISCOUNT**  
ON EXTENSIVE RANGE  
Telephone: Vange 2414

[illegible]

**WANTED TO PURCHASE**  
 COMPLETE contents of a furnished house for cash; immediate and fair prices for settlements, everything cleared.  
 5, West-dr., Westcliff 79387C  
**ANDERSON** and shelters wanted  
 10, Southdown 42405 or write 10, Southdown 42405  
 Collect G. Ridler and Sons; 1101  
 Mary's-rd., Plimsdon 28129C  
 GRANGEWOOD 42641 28129C

**HOUSE CLEARANCE**  
 If rubbish cleared from SHED, SHOP,  
 GARDEN — SEVEN-DAY SERVICE

**WICKFORD 4854**

---

**HIGHEST PRICES PAID  
FOR  
SCRAP METAL**

**LEAD — COPPER — BRASS  
UNMETAL — ALUMINIUM  
ZINC — SOLDERS  
BATTERIES  
ELECTRIC WIRE AND CABLE**

---

**H. JEFFRIES**  
**74 MARLBOROUGH ROAD  
ROMFORD**

**MISCELLANEOUS**

Wanted: antiques, bars Victorian  
furnishings, old bureaux, semesters, card  
game tables, etc. Call Billery 51580.  
Billery 51580. 5355-65.  
RM4

**MISCELLANEOUS**

OR hire, concrete mixers, chain  
saws (mymetal) saws etc. Letton  
road, Upton 20433. Any time.

**AATHLEN Kest Bureau, nationwide**  
**landship 1 marriage consultants, 3,**  
**99121 for details write pho**

**RID sanders and all elec tools**  
**all types, Porta-Tool Hire Co Ltd,**  
**Stanford-Le-More 4887, 2089737**

**HIC, 6 pins, hair pieces, 21**  
**agency House Hair Boutique 142**  
**Layfield, Reardon (220818) PM3**  
**LIVING, selling, exchanging, oes**  
**Exchange and Mart for bargains.**

[illegible]



# ★ STANDARD RECORDER PROPERTY GUIDE ★

## Brinstow Eves & Son

ESTABLISHED 1899

43 HIGH STREET, BILLERICAY

TELEPHONE: BILLERICAY 52103

24-HOUR ANSAFONE SERVICE

PLEASE USE OUR CAR PARKING FACILITIES AT REAR OF OFFICE OFF WESTERN ROAD

AUCTIONEERS • ESTATE AGENTS  
SURVEYORS and VALUERSOffice hours 9 a.m. to 6 p.m.  
INCLUDING SATURDAYS

### BILLERICAY, off Mountnessing Road

Detached three- and four-bedroomed HOUSES and CHALETs

All covered by  
N.H.B.C. ten-year  
GuaranteePROPERTIES OPEN  
FOR INSPECTION

Prices from

£6,100

Freehold



- \* WARM AIR HEATING
- \* GARAGE
- \* GROUND-FLOOR CLOAKROOM
- \* COLOURED LUXURY BATHROOM

### BILLERICAY, off Perry Street

SUPERIOR FULLY DETACHED FOUR-BEDROOMED HOUSE



- \* PLOT 36FT. x 130FT.
- \* TWO SEPARATE RECEPTION ROOMS
- \* ARCHITECT DESIGNED

- \* FULL GAS HEATING
- \* ATTACHED GARAGE
- \* CLOAKROOM

£7,995 FREEHOLD

### MYLN MEADOW, STOCK

Superior development of Detached

### FOUR-BEDROOMED HOUSES

each with double garage

- \* Full gas-fired central heating
- \* Fitted kitchen
- \* Coloured bathroom suite
- \* Ground-floor cloakroom
- \* Woodblock flooring
- \* Choice of three designs

TEN-YEAR N.H.B.C. GUARANTEE



From £9,950 Freehold

### GREAT BURSTEAD, BILLERICAY

Four only — Spacious new four-bedroomed Semi-Detached CHALET-STYLE properties now in course of erection

- \* FULL GAS CENTRAL HEATING
- \* INTEGRAL GARAGE
- \* 190FT. PLOTS

£6,750 Freehold



£10,950 DOWNHAM. — A delightful modern detached FARMHOUSE having grounds of approximately one-and-a-half acres. Gas-fired central heating. Three reception rooms, farmhouse-style kitchen, five large bedrooms, bathroom, garage, stables. Mature and well-stocked gardens. Plot approximately 39ft. x 150ft.

£9,950 BILLERICAY. — A most impressive 1959-built detached CHALET-STYLE HOUSE with spacious and thoughtfully planned accommodation. Gas-fired central heating. Plot approximately 43ft. x 290ft. Through lounge, dining room, kitchen, three bedrooms, bathroom. Sweeping drive to detached garage.

£8,500 BILLERICAY. — An immaculate and spacious 1966-built detached HOUSE situated only few minutes' walk from High Street. Full gas-fired central heating, woodblock floors. Cloakroom, decorative lounge, spacious kitchen, three double bedrooms, bathroom with coloured suite. Own drive to attached garage. Good size rear garden.

£7,995 BILLERICAY. — A contemporary style split-level architect designed detached HOUSE built in 1964 off Messrs. Merrell-Ikeworth close to High Street. Warm air central heating. Plot 55ft. x 175ft. Cloakroom, superb lounge, dining room, conservatory, kitchen, three bedrooms, bathroom with coloured suite. Detached garage. Delightful garden.

£7,950 BASILDON. — A superb 1960-built detached HOUSE with warm air central heating. Two bedrooms, four bedrooms, dining room, kitchen. Detached garage with own drive. Backs on to open fields.

£7,500 BILLERICAY. — Two only remaining detached four-bedroomed CHALETs within few minutes' walk from town centre. Full gas-fired central heating. Cloakroom, L-shaped lounge/diner, kitchen, four bedrooms, bathroom with coloured suite. Own drive to detached garage.

£7,500 RAMSDEN HEATH. — An excellent 1964 detached HOUSE in extremely pleasant village position. Full gas-fired central heating. Lounge/diner, three bedrooms, bathroom (coloured suite). Own drive to detached garage. Laundry room to rear. Plot approximately 39ft. x 150ft.

£7,250 BILLERICAY. — Four only new detached HOUSES in pleasant position. Warm air central heating. Cloakroom, lounge, study, kitchen, four bedrooms, bathroom with coloured suite. Own drive to integral garage with laundry area to rear.

£6,800 WICKFORD. — One only remaining architect designed detached CHALET built in 1964. Full gas-fired central heating. Warm air central heating. Three bedrooms, coloured bathroom, spacious lounge, luxury kitchen. Overlooking countryside. Inspection recommended.

£6,495 BILLERICAY. — A spacious 1966-built detached HOUSE within few minutes' walk from High Street. Full gas-fired central heating. Lounge, large kitchen, dining room, three bedrooms, bathroom with coloured suite. Attached garage. Good size garden.

£6,475 BILLERICAY. — A 1962-built HOUSE detached in convenient cul-de-sac. Polished woodblock floors. Lounge, well-equipped kitchen, cloakroom, three bedrooms, bathroom with coloured suite. Attached double-length garage.

£6,350 BILLERICAY. — A detached CHALET-STYLE HOUSE in sought-after position, extremely well maintained. Part central heating. Plot 29ft. x 155ft. Cloakroom, dining room, kitchen, three bedrooms, bathroom with coloured suite. Own drive to detached garage.

£6,150 WICKFORD. — One only available new detached HOUSE available for early occupation. Lounge/diner, kitchen, three bedrooms, bathroom (coloured suite), separate w.c. Own drive to integral garage. Plot approximately 200ft. deep.

£5,950 BILLERICAY (convenient High Street and station). — 1964 Semi-Detached HOUSE. Central heating. Three bedrooms, coloured bathroom, spacious lounge, luxury kitchen. Overlooking countryside. Inspection recommended.

£5,750 BILLERICAY. — A superior modern detached LUXURY CHALET in first-class condition throughout. Warm air central heating. Delightful lounge, extremely well fitted kitchen, three bedrooms, bathroom with coloured suite. Own drive to integral garage. Plot approximately 150ft. deep.

£5,500 BILLERICAY. — A 1955-built three-bedroomed detached BUNGALOW with central heating. Detached garage. Lounge, bathroom, separate w.c., kitchen. Delightful gardens.

£5,350 BILLERICAY. — A 1962-built HOUSE detached in convenient cul-de-sac. Polished woodblock floors. Lounge, well-equipped kitchen, cloakroom, three bedrooms, bathroom with coloured suite. Attached double-length garage.

£5,095 BILLERICAY. — A detached BUNGALOW with central heating. Lounge, kitchen, three bedrooms, bathroom, separate w.c. Detached garage. Mature gardens.

£5,500 BILLERICAY. — A 1953 detached HOUSE. Plot approximately 42ft. x 25ft. Joining Green Belt countryside. Three bedrooms, bathroom, lounge, large kitchen. Garage. Inspection recommended.

£5,495 BILLERICAY. — An extremely attractive new Georgian-style HOUSE situated in extremely convenient and charming wooded site. Each House will have the benefit of gas-fired central heating, cloakroom (Semi-Detached only), lounge, kitchen, three bedrooms, bathroom (coloured suite). Garage. Own drive to attached garage.

£5,395 BILLERICAY. — A 1956-built Semi-Detached BUNGALOW very close to High Street. Immaculate decorative condition. Lounge, spacious kitchen, three bedrooms, bathroom, separate w.c. Own drive to attached garage. Charming gardens.

£5,325 (from HARRODS COURT, BILLERICAY). — A semi-detached development with attractive Semi-Detached detached and Terraced HOUSES currently in the course of construction. Full gas-fired central heating. Cloakroom, three or four bedrooms, fitted kitchen, three or four bedrooms, bathroom (coloured suite). Own drive to garage. Woodblock floors.

£5,095 BILLERICAY. — A detached BUNGALOW with central heating. Lounge, kitchen, three bedrooms, bathroom, separate w.c. Detached garage. Mature gardens.

£5,095 BILLERICAY. — A detached BUNGALOW with central heating. Lounge, kitchen, three bedrooms, bathroom, separate w.c. Detached garage. Mature gardens.

£5,500 BILLERICAY. — A 1953 detached HOUSE. Plot approximately 42ft. x 25ft. Joining Green Belt countryside. Three bedrooms, bathroom, lounge, large kitchen. Garage. Inspection recommended.

£5,495 BILLERICAY. — An extremely attractive new Georgian-style HOUSE situated in extremely convenient and charming wooded site. Each House will have the benefit of gas-fired central heating, cloakroom (Semi-Detached only), lounge, kitchen, three bedrooms, bathroom (coloured suite). Garage. Own drive to attached garage.

£5,395 BILLERICAY. — A 1956-built Semi-Detached BUNGALOW very close to High Street. Immaculate decorative condition. Lounge, spacious kitchen, three bedrooms, bathroom, separate w.c. Own drive to attached garage. Charming gardens.

£5,325 (from HARRODS COURT, BILLERICAY). — A semi-detached development with attractive Semi-Detached detached and Terraced HOUSES currently in the course of construction. Full gas-fired central heating. Cloakroom, three or four bedrooms, fitted kitchen, three or four bedrooms, bathroom (coloured suite). Own drive to garage. Woodblock floors.

£5,095 BILLERICAY. — A detached BUNGALOW with central heating. Lounge, kitchen, three bedrooms, bathroom, separate w.c. Detached garage. Mature gardens.

£5,095 BILLERICAY. — A detached BUNGALOW with central heating. Lounge, kitchen, three bedrooms, bathroom, separate w.c. Detached garage. Mature gardens.

£5,300 WICKFORD. — One only available new detached HOUSE currently in the course of construction. Warm air central heating. Three bedrooms, bathroom, lounge, large kitchen. Garage. Inspection recommended.

£4,995 to £7,150. RAY. — Superior new development of Semi-Detached and Detached HOUSES with three or four bedrooms, cloakroom, lounge, fitted kitchen, two bedrooms, bathroom. Own drive to integral garage. Plot approximately 25ft. x 150ft.

£4,995 to £7,150. RAY. — Superior new development of Semi-Detached and Detached HOUSES with three or four bedrooms, cloakroom, lounge, fitted kitchen, two bedrooms, bathroom. Own drive to integral garage. Plot approximately 25ft. x 150ft.

£4,895 BILLERICAY. — A 1952-built Semi-Detached BUNGALOW in imposing corner plot. Delightful through lounge, kitchen, three bedrooms, bathroom, separate w.c. Own access to ample garage space. 42ft. frontage.

£4,850 BILLERICAY. — A pleasant 1958-built detached BUNGALOW in charming and convenient residential position. Lounge, kitchen approximately 12ft. x 11ft., two bedrooms, bathroom, separate w.c. Detached garage.

£4,650 BILLERICAY. — A BUNGALOW. Semi-Detached in most convenient position within few minutes' walk from town centre. Lounge, kitchen, two bedrooms, bathroom, separate w.c. Detached garage. Mature gardens.

£4,450 BILLERICAY. — A 1958-built detached BUNGALOW with central heating. Lounge, kitchen, two bedrooms, bathroom, separate w.c. Detached garage. Mature gardens.

£4,325 WICKFORD. — An excellent 1958-built detached BUNGALOW with central heating. Lounge, kitchen, two bedrooms, bathroom, separate w.c. Detached garage. Mature gardens.

OFFICES AT: BRENTWOOD, CHELMSFORD, COLCHESTER, GOODMAYES, HORNCHURCH, ILFORD, SHENFIELD &amp; IPSWICH

### APARTMENTS, FURN. OR UNFURN. TO LET

TO Let, young lady only, share double bed-sitter, all convs. After 5.30. Box 481, Standard Recorder, 10, Southway, Basildon. RM4

### BUSINESSES, SHOPS AND BUSINESS PREMISES

WANTED business for retired couple. Established would do. prompt settlement. Write Mrs. Langford, c/o 65, Cecil Court, Victoria-st., Southend. A2

SMALL fully-equipped licensed betting office for rent. Best offer over £500 secured. Write 14648, Standard House, Southend. A1

### PROPERTY FOR SALE, EXCHANGE OR WANTED

1957-built semi-det. house: 3 bedrooms, 2 recep. rooms, bathroom and kitchen, det. garage. Southend. Billericay (53278). RM4

Try a classified advertisement—it pays

### CHAPEL and CHAPEL

288 HIGH ROAD, BENFLEET

Day and Night Telephone: SOUTH BENFLEET 2801/2

£4,000 freehold. — Ever-popular Wiggins-built BUNGALOW. Two bedrooms, two reception rooms, kitchen, bathroom w.c. Full gas-fired central heating. Easy reach all amenities. BENFLEET. Reduced to £4,400 freehold for quick sale. 1960 detached L-shaped BUNGALOW. Just off A13, BENFLEET. Two bedrooms, 20ft. lounge/diner, large kitchen, conservatory, half-fitted bathroom w.c. Detached garage.

£4,700 freehold. — Semi-Detached CHALET, built to high specification, 1965. Full central heating and garage. Three bedrooms, large attractive lounge, 15ft. kitchen, bathroom w.c. Close Tarpot shopping centre. Easy reach BENFLEET area station. Inspection recommended.

£5,495 freehold. — 1963 Dutch-style Detached HOUSE, full gas-fired central heating. Enjoying approximately 40ft. frontage, made road, just off main A13, BENFLEET. Three double bedrooms, parquet flooring, lounge, kitchen/diner, bathroom, separate w.c. Carport. Many extras included.

### HOLIDAY ACCOMMODATION BEACH HUTS, ETC.

PRESTAY (N. Wales). — New self-catering holiday flats, accom. 4-6; kitchen (h and c), shower; sep. toilet; enclaving full facilities; well-known Prestay Holiday Camp. From £10 per week; free colour folder. Manager: Prestay Holiday Camp, Porthcawl, Glamorgan. A3

PRESTAY (Wales). — New self-catering holiday flats, accom. 4-6; kitchen (h and c), shower; sep. toilet; enclaving full facilities; well-known Prestay Holiday Camp. From £10 per week; free colour folder. Manager: Prestay Holiday Camp, Porthcawl, Glamorgan. A3

### CASH LOANS

£5 to £30 without security

Strictly confidential

Write BLANDFORD STREET FINANCE CO.

7 GENOTIN ROAD ENFIELD, MIDDLESEX or telephone 01-363 3664

### BANK LOANS

TO HOUSEOWNERS BY WAY OF

### SECOND MORTGAGES

Net interest 5%—9 years or less to repay

OUR REPRESENTATIVE WILL BE PLEASED TO CALL AT YOUR CONVENIENCE

DAVID NASH & COMPANY 6 HOLLY TREE GARDENS, RAYLEIGH

24-HOUR TELEPHONE SERVICE RAYLEIGH 2842

STILL AT 5% NET INTEREST

Write or Phone: HORNCHURCH 44640

ARDLEIGH ESTATES 104 NORTH STREET, HORNCHURCH

### SHORT OF CASH?

Then take advantage of our

### 2nd MORTGAGE

BANK LOANS

OVERDRAFTS FOR

NEW CAR

CONTINENTAL HOLIDAY ETC., ETC.

In fact, any purpose! 5-10 YEARS TO REPAY

Tax Relief on Interest

Guillan Ltd. 7-18 Weston Chambers (London Post Office) Weston Road, Southend Telephone 31291/2/3

Try a classified advertisement—it pays

## BILKERIDAY 53186

## Surveyors, Land and Property Agents

BASILDON 231597 231600

**£6,975**  
**BILLERICAY**

Magnificent architect-designed luxury Detached Bungalow, with full central heating. Three spacious bedrooms, coloured bathroom, separate shower cubicle, separate w.c., imposing lounge 23ft. x 13ft. (woodblock flooring), fully-fitted kitchen 10ft. 6in. x 9ft. Approximately 125ft. plot. Separate garage and carport. At present in course of erection, having the benefit of the N.H.B.C. ten-year guarantee.

**\$5,275 WICKFORD.** — An exceptionally attractive 1961 - built Semi - Detached House, in convenient residential position. Three double bedrooms, downstairs bathroom, separate w.c., delightful lounge 18ft. x 12ft., fully-fitted kitchen 14ft. x 7ft., full gas-fired central heating (radiators). Own drive-in to 29ft. carport. Approximately 150ft. plot. Recommended.

For properties in  
BILLERICAY • WICKFORD • RAYLEIGH  
BRENTWOOD • SHENFIELD

**£5,295** **BILLERICAY.**—An exceptionally attractive, highly thought-of 1991-built Semi-detached House, enjoying gas fired central heating. Three large bedrooms, principal bathroom 10ft. x 11ft., half-tiled bathroom, lounge 10ft. x 11ft. (woodstrip flooring), fitted kitchen 14ft 3in. x 8ft. 3in. Own drive to detached garage 10ft. x 9ft.

Special applicant still looking for suitable Property. — **BILLERICAY** applicant seeks House of character in good size garden. Small House on large plot ideal. Up to £8,000, £9,000.

**SURVEYORS VALUERS AUCTIONEERS ESTATE AGENTS COMMERCIAL CONSULTANTS**

All with landscaped front gardens,  
services and ten-year N.H.B.R.C. guarantee.

wardrobes, 11ft. 6in. x 10ft. and 9ft. 7in. x 9ft. 2in. Full center-hung door  
 tion. **\$6,195** freehold.

**75 HIGH STREET, WICKFORD - Telephone 3376**

Please tick boxes of interest for prompt reply

**11 LONDON ROAD, WICKFORD, ESSEX**  
Telephone: WICKFORD 3760

Telephone: WICKFORD 3760

137 HIGH STREET  
BILLERICAY  
BILLERICAY 53166

# **PHELPS & BUTT**

Surveyors, Land and Property Agents

5 NETHER PRIORS  
BASILDON  
BASILDON 23168 / 23150

**£5,925**

## **BILLERICAY**

At present in course of construction off Norseview Drive. Semi-Detached Chalets, built to an excellent specification and including three large bedrooms, coloured stairs cloakroom, downstairs lounge 20ft. x 31ft., fitted kitchen 12ft. x 8ft. 6in. Gas-fired central heating. Integral garage and turfed front garden. Full N.H.B.R.C. ten-year guarantee.

**£7,500**

## **LAINDON**

Nearing completion. — A magnificent fully detached Chalet, enjoying full gas-fired central heating and woodblock flooring. Four large bedrooms, coloured stairs cloakroom, downstairs lounge 21ft. 7in. x 10ft. 11in., fitted kitchen 10ft. x 8ft. 6in. (also allowed for kitchen unit). Garage, 160ft. plot. Early inspection strongly advised.

## **NEW PROPERTIES**

**£6,800**

## **BILLERICAY**

Being constructed in sought-after position of Western Road. — A fully detached three-bedroomed Chalet, with coloured bathroom suite, downstairs cloakroom, lounge 18ft. x 12ft., kitchen 12ft. x 8ft. 7in. (double drainer sink unit). Integral garage, 120ft. plot. Early inspection advised.

FROM  
**£6,000**

## **BILLERICAY**

Preliminary announcement. Ready early 1968. Shortly to be erected to N.H.B.R.C. standards. — Semi-Detached four-bedroomed Chalets, with two reception rooms, luxury specification. Convenient setting.

**£5,595**

## **BILLERICAY**

Completion due early 1968 for these superior Semi-Detached Houses, being erected to a very high standard of specification and including three double bedrooms, coloured bathroom suite, delightful l-shaped lounge 18ft. 8in. x 17ft., downstairs cloakroom/w.c., fully-fitted kitchen 11ft. 6in. x 7ft. 11in. Own drive to integral garage. Approximately 60ft. rear garden. Selective gas-fired central heating. Choice of decorations. N.H.B.R.C. ten-year guarantee. Freehold.

**£6,975**

## **BILLERICAY**

Magnificent architect-designed luxury Detached Bungalow, with full central heating. Three spacious bedrooms, coloured bathroom, separate shower cubicle, separate w.c., imposing lounge 20ft. x 13ft. (woodblock flooring), fully-fitted kitchen 10ft. 6in. x 8ft. 6in. (approximately 125ft. plot). Separate garage and carport. At present in course of erection, having the benefit of the N.H.B.R.C. ten-year guarantee.

**£4,350**

## **BENFLEET.**

An ultra-modern 1964-built Town House, in immaculate decorative condition, having gas-fired central heating, three good size bedrooms, part-tiled bathroom, lounge 17ft. 6in. x 8ft., delightful kitchen 13ft. x 8ft. 5in. (fully fitted). Brick detached garage. Early inspection advised.

**£4,850**

## **BILLERICAY.**

An exceptionally spacious 1958-built Semi-Detached Bungalow, enjoying three good size bedrooms, separate w.c., fitted kitchen 10ft. 6in. x 8ft., full central heating. Early inspection advised.

**£4,495**

## **WICKFORD.**

Most conveniently positioned Semi-Detached Bungalow, enjoying 45ft. frontage. Two good size bedrooms, half-tiled bathroom, lounge 13ft. x 11ft., kitchen 9ft. 6in. x 8ft., conservatory. Thermoplastic tiled flooring throughout. Early inspection advised.

**£4,950**

## **BILLERICAY.**

At Great Burstead. — A really attractive 1958 Semi-Detached House, having the advantage of full central heating and a good plot size. Three good size bedrooms, part-tiled bathroom, separate w.c., delightful lounge 22ft. x 13ft. 3in., fitted kitchen 9ft. 6in. x 8ft. 6in. Detached garage. Laid gardens. Early inspection advised.

**£4,550**

## **BENFLEET.**

1963-built Semi-Detached House, enjoying three large bedrooms, half-tiled bathroom, lounge 16ft. x 13ft., fully-fitted kitchen / diner 19ft. x 10ft. (fully fitted). Brick garage. Long rear garden. Early inspection advised.

**£4,995**

## **GREAT BUR.**

Impressive 1957-built Semi-Detached House, three bedrooms, 28ft. lounge, two drive, garage. Immaculate decorative condition, central heating. Well-maintained gardens. Quick sale.

**£4,650**

## **WICKFORD.**

An attractive 1957-built Semi-Detached Chalet/Bungalow, in a quiet and convenient position. Enjoying three double bedrooms, downstairs bathroom, bright lounge 16ft. 6in. x 11ft. (Claygate fireplace). Fitted kitchen 11ft. x 9ft. Unoverlooked rear garden.

**£4,995**

## **WICKFORD.**

1963-built Semi-Detached House, enjoying central heating and park-like gardens. Two large bedrooms, bathroom, luxury kitchen / diner 19ft. 6in. x 11ft., bright lounge. Detached garage. Early inspection advised.

**£4,850**

## **BENFLEET.**

A conveniently situated fully detached Bungalow, on a good size plot, having the benefit of three double bedrooms, lounge 13ft. x 12ft., fitted kitchen 11ft. 6in. x 8ft. 6in., well-built fully-glazed conservatory 14ft. 6in. x 8ft., half-tiled bathroom. Own drive to ample garage space. Recommended.

**£4,995**

## **KINGSWOOD.**

One of the highly sought-after 1962 Semi-Detached Houses on this delightful estate. Three bedrooms, coloured bathroom suite, separate w.c., bright lounge 21ft. 6in. x 11ft. 3in. Fitted kitchen 11ft. x 8ft. 3in. (stainless steel worktop). Excellent decorative condition, part central heating. Detached brick garage. Well-kept rear garden. Recommended.

**£4,850**

## **BENFLEET.**

A 1964 fully detached House, having the benefit of gas central heating. Three good size bedrooms, half-tiled bathroom, separate w.c., magnificent lounge 25ft. 7in. x 11ft. 6in. (with fitted cocktail bar). Kitchen 11ft. 7in. x 8ft. (breakfast bar). Good size garden.

**£5,250**

## **BILLERICAY.**

Attractive 1950 Semi-Detached House, three bedrooms, spacious bathroom, downstairs cloakroom/w.c., fitted kitchen 10ft. 6in. x 8ft. 6in., kitchen 10ft. 6in. x 8ft. Attached brick garage. Exceptional rear garden 80ft. x 80ft. x 120ft.

**£4,850**

## **BILLERICAY.**

Having the benefit of a large corner plot. An attractive 1958-built Semi-Detached House, three large bedrooms, half-tiled bathroom, separate w.c., magnificent lounge 20ft. x 10ft. 6in., fitted kitchen 14ft. x 7ft. 6in. Own drive to garage 20ft. x 10ft. Recommended.

**£5,250**

## **BILLERICAY.**

Older-style House sought by applicants from East London, with own sold. Three bedrooms, own bathroom, own garden. Ramsden area. Must find suitable Property quickly. Up to £8,000.

**£4,850**

## **BILLERICAY.**

Young couple seeking first purchase in Billericay area. Two bedrooms ample. Must find suitable Property by Easter. Up to £4,600.

**£5,250**

## **BILLERICAY.**

Basildon couple seeking immediate relocation in Billericay/Wickford area. Three bedrooms ample. Must have garage/plot. £6,000/£5,500.

## **ESTABLISHED PROPERTIES**

**£5,250** BILLERICAY. — A conveniently situated 1961-built contemporary Semi-Detached House, in immaculate decorative condition, enjoying full gas central heating and a good plot size. Three good size bedrooms, part-tiled bathroom, separate w.c., delightful lounge 22ft. x 13ft. 3in., fitted kitchen 9ft. 6in. x 8ft. 6in. Detached garage. Highly recommended.

**£5,275** WICKFORD. — An exceptionally attractive 1961-built Semi-Detached House, in convenient residential position. Three double bedrooms, downstairs bathroom, separate w.c., delightful lounge 18ft. x 12ft., fully-fitted kitchen 14ft. x 7ft., full gas-fired central heating (radiators). Own drive-in to 20ft. carport. Approximately 150ft. plot. Recommended.

We have pleasure in announcing the  
**OPENING of our NEW OFFICE**  
at  
**137 HIGH STREET**  
**BILLERICAY**

Telephone: BILLERICAY 53166

**on JANUARY 1, 1968**

For properties in

**BILLERICAY • WICKFORD • RAYLEIGH**  
**BRENTWOOD • SHENFIELD**

**£5,250** LONDON. — An attractive 1965-built Semi-Detached House, in immaculate decorative condition. Full central heating. Within short walk of main line station. Three large bedrooms, half-tiled bathroom, delightful lounge 18ft. x 12ft. 6in. (with woodblock flooring), fitted kitchen 14ft. 3in. x 8ft. 3in. Downstairs cloakroom/w.c. and detached garage. Recommended.

**£5,295** BILLERICAY. — An exceptionally attractive, highly thought-of 1961-built Semi-Detached House, enjoying gas-fired central heating. Three large bedrooms, principal bedroom 10ft. x 11ft., half-tiled bathroom, lounge 19ft. x 11ft. (woodstrip flooring), fitted kitchen 14ft. 3in. x 8ft. 3in. Own drive to detached garage 10ft. x 9ft.

## **PROPERTY WANTED**

Wanted. — With own sold, special applicant seeks two/three-bedroomed Bungalow in BILLERICAY, convenient for law centre. Cash available up to £5,500.

Special applicant still looking for suitable Property. — BILLERICAY applicant seeks House of character in good size garden. Small House on large plot ideal. Up to £8,000/£6,000.

Wanted. — Genuine inquiry for Detached House of character in good district of BILLERICAY. Essential requirements: one bedroom, downstairs. At present living in digs. £8,000/£10,000.

Wanted. — Applicant from Basildon seeks Bungalow/House, three bedrooms, Town Farm Estate or similar. Merrell Road in BILLERICAY. £5,000/£6,000 available.

Now making intensive search. — Ramford applicant seeks Bungalow in area between GERRARD STREET and STOCK ROAD. Two bedrooms ample. Garage / space. Post-war preferred. Willing to make immediate inspection. £4,000/£5,000.

Now making intensive search. — Ramford applicant seeks Bungalow in area between GERRARD STREET and STOCK ROAD. Two bedrooms ample. Garage / space. Post-war preferred. Willing to make immediate inspection. £4,000/£5,000.

## **JAMES ABBOTT & PARTNERS** **DENNIS SMITH** SURVEYORS VALUERS AUCTIONEERS ESTATE AGENTS COMMERCIAL CONSULTANTS

### **NEW PROPERTIES by LINK HOMES**

On SHOTGATE PARK and VIKING ESTATES, three and four-bedroomed units, fully heating, California, Yorkstone fireplaces and hardwood panelling, pink and grey bathrooms.

- \* CHELSEA HOUSES, three bedrooms, from - - - £5,025
- \* BEDFORD Detached House, three bedrooms - - - £5,000
- \* WINDSOR Detached HOUSES, three bedrooms, double garage - - - £5,850
- \* CONWAY HOUSES, four bedrooms - - - £5,750
- \* WARWICK CHALETS, four bedrooms - - - £6,100
- \* LINCOLN Detached CHALETS, four bedrooms £6,500

All with landscaped front gardens, made roads, all mains services and ten-year N.H.B.R.C. guarantee.



CONTEMPORARY ARCHITECT DESIGNED NEW DETACHED HOUSE

One only left of small development of four. Open-plan lounge and dining area, divided by Yorkstone fireplace with polished hardwood open staircase. Superbly-fitted kitchen, bathroom and w.c., downstairs 18ft. 3in. x 11ft., plus two double wardrobes, 11ft. 6in. x 10ft. and 9ft. 7in. x 9ft. 2in. Full central heating by radiators from gas-fired boiler. Garage. Early occupation. £4,195 freehold.

**75 HIGH STREET, WICKFORD - Telephone 3376**

## **NEW DEVELOPMENTS**

- £5,900. WOODHAM FERRERS. — Detached House. Sella fuel central heating, three bedrooms. Integral garage. £7,450.
- £6,150. HOCKLEY. — New Detached three-bedroomed CHALETS, with garages. Full gas-fired central heating, coloured walls, stairs and schools.
- £6,350. RETTENDON. — Detached three-bedroomed CHALET. Full c/t, first central heating, large plot.
- WOODHAM FERRERS. — Three-bedroomed Semi-Detached CHALET, solid fuel central heating. Garage £4,950.

## **ESTABLISHED PROPERTIES**

- HOCKLEY. — Detached three-bedroomed BUNGALOW, central heating, garage, plus extension giving self-contained flatlet. £7,450.
- HOCKLEY. — Three-bedroomed Semi-Detached CHALET, garage and driveway, plus charges paid £4,450.
- CANEWOOD. — Detached pre-war BUNGALOW, plot 34ft. x 40ft. x 160ft. Three bedrooms. Garage space. £4,600.
- HOCKLEY. — Semi-Detached BUNGALOW built seven years. Plot 28ft. x 150ft. Three bedrooms. Garage space. £4,600.
- WICKFORD. £4,450. — Detached older type BUNGALOW, plot 40ft. x 160ft. Made road.
- RAYLEIGH. — Three-bedroomed Semi-Detached HOUSE. Large plot. £5,150 o.n.o.
- RAYLEIGH. — A Three-bedroomed Detached HOUSE, with heat-ins. Garage. £5,750.
- WICKFORD. — Detached PROPERTIES, Link development. Highcliffe Estate. Three and four bedrooms. £5,700.

Please tick boxes of interest for prompt reply

NAME \_\_\_\_\_  
ADDRESS \_\_\_\_\_  
**RURAL ESTATE AGENCY**  
**11 LONDON ROAD, WICKFORD, ESSEX**  
Telephone: WICKFORD 3760

**5 NETHER PRIORS  
BASILDON**

**BASILDON 23158 / 23150**

**£6.975**

## BILLERICAY

**Magnificent architect-designed luxury Detached Bungalow, with full central heating. Three spacious bedrooms, coloured bathroom, separate shower cubicle, separate w.c., imposing lounge 23ft. x 13ft. (woodblock flooring), fully-fitted kitchen 10ft. 6in. x 9ft. Approximately 125ft. plot. Separate garage and carport. At present in course of erection, having the benefit of the N.H.B.C. ten-year guarantee.**

**£6,175 KINGSWOOD.** — An imposing 1961-built fully Detached House. Three large bedrooms, bathroom, separate w.c., bright lounge 18ft. x 12ft. 6in., dining room 10ft. x 8ft., fitted kitchen 12ft. x 8ft. Own drive to detached garage. Space for second garage. Really attractive park-like gardens, with five-tier fish pond and waterfall. A joy to inspect.

**£6,500 BILLERICAY / STOCK. — A**  
 beautifully-maintained 1965 Detached House, backing on to Green Belt countryside. Three large bedrooms, coloured bathroom suite and shower, downstairs cloakroom/w.c., lounge 26ft. x 17ft. reducing to 10ft., half-tiled kitchen 12ft. x 8ft., full central heating, sea-

**£6,800 BILLERICAY.**—A really attractive 1950-built fully Detached Bungalow, on a 200ft. plot, in convenient position. Full

gas central heating, wood-block flooring. Three large bedrooms, delightful lounge 18ft. x 11ft., kitchen 12ft. x 12ft., coloured bathroom suite. Detached garage. Recommended.

**£7,100** BILLERICAY. — An imposing Sem! - Detached

House, on one-quarter acre plot. Full central heating four good size bedrooms separate w.c., downstairs bathroom/w.c., lounge 25ft. x 11ft. 6in. (woodblock floor) half-tiled kitchen 11ft. x 11ft., conservatory. Detached garage 18ft. x 9ft. Early inspection advised.

**£7,400** **KINGSWOOD**  
Basildon. — One  
of the highly sought-after  
Wates - Dormy Detached  
Chalets, having four double  
bedrooms, two bathrooms,  
well-appointed lounge 19ft x  
9in. x 12ft. (folding doors to  
dining room 12ft. x 9ft.), fully  
fitted kitchen (numerous

cupboards, fitted refrigerator) central heating. Detached brick garage. Well - laid gardens.

---

**Wanted. —** Applicant from Basildon seeks Bungalow/House, three bedrooms. Town Farm Estate or similar Morrell development in BILLERICAY. £5,000/£6,000 available.

---

Romford applicant seeks Bungalow in area bounded by PERRY STREET and STOCK ROAD. Two bedroom ample. Garage / space. Post-war preferred. Willing to make immediate inspection. £4,000/£5,000.

For properties in  
BILLERICAY • WICKFORD • RAYLEIGH  
BRENTWOOD • SHENFIELD

**\$5,250 LAGDON HILLS.** Most attractive 1965-built Semi-attached House, in immaculate decorative condition. Full basement. Large front porch. Walk of main line station. Three large bedrooms, half-bathroom, delightful living room, fireplace, tile (blackblock flooring), fitted chest 10ft x 7ft 3in., downers, cloakroom w/c, detached garage. Recommended.


## PROPERTY WANTED

Special applicant still looking suitable Property. — **BILLERICA** applicant seeks House of 3 or 4 in good size garden. Small plot ideal. Up to £15,000.

---

## TRAINING PARTNERS

**H & PARTNERS**  
E AGENTS COMMERCIAL CONSULTANTS



THE BEACHES HOUSE

ing area, divided by Yorkstone fireplace with polished hardwood  
stairs w.c., three bedrooms 18ft. 3in. x 11ft., plus two double  
by radiators from gas-fired boiler. Garage. Early occupa-

— Telephone 3376

## NEW DEVELOPMENTS

- ☐ \$3,900. **WOODHAM FERRERS**. - Detached HOUSE. Full oil-fired central heating, three bedrooms, integral garage.
- ☐ \$3,150. **HOVE**. - New Detached house - bedroom CHALETs with garages. Full gas-fired central heating, color suites. Near station, shops and schools.
- ☐ £9,950. **RETENDON**. - Detached three-bedroomed CHALET. Full oil-fired central heating, large plot.
- ☐ **WOODHAM FERRERS**. - Three-bedroomed Semi-Detached CHALET, solid fuel, central heating, garage. £4,950.

## ESTABLISHED PROPERTIES

- ☐ HOCKLEY — Detached three-bedrooms BUNGALOW, close heating, garage, plus extension giving self-contained flat.
- ☐ HOCKLEY — Three-bedroomed Semi-Detached CHALET, garden, front Road.
- ☐ CANEWOOD — Detached pre-war BUNGALOW, eight 14ft x 10ft and two reception rooms, two bedrooms. Garage 9ft x 6ft. £3,750 o.n.o.
- ☐ HOCKLEY — Semi-Detached BUNGALOW built seven years ago, built 15ft x 15ft, four bedrooms, kitchen, living room, dining room, WC, £4,450. — Detached older type BUNGALOW, built 15ft x 16ft, four bedrooms, kitchen, living room, dining room, Garden.
- ☐ RAYLEIGH — Three-bedrooms Semi-Detached HOUSE, L.S.O. plot, £5,150 o.n.o.
- ☐ RAYLEIGH — A Three-bedroomed Detached HOUSE, with large garden, plot, £5,750.
- ☐ WICKFORD — Detached PROPERTIES, Link development, Highgate Farm Estate, Kent, 18 miles from London.
- Please tick boxes of interest for prompt reply

NAME .....

**RURAL ESTATE AGENCY**

**11 LONDON ROAD, WICKFORD, ESS**

Telephone: WICKFORD 3760

## NEW PROPERTIES by LINK HOMES

On **SHOTGATE PARK** and **VIKING ESTATES**, three and four-bedroomed units, fully fitted with **GASVAINA** space heating, Californian kitchens, Yorkstone fireplaces and hardwood panelling, pink and grey bathrooms.

- |   |                |
|---|----------------|
| <b>CHESEA HOUSES, three bedrooms, from -</b>                        | <b>\$5,025</b> |
| <b>BEDFORD Detached HOUSE, three bedrooms</b>                       | <b>\$5,500</b> |
| <b>WINDSOR Detached HOUSES, three bedrooms, double garage - - -</b> | <b>\$5,650</b> |
| <b>CONWAY HOUSES, four bedrooms - - - -</b>                         | <b>\$5,750</b> |
| <b>WARWICK CHALETs, four bedrooms - - - -</b>                       | <b>\$6,100</b> |
| <b>LINCOLN Detached CHALETs, four bedrooms</b>                      | <b>\$6,500</b> |

all with landscaped front gardens, made roads, all mains services and 10-year N.H.B.R.C. guarantee.

**CONTEMPORARY ARCHITECT DESIGNED NEW DETACHED HOUSE**

One only left of small development of four. Open-plan lounge and dining area, fitted kitchen, bathroom and two bedrooms, two downstairs w.c.s, three bedrooms 10ft. 3in. x 11ft., plus two double open staircases. Full central heating by radiators from gas-fired boiler. Garage. Early occupation. £6,195 freehold.

75 HIGH STREET, WICKFORD - Telephone 3376

**75 HIGH STREET, WICKFORD - Telephone 3376**

## Standard Recorder Offices

THE "STANDARD RECORDER" series of newspapers incorporates the "Basildon, Billericay and Wickford Standard" and the "Basildon, Billericay and Wickford Recorders."

Our offices are at 10 Southernhay, Basildon (telephone Basildon 22651), and 72 High Street, Billericay (telephone 53261/2).

Our local advertisement manager may be contacted at our Basildon office.

Printed and Published by John H. Burrows and Sons Ltd., at Standard House, 19-20 Cliff Town Road, Southend-on-Sea, Essex

## COUNCIL CHAIRMAN VISITS POLICE



The Chairman of Basildon Council (Coun. A. Baron Burn, J.P.) visited Billericay Police on Saturday. In the picture are Insp. G. Manning, D.C. J. Kenneally and Mrs. and Coun. Burn.

## SHOPKEEPERS MET A FRANTIC LAST MINUTE RUSH OF BUYERS

THE CHRISTMAS bonanza in Billericay High Street climaxed to "one mad rush" in the last week of yuletide, many traders reported this week.

Mr. J. S. Alcock, manager of Woolworths, said business was well up on last year, and that seven extra staff were called in to handle the large number of shoppers.

"It seemed to be the trend this year for everybody to leave their shopping until the last

few days," he said, "and then there was a frantic rush."

The wine and spirit trade had a bumper year—due probably to the fact that the breathalysers law made it safer to drink at home.

Manager of Unwins, Ltd. Mr. W. G. Key commented, "We had an exceptionally good Christmas. Wines, spirits and beers were selling very well during the last week."

Even the ironmongers had a busy week. Laylards, who also deal in glassware and cigarettes, etc., had a "very satisfactory" trade. Manager Mr. C. McLaren said, "It started very slowly—but it built up to one mad rush."

Greengrocers, on the whole, had an unsatisfactory Christmas, and most managers agreed that it was probably because fruit had become so expensive.

Mr. John Bell, of John's greengrocers, of Endford Way, declared, "I was very disappointed. I opened last January and this was my first Christmas here. The fruit prices were very high—oranges cost 9d. compared with 7d. last year. Nuts, costing about the same as last year, sold quite well."

## Only one Christmas Day baby at St. Andrew's



CHRISTMAS DAY WAS NEARLY EIGHT HOURS OLD WHEN THE FIRST CRIES OF A BABY ECHOED THROUGH THE MATERNITY WARD AT ST. ANDREW'S HOSPITAL, BILLERICAY, HERALDING A NEW-BORN BOY, THE ONLY CHILD TO BE BORN IN HOSPITAL THAT DAY.

THE MOTHER—SEEN ON THE LEFT WITH HER BABY SON—WAS MRS. MARGARET WASSON, OF MYNCHENS, BASILDON.

THE BABY WAS BORN AT 7.45 A.M. AND LATER IN THE DAY A PROUD FATHER VISITED MOTHER AND SON.

THE BABY WEIGHED 6LB. 6OZ. AT BIRTH.

THE CUSTOMARY SILVER SPOON, A GIFT FROM THE LEAGUE OF FRIENDS, WAS PRESENTED TO THE BABY BY MATRON MISS Q. M. JACKSON.

## BASILDON MASTER PLAN DECISION

(See Page 2)

## The Orient will not be coming to Basildon

opportunity of establishing a worth-while club.

"What we want is unity," he said, "because the town has the talent if every section would work together."

Just before Christmas Mr. Morris met the Corporation to discuss the provision of a ground for the senior club.

George Bushnell, brains behind the Basildon United club recently adopted as the Sports Council's official senior side.

George has said all the way along that Orient would not come and he has been proved right.

"I reckon we will get much more support in the town if we build up our own club. Of course, it will take a long time to get top status, but we should not let this worry us."

George also believes the decision will help bring a senior soccer ground more quickly.

DISAPPOINTMENT hit Basildon's soccer ranks on Wednesday when Orient Football Club stated they are not coming to the New Town after all, writes PETER LUCAS.

Reason for the change of plans is the recruitment of two new directors, who have promised to plough much-needed cash into the club, reported to be losing £800 a week at present.

One of the benefactors has not yet been named, but the other is Knightsbridge casino-restaurant owner Wolf Bannash, who has been a regular attendee at recent matches.

Club Chairman Arthur Page said on Wednesday: "The directors have decided our roots are in the East End and this is where we must stop."

So ends all hope of Orient moving to Basildon, hope which started in November when club officials first met the Development Corporation to discuss a ground. Later, the Minister of Sport, Mr. Denis Howell, was brought into the discussion.

There was general disappointment in Basildon this week over the no-move decision. But most people believe that it could hasten the development of a senior amateur soccer ground in the town.

Basildon League Secretary Joe Hearn was one disappointed man. "I thought it would be great if Orient came," he said, "but now we are left with going it alone, forming our own team and climbing up the ladder in stages."

"Orient were offered a ground in the town and I should hope this same ground will be made available for the local senior club."

Football Section Chairman George Morris said the Orient decision gives footballers of the town a much better

## GLAPHAM BROS

for FURNISHING and CARPETING



Relax in the lap of luxury — Minty

Stockists of

G-Plan

Guy Rogers

Ercol

Greaves and Thomas

Stag

Uniflex

McIntosh

Meredew

Scandart

Avalon

Parker-Knoll

Clintique

Limelight

Toothill

Meyer's

Lebus

White and

Newton

Slumberland

Staples

Fyne-Ladye

Vono

Austinsulte

Jentique

Priony

Nathan

Dunlopillo

Stonehill

Wrighton

Vi-Spring

Stevens

Remploy

Cornwell

Norton

Lawrence

Eurashell

Strongbow

Europa

etc., etc.

Showrooms—

140-142 HIGH STREET

PHONE BILLERICAY 51820

27-29 THE BROADWAY

PHONE WICKFORD 4380

2-6 KINGS ROAD

PHONE BRENTWOOD 1820

Open Fridays until 8 p.m.

9 HIGH STREET

PHONE BRENTWOOD 1820

Open Fridays until 8 p.m.

## A "Royal" draw



Carnival Queen Gloria Shayler and Princess Elaine Lincoln drew the prizes for the Billericay Junior and Infants' School Parent-Teacher Swimming Pool Association Christmas draw at the Red Lion, Billericay. They are seen with members of the Committee.

**Sybil Lord**  
CARPETS  
**25% OFF**

WHILE STOCKS LAST  
SELECTED RANGES

**HURRY**

PLANNERS AVAILABLE  
S.A.M. TO 9 P.M.

Get in touch  
NOW!!

374 London Road, Westcliff  
(nr. Hamlet Ct.) Southend 42124

172 High Street, Rayleigh  
(near G.P.O.) Rayleigh 6456

315 London Road, Hadleigh  
(near Boty) Southend 556081

WE HAVE MADE OUR NEW YEAR RESOLUTION  
"TO GIVE BETTER-THAN-EVER SERVICE  
AT KEENER-THAN-EVER PRICES"

**WICKFORD STUDIOS**  
9 THE BROADWAY, WICKFORD

Telephone: WICKFORD 3836

WICKFORD'S MOST POPULAR PHOTOGRAPHERS

## Standard Recorder Offices

THE "STANDARD RECORDER" series of newspapers incorporates the "Basildon, Billericay and Wickford Standard" and the "Basildon, Billericay and Wickford Recorders."

Our offices are at 18 Southendway, Basildon (telephone Basildon 22651), and 72 High Street, Billericay (telephone 53261/2).

Our local advertisement manager may be contacted at our Basildon office.

Printed and Published by John H. Burrows and Sons Ltd., at Standard House, 19-20 Cliff Town Road, Southend-on-Sea, Essex



The Chairman of Basildon Council (Coun. A. Baron Burn, J.P.) visited Wickford Ambulance Station on Friday. D. Westall and E. Downham show him some of their latest equipment.

## A housewife's year of protest

HOUSEWIFE get-the-footpaths-safer campaigner Mrs. Eleanor Muckett of Wick Beech Avenue, Wickford, this week had a final word to say in 1967 to end her 12 months of protests about the town's pavements.

She referred to a Basildon Council spokesman saying that, apart from the pavement outside Adcock's newsagents' shop, the Council did not appear to have had other complaints about footpaths in The Broadway.

"How ridiculous can we get," said Mrs. Muckett. "I made a detailed survey to the inch covering the whole of the High Street, Market Street and Southend Road to Wick Beech Avenue. I sent a copy to the Council. I

surveyed the scene with Mr. Crisp, the Highways Superintendent and was assured that these paths would be put right in two months' time."

She pointed out that people had been badly injured by accidents on the pavements in the town and said, "May I remind the public that should they fall and injure themselves on bad pavements in the area mentioned in the survey they can claim, provided they report their accident to the Police."

## MINISTER WAS HAPPY

WICKFORD Baptist Church Sunday School combined with the family service on Sunday. The church was full and various children gave Bible readings.

The Christmas Morning service was also well attended and, said Minister Rev. Malcolm Soames: "I felt quite happy with the weekend."

## Pensioners who dined well



THESE OLD FOLK — MEMBERS OF WICKFORD No. 2 O.A.P. BRANCH — HELD THEIR CHRISTMAS DINNER AT WICKFORD COMMUNITY CENTRE AND OBVIOUSLY HAD A VERY GOOD TIME.

## Victim from Wickford

### Man held on murder charge

A 34-YEARS-OLD Belgian, charged with murdering an ex-Wickford woman, allegedly told Police: "I hit her—I held her neck and hit her two times. I didn't realise I killed her."

The man, Willy Billau, was remanded in custody by Southend Magistrates on Friday until Thursday accused of murdering 68-years-old Mrs. Bertha Cates in the Springfield Drive, Westcliff, house where she lived. Mrs. Cates lived for several years in Friern Gardens, Wickford.

When he appeared before the Magistrates again on Thursday Billau was remanded in custody until next Thursday.

The house at Westcliff was occupied by Mr. Joseph Herinckx, his wife and Mrs. Cates (her sister) and Billau, who lived together as a family, the Court heard.

Det.-Supt. John Graves (Head of Southend C.I.D.), applying for the remand, said the couple were out for about ten minutes and, on returning, they saw Billau standing outside the front door.

### In kitchen

He allegedly said: "Don't come in. Fetch the Police."

The couple went into the house and saw Mrs. Cates lying in the kitchen, her face covered in blood.

Supt. Graves said Prof. Francis Camps conducted a post mortem, finding

external and internal injuries to the body.

Charged with murder and cautioned, Billau allegedly said:

"I didn't realise I killed her. I didn't realise she was dead."

## THE LIGHTS PLEASED

HOW WERE Wickford's Christmas Street illuminations received?

Very well, according to members of the public. It was nice to see them and they made shopping seem far easier," said one woman.

Commented Mr. Brian Ruff, President of the town's Chamber of Trade, who were responsible for the lights, "I was very pleased to see them there and I am sure we were very pleased to provide them."

"I hope we shall be able to do the same next year."

### DRIVERS WARNED

Warning letters are to be sent to nine people who contravened Basildon Council parking restrictions at the Market Road, Wickford, car park.

### YOUNG PEOPLE'S PARTY

Wickford Parish Young People's Fellowship held their Christmas party at St. Andrew's Hall on Monday.

## RECORD ATTENDANCES AT THE CHURCHES

CROWDED CHURCHES for services over the Christmas period were reported from the Billericay and Wickford area.

Said Rector of Wickford Rev. Frederick France: "As far as I'm concerned this Christmas was a very responsive one. At the midnight service at St. Catherine's we had the largest congregation we have ever had, and a record number of communicants."

Parish Priest of Wickford Father John Gallagher reported that at midnight mass the Roman Catholic Church was packed, and people had to stand in the porch.

At Billericay there were 457 people at midnight mass in the Roman Catholic Church. A total of 550

people attended Christmas Day services.

Rev. Geoffrey Holley, Rector of Great Burstead, told the "Standard": "The midnight service was absolutely crowded and some of the congregation had to stand. There were not so many people as usual at the morning family service."

## Buying homes

Chelmsford Rural District Council are considering a proposal to buy privately-owned empty houses and let them to some of the 1,400 people on their waiting list.

## CLAPHAM BROS

### for FURNISHING and CARPETING



Relax in the lap of luxury — Minty

### Showrooms—

140-142 HIGH STREET  
PHONE BILLERICAY 61820

27-29 THE BROADWAY  
PHONE WICKFORD 4380

2-6 KINGS ROAD  
PHONE BRENTWOOD 1820  
Open Fridays until 8 p.m.

9 HIGH STREET  
PHONE BRENTWOOD 1820  
Open Fridays until 8 p.m.

Stockists of  
G-Plan  
Guy Rogers  
Ercol  
Greaves and Thomas  
Stag  
Uniflex  
McIntosh  
Meredew  
Scandart  
Avalon  
Parker-Knoll  
Cintique  
Limelight  
Toothill  
Myer's  
Lebus  
White and Newton  
Stamberland  
Staples  
Fyne-Ladye  
Vono  
Austinsulte  
Jentique  
Priory  
Nathan  
Dunlopillo  
Stonehill  
Wrighton  
Vi-Spring  
Stevens  
Remploy  
Cornwell  
Norton  
Lawrence  
Lurashell  
Strongbow  
Europa  
etc., etc.

**Superior**  
CARPETS  
**25% OFF**

WHILE STOCKS LAST  
SELECTED RANGES

**HURRY**

PLANNERS AVAILABLE  
9 A.M. TO 9 P.M.

Get in touch  
NOW !!

374 London Road, Westcliff  
(nr. Hamlet Cl.) Southend 42124

172 High Street, Rayleigh  
(near G.P.O.) Rayleigh 6456

315 London Road, Hadleigh  
(near Bx12) Southend 556001



WICKFORD TABLE TENNIS CLUB HELD A CHRISTMAS DANCE AT THE COMMUNITY CENTRE ON SATURDAY. AMONG THE GUESTS WERE CARNIVAL QUEEN ANN CAMP AND HER TWO PRINCESSES, SONIA MARTIN AND LESLEY INCE.

WE HAVE MADE OUR NEW YEAR RESOLUTION  
"TO GIVE BETTER-THAN-EVER SERVICE  
AT KEENER-THAN-EVER PRICES"

**WICKFORD STUDIOS**  
9 THE BROADWAY, WICKFORD

Telephone: WICKFORD 3836

WICKFORD'S MOST POPULAR PHOTOGRAPHERS

## Standard Recorder Offices

THE "STANDARD RECORDER" series of newspapers incorporates the "Basildon, Billericay and Wickford Standard" and the "Basildon, Billericay and Wickford Recorders."

Our offices are at 10 Southernhay, Basildon (telephone Basildon 22851), and 72 High Street, Billericay (telephone 53261/2).

Our local advertisement manager may be contacted at our Basildon office.

Printed and Published by John H. Burrows and Sons Ltd., at Standard House, 15-20 Cliff Town Road, Southend-on-Sea, Essex.

## A WONDERFUL CRUISE



Fifteen-years-old Stephen Bamfield, of Kathleen Ferrier Crescent, Laindon, who, as reported in our last issue, has been accepted for a two-weeks' cruise on the Sir Winston Churchill training ship, is seen above with the Headmaster of Laindon Secondary School, Mr. A. H. J. Chadband.

## People went mad buying bread

**BASILDON WENT** bread mad this Christmas. Bakers reported massive buying and supplies exhausted by midday on Saturday.

Bartons, with chains of shops throughout the area, were hit by "excessive demand."

"Shops did run out at various times during the day," admitted General Manager of Bartons Mr. D. T. Wheeler. "We expected a tremendous demand, but even that was exceeded."

"People just went mad," reported Mrs. L. Greaves, manageress of a baker's shop in Whitmore Way, Basildon. "I am positive people buy far more than they need. They went berserk, some of them were buying 18 loaves at a time."

From Laindon, Mrs. Henrietta Holmes, of Victoria Road, wrote in to the "Standard Recorder" to complain that shops there had run out by 11 a.m.

"Every holiday there is a shortage of bread," she complained and suggested opening another bakers shop in the Laindon High Road.

Laindon seems to have been particularly hard hit. There were reports of people still waiting around for supplies at 5 p.m. and Gollis' Bakers began baking fresh batches during the afternoon to cope with the demand.

Mrs. E. Rickards, Manageress of Bartons in Laindon, put the blame for the bread famine squarely at the doors of the consumers.

She said: "They went mad, some of them are just gluttons. They hoard bread, they don't need half of what they buy. We had more bread than last Christmas, but it had all gone by 11.45 a.m."

The bakers' shops also reported that trade fell off on the first day after Christmas, a sure sign that many families still had stocks left over.

**Spillford**  
**CARPETS**  
**25% OFF**

WHILE STOCKS LAST  
SELECTED RANGES

**HURRY**

PLANNERS AVAILABLE  
9 A.M. TO 9 P.M.

**Get in touch  
NOW!!**

374 London Road, Westcliff  
(nr. Hamlet Ct.) Southend 42124

172 High Street, Rayleigh  
(near G.P.O.) Rayleigh 6456

315 London Road, Hadleigh  
(near Bata) Southend 55001

## Fryerns Play Leadership party



Fryerns Play Leadership held a party for the under-11's at Fryerns Play Area on Friday week.

## Basildon Civic Arts Centre

## County Council will give £2,500 towards £101,000 building

**ESSEX COUNTY** Council are to contribute £2,500 towards the cost of Basildon's £101,000 Civic Arts Centre, which is now being constructed in the Town Centre.

The contribution is exactly half the amount given to the Harlow Arts Centre project.

Already £80,500 has been raised for the Basildon scheme. It is made up by: Rates, £60,000; Corporation, £15,000; Ford Trust, £5,000; and Carreras, £500.

### VICE-CHAIRMAN

Coun. A. J. Middleton has been appointed Vice-Chairman of Basildon Council's Youth Sub-Committee.

## Busy Queen

One of the hardest-working Carnival Queens that Basildon has ever had, Geraldine Gahan, spent Christmas Eve visiting old people and children at St. Andrew's Hospital, Billericay, and the Mayflower Annex. She was accompanied by Mr. George King-Craven, St. Andrew's Hospital, and her two Princesses, Miss Kerryanne Butterfill and Miss Christine Wess. The party spent about three hours playing with the children and talking to the old folk.

## Medal for Post Office engineer

**MR. FREDERICK** Fisher, 30 years a telephone engineer, was last week awarded the Imperial Service Medal for long and meritorious service.

The award was presented to Mr. Fisher by Southend Area Telephone Manager Mr. R. M. Watson.

Mr. Fisher received the medal on his "informal retirement." He retired officially at that ceremony, but has been invited to stay on.

Living at Witchards, Basildon, he works at the Basildon No. 2 Telephone Exchange in Winstanley Road. There he is responsible for the maintenance of the manual switch-board equipment.

Married with three children, Mr. Fisher was in the Navy for nine years before the war.

He has spent 10 years working in Basildon and 20 years working at exchanges in London.



Mr. Frederick Fisher, who received the Imperial Service Medal with his colleagues from No. 2 Basildon Telephone Exchange.



After their wedding on Saturday at St. Gabriel's Church, Pitsea, Mr. Bernard Patrick Coyle, of Crest Avenue, Pitsea, and his bride, the former Miss Heidemarie Gisela Riedel, of Bala Street, Anfield, Liverpool, left for a honeymoon in Berlin. The bride, who was given away by Mr. Michael Mockler, wore a white velvet dress trimmed with fur, long white boots and a muff. The bridesmaids were Misses V. Fairweather and K. Mockler. Mr. Alan Coe was best man.

(Photo by Highlands Studios)

## CLAPHAM BROS

for FURNISHING  
and CARPETING



Relax in the  
lap of luxury  
— Minty

Showrooms—

140-142 HIGH STREET  
PHONE **BILLERICAY** 51820

27-29 THE BROADWAY  
PHONE **WICKFORD** 4360

2-6 KINGS ROAD  
PHONE **BRENTWOOD** 1820  
Open Fridays until 8 p.m.

9 HIGH STREET  
PHONE **BRENTWOOD** 1820  
Open Fridays until 8 p.m.

Stockists of  
G-Plan  
Guy Rogers  
Ercol  
Greaves and  
Thomas  
Stag  
Uniflex  
McIntosh  
Meredew  
Scandart  
Avalon  
Parker-Knoll  
Cintique  
Limelight  
Toothill  
Myer's  
Lebus  
White and  
Newton  
Slumberland  
Staples  
Fyne-Ladye  
Vono  
Austinsulte  
Jentique  
Priory  
Nathan  
Dunlopillo  
Stonehill  
Wrighton  
Vi-Spring  
Stevens  
Remploy  
Cornwell  
Norton  
Lawrence  
Lushell  
Strongbow  
Europa  
etc., etc.

WE HAVE MADE OUR NEW YEAR RESOLUTION  
"TO GIVE BETTER-THAN-EVER SERVICE  
AT KEENER-THAN-EVER PRICES"

**WICKFORD STUDIOS**  
9 THE BROADWAY, WICKFORD

Telephone: WICKFORD 3836

WICKFORD'S MOST POPULAR PHOTOGRAPHERS